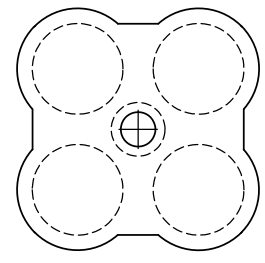
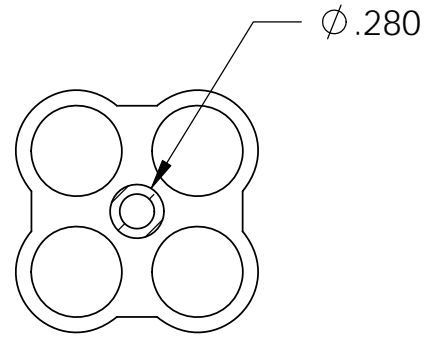
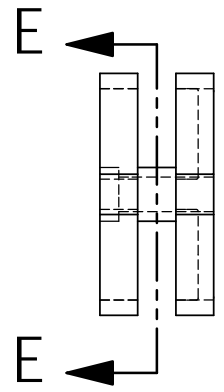
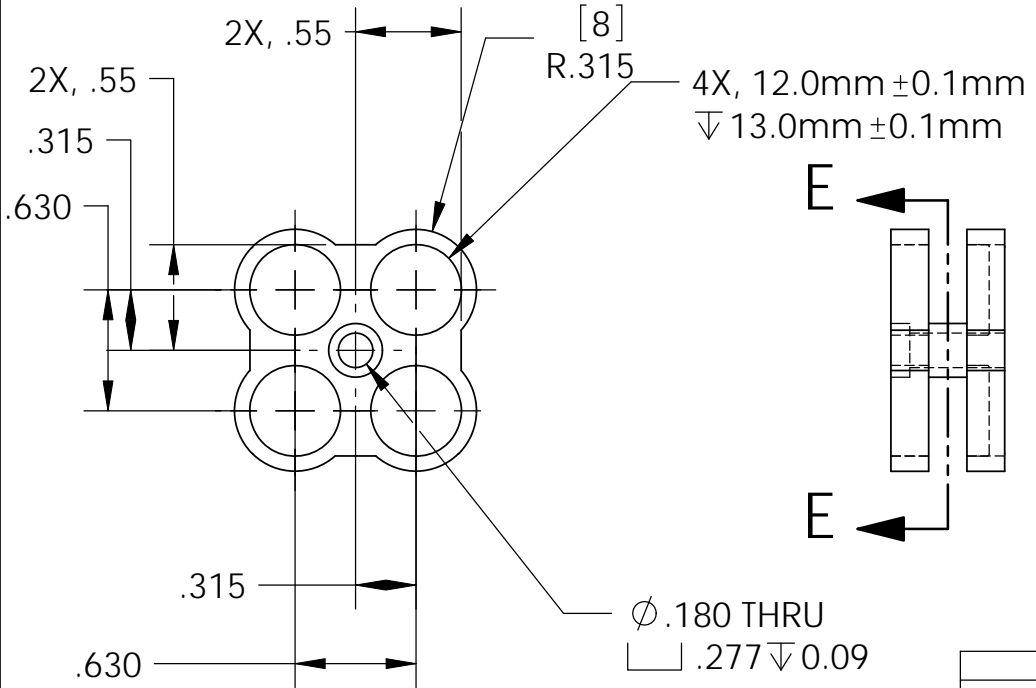
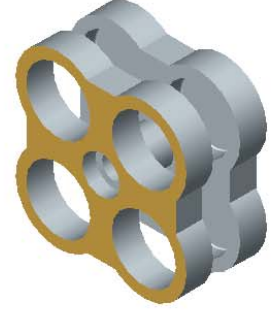
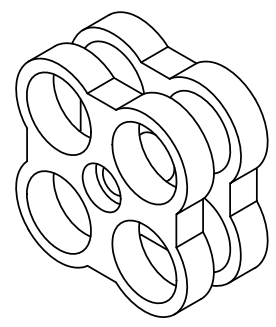
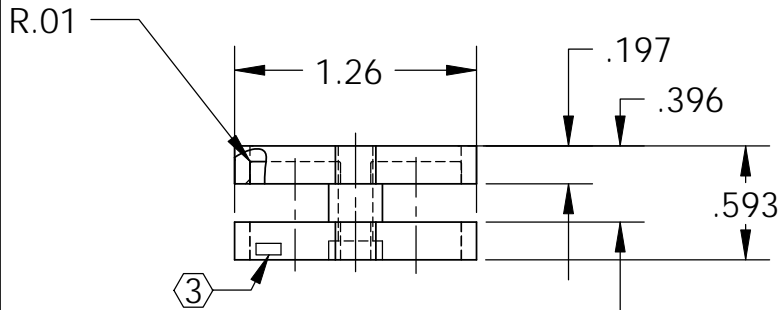

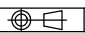


REV.	DATE	DCN #	DRAWING TREE #
		E0810007-V1	



SECTION E-E
SCALE 1 : 1

NOTES: (UNLESS OTHERWISE SPECIFIED)		 CALIFORNIA INSTITUTE OF TECHNOLOGY MASSACHUSETTS INSTITUTE OF TECHNOLOGY	
1. REMOVE ALL SHARP EDGES, R.02 MIN. 2. ALL MACHINING FLUIDS SHALL BE WATER SOLUBLE AND FREE OF SULFUR, CHLORINE AND SILICONE, SUCH AS CINCINNATI MILACRON'S CIMTECH 410 (STAINLESS STEEL)		DIMENSIONS ARE IN INCHES TOLERANCES: .XX ± -- .XXX ± -- ANGULAR ± -- °	
③ SCRIBE, ENGRAVE OR STAMP DRAWING PART NUMBER ON NOTED SURFACE OF PART AND THEN A THREE DIGIT SERIAL NUMBER. SERIAL NUMBERS START AT 001 FOR THE FIRST PART AND PROCEED CONSECUTIVELY. USE .07" HIGH CHARACTERS. EXAMPLE: D020188- 001. A VIBRATORY TOOL MAY BE USED.		MATERIAL COPPER (>99%) FINISH	
		SYSTEM ADVANCED LIGO SUB-SYSTEM SUS NEXT ASSY SINGLE PENDULUM TEST	
		PART NAME 2x2 COPPER ARRAY DAMPER	
		DRAWN: CIT 02 JUN 2003 CHECKED: APPROVED:	
		SIZE A DWG. NO. D020475 REV. V1	
		SCALE: NTS PROJECTION:  SHEET 1 OF 1	