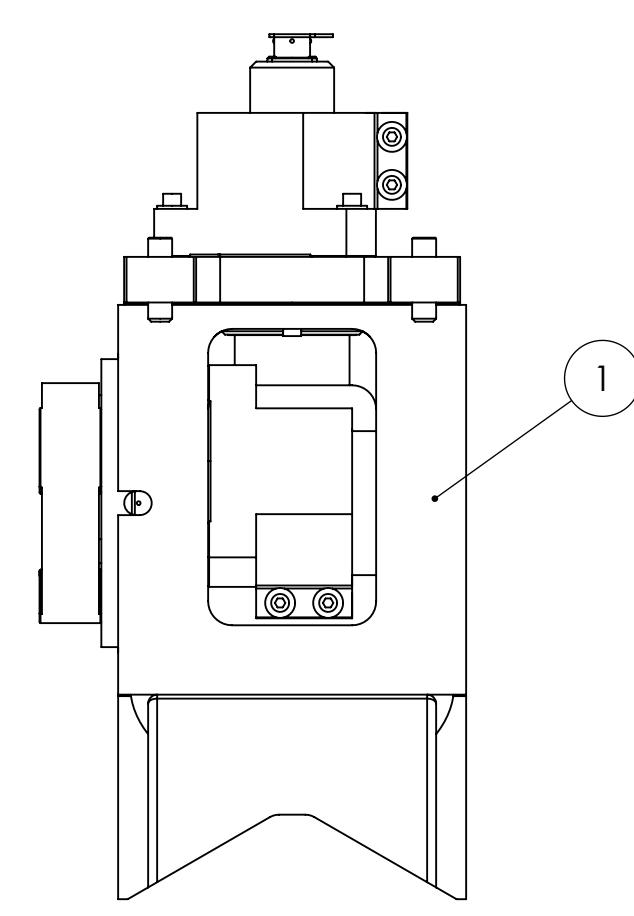
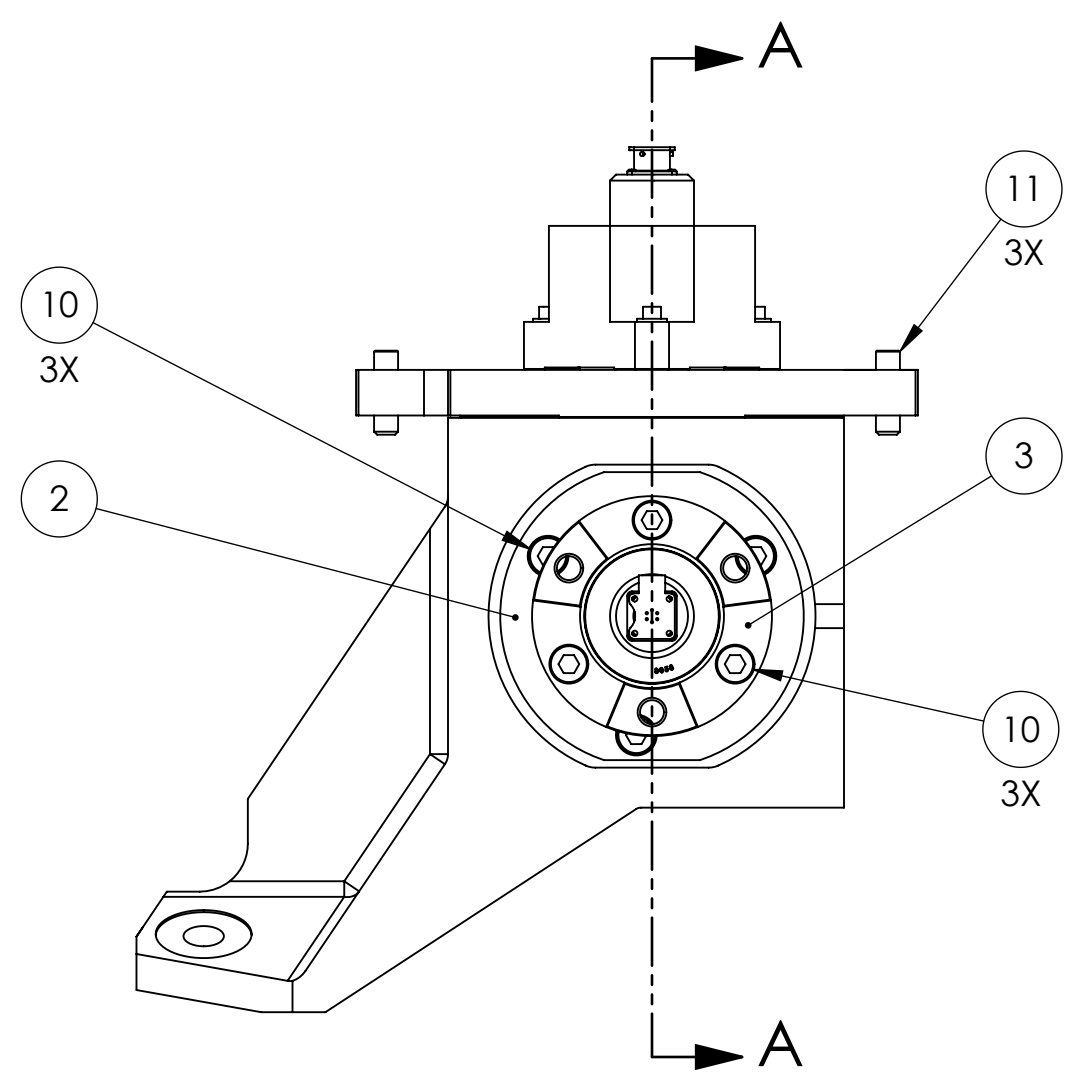
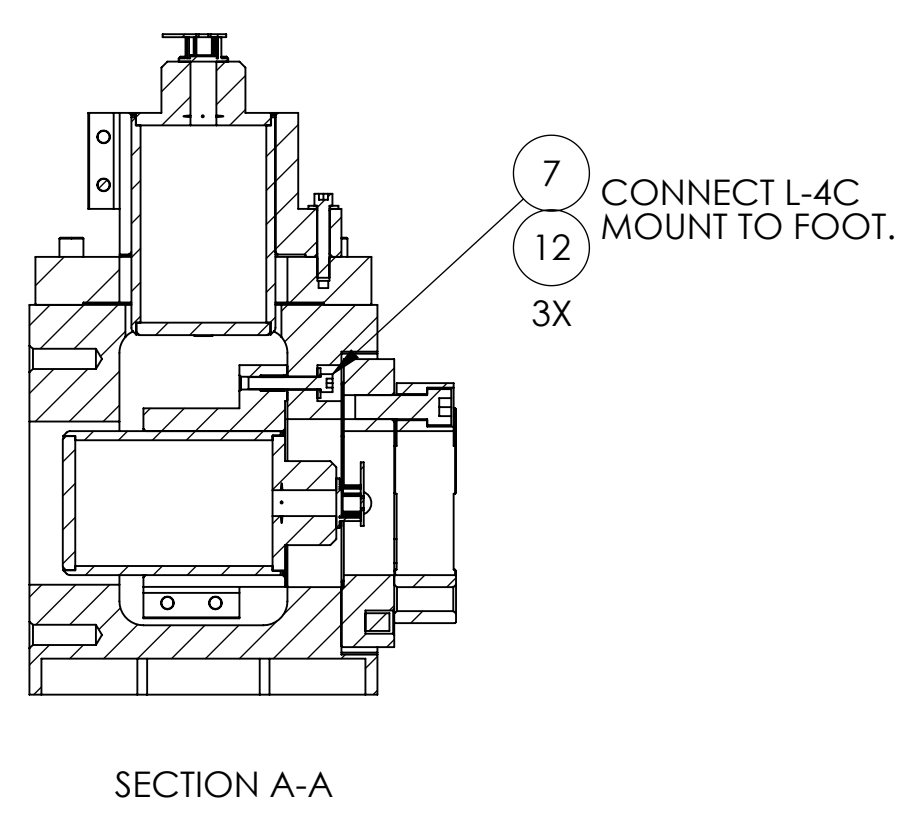
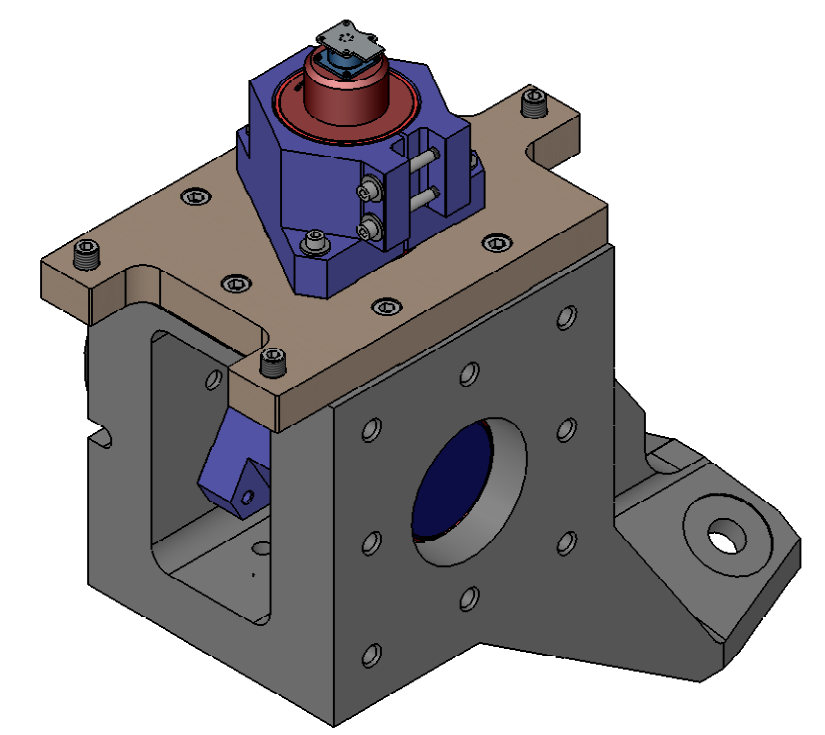
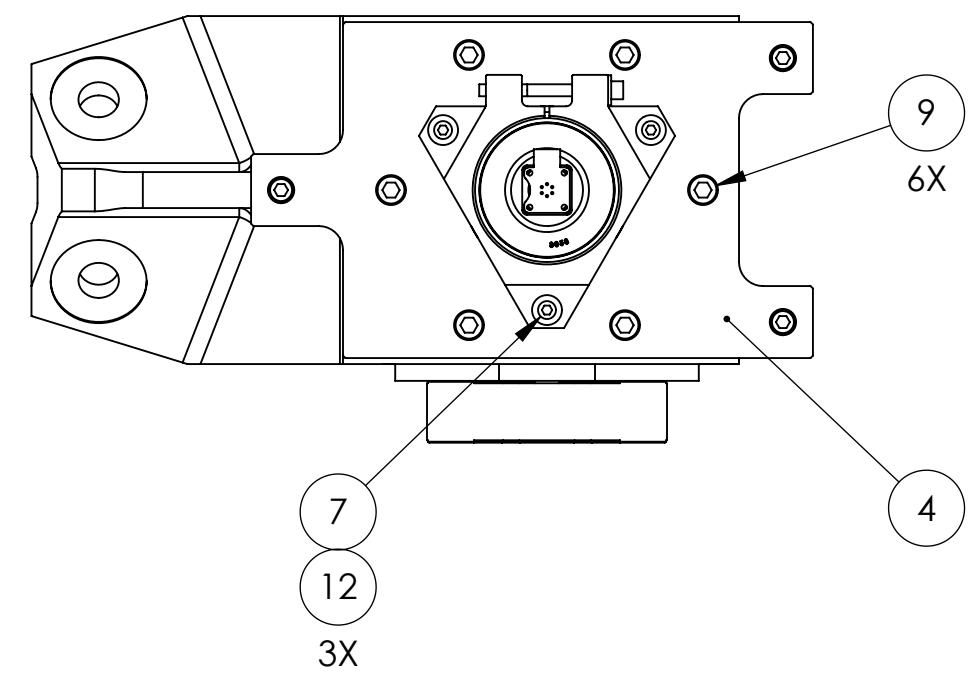
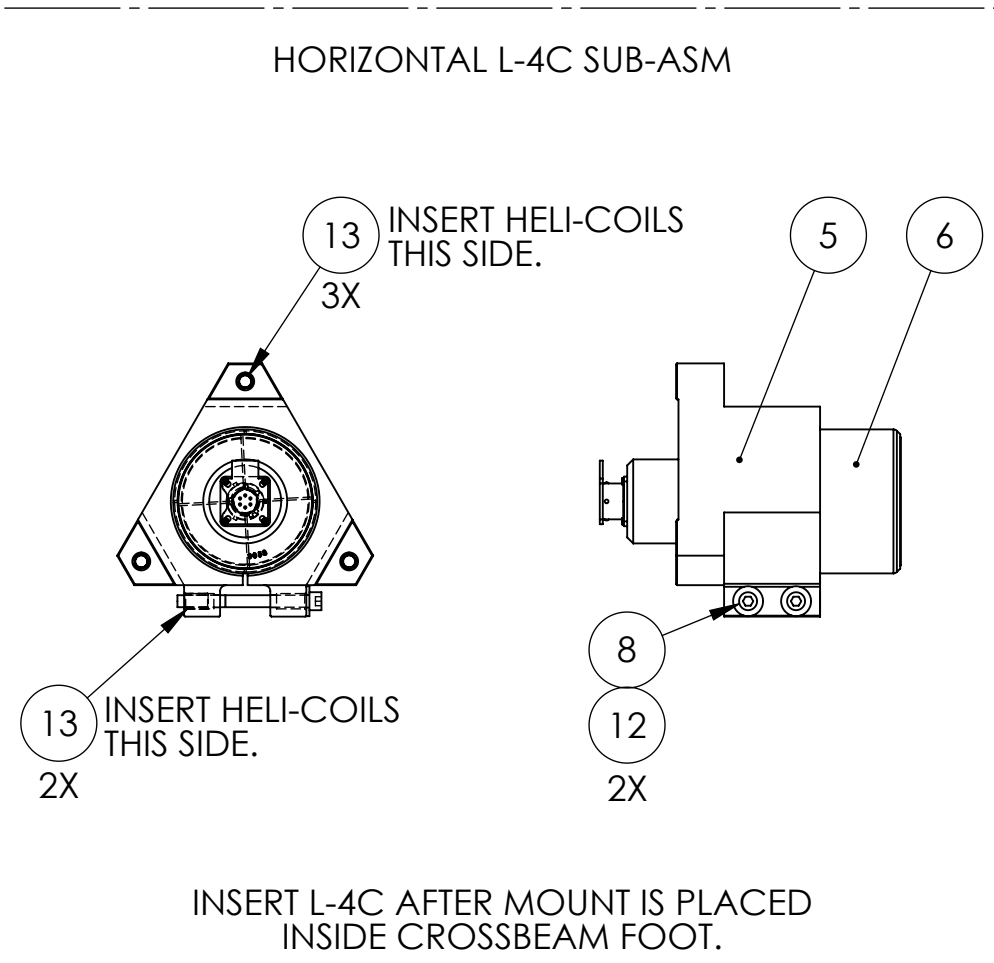
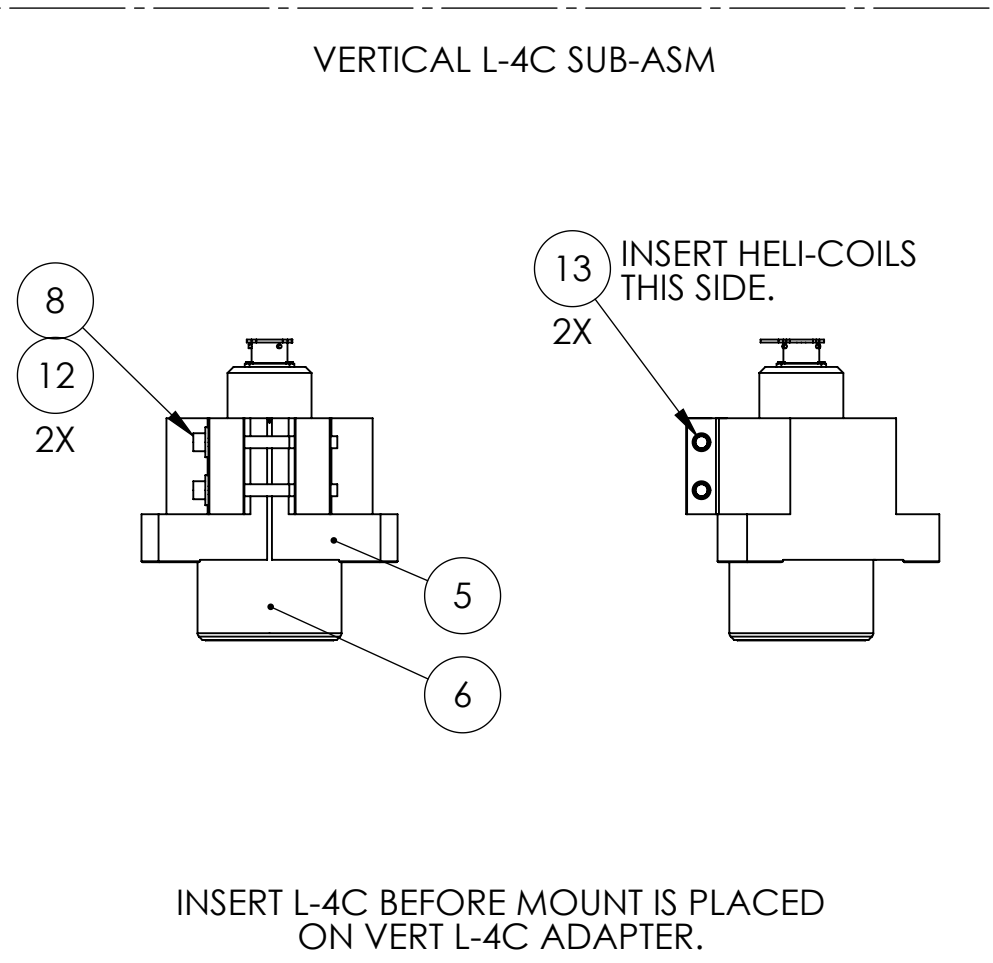


REV	DATE	APPROVAL	DESCRIPTION
A	06/08/2004	DCN # E030595-00-E	PRODUCTION RELEASE.



CONFIGURATION: **HAM HEPI, RIGHT**
TYPE 03

BILL OF MATERIALS					
ITEM NO.	HAM HEPI, RIGHT /QTY.	PART NUMBER	DESCRIPTION	CONFIG DESCRIPTION	MATERIAL
1	1	D020195	HEPI CROSSBEAM FOOT	AdLIGO, RIGHT	LOW CARBON STEEL
2	1	D080547	HAM HEPI HORZ ACTUATOR ADAPTER 1	-	1018 CRS
3	1	D080548	HAM HEPI HORZ ACTUATOR ADAPTER 2	-	1018 CRS
4	1	D080546	HAM HEPI VERT L-4C ADAPTER	-	1018 CRS
5	2	D030586	HEPI L-4C MOUNT	-	ALUMINUM 6061-T6
6	2	L-4C	SEISMOMETER ASSEMBLY	VERTICAL	SEE BOM
7	6	HOLOKROME 78066	SHCS	1/4"-20x1.5"	18-8 SS
8	4	MCMASTER 92196A553	SHCS	1/4"-20 X 2.75"	18-8 SS
9	6	HOLOKROME 78100	SHCS	3/8"-16x1.25"	18-8 SS
10	6	MCMASTER 92196A387	SHCS	1/2"-20 x 1.5"	18-8 SS
11	3	MCMASTER 92311A747	SOCKET SET SCREW	1/2"-20 X 1.75"	18-8 SS
12	10	MCMASTER 90126A029	FLAT WASHER	.281"ID X .625"OD	STEEL
13	7	HELICOIL 1185-4EN500	HELICAL INSERT	1/4"-20 X .50"	NITRONIC 60 SS



NOTES: (UNLESS OTHERWISE SPECIFIED)
 1. DO NOT SCALE FROM DRAWING.
 2. REMOVE ALL SHARP EDGES. LEAVE .005 X 45° MIN CHAMFER, OR .005 MIN RADIUS.
 3. ALL MACHINING FLUIDS MUST BE WATER SOLUBLE AND FREE OF SULFUR, CHLORINE AND SILICONE. E.G., MILACRON CIMTECH 410.
 4. CLEAN THOROUGHLY TO REMOVE ALL OIL, DIRT, AND CHIPS.

DIMENSIONS ARE IN INCHES
 TOLERANCES:
 .XX ± 0.015
 .XXX ± 0.005
 ANGULAR ± 0.5°

MATERIAL: SEE BOM
 FINISH: SEE BOM

DRAWN: A. STEIN
 CHECKED: []
 APPROVED: []

DATE: 11/03/2008

SCALE: 1:4
 PROJECTION: []

CALIFORNIA INSTITUTE OF TECHNOLOGY
 MASSACHUSETTS INSTITUTE OF TECHNOLOGY
 IGR, GLASGOW UNIVERSITY GEO 600 GROUP

SYSTEM: ADVANCED LIGO
 SUB-SYSTEM: SEI
 NEXT ASSY: D030690
 PART NAME: HEPI CROSSBEAM ATTACHMENT ASM
 SIZE DWG. NO.: D030326
 REV. B

SHEET 2 OF 2