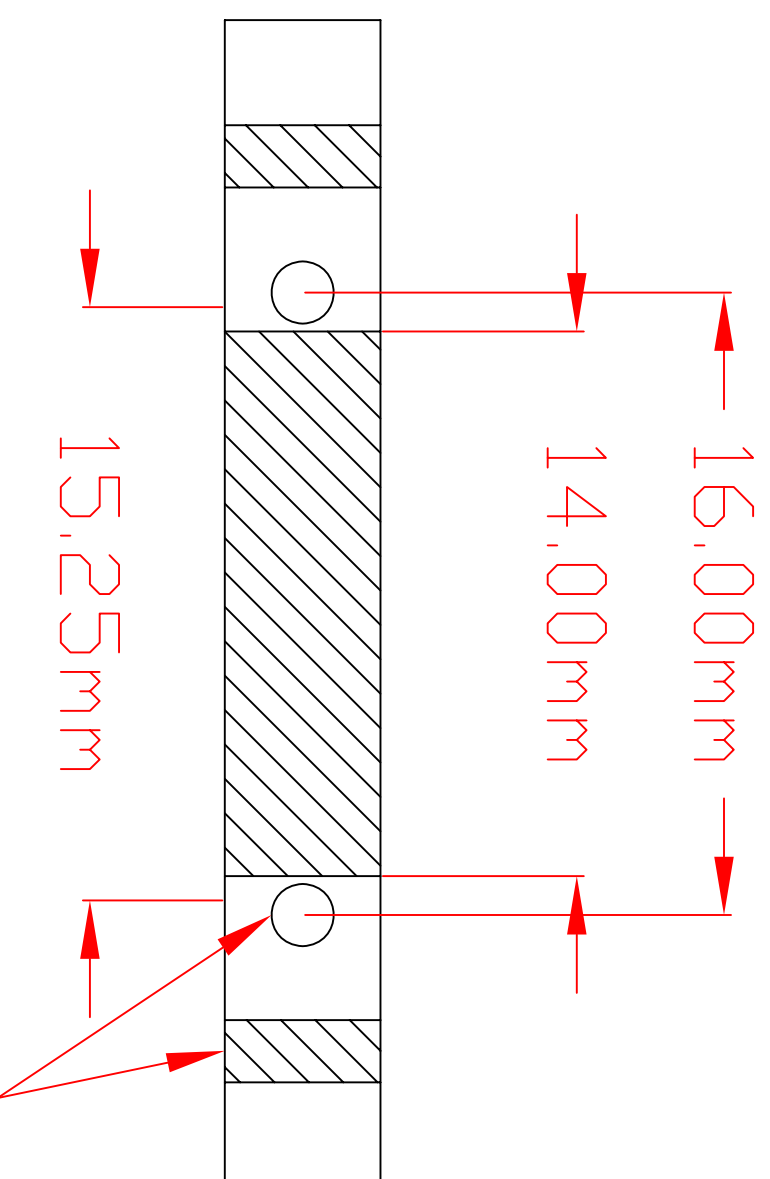
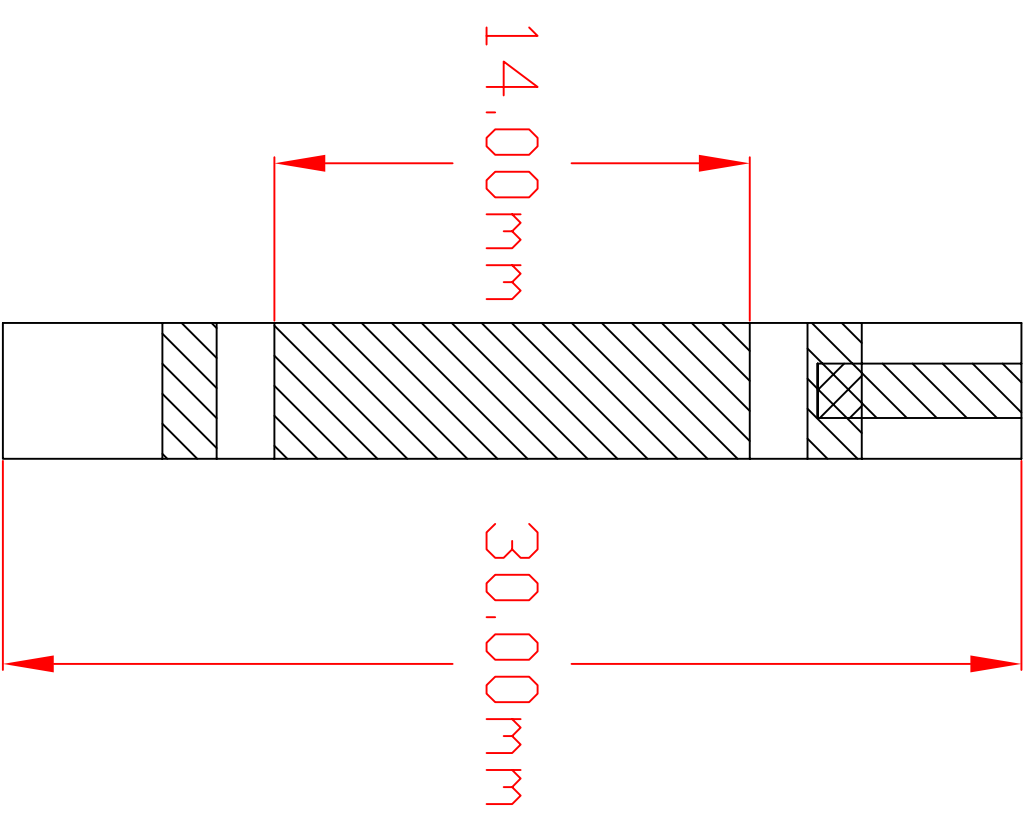


QPD Mounting Plate - Aluminum
Face View
tolerance - 0.05mm



Drilled and tapped
for M2 screws

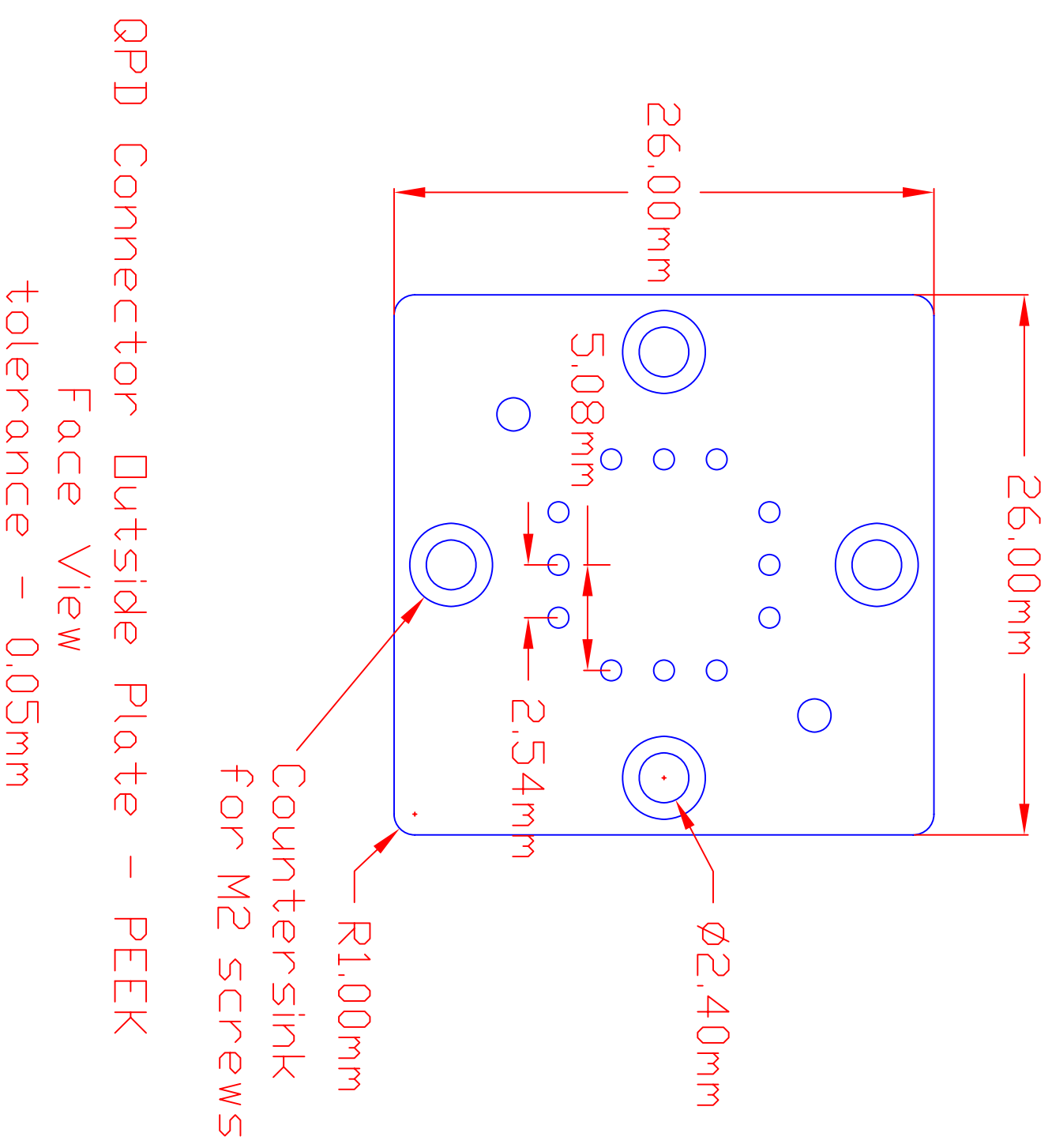
QPD Mounting Plate - Aluminum
Top View
tolerance - 0.05mm

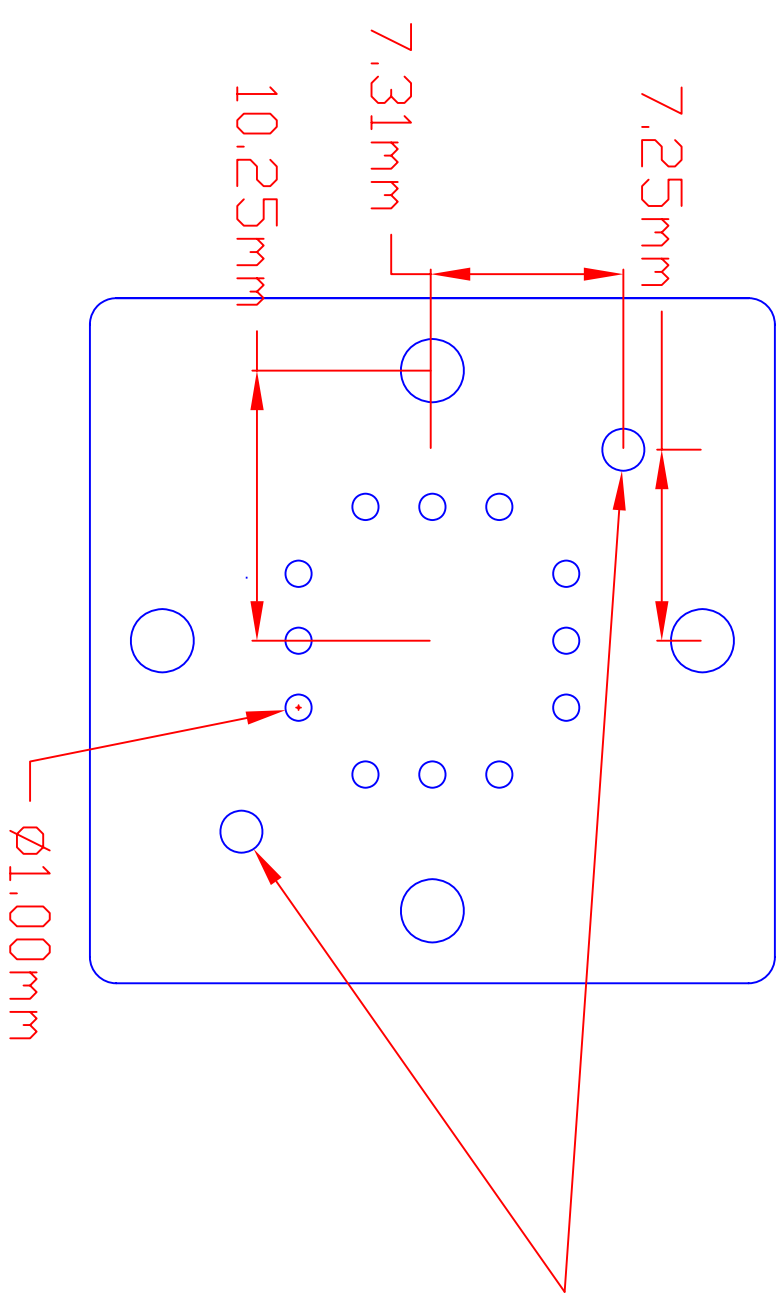


QPD Mounting Plate - Aluminum

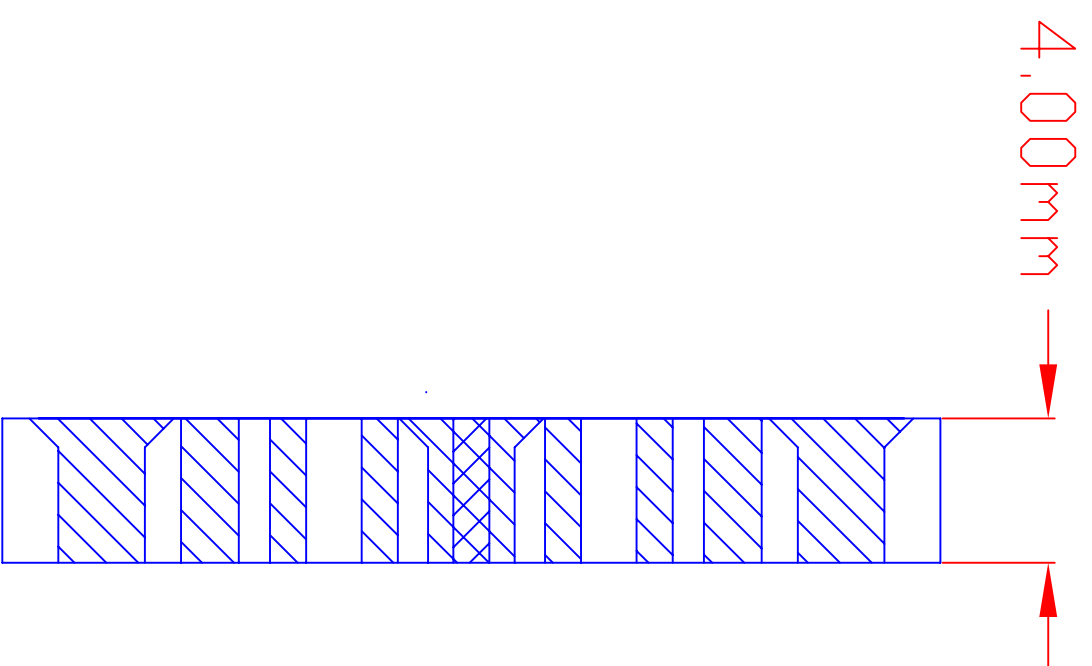
Side View

tolerance - 0.05mm



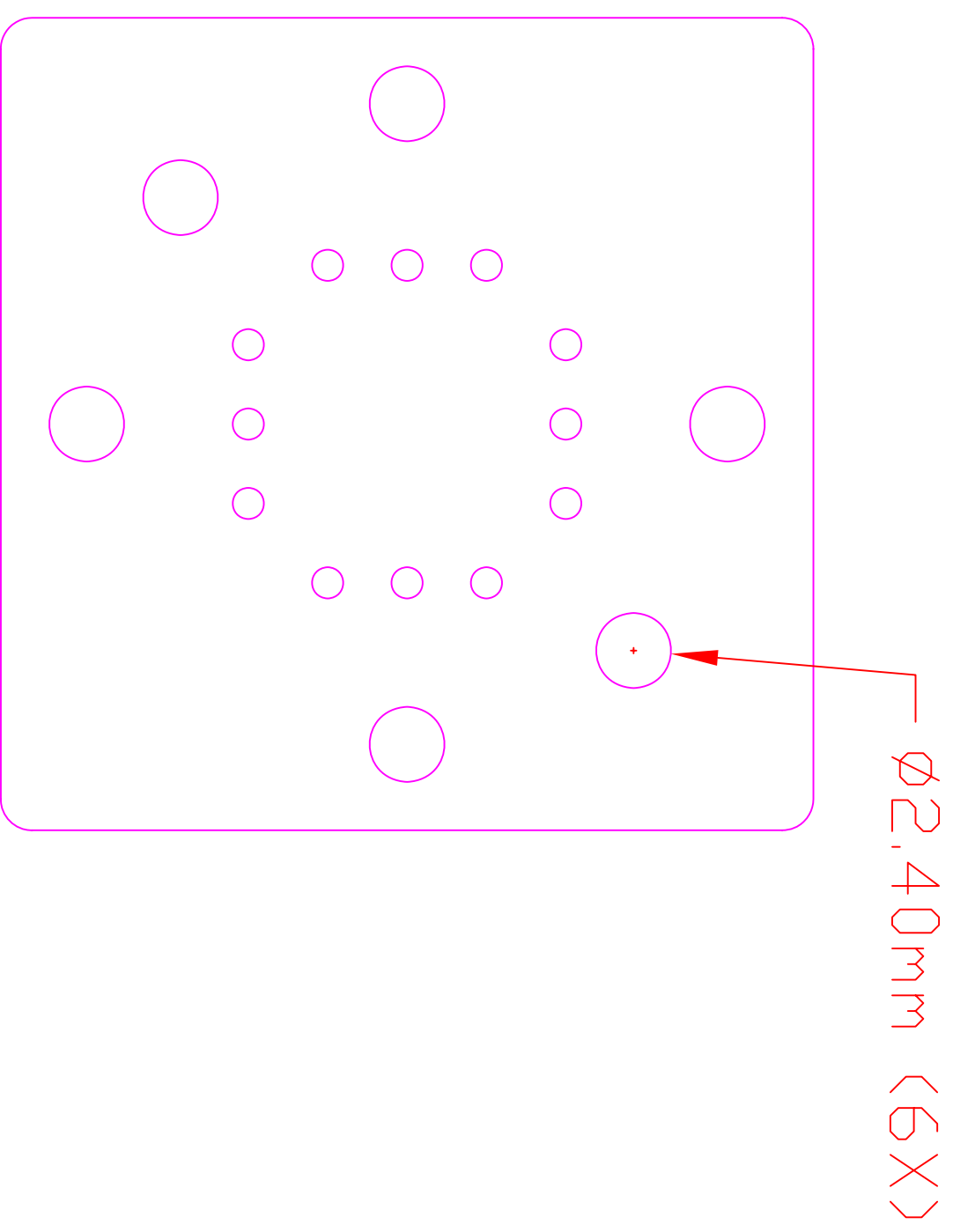


QPD Connector Outside Plate - PEEK
Back View
tolerance - 0.05mm

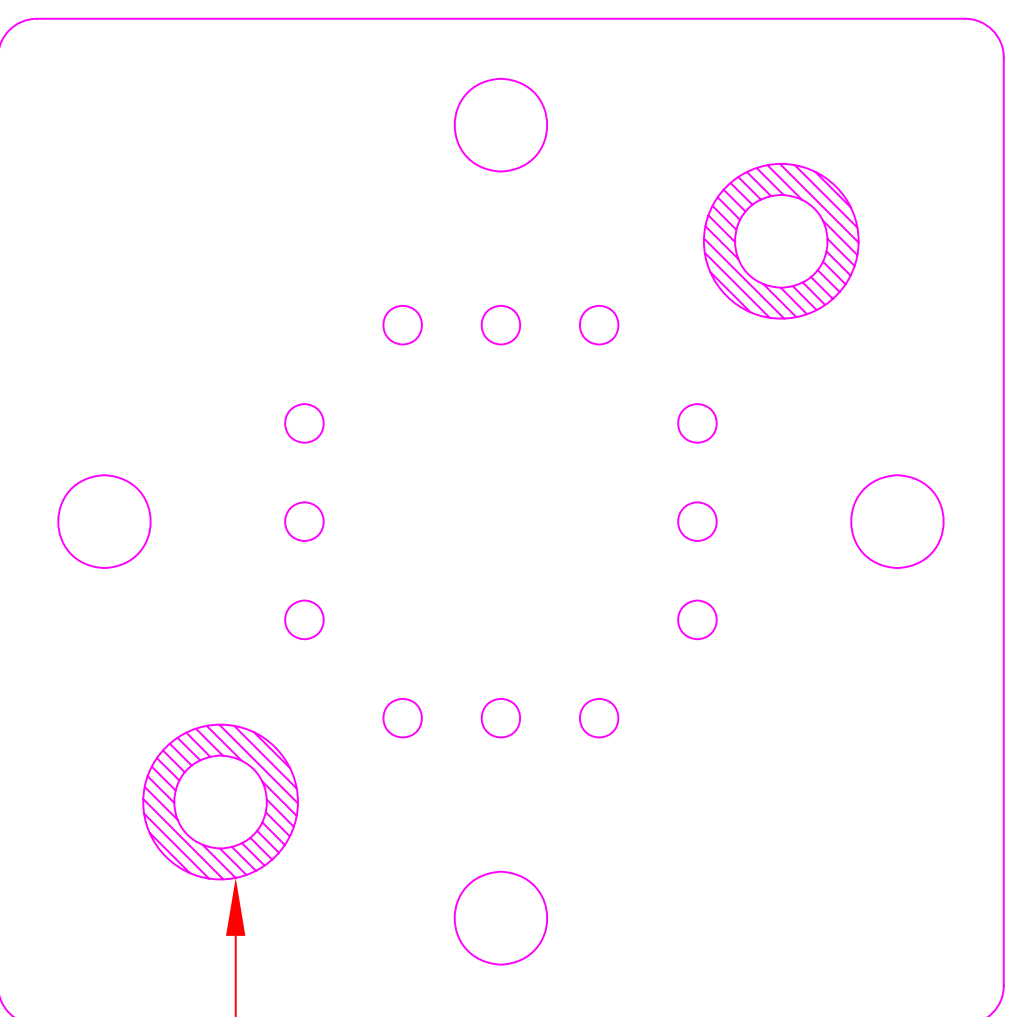


QPD Connector Outside Plate - Peek
Side View

tolerance - 0.05mm



QPD Connector Inside Plate - PEEK
Face View
tolerance - 0.05mm

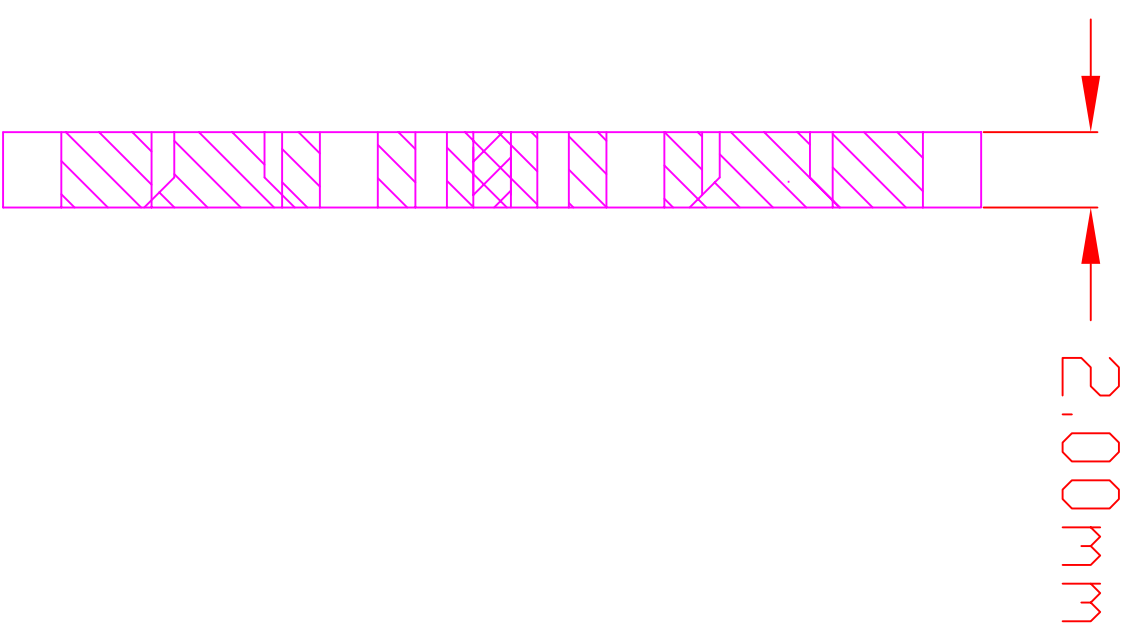


Countersink
for M2 screws

QPD Connector Inside Plate - PEEK

Back View

tolerance - 0.05mm



QPD Connector Inside Plate - PEEK

Side View

tolerance - 0.05mm