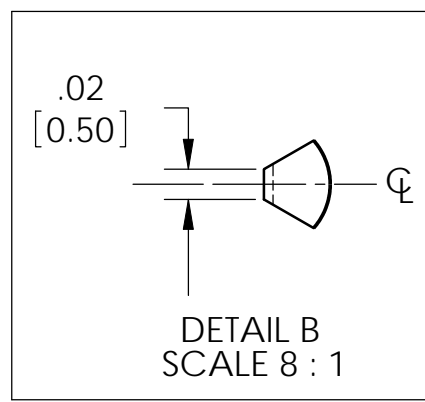
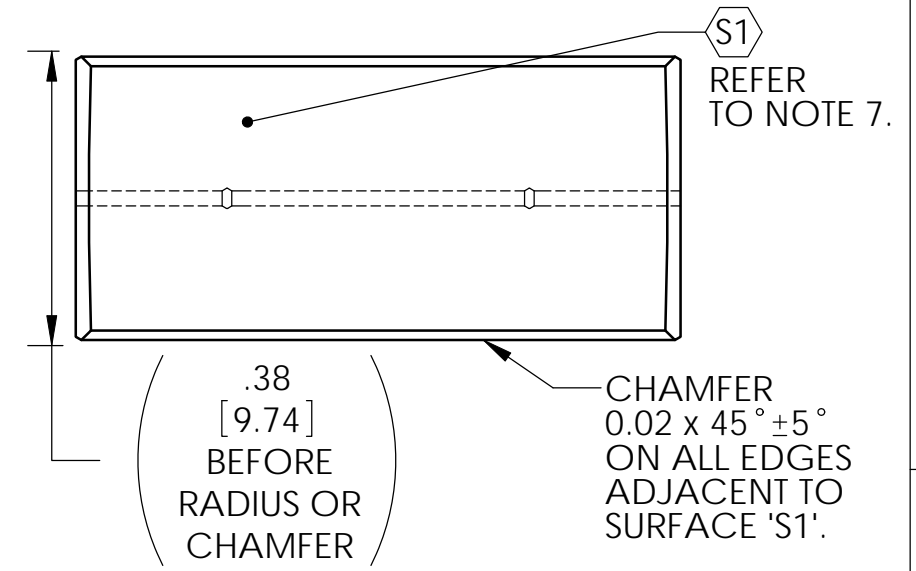
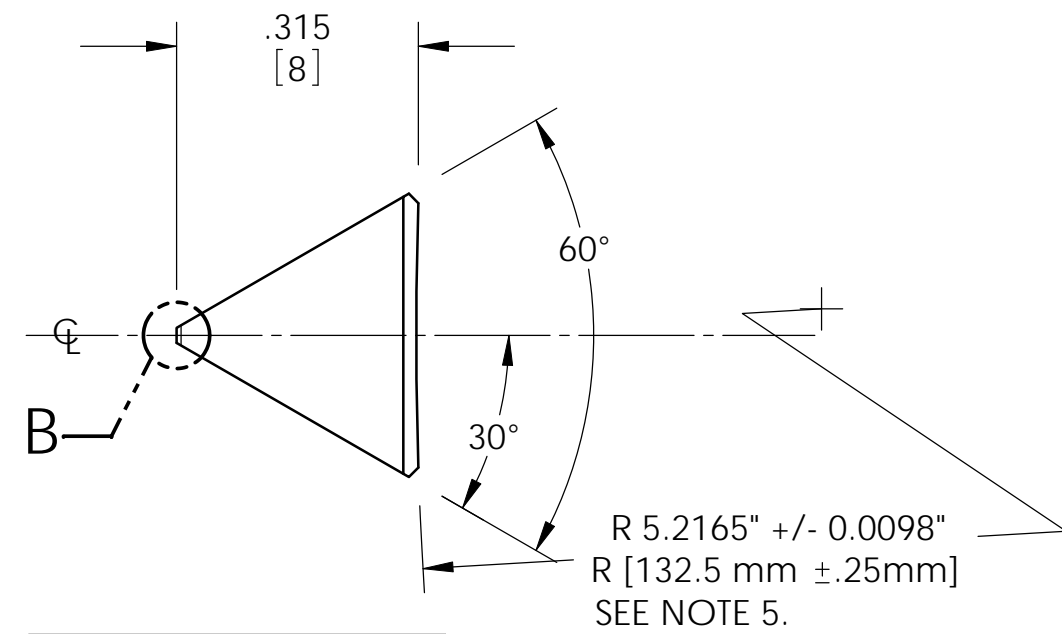
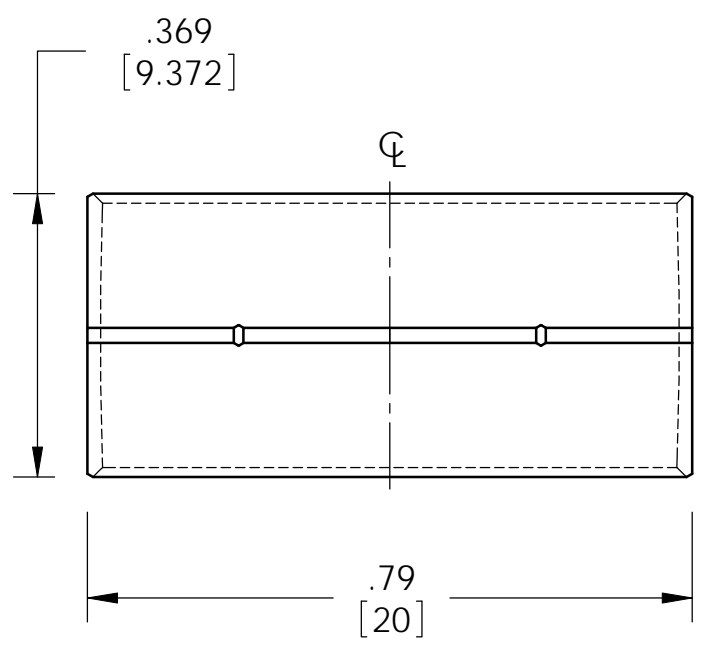
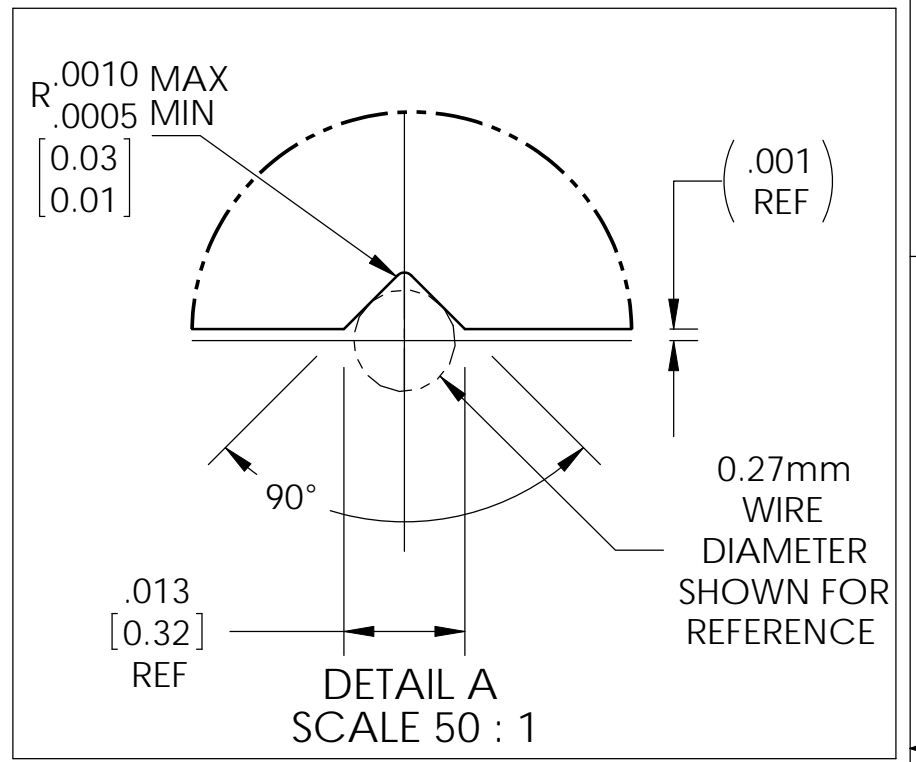
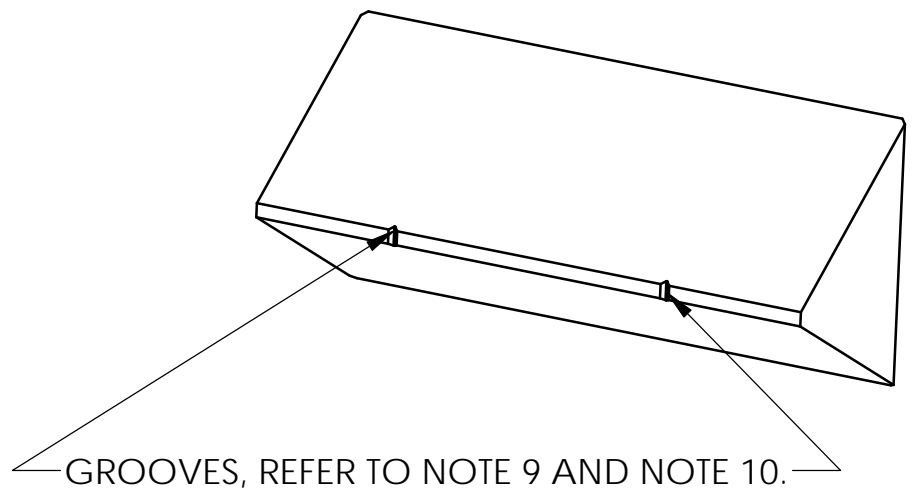
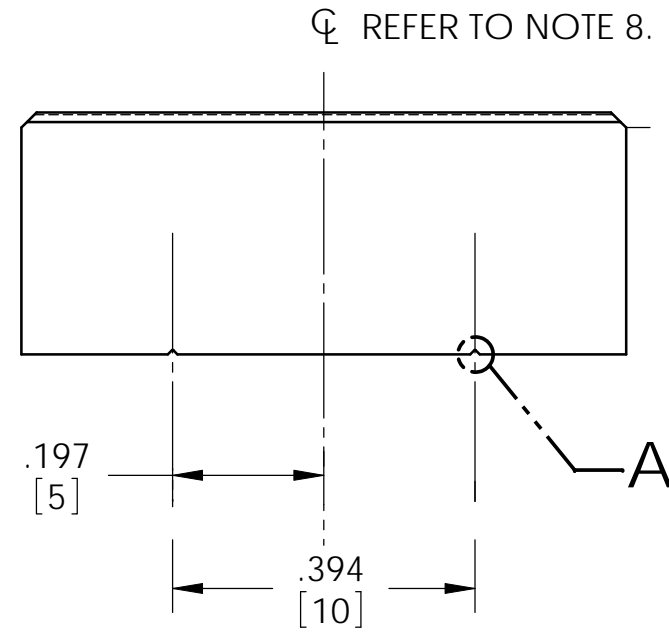


REV.	DATE	DCN #	DRAWING TREE #
v1	2nd Feb 09	RFI USE ONLY (NO DCN)	
v2	20th Feb 09	E0900024-v1	
v3	31st Mar 09	E0900099-v1	
v4	23 June 10	E1000231-v1	



NOTES: (UNLESS OTHERWISE SPECIFIED)		CALIFORNIA INSTITUTE OF TECHNOLOGY MASSACHUSETTS INSTITUTE OF TECHNOLOGY	
1. DO NOT SCALE FROM DRAWING.	DUAL DIMENSIONS ARE IN INCHES AND (MILLIMETERS)	LIGO SYSTEM ADVANCED LIGO SUB-SYSTEM SUS HLTS NEXT ASSY HLTS BOTTOM MASS ASSY PART NAME HLTS PRISM	
2. MINIMISE EDGE CHIPPING.	TOLERANCES: .XX ± 0.01 .XXX ± 0.005 ANGULAR ± 1°		
3. REMOVE ALL SHARP EDGES.	MATERIAL SAPPHIRE	SIZE DWG. NO. D070441 REV. v4 SCALE: 4:1 PROJECTION: SHEET 1 OF 1	
4. ALL MACHINING FLUIDS SHALL BE WATER SOLUBLE AND FREE OF SULFUR, CHLORINE AND SILICONE.	FINISH INSPECTION POLISH		
5. CYLINDRICAL RADIUS TO BE ADDED TO SURFACE 'S1'.	DRAWN C TORRE 11th Dec 2008		
6. PRISM NOT TO BE USED FOR OPTICAL PURPOSES.	CHECKED		
7. INSPECTION POLISH ALL FACES INCLUDING SURFACE 'S1'.	APPROVED		
8. STRADDLE ϕ W/IN .004" [0.1mm] T.I.R. (TOTAL INDICATED RUNOUT) FEATURE "A".			
9. IDENTICAL GROOVES TO LOCATE AND SEPARATE TWO (SPRING STEEL) WIRES.			
10. PLEASE USE LASER ABLATION TO CREATE GROOVES. A HIGH SURFACE QUALITY IS REQUIRED ON THE INTERNAL SURFACES OF THE GROOVES AND IN THE GENERAL VICINITY OF THE GROOVES. PLEASE DISCUSS BEST EFFORTS WITH LIGO STAFF.			

INTERNAL REFERENCE: - V3-002 ENG CHANGE