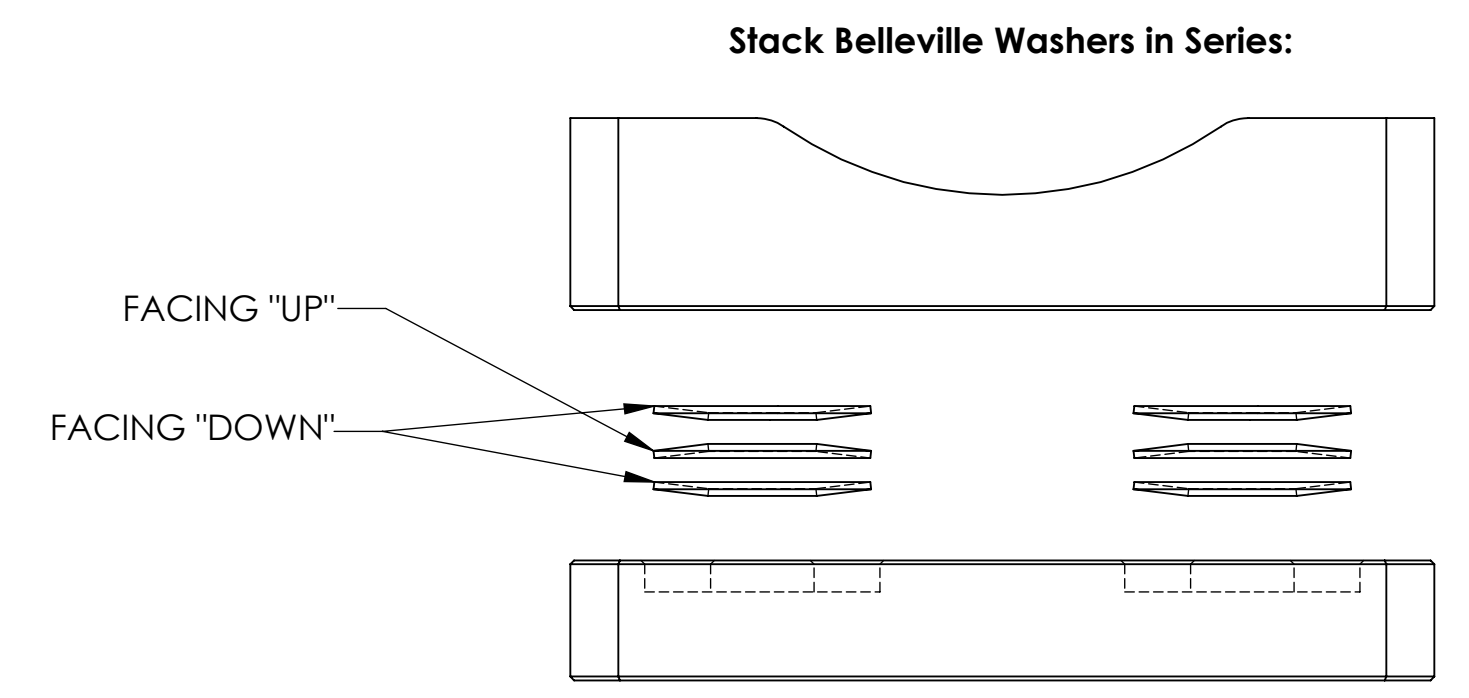
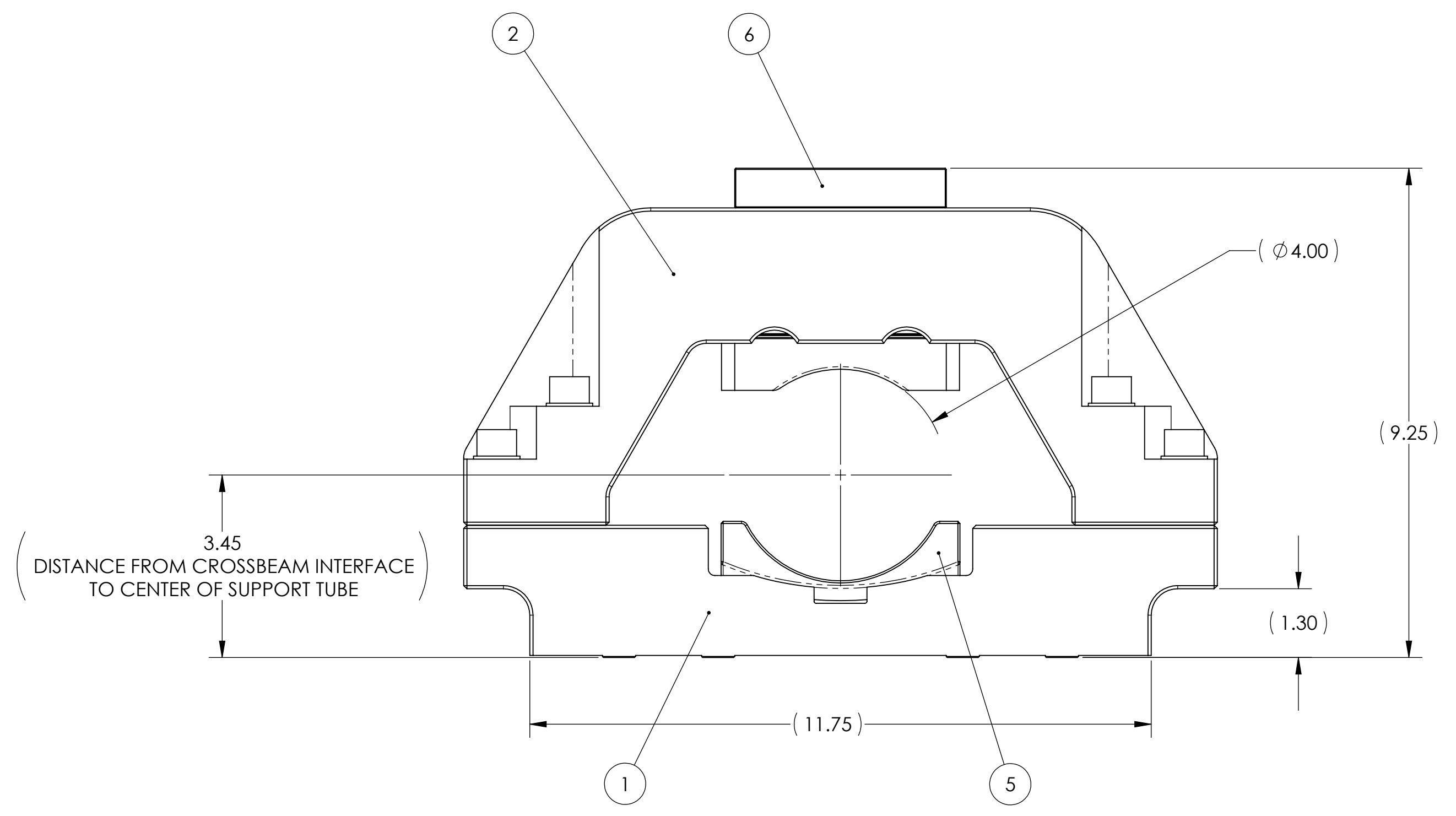
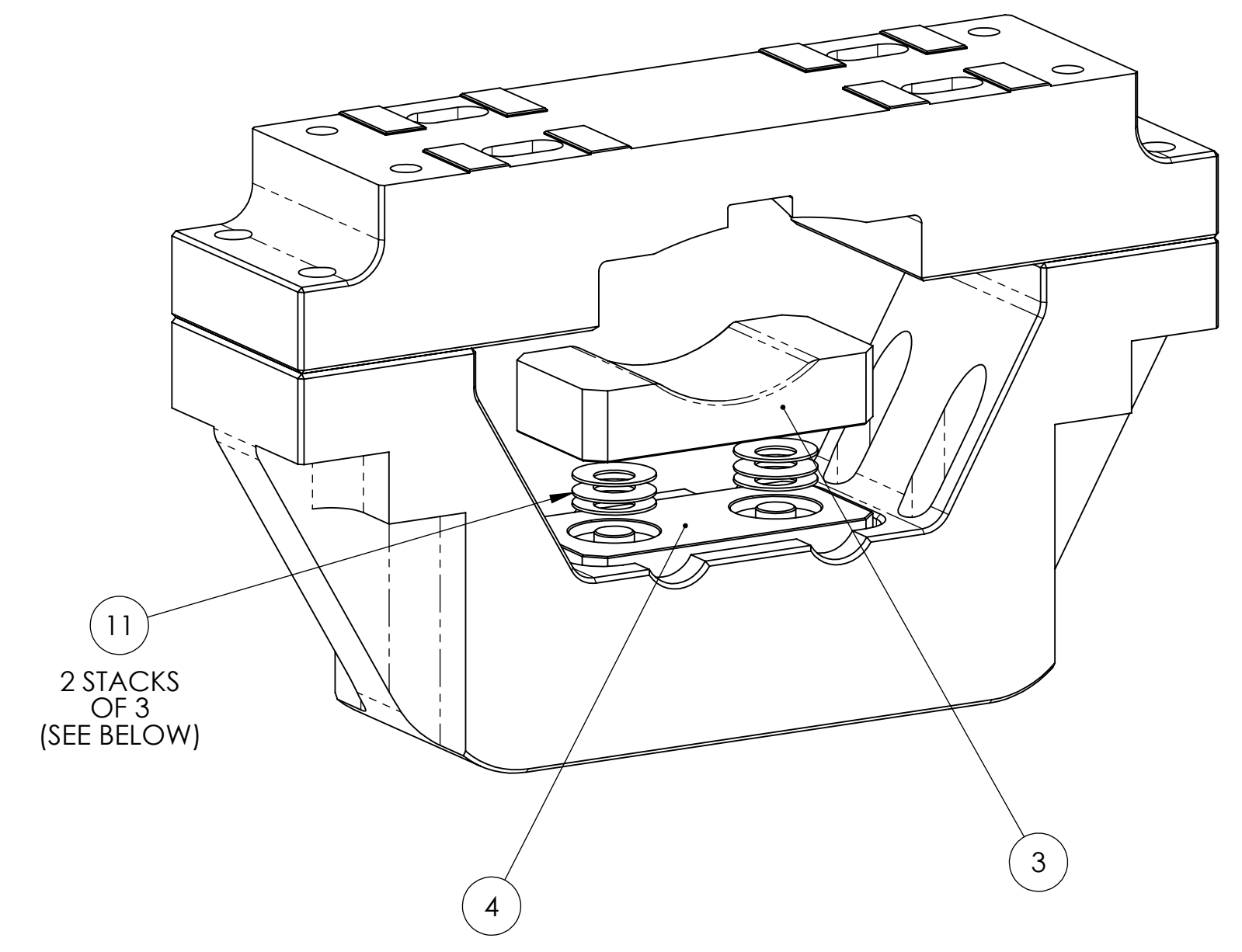
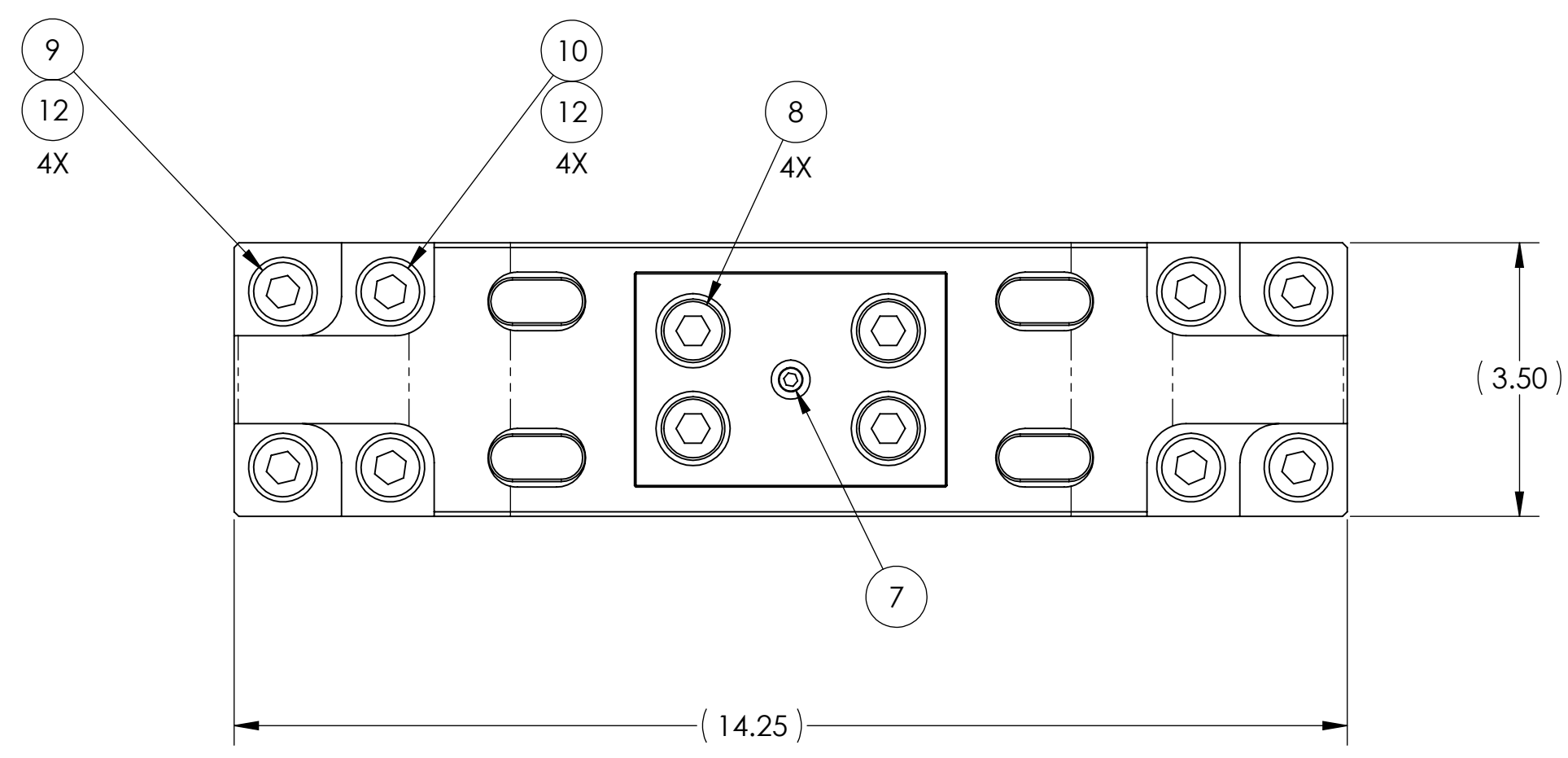
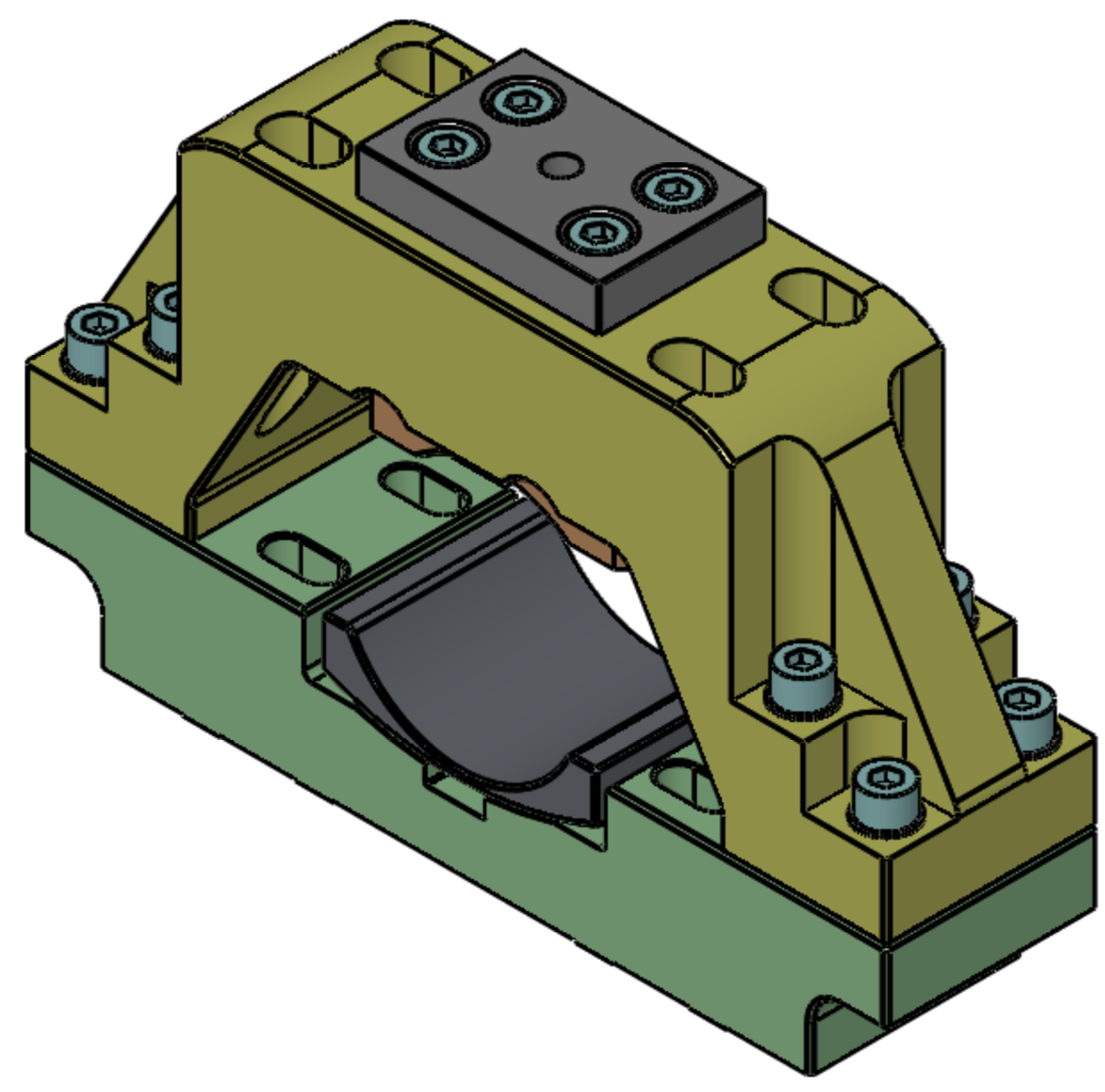


NOTES CONTINUED:

REV.	DATE	DCN #	DRAWING TREE #
v1 / 00	06 NOV 2008	N/A	N/A
v2	03 MAR 2010	E1000057	E1000056



ITEM NO.	PART NUMBER	DESCRIPTION	MATERIAL	REQ	SPARE	TOTAL
12	MCMMASTER_98017A210	Flat Washer, 1/2" Screw, .51"x.88"x.06"	ALSI 304	8		8
11	MCMMASTER_9713K78	Belleville Washer, .567"IDx1.125"ODx.038", .018" Defl.	302 SS	6		6
10	MCMMASTER_91274A484	SHCS, Corrosion-Resistant Coated, 1/2"-13x3.5"	Alloy Steel	4		4
9	MCMMASTER_91274A468	SHCS, Corrosion-Resistant Coated, 1/2"-13x2.5"	Alloy Steel	4		4
8	MCMMASTER_91274A460	SHCS, Corrosion-Resistant Coated, 1/2"-13x2.0"	Alloy Steel	4		4
7	HOLOKROME_79020	SHCS, #10-32x.50"	18-8 SS	1		1
6	D1000480	Clamp Screw Guard, HAM Support Tube	PTFE	1		1
5	D080378	Clamp Sleeve, HAM Support Tube	2024-T351 AL	1		1
4	D080377	Clamp Washer Plate, HAM Support Tube	17-4 PH SSSL, H 1150	1		1
3	D080376	Clamp Preload, HAM Support Tube	6061-T6 AL	1		1
2	D080375	Clamp Cap, HAM Support Tube	6061-T6 AL	1		1
1	D080374	Clamp Base, HAM Support Tube	303 SSSL	1		1

**NOTES AND TOLERANCES: (UNLESS OTHERWISE SPECIFIED)**

- INTERPRET DRAWING PER ASME Y14.5-1994.
- REMOVE ALL SHARP EDGES, R.02 MIN.
- DO NOT SCALE FROM DRAWING.
- ALL MACHINING FLUIDS MUST BE FULLY SYNTHETIC, FULLY WATER SOLUBLE AND FREE OF SULFUR, SILICONE, AND CHLORINE.

DIMENSIONS ARE IN INCHES  
 TOLERANCES:  
 .XX ± N/A  
 .XXX ± N/A  
 ANGULAR ± N/A"

**MATERIAL** SEE BOM      **FINISH** SEE BOM

**SYSTEM** ADVANCED LIGO      **SUB-SYSTEM** SEI      **PART NAME** Clamp Asm, HAM Support Tube

**NEXT ASSY** HAM SUPPORT STRUCTURE

<b>DESIGNER</b>	A. STEIN	06 NOV 2008	<b>SIZE</b>	<b>DWG. NO.</b>	<b>REV.</b>
<b>DRAFTER</b>	A. STEIN	06 NOV 2008	<b>D</b>	<b>D080373</b>	<b>v2</b>
<b>CHECKER</b>			<b>SCALE:</b> 1:2	<b>PROJECTION:</b>	<b>SHEET 1 OF 1</b>
<b>APPROVAL</b>	K. MASON	03 MAR 2010			

D080373\_Clamp\_Asm\_HAM\_Support\_Tube\_PART.PDM\_REV.X-006\_DRAWING\_PDM\_REV.X-001