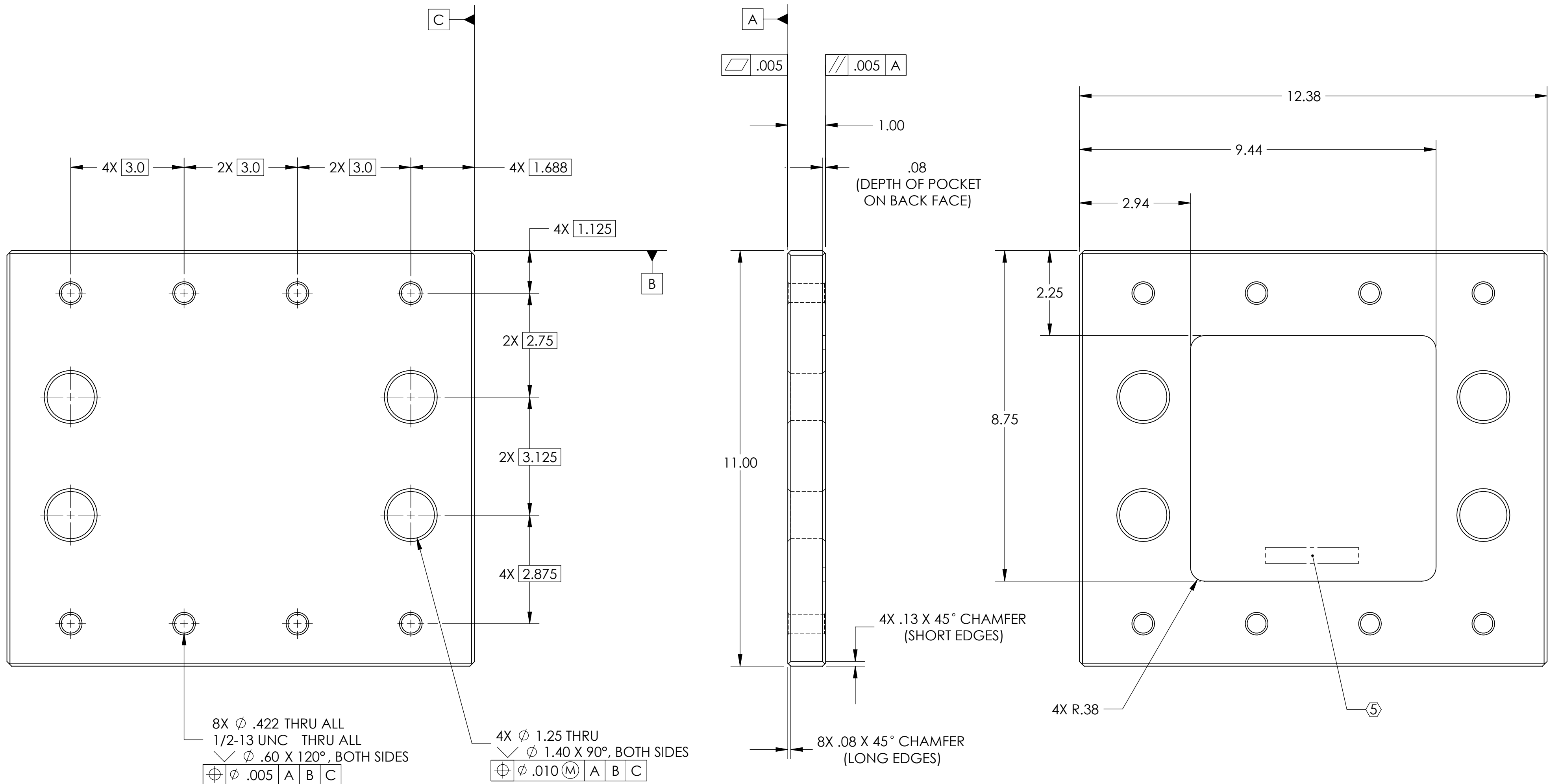


NOTES CONTINUED:

5. SCRIBE, ENGRAVE, OR MECHANICALLY STAMP (NO INKS OR DYES) DRAWING PART NUMBER AND REVISION ON NOTED SURFACE FOLLOWED ON THE NEXT LINE BY A THREE DIGIT SERIAL NUMBER. SERIAL NUMBERS START AT 001 FOR THE FIRST ARTICLE AND PROCEED CONSECUTIVELY. USE .07" HIGH CHARACTERS. A VIBRATORY TOOL MAY BE USED.  
EXAMPLE: D080460-v2, S/N 001.

6. REFER TO DWG. # D080462 FOR TOLERANCES FOR WELDED STRUCTURE. WHERE REASONABLE, PIECE PART TOLERANCES MAY BE LOOSENER, PROVIDED FINAL WELDMENT CONFORMS TO D080462.

REV.	DATE	DCN #	DRAWING TREE #
v1 / 01	05 Aug 2008	Initial release for LASTI prototype.	
v2	28 Aug 2009	E0900261	



8X  $\phi$  .422 THRU ALL  
1/2-13 UNC THRU ALL  
 $\sphericalangle$   $\phi$  .60 X 120°, BOTH SIDES  
 $\oplus$   $\phi$  .005 A B C

4X  $\phi$  1.25 THRU  
 $\sphericalangle$   $\phi$  1.40 X 90°, BOTH SIDES  
 $\oplus$   $\phi$  .010 (M) A B C

Total Weight: 35.7 lbs

NOTES AND TOLERANCES: (UNLESS OTHERWISE SPECIFIED)

- INTERPRET DRAWING PER ASME Y14.5-1994.
- REMOVE ALL SHARP EDGES, R.02 MIN.
- DO NOT SCALE FROM DRAWING.
- ALL MACHINING FLUIDS MUST BE FULLY SYNTHETIC, FULLY WATER SOLUBLE AND FREE OF SULFUR, SILICONE, AND CHLORINE.

MATERIAL: ASTM A36 Steel  
FINISH: 125  $\mu$ inch

**LIGO** CALIFORNIA INSTITUTE OF TECHNOLOGY  
MASSACHUSETTS INSTITUTE OF TECHNOLOGY

SYSTEM: ADVANCED LIGO  
SUB-SYSTEM: SEI  
NEXT ASSY: D080462

PART NAME: HAM Crossbeam Connector Mount Plate

DESIGNER	A. Stein	18 Jun 2008	SIZE	DWG. NO.	REV.
DRAFTER	A. Stein	18 Jun 2008	c	D080460	v2
CHECKER	-				
APPROVAL	K. Mason	28 Aug 2009	SCALE: 1:2	PROJECTION:	SHEET 1 OF 1