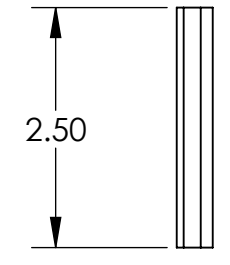
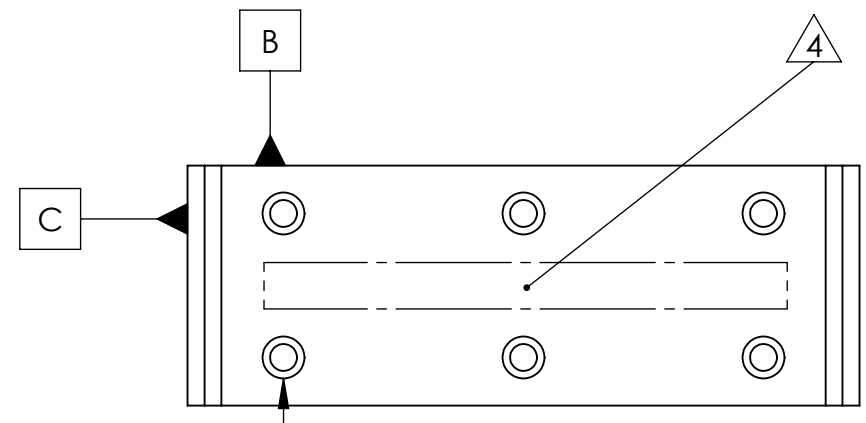
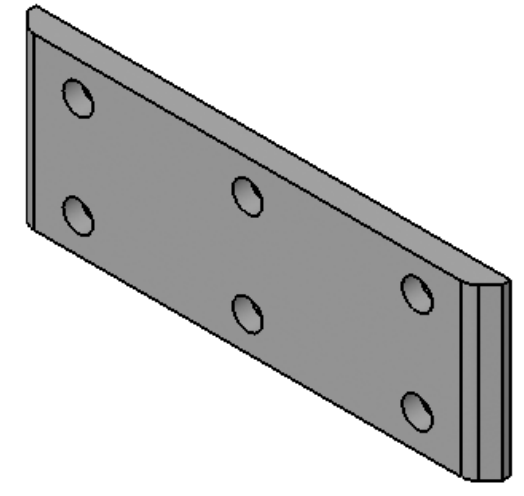
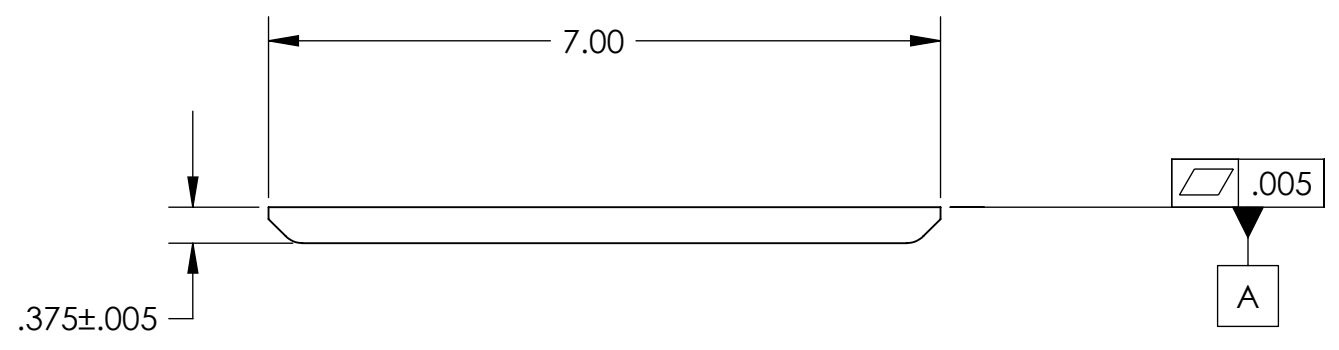


REVISION HISTORY				
REV	DATE	ECO	APPROVAL	DESCRIPTION
V1 / B	1 Jun 2007	1062	D. Senders	Release for Enhanced LIGO.
V2	21 Apr 2009		A. Stein	Release for Advanced LIGO. Only changed dwg notes.



6X  $\phi$  .281 THRU ALL  
 $\square$   $\phi$  .438  $\nabla$  .27  
 $\oplus$   $\phi$  .010 (M) A B C

MANUFACTURING NOTES:

- 1) MACHINE ALL SURFACES TO REMOVE OXIDES AND MILL FINISH. ABRASIVE REMOVAL TECHNIQUES (OTHER THAN DRESSED BLANCHARD GRINDING) ARE NOT ACCEPTABLE.
- 2) ALL MACHINING FLUIDS MUST BE WATER SOLUBLE AND FREE OF SULFUR, CHLORINE, AND SILICONE, SUCH AS CINCINNATI MILACRON CIMTECH 410.
- 3) THOROUGHLY CLEAN PART TO REMOVE ALL OIL, GREASE, DIRT, AND CHIPS.
- 4) WHERE INDICATED, MECHANICALLY SCRIBE, STAMP, OR ENGRAVE THE FOLLOWING INFORMATION AS SHOWN BELOW: **PART NUMBER-REVISION** (AND **TYPE** IF INDICATED), FOLLOWED ON THE NEXT LINE WITH A UNIQUE 3-DIGIT **SERIAL NUMBER** STARTING AT 001 FOR THE FIRST PART AND INCREMENTING THEREAFTER. USE 0.38" TALL CHARACTERS UNLESS PART SIZE DICTATES SMALLER.

D071312-V2  
 S/N - ###

POST-MANUFACTURING NOTES:

- P1) CLEAN TO LIGO STANDARDS, CLASS B (PER E0900047 AND E960022).

APPROVALS	DATE
ENGINEERING (HPD): D. Senders	6/1/2007
QUALITY (HPD): C. Danaher	6/1/2007
MATERIAL:	<b>PTFE</b>
FINISH:	<b>None</b>
MASS:	<b>0.5 lbs</b>

**UNLESS OTHERWISE SPECIFIED:**  
 DIMENSIONS ARE IN INCHES  
 DECIMAL TOLERANCES:  
 .XX  $\pm$ .015 .XXX  $\pm$ .005  
 ANG TOL:  $\pm$  1° SURFACE ROUGHNESS: 63  
 REMOVE ALL SHARP EDGES.  
 LEAVE .005 X 45° MIN CHAMFER,  
 OR .005 MIN RADIUS.  
 THIS PRINT & THE EMBEDDED CAD  
 MODEL ARE THE DOCUMENTATION OF  
 RECORD. UNLESS OTHERWISE SPECIFIED,  
 ALL DIMENSIONS IN THE MODEL ARE  
 BASIC, WITH TOLERANCES GIVEN BY:

$\frac{1}{4}$  .010 A B C

ORIGINAL DESIGN BY:		<b>High Precision Devices</b>		MODIFIED BY:
		1668 Valtec Lane, Suite C, Boulder, Colorado 80301		
		Phone: (303) 447-2558 Fax: (303) 447-2548 Web Site: www.hpd-online.com		
DESCRIPTION: <b>GS-13 Install, Standoff</b>				
P/N: <b>D071312</b>		CONFIG: -		
CAD FILE NAME: D071312_GS-13_Install-Standoff				
PROJECT: HAM ISI, Advanced LIGO				
SIZE	SCALE: <b>1:2</b>	DRAWN BY: <b>Dave Senders (HPD)</b>		REV
<b>B</b>	SHEET <b>1</b> OF <b>1</b>	DATE PRINTED: <b>4/21/2009</b>		<b>V2</b>