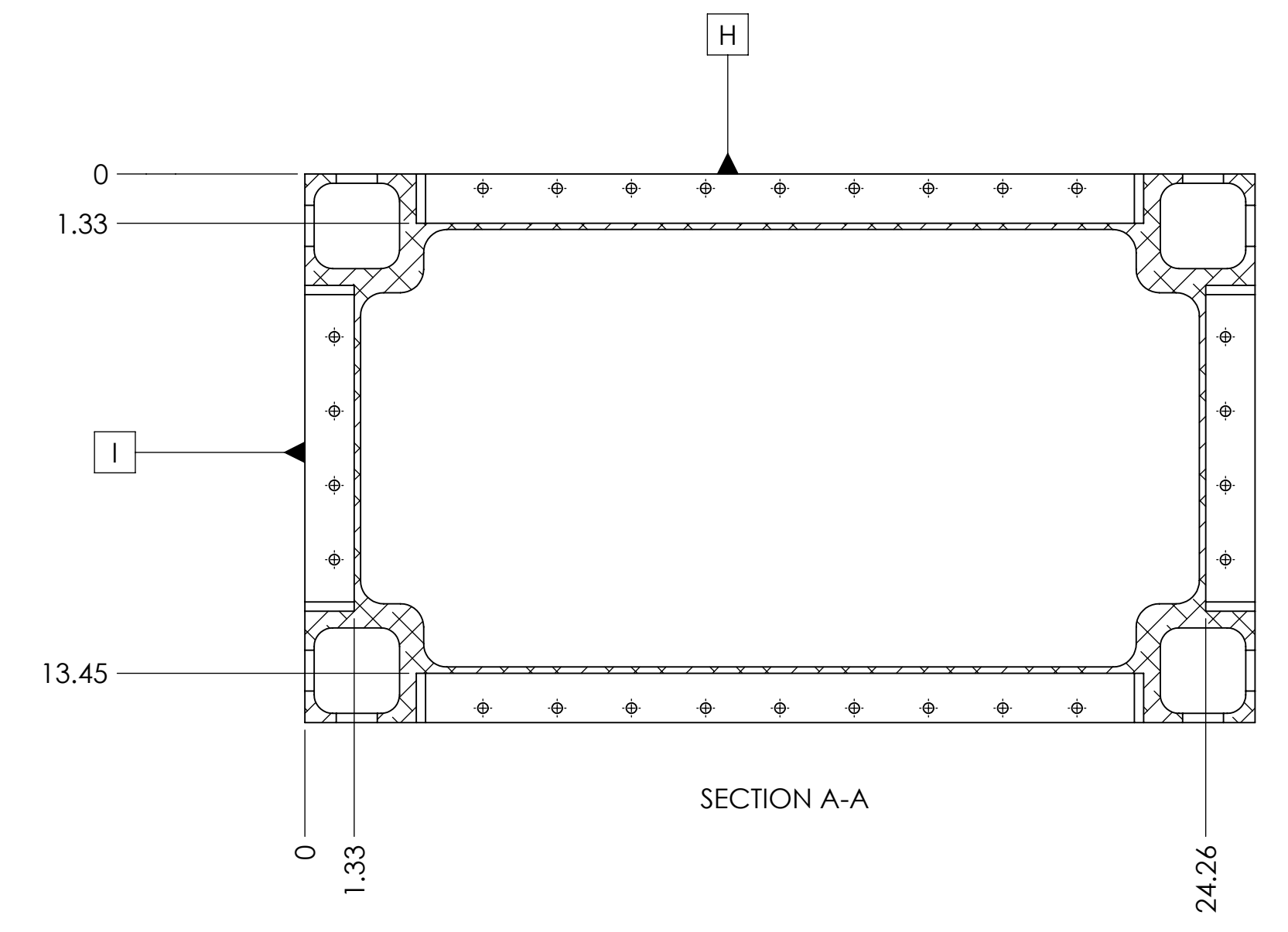
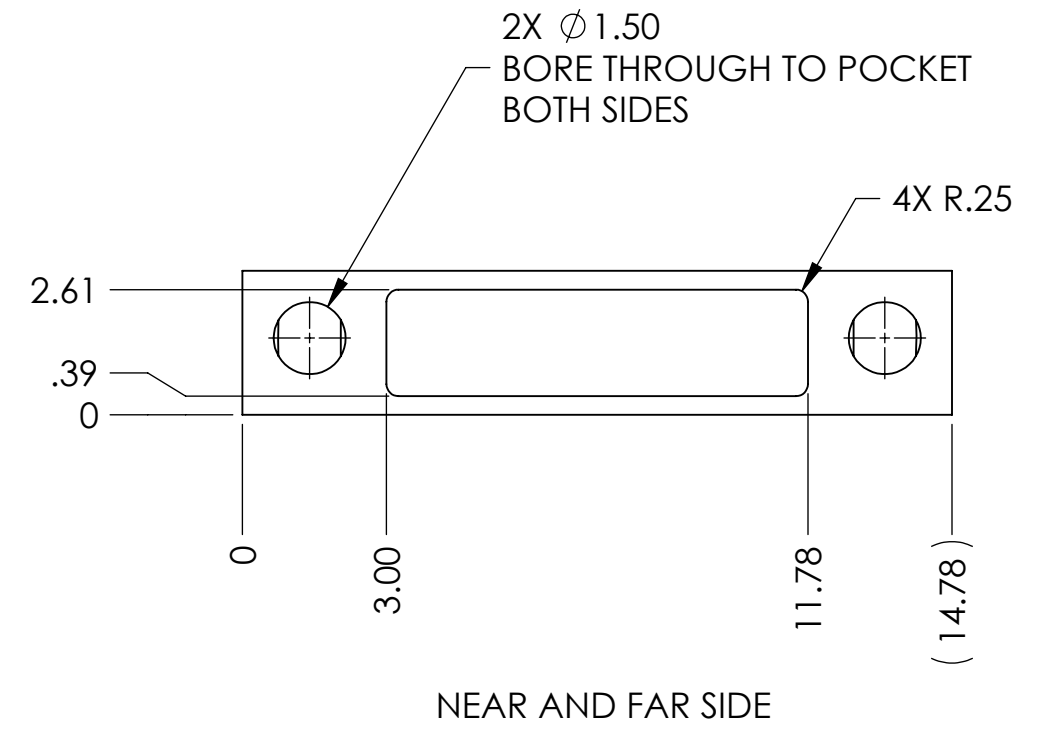
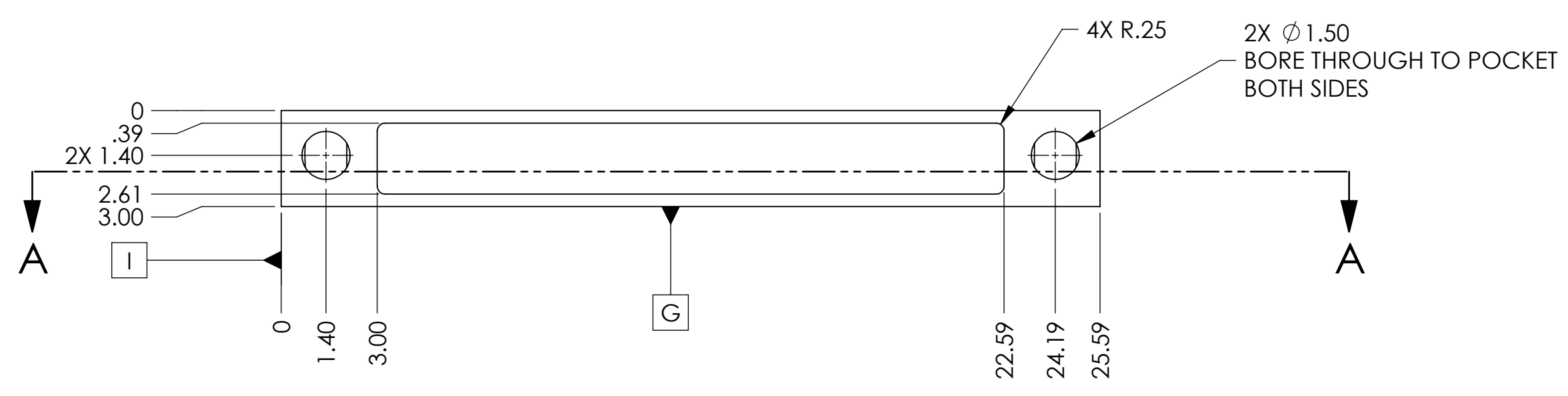
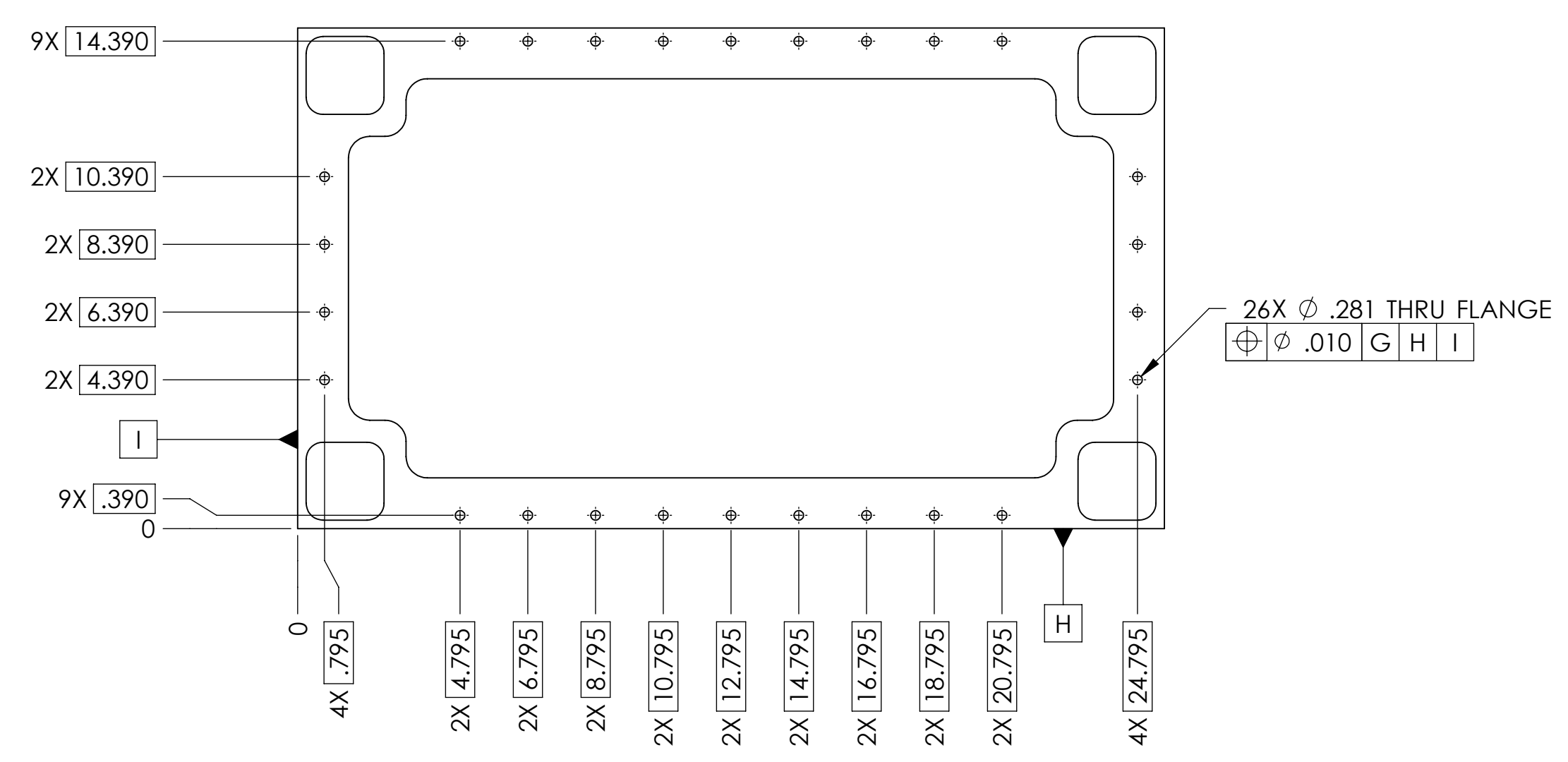


ISOMETRIC VIEW
FOR REFERENCE ONLY
NOT TO SCALE



SECTION A-A



This piece is part of a weldment. Dimensions shown are approximate; weld induced shrinkage or fill, and post weld annealing and machining considerations are not included. See D0900308-v1 for required dimensions of structure after welding.

<p>NOTES: (UNLESS OTHERWISE SPECIFIED)</p> <p>1. REMOVE ALL SHARP EDGES: R.02 MIN. DIMENSIONS ARE IN INCHES</p> <p>2. DO NOT SCALE FROM DRAWING.</p> <p>3. ALL MACHINING FINISHES SHALL BE WATER SOLUBLE AND FREE OF SULFUR, CHLORINE AND SILICONE, SUCH AS CONFORMAL MACHINING CHEMICAL 410 (SST).</p> <p>4. Scribe, engrave, or mechanically stamp (NO INKS OR DYES) DRAWING PART NUMBER AND REVISION ON HOLED SURFACE FOLLOWED ON THE NEXT LINE BY A THREE DIGIT SERIAL NUMBER. SERIAL NUMBERS START AT 001 FOR THE FIRST ARTICLE AND PROCEED CONSECUTIVELY. USE .07" HIGH CHARACTERS. EXAMPLE: D0900001-V1-SN 001. A VIBRATORY TOOL MAY BE USED.</p>		<p>TOLERANCES:</p> <p>XXX ± .01</p> <p>XXX ± .005</p> <p>ANGULAR ± 0.5°</p>	
<p>MATERIAL: 6061-T6 Al</p>		<p>PART NAME: ADVANCED LIGO</p>	
<p>FINISH: 63 μinch</p>		<p>SUB-SYSTEM: SUS</p>	
<p>DESIGNER: M. METTER</p>		<p>NEXT ASSY: D0900308</p>	
<p>DRAWN: B. MICHAELS</p>		<p>PART NAME: BASE PLATE, OMC STRUCTURE</p>	
<p>CHECKED: M. METTER</p>		<p>SIZE DWG. NO.: D0900346</p>	
<p>DATE: 04 MAR 2009</p>		<p>SCALE: 1:4</p>	
<p>DATE: 03 MAR 2009</p>		<p>PROJECTION: </p>	
<p>DATE: 16 APR 2009</p>		<p>REV: VI</p>	
<p>SHEET 1 OF 1</p>		<p>SHEET 1 OF 1</p>	