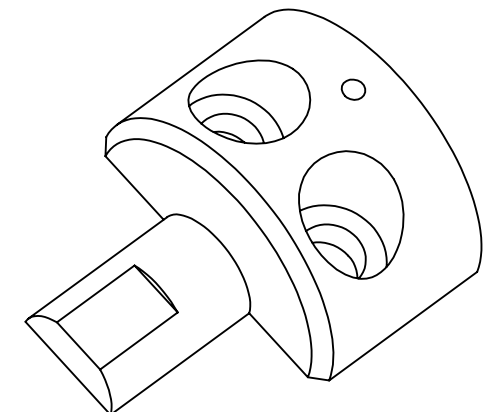
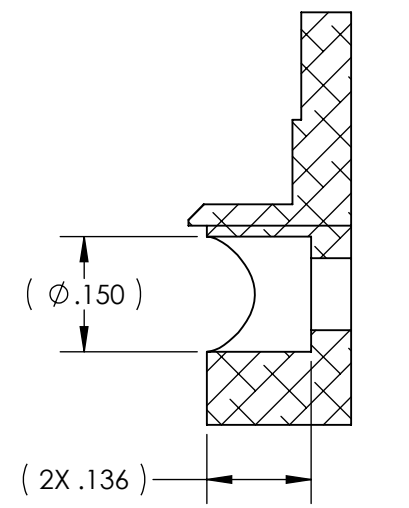
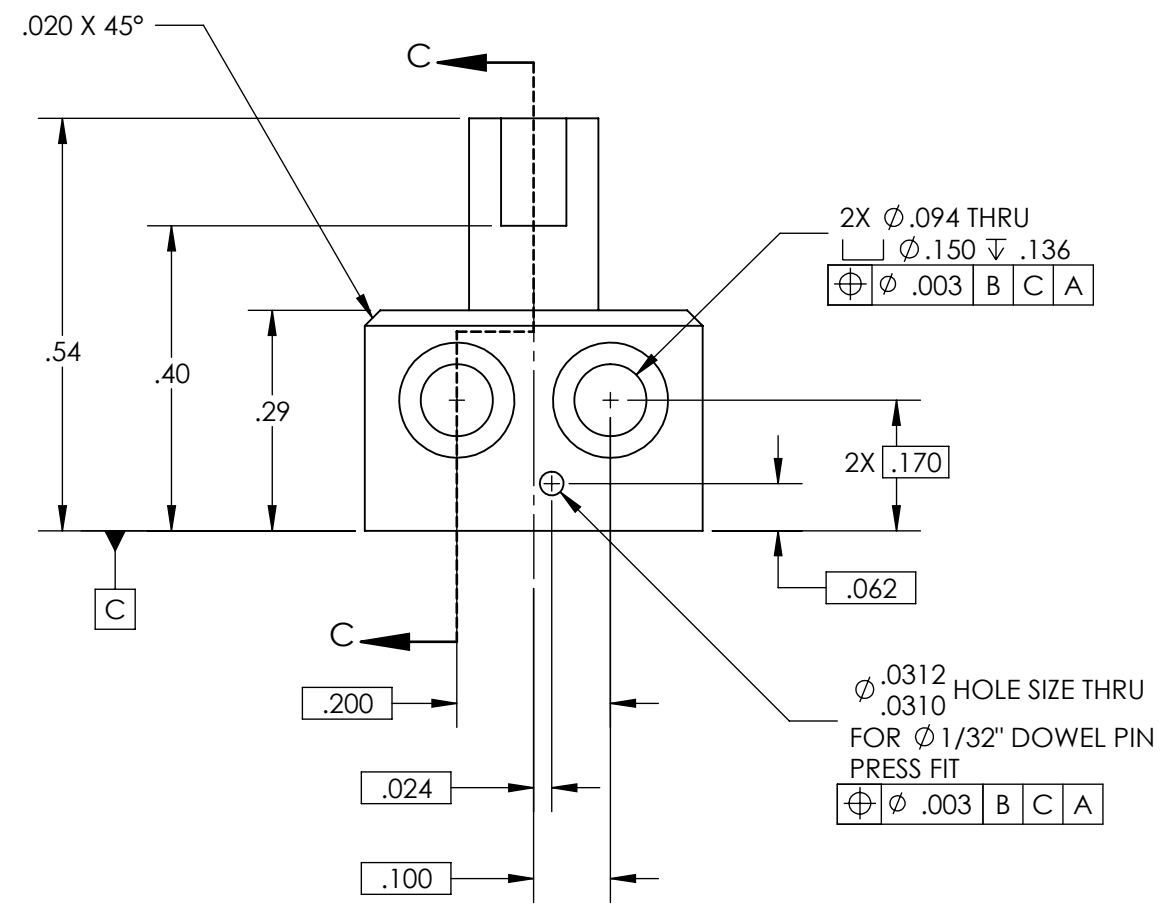
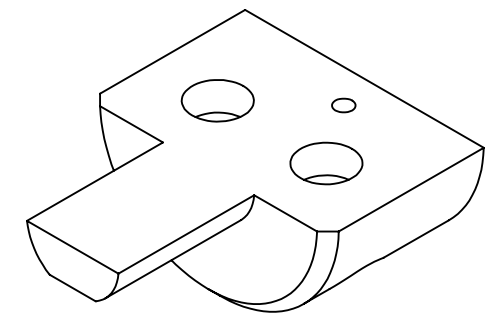
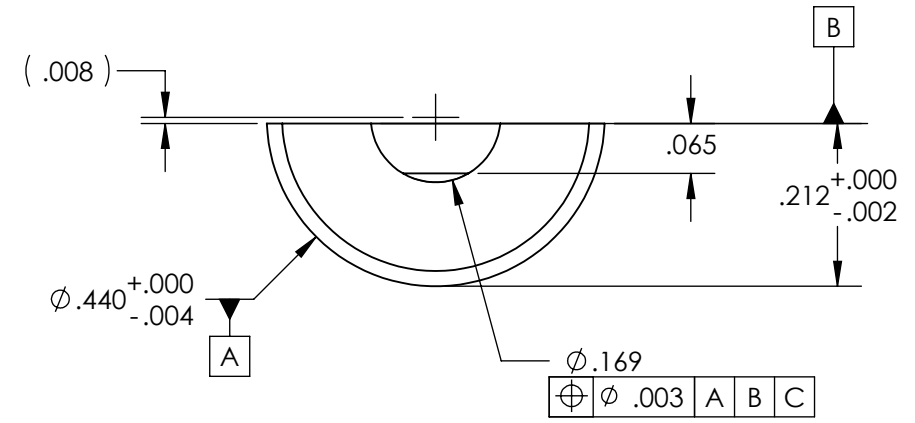


NOTES CONTINUED:
 5. SCRIBE, ENGRAVE, OR MECHANICALLY STAMP (NO DYES OR INKS) A UNIQUE THREE DIGIT SERIAL NUMBER & REVISION NUMBER ON EACH PART. SERIAL NUMBERS START AT 001 FOR THE FIRST ARTICLE AND PROCEED CONSECUTIVELY. BAG AND TAG PARTS WITH THEIR DRAWING PART NUMBER, REVISION, VARIANT OR "TYPE" (IF APPLICABLE), AND QUANTITY. IF PARTS ARE TOO SMALL TO SCRIBE, BAGGING AND TAGGING ALONE IS SUFFICIENT.
 EXAMPLE (PART): 001-v1
 EXAMPLE (TAG): DXXXXXX-VY, TYPE-XX, QTY: TBD

REV.	DATE	DCN #	DRAWING TREE #
v1	01 APR 2009	E0900244	
v2	07 OCT 2010	E1000563	

D 6. MACHINE ALL SURFACES TO REMOVE OXIDES AND MILL FINISH. USE OF ABRASIVE REMOVAL TECHNIQUES IS NOT ALLOWED.
 7. ALL PARTS SHALL BE MANUFACTURED IN ACCORDANCE WITH LIGO SPECIFICATION E0900364.



NOTES AND TOLERANCES: (UNLESS OTHERWISE SPECIFIED)				CALIFORNIA INSTITUTE OF TECHNOLOGY MASSACHUSETTS INSTITUTE OF TECHNOLOGY		PART NAME	
DIMENSIONS ARE IN INCHES TOLERANCES: .XX ± .005 .XXX ± .002 ANGULAR ± 0.5°				1. INTERPRET DRAWING PER ASME Y14.5-1994. 2. REMOVE ALL SHARP EDGES, R.02 MIN. 3. DO NOT SCALE FROM DRAWING. 4. ALL MACHINING FLUIDS MUST BE FULLY SYNTHETIC, FULLY WATER SOLUBLE AND FREE OF SULFUR, SILICONE, AND CHLORINE.		MUSIC WIRE SPLIT CLAMP 1	
MATERIAL 304, 316 OR 302 SSSL		FINISH 63 μinch		SYSTEM ADVANCED LIGO		SUB-SYSTEM AOS	
DIMENSIONS ARE IN INCHES				NEXT ASSY D0900586		DESIGNER N.Nguyen 18 Aug 2009	
DIMENSIONS ARE IN INCHES				CHECKER M. Smith 21 Aug 2009		SIZE DWG. NO. B D0900582	
DIMENSIONS ARE IN INCHES				APPROVAL		REV. v2	
DIMENSIONS ARE IN INCHES				SCALE: 1:1		PROJECTION:	
DIMENSIONS ARE IN INCHES				SHEET 1 OF 1		SHEET 1 OF 1	

D0900582_AdlIGO_AOS_D0900586_Music Wire Split Clamp 1, PART PDM REV: X-015, DRAWING PDM REV: X-013