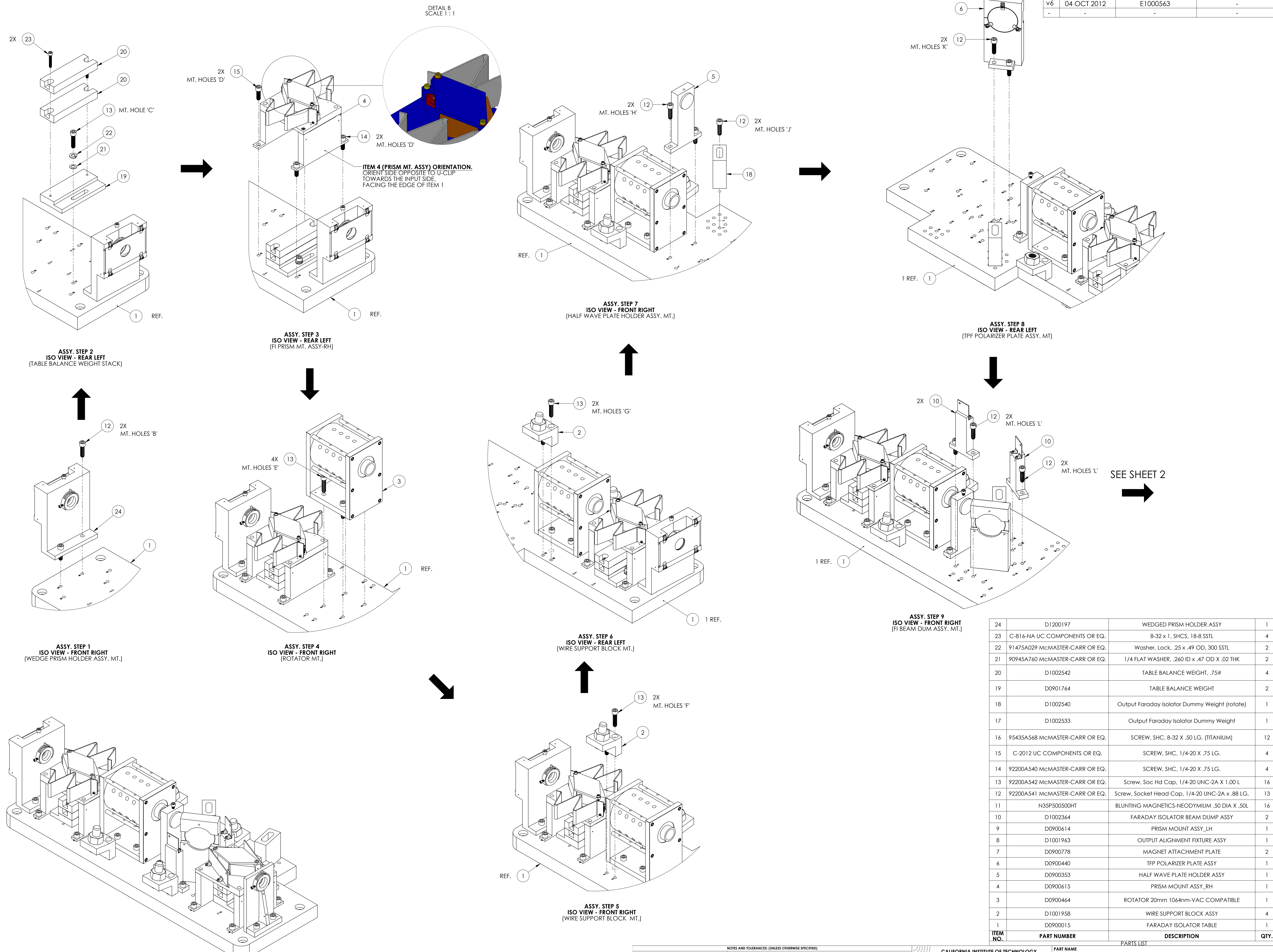


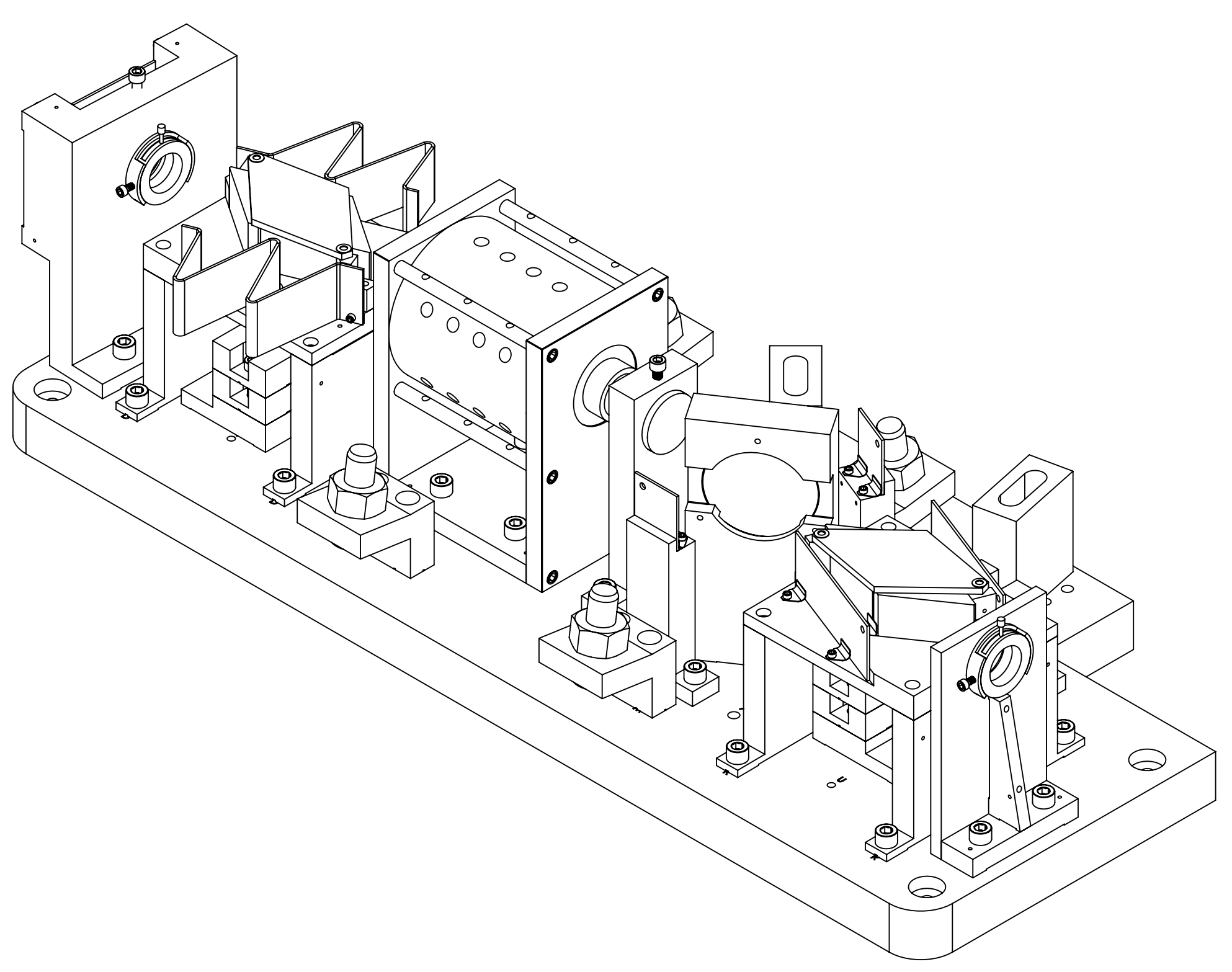
REV.	DATE	DCN #	DRAWING TREE #
v1	08 OCT 2010	E1000563	-
v6	04 OCT 2012	E1000563	-
-	-	-	-



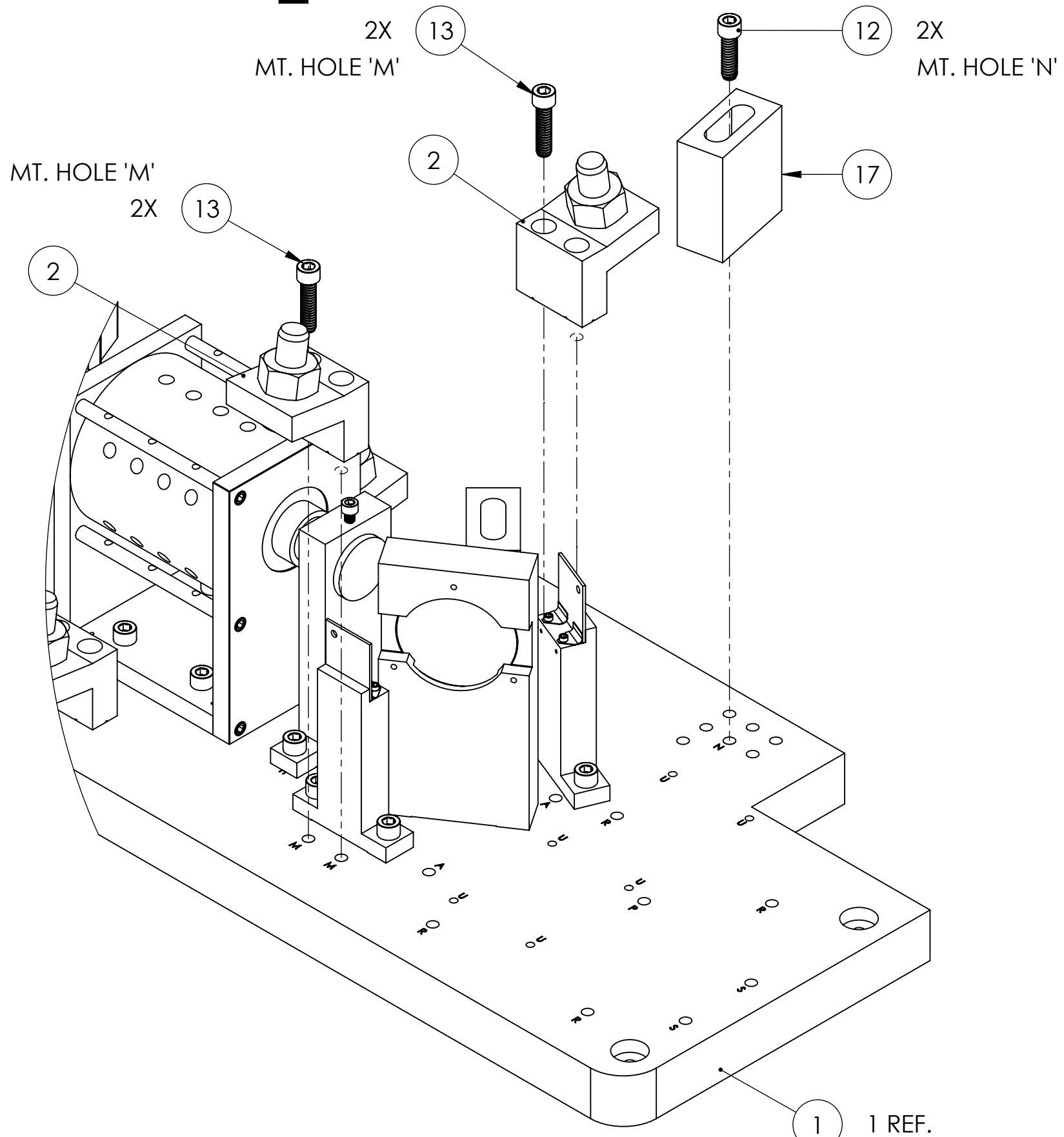
NOTES AND TOLERANCES: (UNLESS OTHERWISE SPECIFIED)		PART NAME		SIZE DWG. NO.		REV.
		CALIFORNIA INSTITUTE OF TECHNOLOGY MASSACHUSETTS INSTITUTE OF TECHNOLOGY		E		v6
MATERIAL --		FINISH --		SCALE: 1:2		PROJECTION:
NEXT ASSY		SUB-SYSTEM AOS		DESIGNER M.RUR		09/13/2010
				DRAFTER		
				CHECKER		
				APPROVAL		

D:\000023_04\000023_04\Faraday Isolator Table Assy PART FORMER X ITS DRAWING\CP\REV.X.X.X

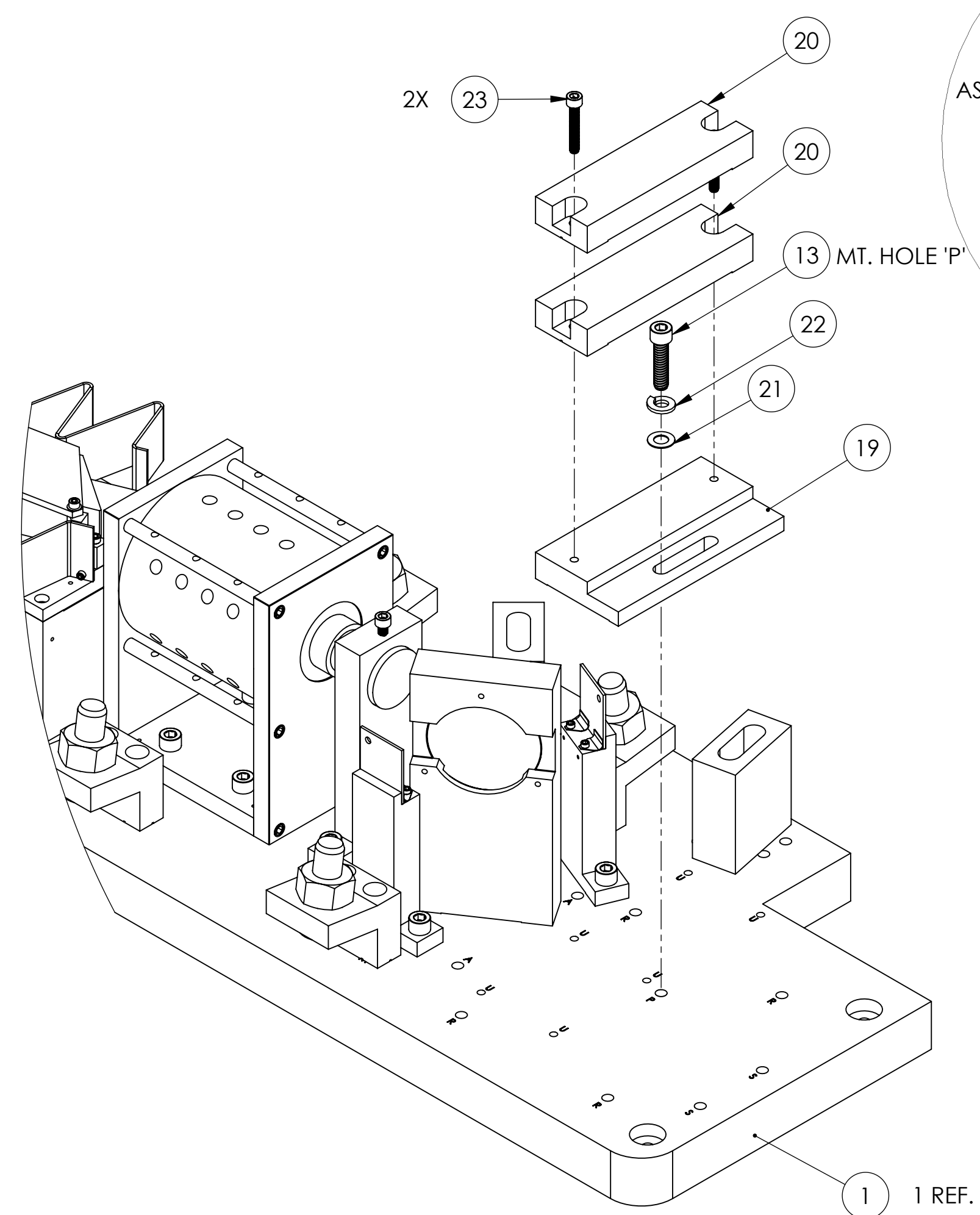
FROM SHEET 1



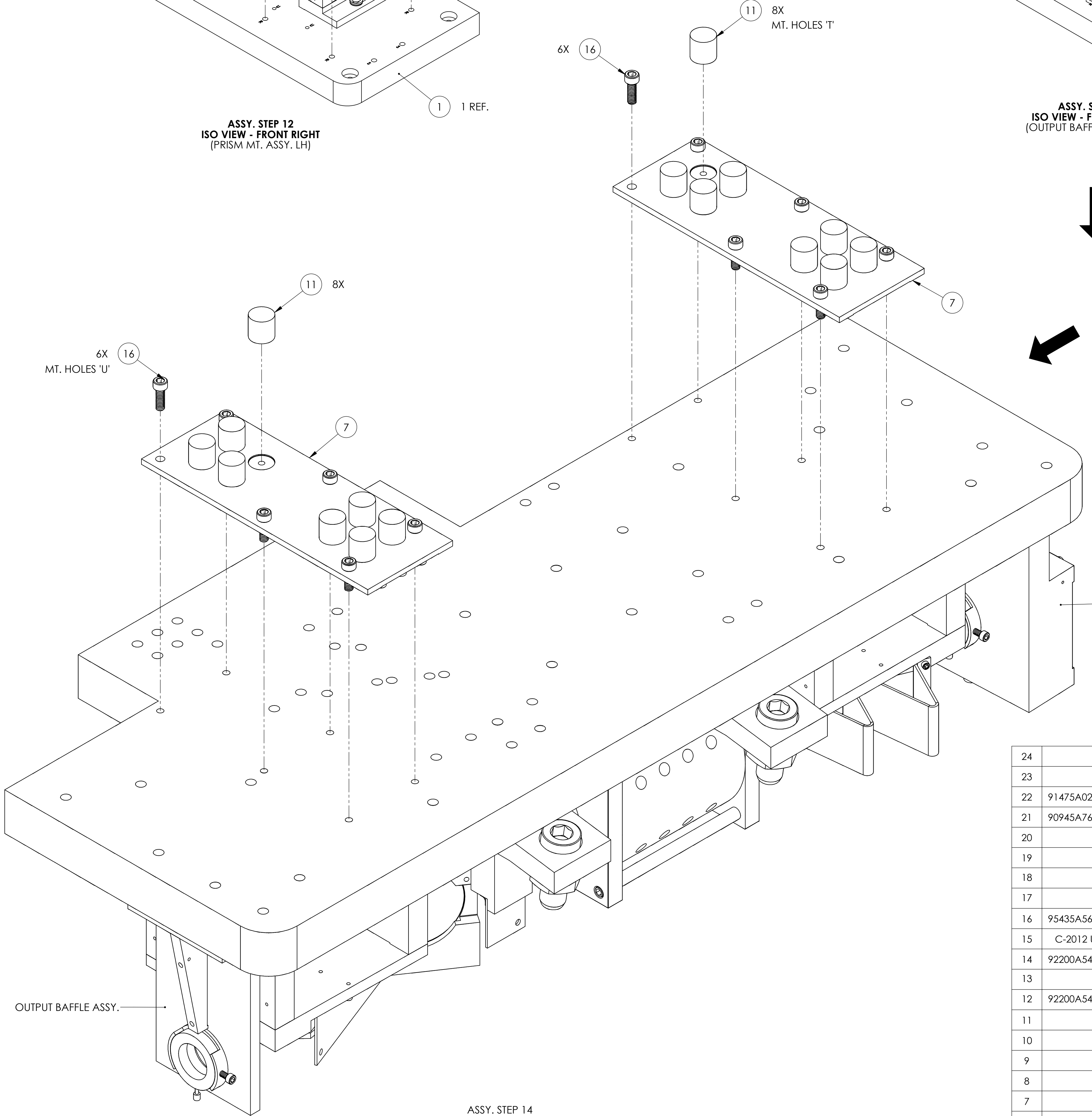
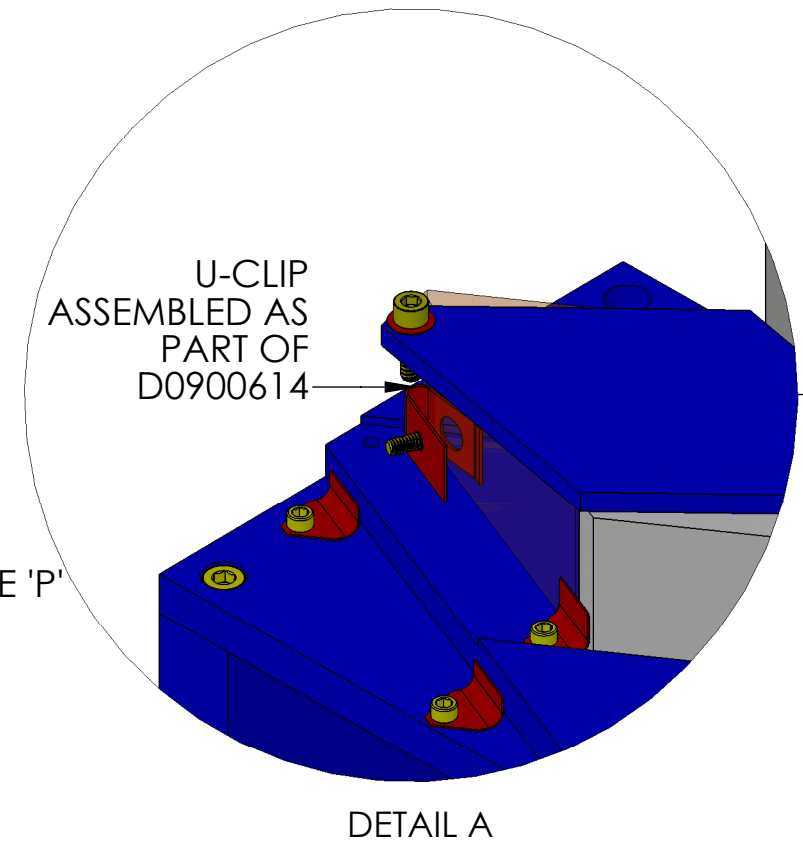
ASSY. STEP 10
ISO VIEW - FRONT RIGHT
(WIRE SUPPORT BLOCKS + DUMMY WEIGHT MT.)



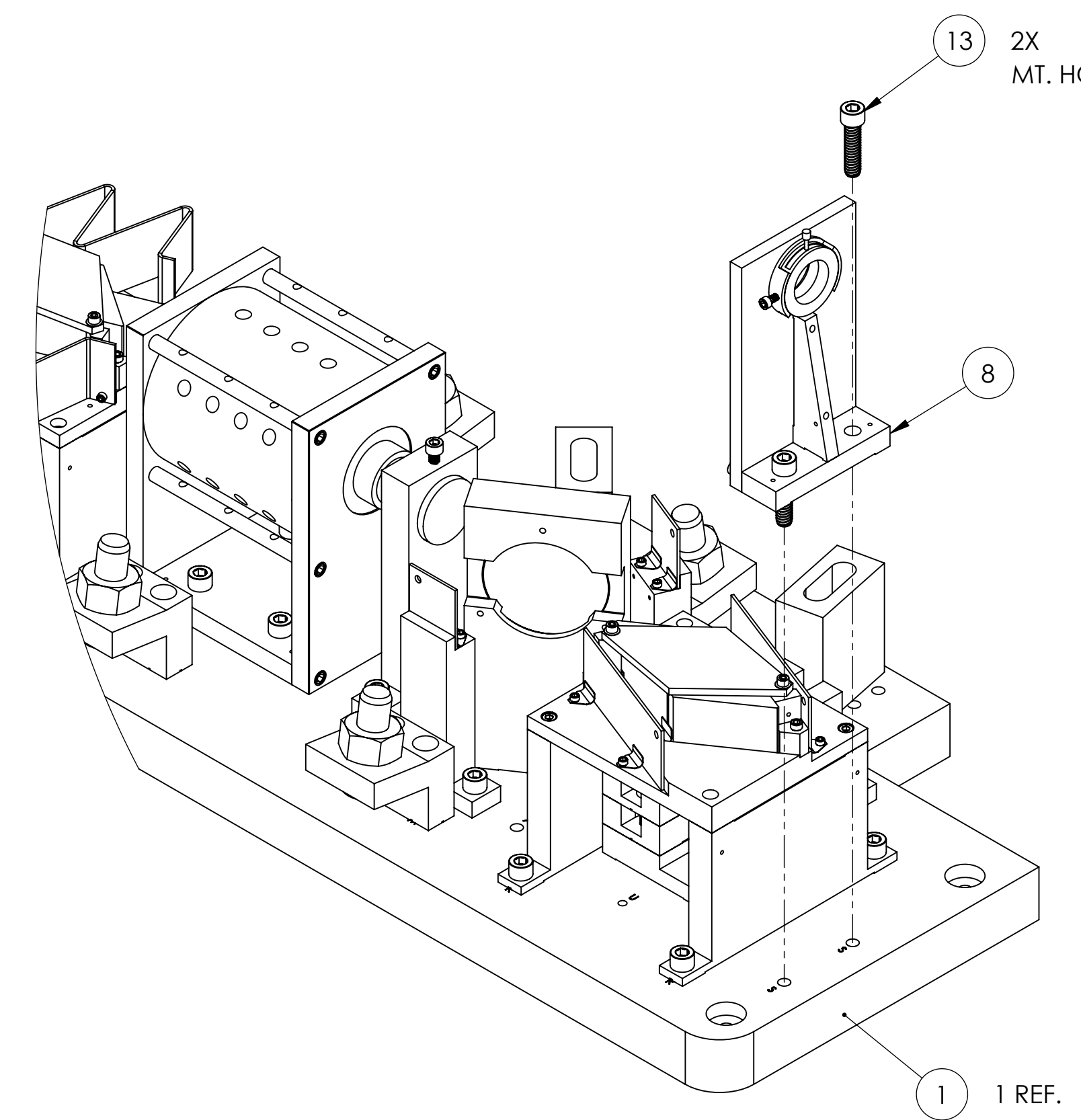
ASSY. STEP 11
ISO VIEW - FRONT RIGHT
(TABLE BALANCE WEIGHT STACK)



ASSY. STEP 12
ISO VIEW - FRONT RIGHT
(PRISM MT. ASSY. LH)



ASSY. STEP 14
ISO VIEW - UNDERSIDE
(MAGNET PLATE MT.)



ASSY. STEP 13
ISO VIEW - FRONT RIGHT
(OUTPUT BAFFLE ASSY. MT.)

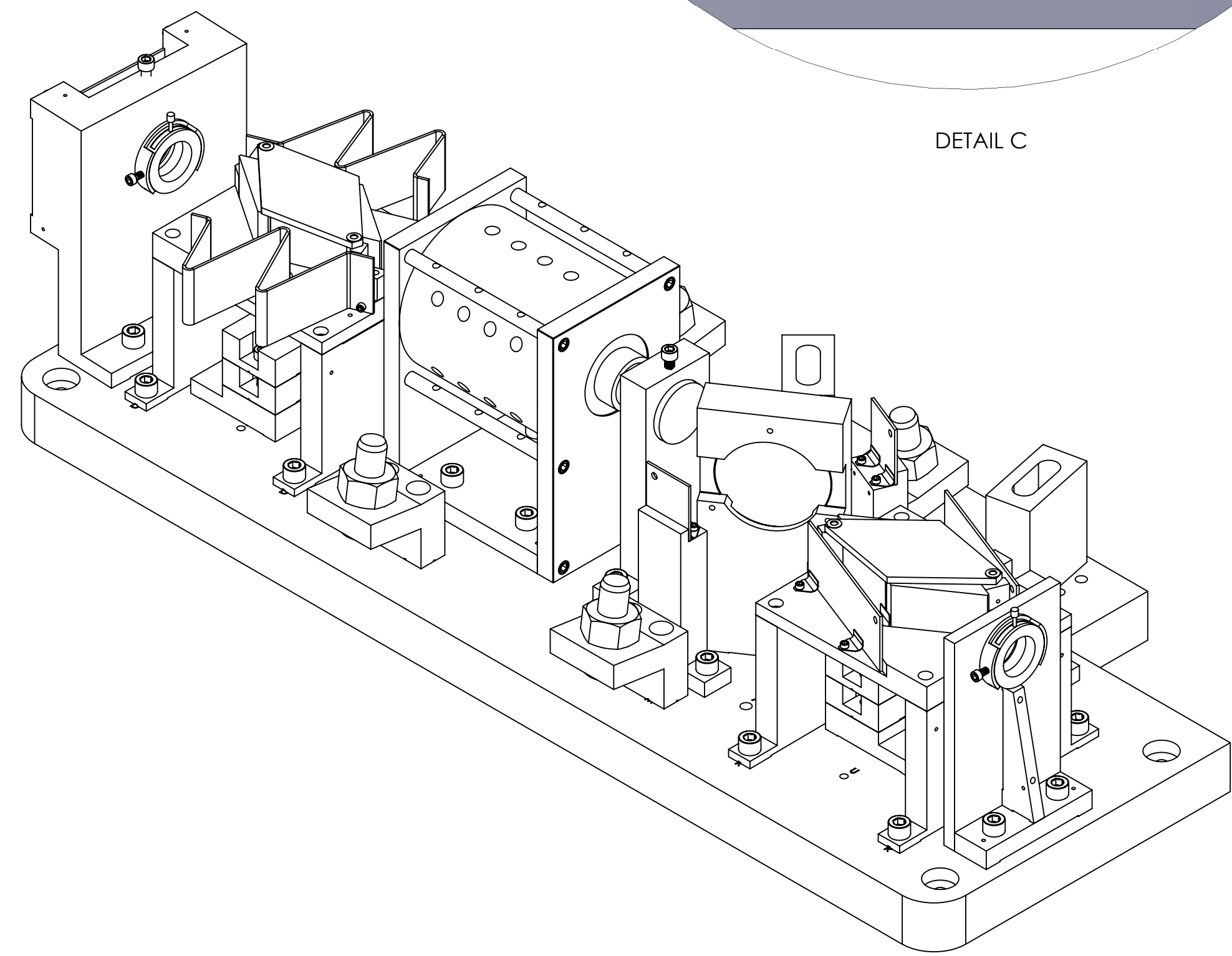
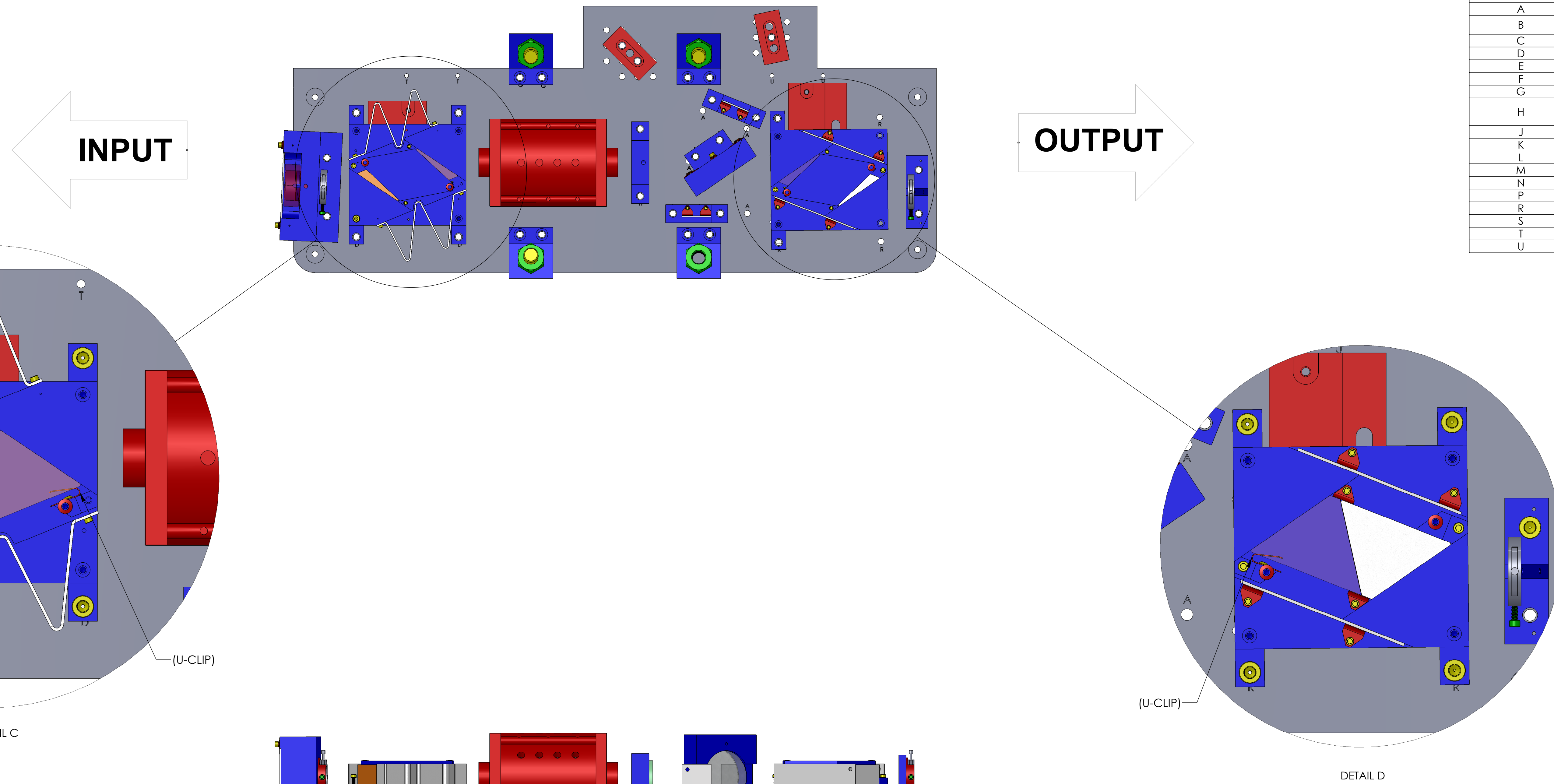
ITEM NO.	PART NUMBER	DESCRIPTION	QTY.
24	D1200197	WEDGED PRISM HOLDER ASSY	1
23	C-816-NA	8-32 x 1, SHCS, 18-8 SSSL	4
22	91475A029 MCMMASTER-CARR OR EQ.	Washer, Lock, .25 x .49 OD, 300 SSSL	2
21	90945A760 MCMMASTER-CARR OR EQ.	1/4 FLAT WASHER, .260 ID x .47 OD X .02 THK	2
20	D1002542	TABLE BALANCE WEIGHT, .75#	4
19	D0901764	TABLE BALANCE WEIGHT	2
18	D1002540	Output Faraday Isolator Dummy Weight (rotate)	1
17	D1002533	Output Faraday Isolator Dummy Weight	1
16	95435A568 MCMMASTER-CARR OR EQ.	SCREW, SHC, 8-32 X .50 LG. (TITANIUM)	12
15	C-2012 UC COMPONENTS OR EQ.	SCREW, SHC, 1/4-20 X .75 LG.	4
14	92200A540 MCMMASTER-CARR OR EQ.	SCREW, SHC, 1/4-20 X .75 LG.	4
13	92200A542	Screw, Soc Hd Cap, 1/4-20 UNC-2A X 1.00 L	16
12	92200A541 MCMMASTER-CARR OR EQ.	Screw, Socket Head Cap, 1/4-20 UNC-2A x .88 LG.	13
11	N35P500500HT	BLUNTING MAGNETICS-NEODYMIUM .50 DIA X .50L	16
10	D1002364	FARADAY ISOLATOR BEAM DUMP ASSY	2
9	D0900614	PRISM MOUNT ASSY_LH	1
8	D1001963	OUTPUT ALIGNMENT FIXTURE ASSY	1
7	D0900778	MAGNET ATTACHMENT PLATE	2
6	D0900440	TFP POLARIZER PLATE ASSY	1
5	D0900353	HALF WAVE PLATE HOLDER ASSY	1
4	D0900615	PRISM MOUNT ASSY_RH	1
3	D0900464	ROTATOR 20mm 1064nm-VAC COMPATIBLE	1
2	D1001958	WIRE SUPPORT BLOCK ASSY	4
1	D0900015	FARADAY ISOLATOR TABLE	1



ITEM NO. 1, TOP VIEW
 (HOLE DES. ARE FOR REFERENCE ONLY, AND DO NOT APPEAR ON ACTUAL PART)

ITEM NO.	PART NUMBER	DESCRIPTION	QTY.
24	D1200197	WEDGED PRISM HOLDER ASSY	1
23	C-816-NA	8-32 x 1, SHCS, 18-8 SS TL	4
22	91475A029 MCMMASTER-CARR OR EQ.	Washer, Lock, .25 x .49 OD, 300 SS TL	2
21	90945A760 MCMMASTER-CARR OR EQ.	1/4 FLAT WASHER, .260 ID x .47 OD X .02 THK	2
20	D1002542	TABLE BALANCE WEIGHT, .75#	4
19	D0901764	TABLE BALANCE WEIGHT	2
18	D1002540	Output Faraday Isolator Dummy Weight (rotate)	1
17	D1002533	Output Faraday Isolator Dummy Weight	1
16	95435A568 MCMMASTER-CARR OR EQ.	SCREW, SHC, 8-32 X .50 LG. (TITANIUM)	12
15	C-2012 UC COMPONENTS OR EQ.	SCREW, SHC, 1/4-20 X .75 LG.	4
14	92200A540 MCMMASTER-CARR OR EQ.	SCREW, SHC, 1/4-20 X .75 LG.	4
13	92200A542	Screw, Soc Hd Cap, 1/4-20 UNC-2A X 1.00 L	16
12	92200A541 MCMMASTER-CARR OR EQ.	Screw, Socket Head Cap, 1/4-20 UNC-2A x .88 LG.	13
11	N35P500500HT	BLUNTING MAGNETICS-NEODYMIUM .50 DIA X .50L	16
10	D1002364	FARADAY ISOLATOR BEAM DUMP ASSY	2
9	D0900614	PRISM MOUNT ASSY_LH	1
8	D1001963	OUTPUT ALIGNMENT FIXTURE ASSY	1
7	D0900778	MAGNET ATTACHMENT PLATE	2
6	D0900440	TFP POLARIZER PLATE ASSY	1
5	D0900353	HALF WAVE PLATE HOLDER ASSY	1
4	D0900615	PRISM MOUNT ASSY_RH	1
3	D0900464	ROTATOR 20mm 1064nm-VAC COMPATIBLE	1
2	D1001958	WIRE SUPPORT BLOCK ASSY	4
1	D0900015	FARADAY ISOLATOR TABLE	1

ASSEMBLY DATA		
MT. HOLE REF. DES.	'USED FOR'	ASSY. STEP NO.
A	'NOT USED'	-
B	'WEDGE PRISM HOLDER ASSY.'	STEP 1
C	'TABLE BALANCE WEIGHT STACK'	STEP 2
D	'FI PRISM MT. ASSY.-RH'	STEP 3
E	'ROTATOR'	STEP 4
F	'WIRE SUPPORT BLOCK'	STEP 5
G	'WIRE SUPPORT BLOCK'	STEP 6
H	'HALF WAVE PLATE HOLDER ASSY.'	STEP 7
J	DUMMY WEIGHT	
K	'TFP POLARIZER PLATE ASSY.'	STEP 8
L	'FI BEAM DUMP ASSY.'	STEP 9
M	WIRE SUPPORT BLOCK (QTY. 2)	STEP 10
N	DUMMY WEIGHT	
P	'TABLE BALANCE WEIGHT STACK'	STEP 11
R	'FI PRISM MT. ASSY.-LH'	STEP 12
S	'OUTPUT BAFFLE ASSY.'	STEP 13
T		
U	MAGNET PLATE MT.	STEP 14



ISO VIEW