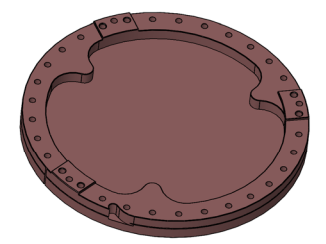
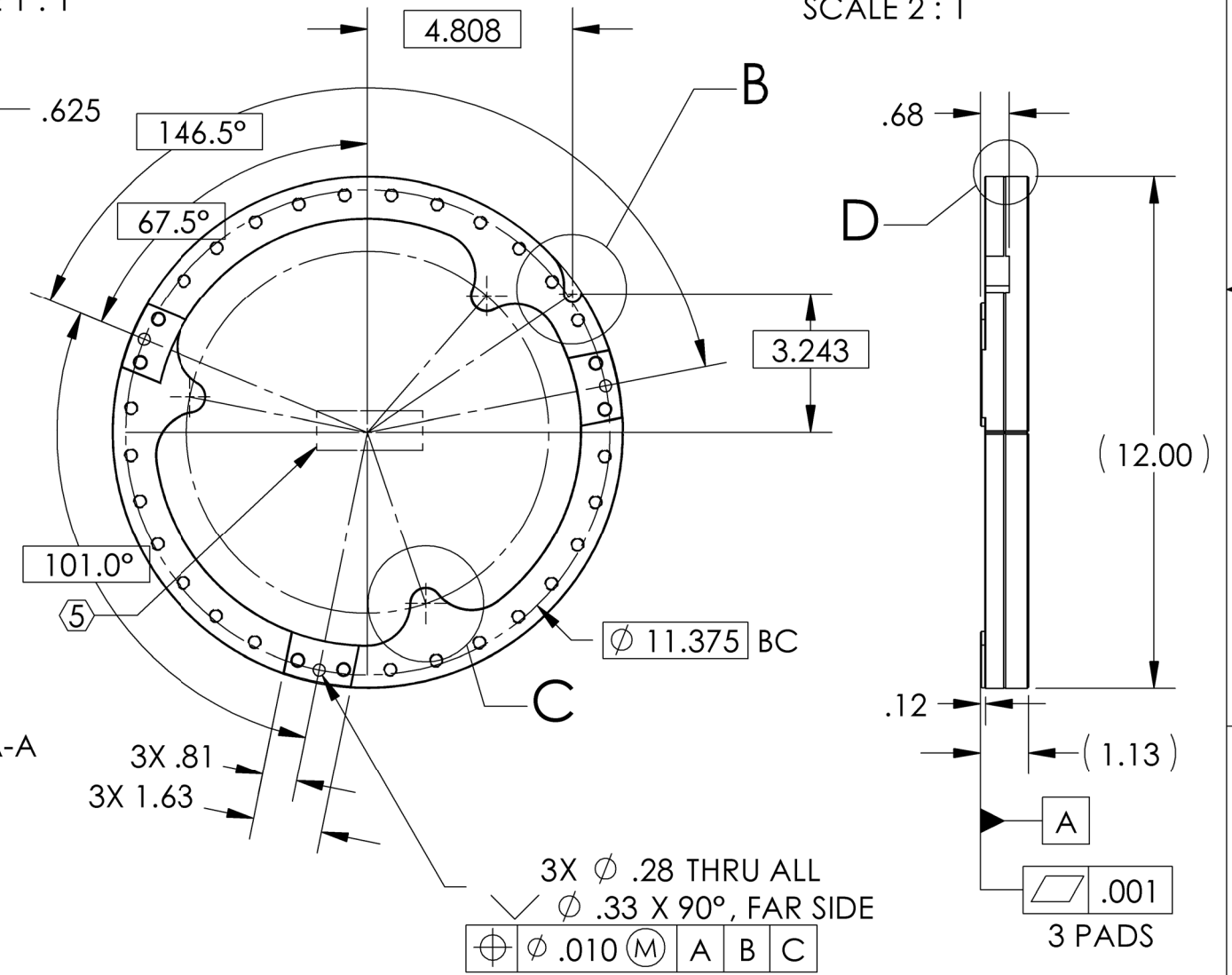
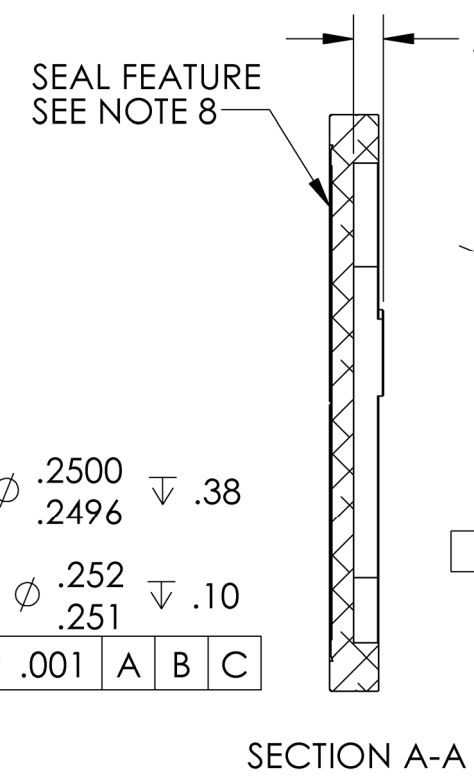
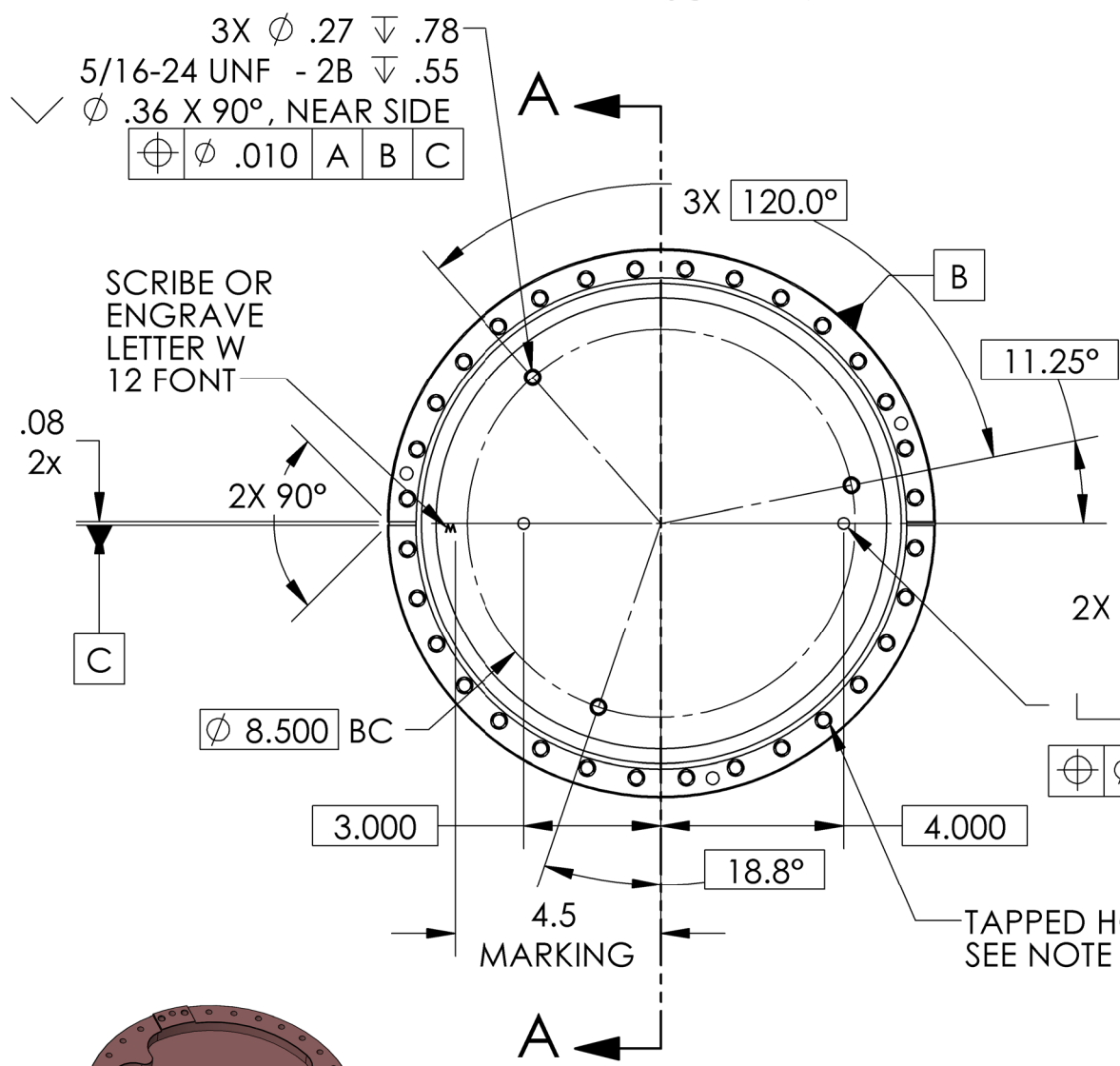
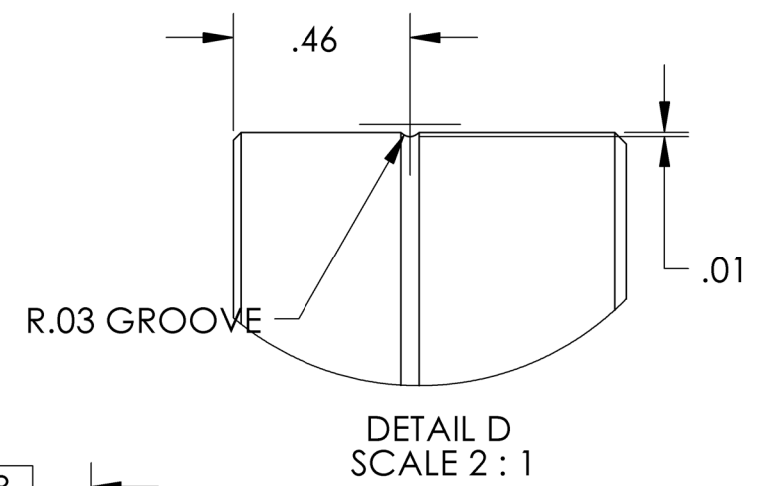
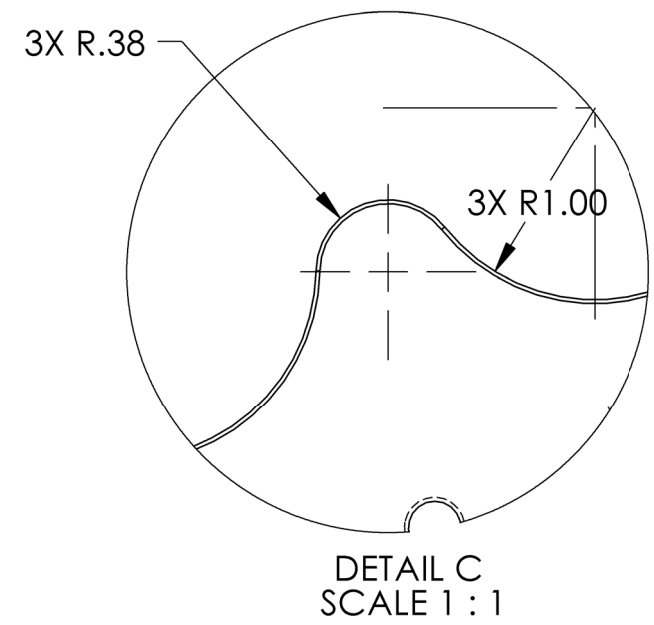
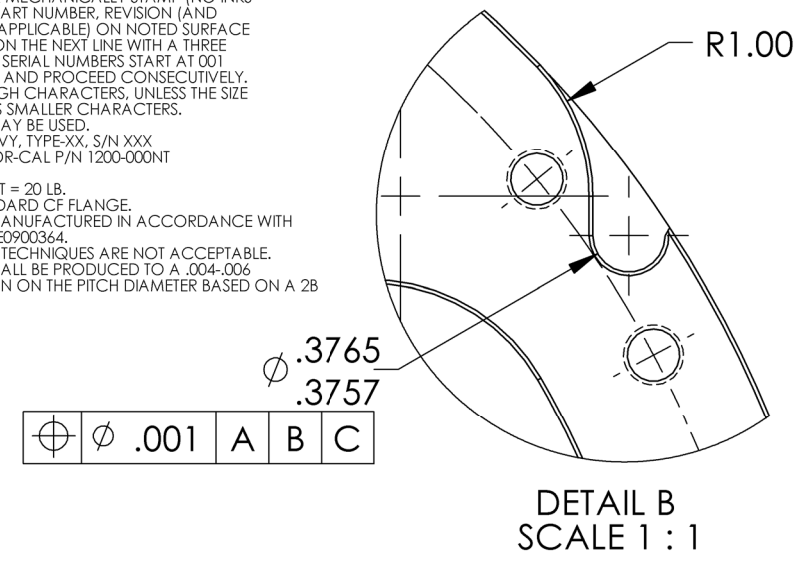


REV.	DATE	DCN #	DRAWING TREE #
v1	26 Jan. 2010	E0900443-X0	E1000025
v2	22 MAR 2010	E0900443-V1	E1000025

NOTES CONTINUED:
 3. SCRIBE, ENGRAVE, OR MECHANICALLY STAMP (NO INKS OR DYES) DRAWING PART NUMBER, REVISION (AND VARIANT OR 'TYPE' IF APPLICABLE) ON NOTED SURFACE OF PART FOLLOWED ON THE NEXT LINE WITH A THREE DIGIT SERIAL NUMBER. SERIAL NUMBERS START AT 001 FOR THE FIRST ARTICLE AND PROCEED CONSECUTIVELY. USE MINIMUM 0.12" HIGH CHARACTERS, UNLESS THE SIZE OF THE PART DICTATES SMALLER CHARACTERS. A VIBRATORY TOOL MAY BE USED.
 EXAMPLE: DXXXXXX-VY, TYPE-XX, S/N XXX
 6. MODIFICATION TO NOR-CAL P/N 1200-000NT OR EQUIVALENT.
 7. APPROXIMATE WEIGHT = 20 LB.
 8. INCLUDED WITH STANDARD CF FLANGE.
 9. ALL PARTS SHALL BE MANUFACTURED IN ACCORDANCE WITH LIGO SPECIFICATION E0900364.
 10. ABRASIVE REMOVAL TECHNIQUES ARE NOT ACCEPTABLE.
 11. THREADED HOLES SHALL BE PRODUCED TO A .004-.006 OVERSIZE CONDITION ON THE PITCH DIAMETER BASED ON A 2B CONDITION.



NOTES AND TOLERANCES: (UNLESS OTHERWISE SPECIFIED)				LIGO CALIFORNIA INSTITUTE OF TECHNOLOGY MASSACHUSETTS INSTITUTE OF TECHNOLOGY		PART NAME	
DIMENSIONS ARE IN INCHES TOLERANCES: .XX ± .015 .XXX ± .005 ANGULAR ± 0.1°				1. INTERPRET DRAWING PER ASME Y14.5-1994. 2. REMOVE ALL SHARP EDGES, R.02 MIN. 3. DO NOT SCALE FROM DRAWING. 4. ALL MACHINING FLUIDS MUST BE FULLY SYNTHETIC, FULLY WATER SOLUBLE AND FREE OF SULFUR, SILICONE, AND CHLORINE.		Trillium Pod Base Flange	
MATERIAL		FINISH		NEXT ASSY		DESIGNER	
304 SSSL SEE NOTE 6		63 μinch		D0900648		S.Barnum	
						2 Dec. 2009	
						SIZE DWG. NO.	
						B D0900650	
						REV.	
						v2	
						SCALE: 1:4	
						PROJECTION:	
						SHEET 1 OF 1	

D0900650_Trillium_Pod_BaseFlange, PART PDM REV: X-029, DRAWING PDM REV: X-010