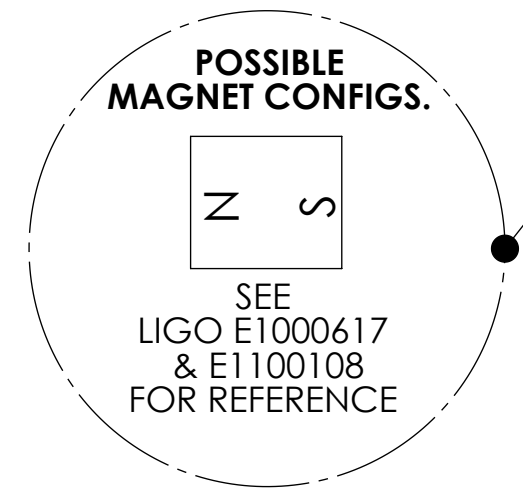
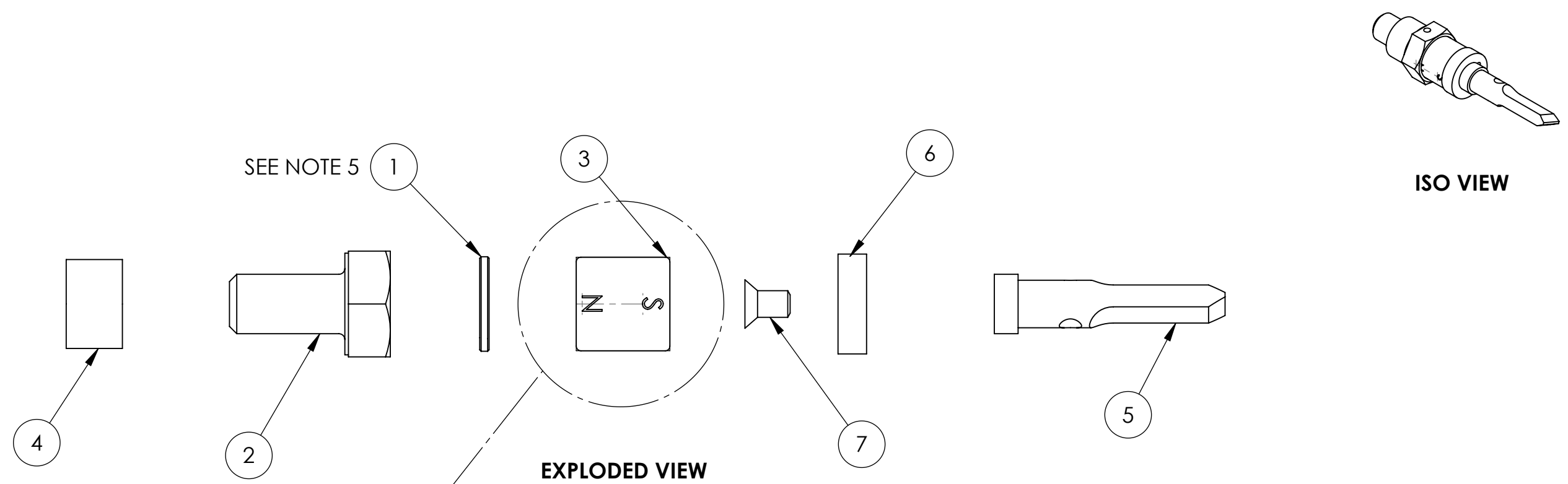


REV.	DATE	DCN #	DRAWING TREE #
v4	29 APR 2014	E1300970-x0	-
-	-	-	-
-	-	-	-

- NOTES:
- STEEL PLUGS ARE PRESS FITTED IN TO ALUMINUM AND SSTL PARTS
  - SUPPLY ALL ASSEMBLIES IN PART FORM.



ITEM NO.	PART NUMBER	DESCRIPTION	MATERIAL	QTY.
7	96877A198 McMASTER-CARR OR EQ.	SCREW, FLAT HEAD 4-40 X 3/16 LG	18-8 SSTL	1
6	D1100574	BOSEM FLAT FLAG DISK αLIGO SUS	416 SSTL	1
5	D1100573	BOSEM FLAG , αLIGO SUS	6061-T6 Al	1
4	D1003126	αLIGO, SUS, TOP MASS, FLAG SPACER	6061-T6 Al	1
3	D0901344	10 MM DIA X 10 MM MAGNET	NEO 35 (NdFeB)	1
2	D1003127	αLIGO, SUS, TOP MAS QUAD, MAGNET RETAINER	304, 316 OR 302 SSTL	1
1	D060401	MAGNET PLUG, αLIGO SUS	416 SSTL	1

DRAWING UPDATED TO CURRENT CAD FORMAT BY E.SANCHEZ 04/29/2014

NOTES AND TOLERANCES: (UNLESS OTHERWISE SPECIFIED)

MATERIAL	N/A	FINISH	N/A μinch	SYSTEM	ADVANCED LIGO	SUB-SYSTEM	SUS	PART NAME	Magnet and Flag Assembly			REV.	v4
				NEXT ASSY	D060409			DESIGNER	I. WILMUT	30/03/11	SIZE DWG. NO.	B	D060416
							CHECKER	MB	15 MAR 2010	SCALE:	1:1	PROJECTION:	SHEET 1 OF 1
							APPROVAL	JOD	15 MAR 2010				

D060416 αLIGO, SUS, QUAD TOP MASS, OSEM MAGNET FLAG ASSY., PART PDM REV: X-034, DRAWING PDM REV: X-000