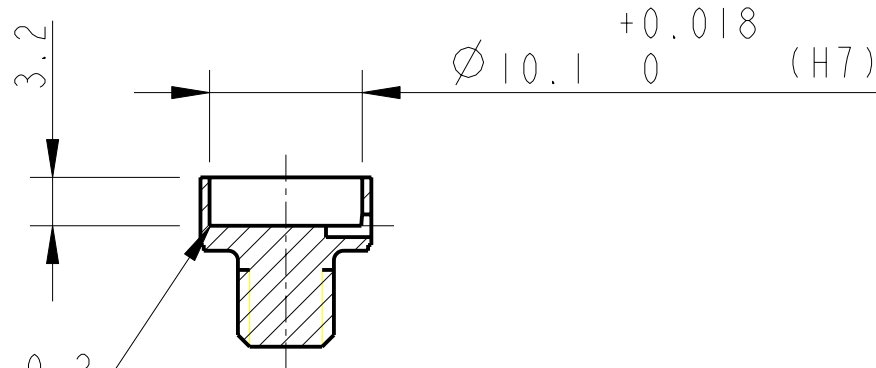
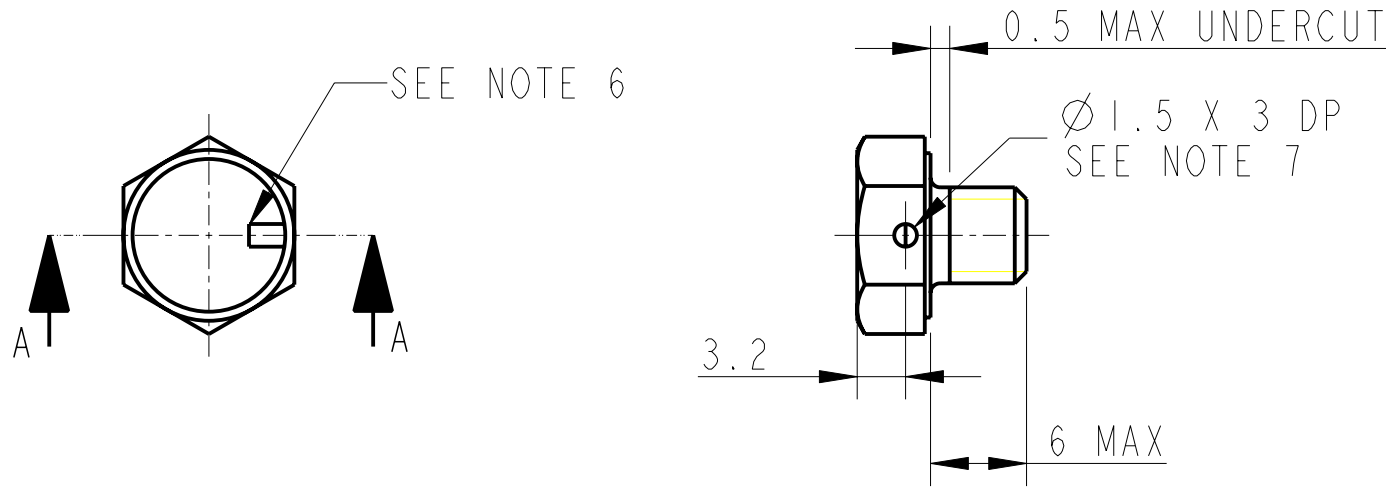


REV.	DATE	DCN #	DRAWING TREE #
A	19/OCT/06.	E060248	.
B	17/DEC/07	E060248-B	.
H	15/JULY/08	E080368	

ADDITIONAL NOTES:

5. START WITH A 1/4-20 UNC HEX HEAD BOLT
6. HOLE CAN BE EITHER FLAT BOTTEMED OR TO DRILL POINT
7. DRILL THROUGH BOLT AXIS IF PREFERRED



SECTION A-A

NOTES: (UNLESS OTHERWISE SPECIFIED)		CALIFORNIA INSTITUTE OF TECHNOLOGY MASSACHUSETTS INSTITUTE OF TECHNOLOGY IGR, GLASGOW UNIVERSITY GEO 600 GROUP RUTHERFORD APPLETON LABORATORIES	
1. REMOVE ALL SHARP EDGES, R.02 MIN. 2. DO NOT SCALE FROM DRAWING. 3. ALL MACHINING FLUIDS SHALL BE WATER SOLUBLE AND FREE OF SULFUR, CHLORINE AND SILICONE, SUCH AS CINCINNATI MILACRON'S CIMTECH 410 (STAINLESS STEEL) 4. SCRIBE, ENGRAVE OR STAMP DRAWING PARTNUMBER ON NOTED SURFACE OF PART AND A THREE DIGIT SERIAL NUMBER. SERIAL NUMBERS START AT 001 FOR THE FIRST PART AND PROCEED CONSECUTIVELY. USE .07" HIGH CHARACTERS. EXAMPLE: D020188- 001. A VIBRATORY TOOL MAY BE USED.	DIMENSIONS ARE IN mm [INCHES] TOLERANCES:		SYSTEM aLIGO SUB-SYSTEM SUS NEXT ASSY TOP MASS QUAD PART NAME MAGNET RETAINER (MODIFIED 1/4-20 HEX HEAD SCREW)
	X.XX ±0.2 mm ANGULAR ±0.25 °		
	MATERIAL: STAINLESS STEEL 304/316		
	FINISH: CLEAN AND DEGREASED √μm [μin] Ra = 1.6		
	NAME	DATE	SIZE
	DRAWN I WILMUT	02/SEP/05	A
	CHECKED MB	15/MAR/10	DRG. NO.
	APPROVED JOD	15/MAR/10	D060418
		SCALE 2:1	PROJECTION:
		SHEET 1 OF 1	