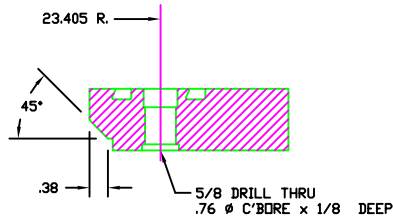
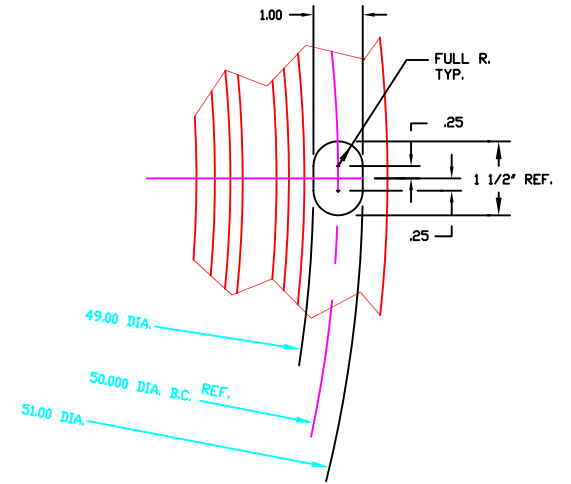
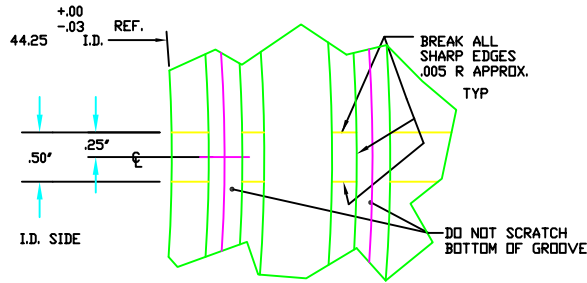


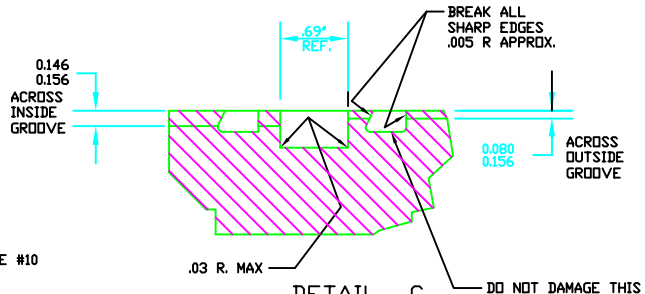
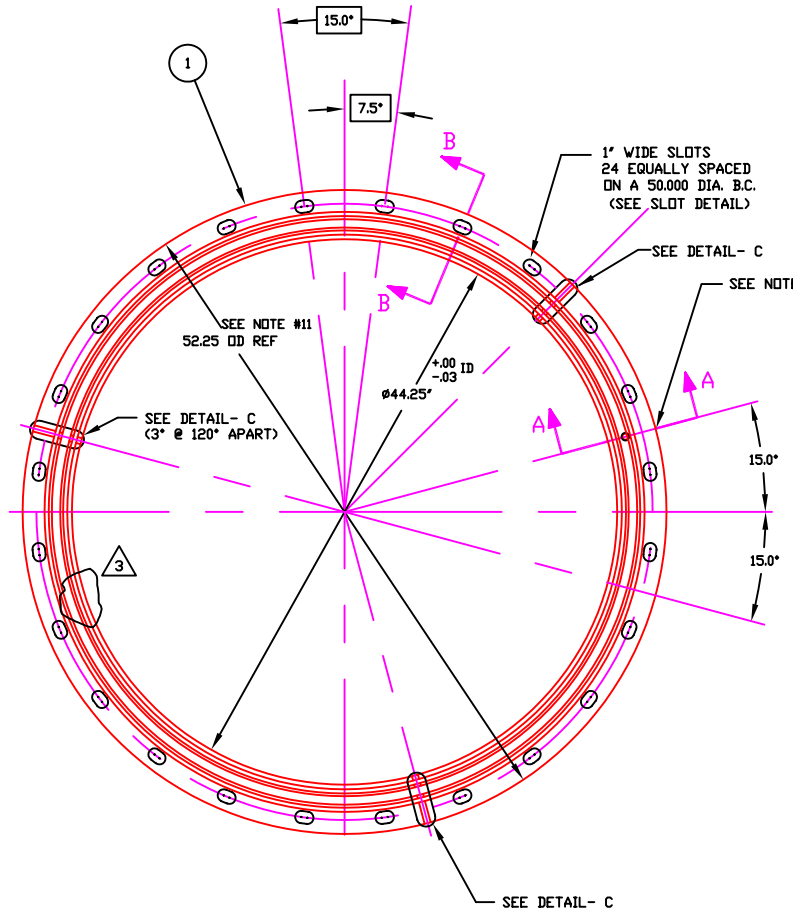
44.25 INCH FLANGE_GROOVED_SLOTTED - ADVANCED LIGO # LIGO D0900953-v1



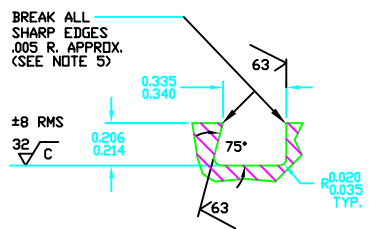
SECTION A - A



SLOT DETAIL

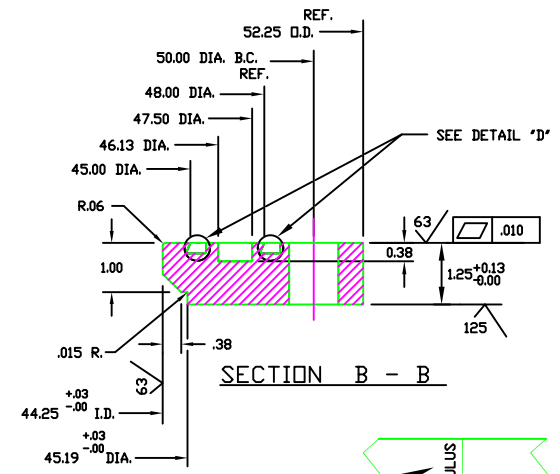


DETAIL C



DETAIL D

- NOTE:**
- 2: ALL MATERIAL TO BE 304L STAINLESS STEEL
 - 3: FLANGES MUST BE PACKAGED, HANDLED, AND SHIPPED IN SUCH A MANNER AS TO MAINTAIN SPECIFIED SURFACE FINISHES AND FLATNESS TOLERANCES.
 - 4: MACHINE TOOL LAY TO BE CONCENTRIC ON ALL SURFACES THAT REQUIRE A 32 RMS FINISH
 - 5: NO ABRASIVE STONES, CLOTHS OR GRINDING WHEELS MAY BE USED.
 - 6: NO OIL BASED OR HYDROCARBON BASED CUTTING FLUIDS TO BE USED.
 - 7: NO CARBON STEEL OR OTHER SOURCE OF IRON CONTAMINATION ARE TO COME IN CONTACT WITH FLANGES DURING MANUFACTURING OR HANDLING.
 - 8: FLANGE FINAL FACE CUTS AND O/RING GROOVES MUST BE MACHINED DURING THE SAME SETUP.
 - 9: STEAM CLEAN & WRAP IN POLYETHYLENE TO PREVENT CONTAMINATION DURING SHIPPING.



SECTION B - B

- 10: SCRIBE OUTER EDGE OF FLANGE WITH SCRIBE LINE & METAL STAMP "ANNULUS"
- 11: DO NOT MACHINE FLANGE O.D. ALL FORGING MANUFACT. NOS. TO BE LEFT INTACT.

THIS FLANGE TO BE MADE FROM P/N V049M244-1
WEIGHT: 215#

INNER O-RING .275 DIA. STOCK x 140 3/4" LG. VULCANIZED - BAKED VITON E-60C
OUTER O-RING .275 DIA. STOCK x 150" LG. VULCANIZED - BAKED VITON E-60C

| PROPRIETARY AND CONFIDENTIAL | | UNLESS OTHERWISE SPECIFIED | | | | | | | | | | | | |
|--------------------------------------------------------------------------------------------------------------------------------------------------------------------------------------------------------------------------------------------------------------------------------------------------------------------------------------------------------------------------------------------------------------------------------------------------------------------------------------------------------------------------|-------------|----------------------------|------|-------------|--------------------------|------|-------|------|-----|-------|----------|-------|----------|------|
| THIS DOCUMENT CONTAINS PROPRIETARY INFORMATION BELONGING TO PROCESS SYSTEMS INTERNATIONAL, INC. OR ITS AFFILIATED COMPANIES AND SHALL BE USED ONLY FOR THE PURPOSES FOR WHICH IT WAS SUPPLIED. IT SHALL NOT BE COPIED, REPRODUCED OR OTHERWISE USED, NOR SHALL SUCH INFORMATION BE FURNISHED IN WHOLE OR IN PART TO OTHERS EXCEPT IN ACCORDANCE WITH THE TERMS OF ANY AGREEMENT UNDER WHICH IT WAS SUPPLIED OR WITH THE PRIOR WRITTEN CONSENT OF PROCESS SYSTEMS INTERNATIONAL, INC. AND SHALL BE RETURNED UPON REQUEST. | | DIMENSIONS ARE IN INCHES | | | | | | | | | | | | |
| DWG. NO. | DESCRIPTION | USED ON | REV. | DESCRIPTION | ISSUE DESCRIPTION | CHKD | DRAWN | DATE | DED | SCALE | REGEN | SHEET | 1 OF 1 | |
| | | | | 4 | REISSUED FOR FABRICATION | | | | | PV | 11/26/96 | 0368 | | |
| | | | | 3 | REISSUED FOR FABRICATION | DMW | GS | PEF | RDC | REB | REC | PV | 10/21/96 | 0314 |
| | | | | 2 | REISSUED FOR FABRICATION | DMW | | PEF | RDC | REB | REC | DA | 10/8/96 | 0294 |
| | | | | 1 | RELEASED FOR FABRICATION | DMW | GS | PEF | RDC | REC | SPIDER | PV | 7/31/96 | 0218 |
| | | | | 0 | ISSUED FOR FDR | | | | RDC | DMW | REC | DA | 4/30/96 | 0150 |

PROCESS SYSTEMS INTERNATIONAL, INC.
30 WALKUP DR. WESTBOROUGH, MASSACHUSETTS 01581 USA

44.25" I.D. GROOVED AND SLOTTED FLG @ 44" GATE VLV LIGO VACUUM EQUIPMENT

CAD FILE: V0494060
SIZE: C
DWG. NO.: V049-4-060
REV.: 4

Dec 02, 1995 - 093521