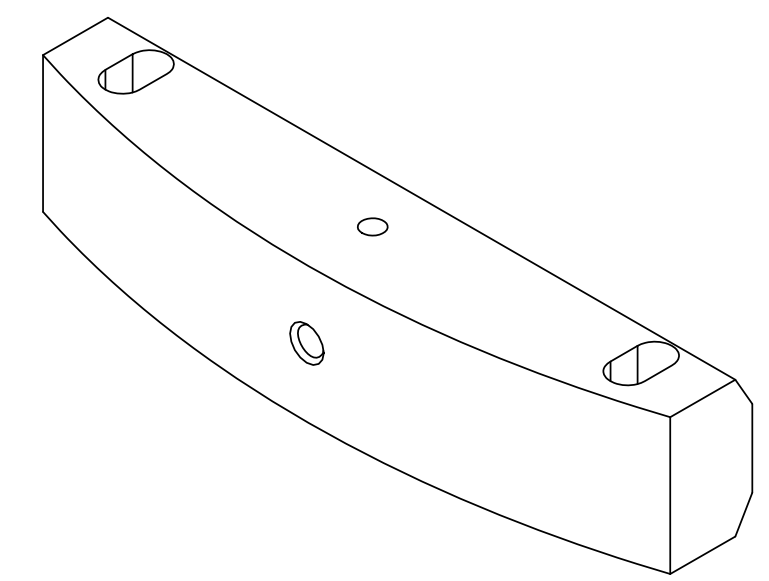
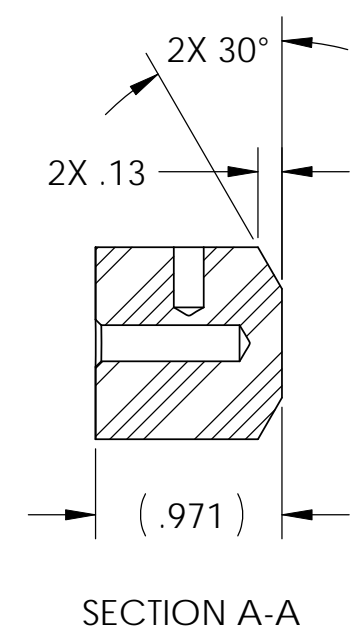
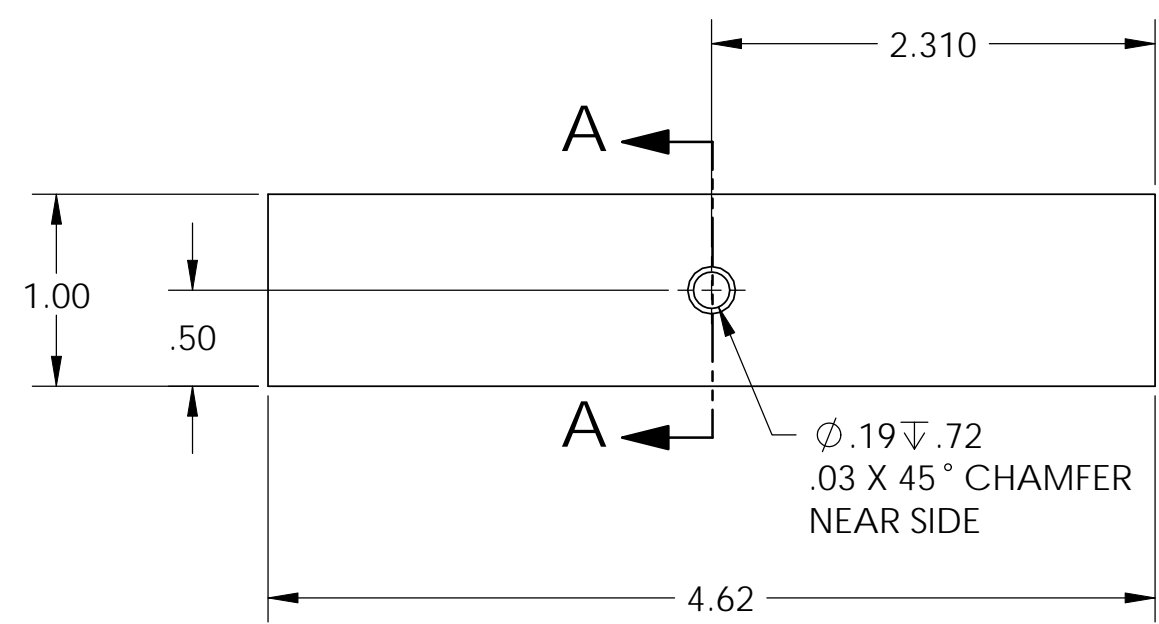
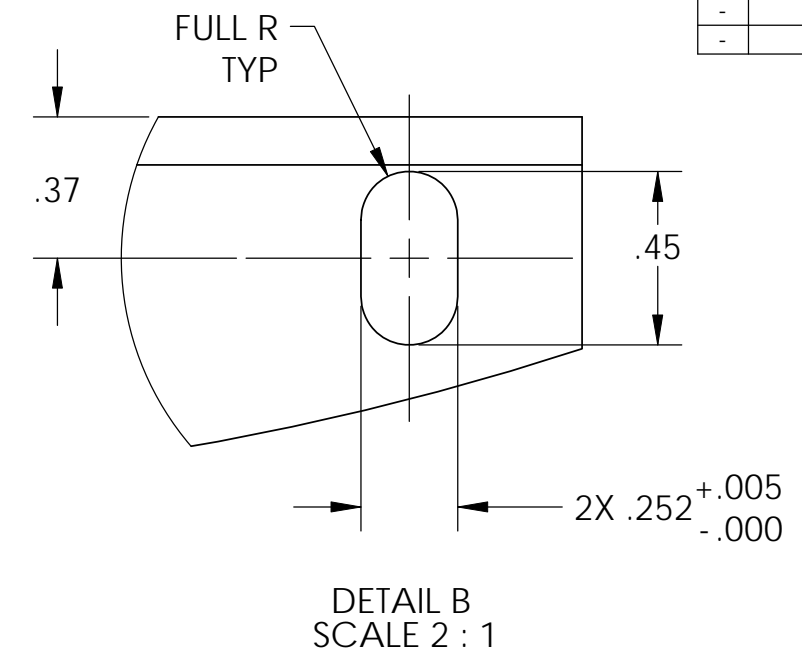
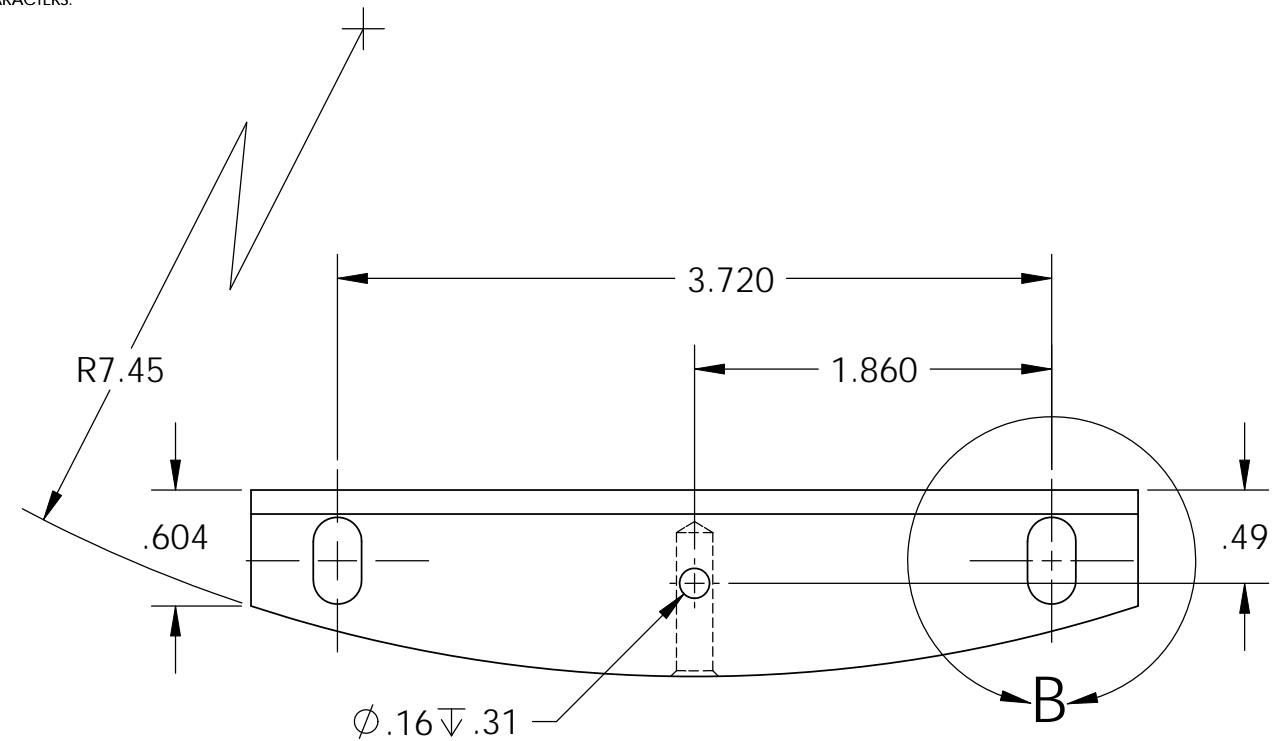


NOTES CONTINUED:
 ⑤ SCRIBE, ENGRAVE, OR MECHANICALLY STAMP (NO INKS OR DYES) DRAWING PART NUMBER AND REVISION ON NOTED SURFACE FOLLOWED ON THE NEXT LINE BY A THREE DIGIT SERIAL NUMBER. SERIAL NUMBERS START AT 001 FOR THE FIRST ARTICLE AND PROCEED CONSECUTIVELY. USE .07" HIGH CHARACTERS. EXAMPLE: DXXXXXX-VY, S/N 001. A VIBRATORY TOOL MAY BE USED.

REV.	DATE	DCN #	DRAWING TREE #
-	-	REFER TO E0900200-v1	-
-	-	-	-
-	-	-	-



NOTES AND TOLERANCES: (UNLESS OTHERWISE SPECIFIED)				PART NAME	
DIMENSIONS ARE IN INCHES		1. INTERPRET DRAWING PER ASME Y14.5-1994.		Block, Spring Loaded, Adjustable, ETM Optic Container	
TOLERANCES: .XX ± 0.01 .XXX ± 0.005		2. REMOVE ALL SHARP EDGES, R.02 MIN.		DESIGNER	ED CHAVEZ 18 JUN 2009
ANGULAR ± 0.5°		3. DO NOT SCALE FROM DRAWING.		DRAFTER	ED CHAVEZ 14 JUL 2009
		4. ALL MACHINING FLUIDS SHALL BE WATER SOLUBLE AND FREE OF SULFUR, CHLORINE AND SILICONE, SUCH AS CINCINNATI MILACRON'S CIMTECH 410.		CHECKER	REFER TO E0900200-v1
		MATERIAL	PFA 440 HP	APPROVAL	REFER TO E0900200-v1
		FINISH	32 μinch	SCALE:	1:1
		SYSTEM	ADVANCED LIGO	PROJECTION:	ASME
		SUB-SYSTEM	COC	SHEET	1 OF 1
		NEXT ASSY	ETM Optic Container	DWG. NO.	D0901316
				REV.	v1

D0901316 Block, Spring Loaded Adjustable Mirror Stop, ETM, PART PDM REV: X-000, DRAWING PDM REV: X-001