

4

3

2

1

NOTES CONTINUED:

Ⓢ BAG ALL ITEMS INDIVIDUALLY AND MARK OR TAG EACH BAG WITH DRAWING NUMBER, REVISION, AND QUANTITY. EXAMPLE: DXXXXXX-VY, QTY: 1

		DCN #	DRAWING TREE #
	07-29-2009	E0900223-v1	

D

D

C

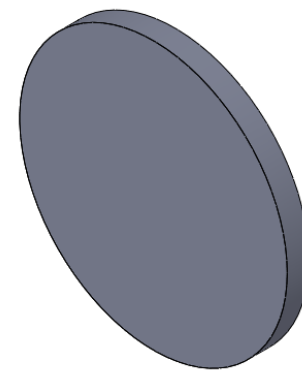
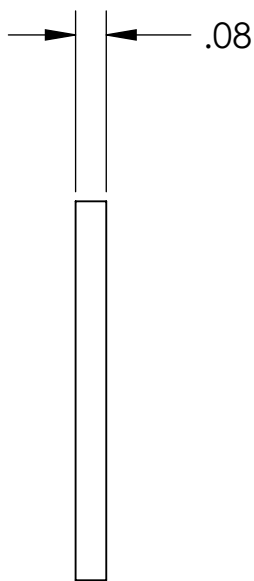
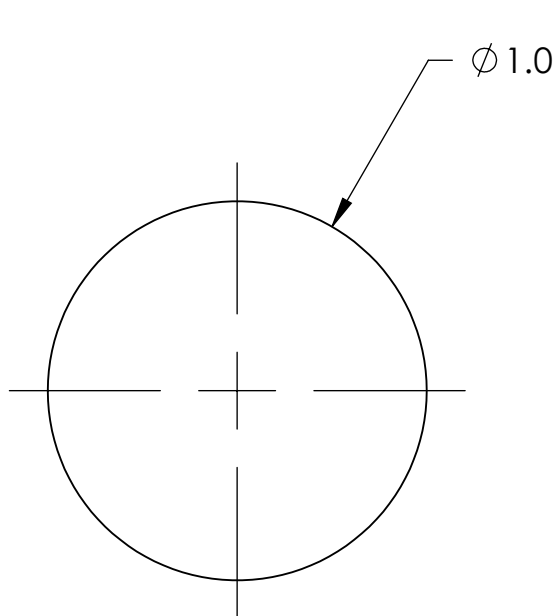
C

B

B

A

A



Zink Selenide (ZnSe)

NOTES AND TOLERANCES: (UNLESS OTHERWISE SPECIFIED)

DIMENSIONS ARE IN INCHES

TOLERANCES:

.XX ± .005
.XXX ± .005

ANGULAR ± °

1. INTERPRET DRAWING PER ASME Y14.5-1994.
2. REMOVE ALL SHARP EDGES, R.02 MIN.
3. DO NOT SCALE FROM DRAWING.
4. ALL MACHINING FLUIDS SHALL BE WATER SOLUBLE AND FREE OF SULFUR, CHLORINE AND SILICONE, SUCH AS CINCINNATI MILACRON'S CIMTECH 410.

MATERIAL [LASER RESEARCH OPTICS]
MELLER OPTIC W-1008-Z-AR

FINISH



CALIFORNIA INSTITUTE OF TECHNOLOGY
MASSACHUSETTS INSTITUTE OF TECHNOLOGY

SYSTEM
ADVANCED LIGO

SUB-SYSTEM

NEXT ASSY
D0901417

PART NAME

ADLIGO_TCS_LASER_ENCLOSURE_W1008-Z-AR_WINDOW

DESIGNER KMAILAND 07-17-2009

DRAFTER KMAILAND 07-17-2009

CHECKER

APPROVAL

DWG. NO.

A D0901453

v1

SCALE:

PROJECTION:



SHEET 1 OF 1