



Pacific Northwest Laboratories
Battelle Boulevard
P.O. Box 999
Richland, Washington 99352

FACSIMILE: (509) 372-6089

L160-C960049-00-

DATE: January 5, 1996

TO: Lisa Sievers/Fred Asiri FROM: Alan Rohay

COMPANY: L160/Caltech PHONE: (509) 372-6072

PHONE: 818 395-8437 or 395-2971

CITY/STATE: Pasadena

FACSIMILE NO: 818 304-9834

VERIFICATION: ()

EARTH AND ENVIRONMENTAL SCIENCES CENTER
3200 Q Avenue
P.O. BOX 999
RICHLAND, WA 99352

COMMENTS:

Corner Site

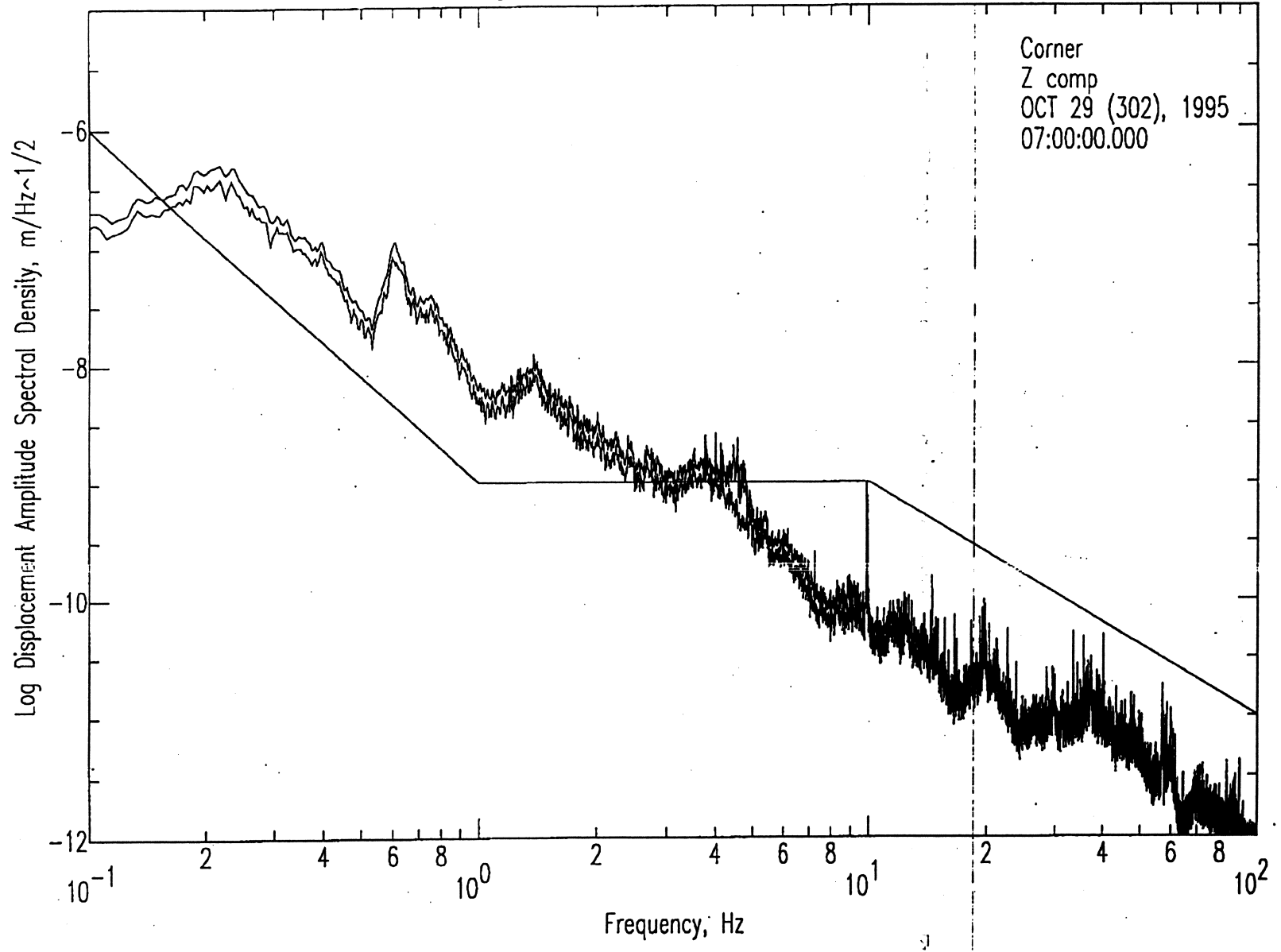
Lisa, Fred
Spectra are for 1 hour each, computed like the Hanford report. All three components are shown:

<i>GMT</i>	<i>Local Standard Time</i>	<i>Effect</i>
<i>Oct 29:0700</i>	<i>Sunday 1 AM</i>	<i>night</i>
<i>Oct 29:2200</i>	<i>Sunday 4 PM</i>	<i>weekend evening</i>
<i>Oct 30:0200</i>	<i>Sunday 8 PM</i>	<i>train (every day at 8 & 10 PM)</i>
<i>Oct 30:0700</i>	<i>Monday 1 AM</i>	<i>night</i>
<i>Oct 30:2200</i>	<i>Monday 4 PM</i>	<i>weekday evening (traffic?)</i>

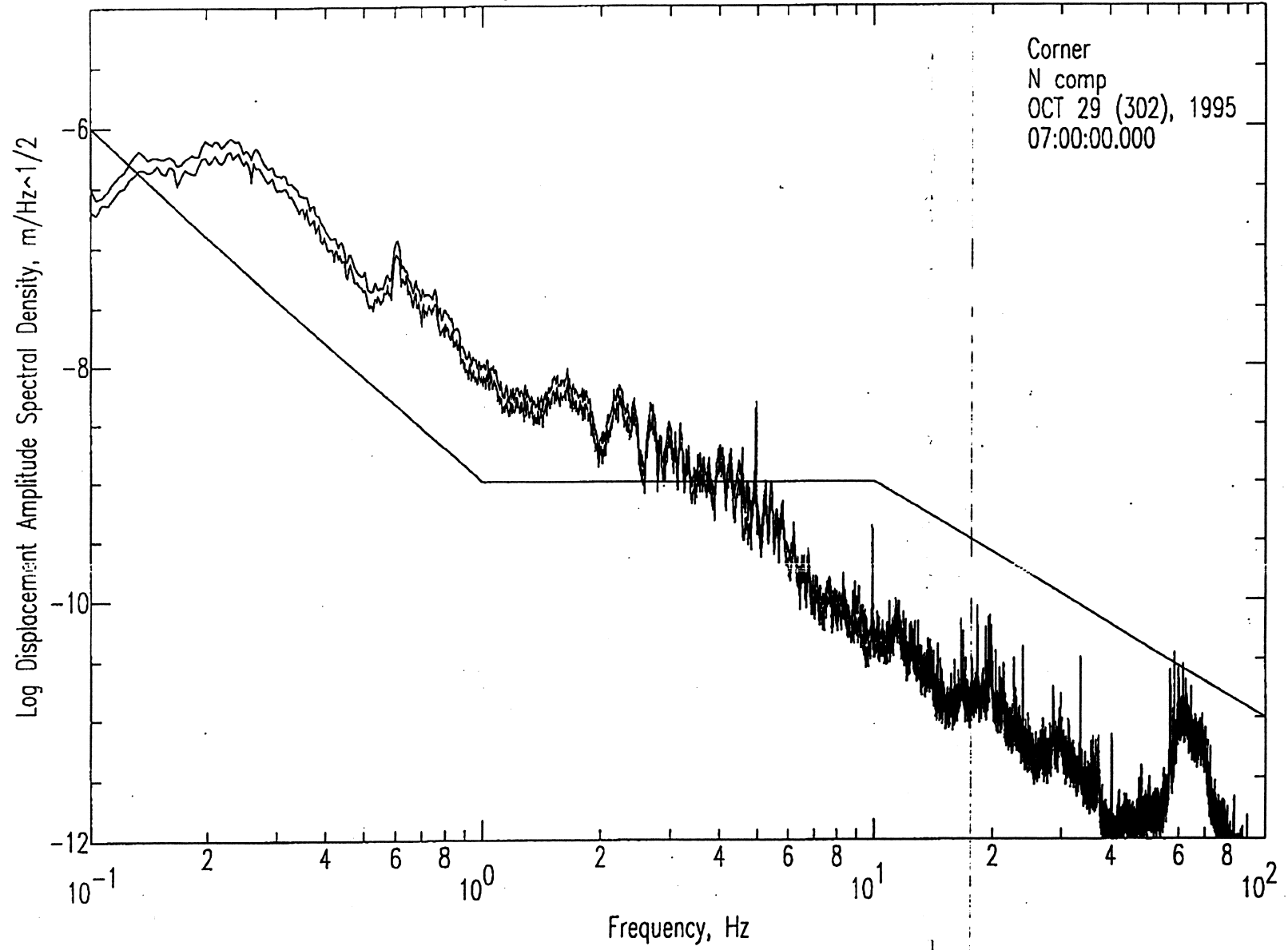
THIS TRANSMISSION CONSISTS OF 15 PAGES EXCLUDING COVER PAGE.

Twenty-five years of science 25 for DOE and the Northwest

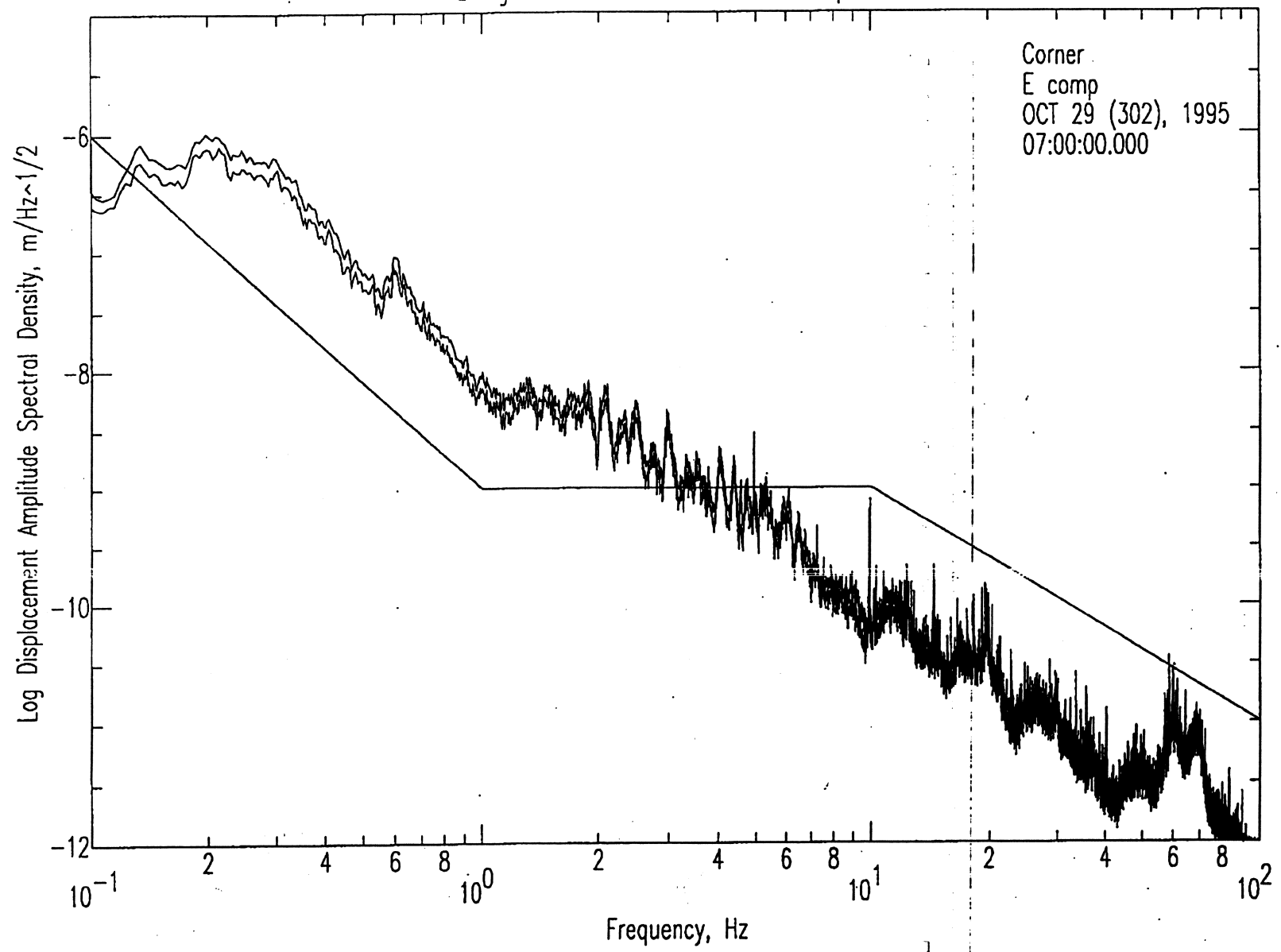
Livingston Corner: RMS and Median Spectra



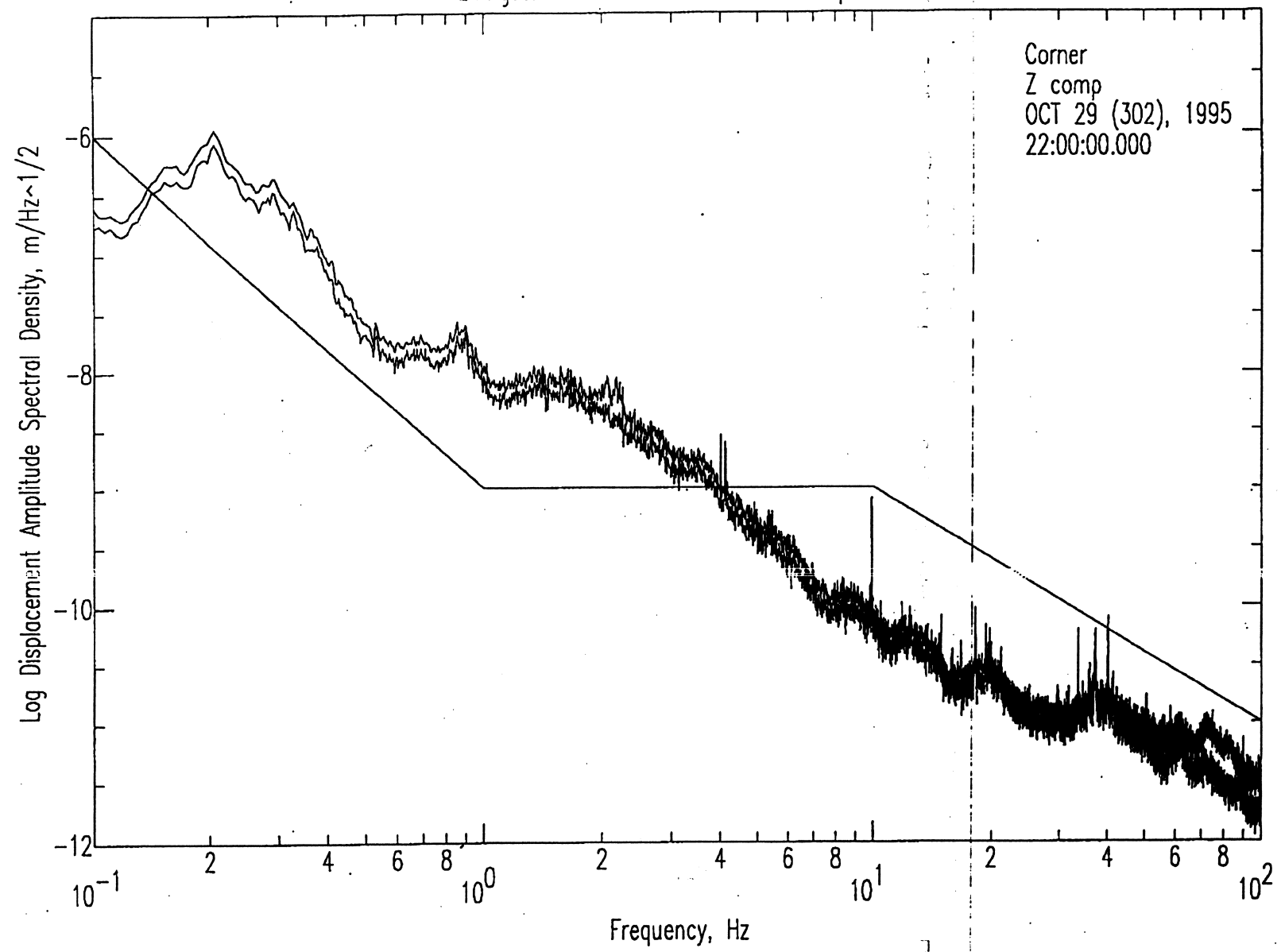
Livingston Corner: RMS and Median Spectra



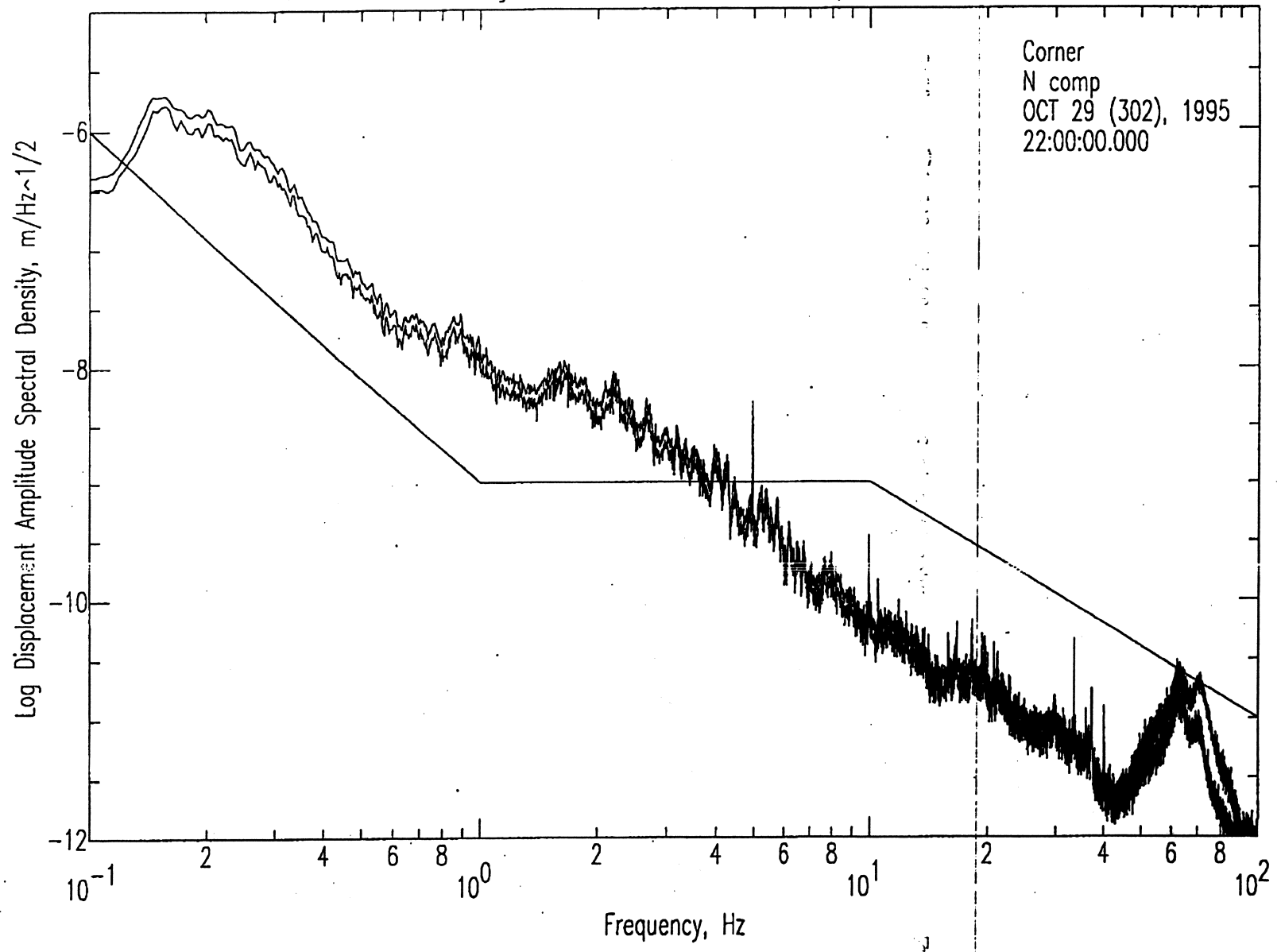
Livingston Corner: RMS and Median Spectra



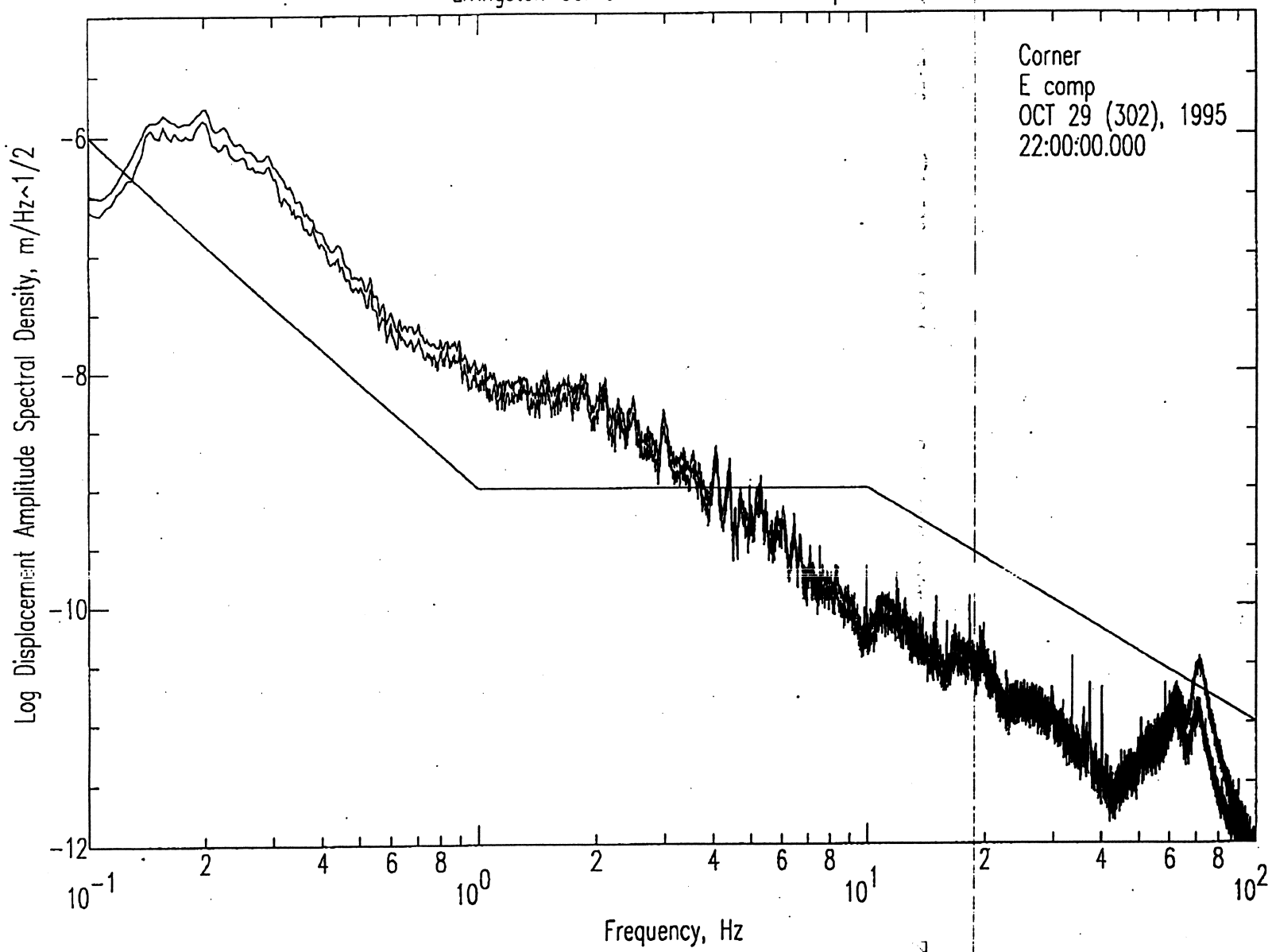
Livingston Corner: RMS and Median Spectra



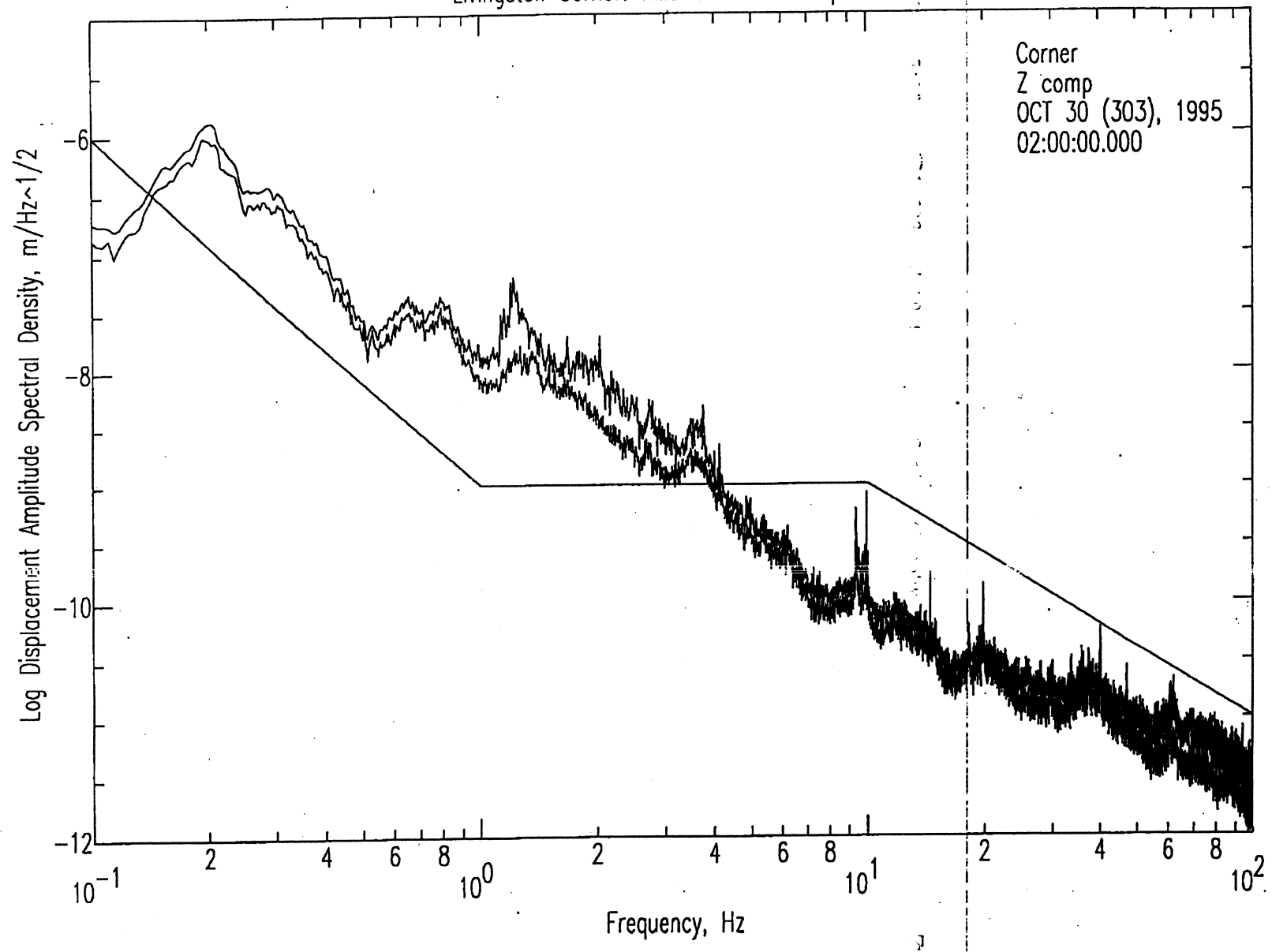
Livingston Corner: RMS and Median Spectra

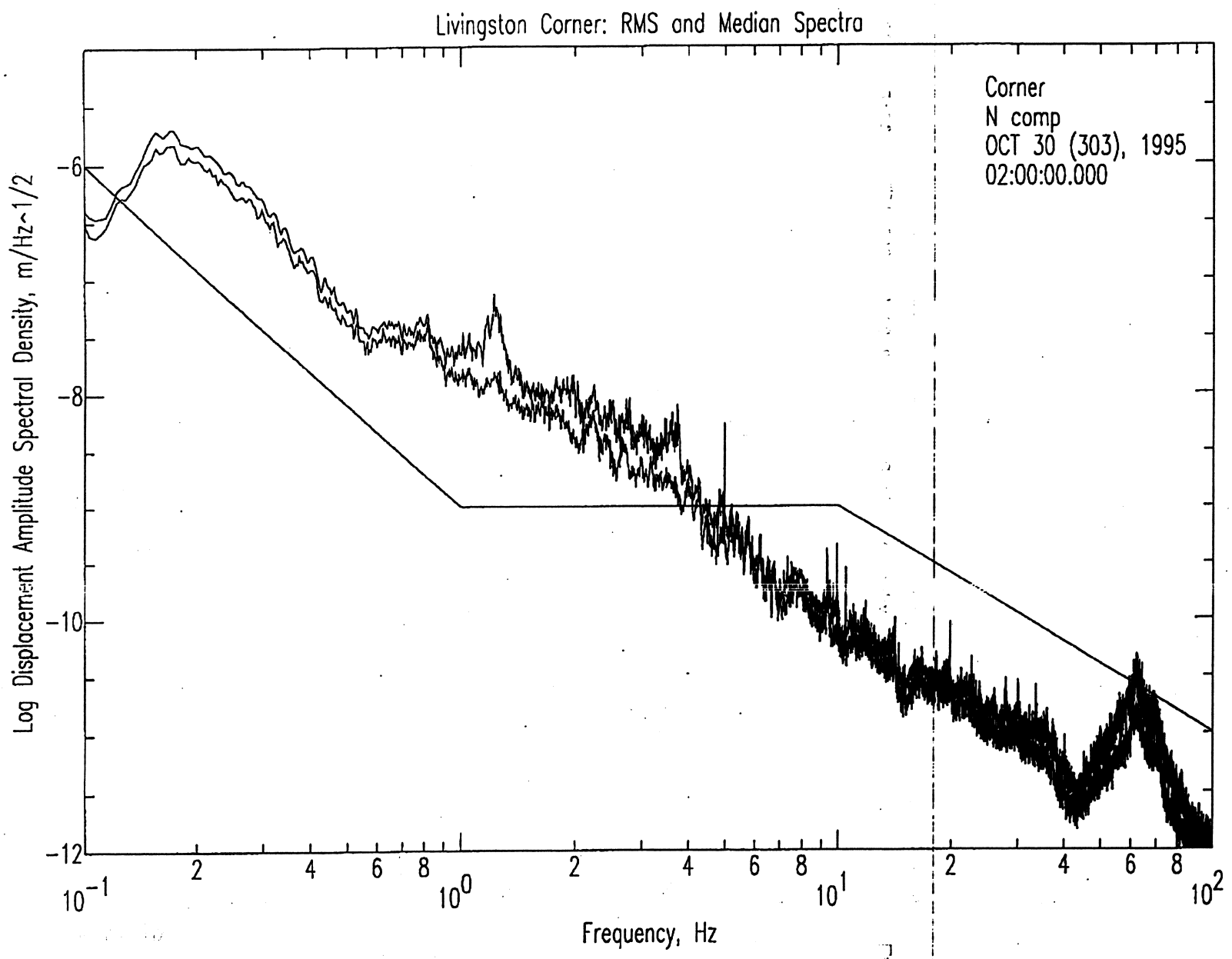


Livingston Corner: RMS and Median Spectra

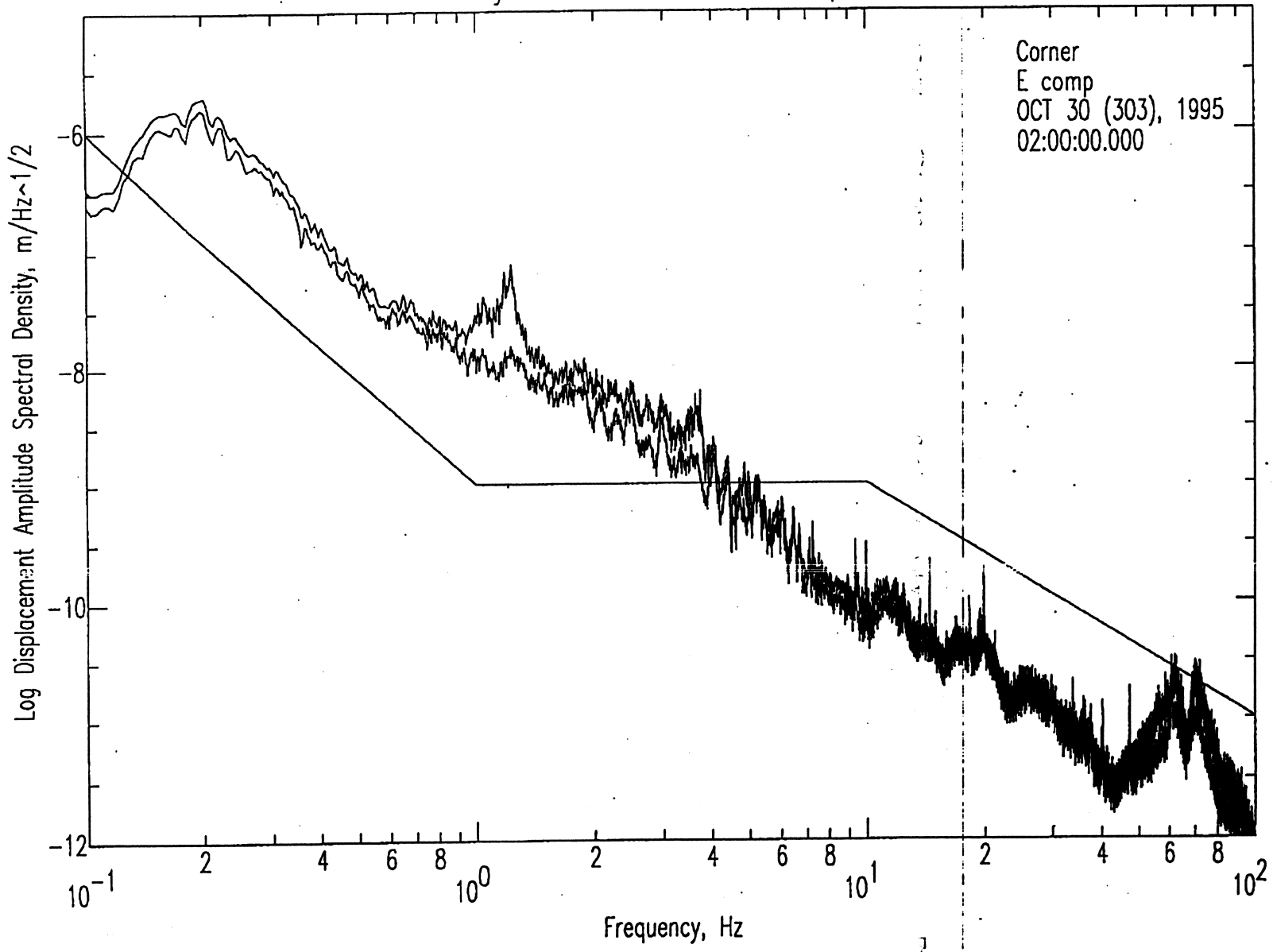


Livingston Corner: RMS and Median Spectra

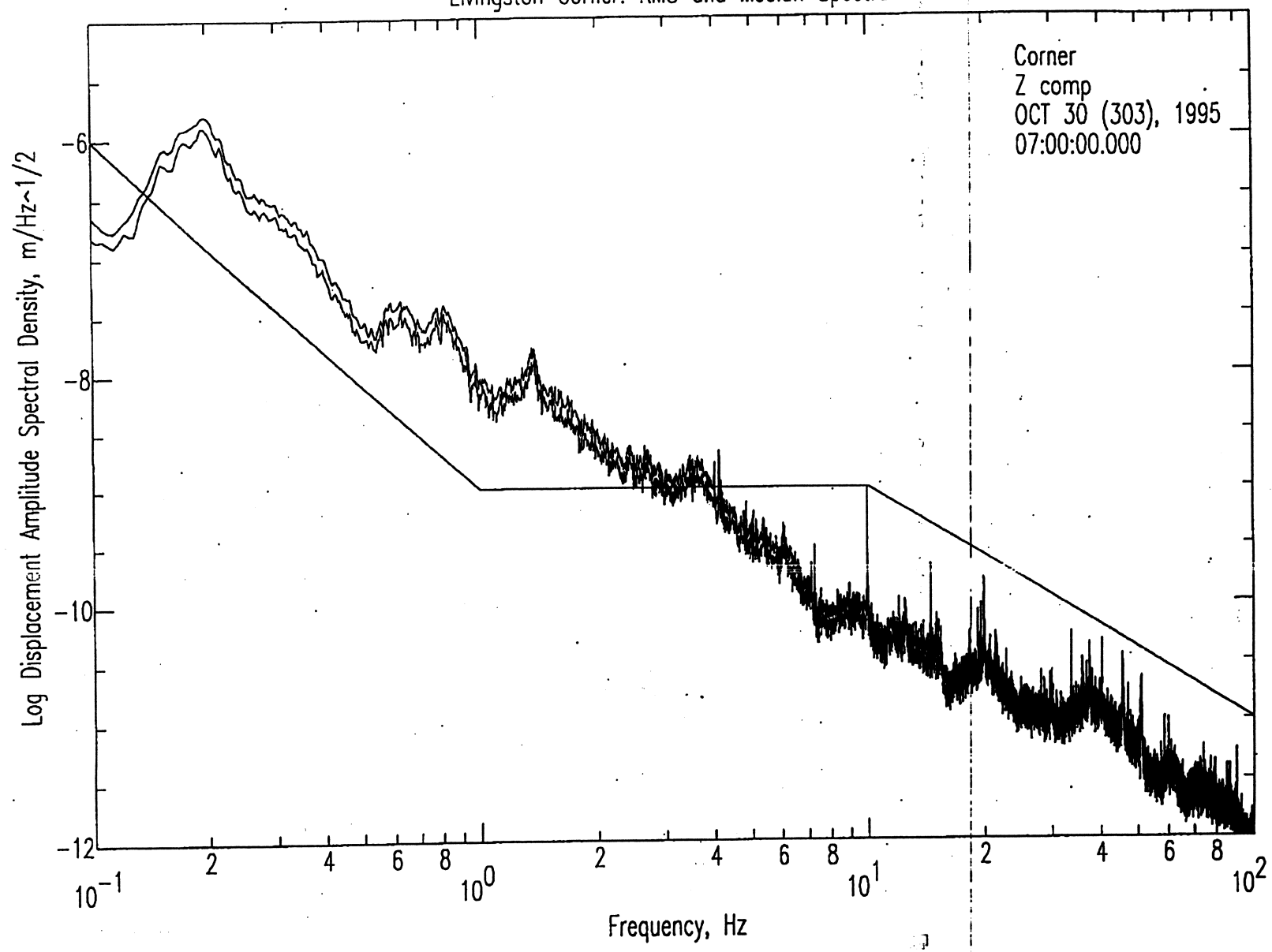




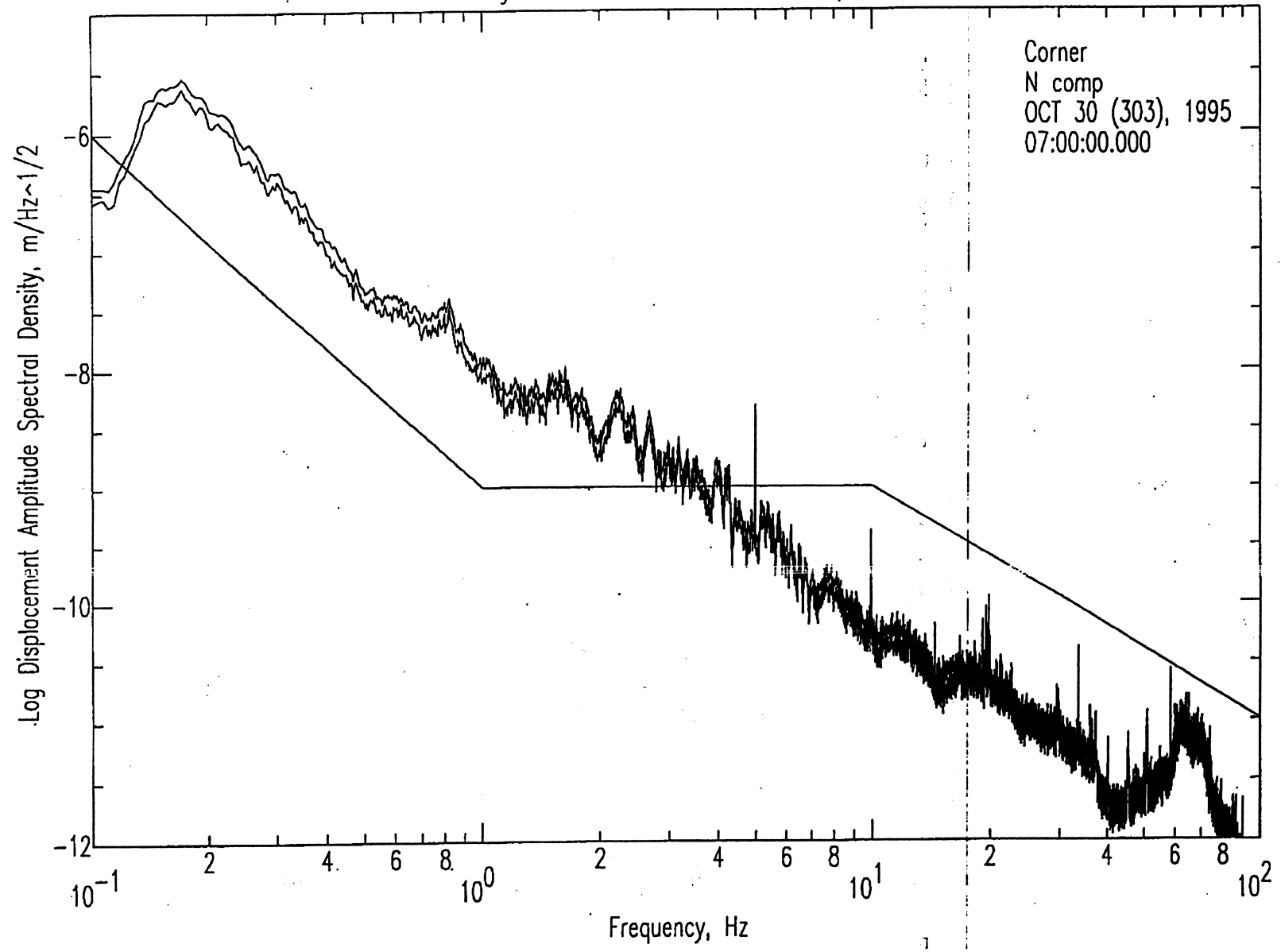
Livingston Corner: RMS and Median Spectra



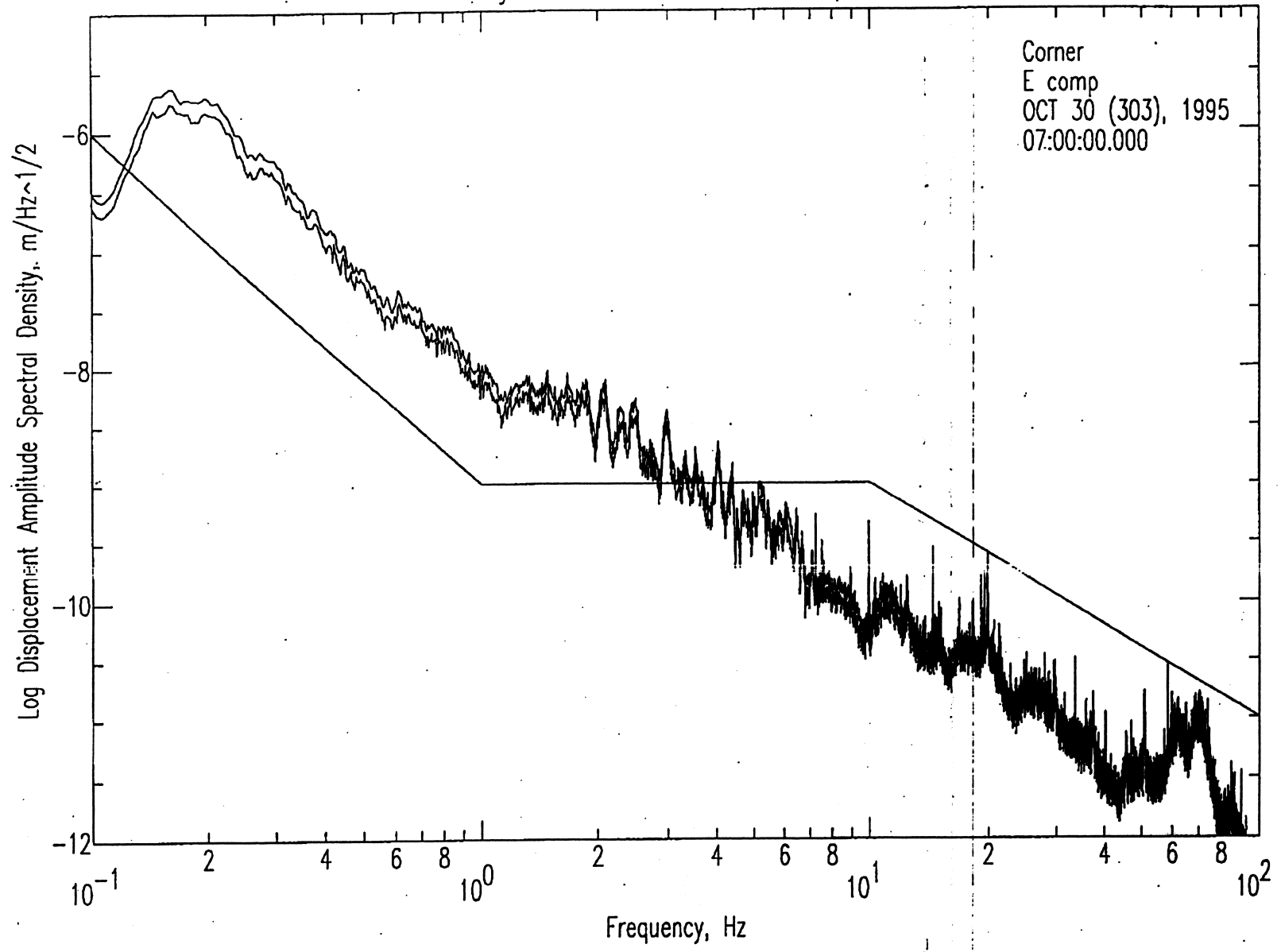
Livingston Corner: RMS and Median Spectra

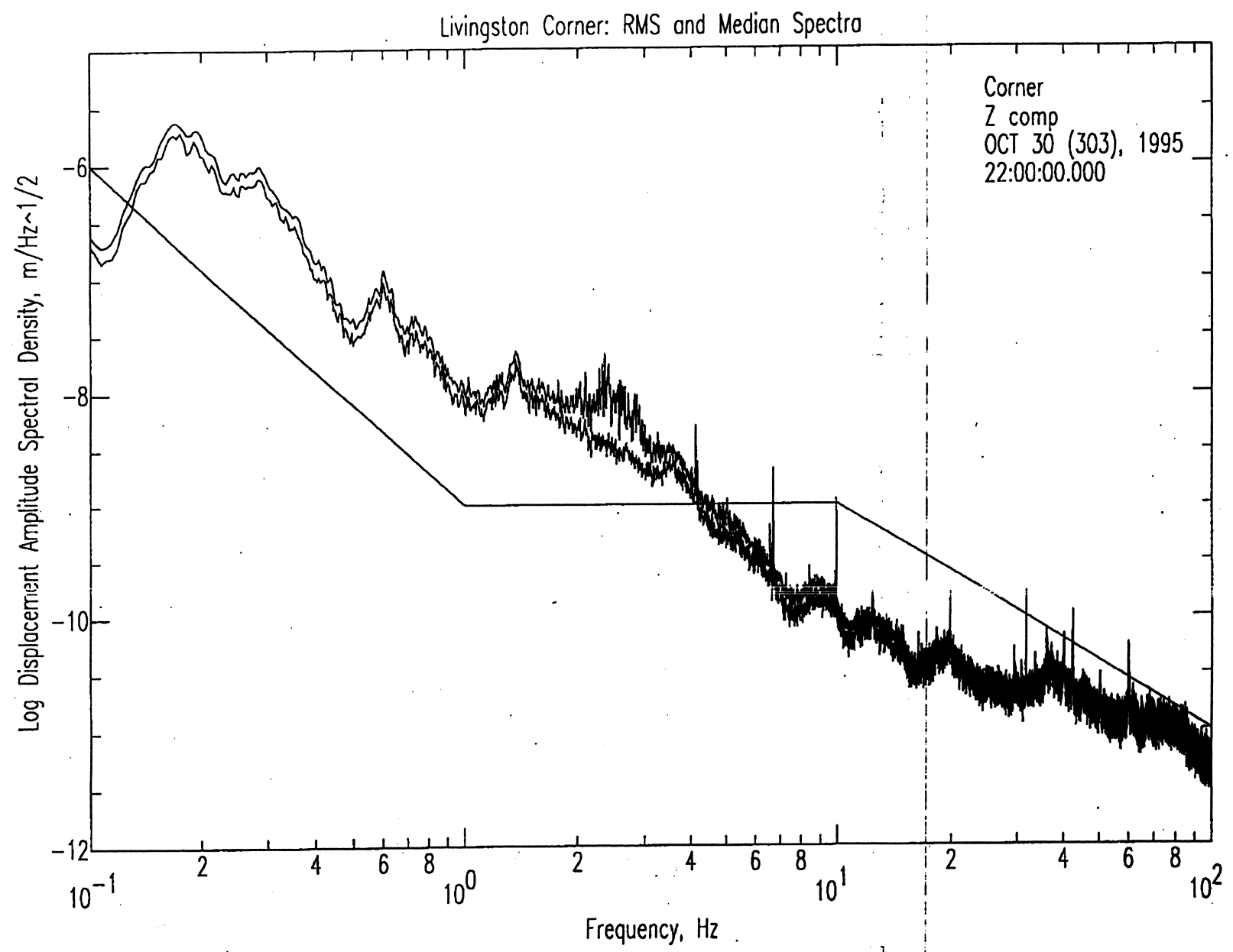


Livingston Corner: RMS and Median Spectra



Livingston Corner: RMS and Median Spectra





Livingston Corner: RMS and Median Spectra

