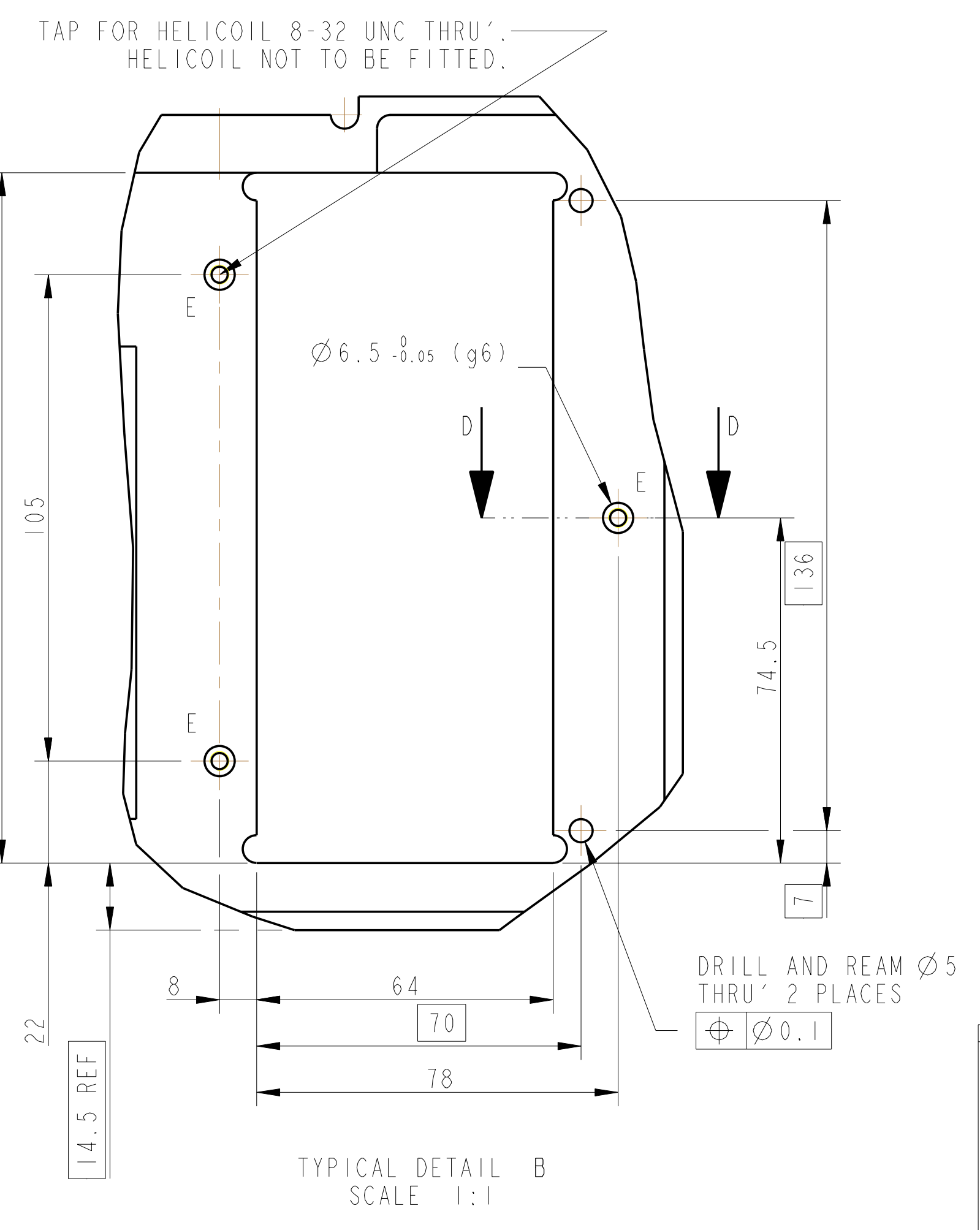
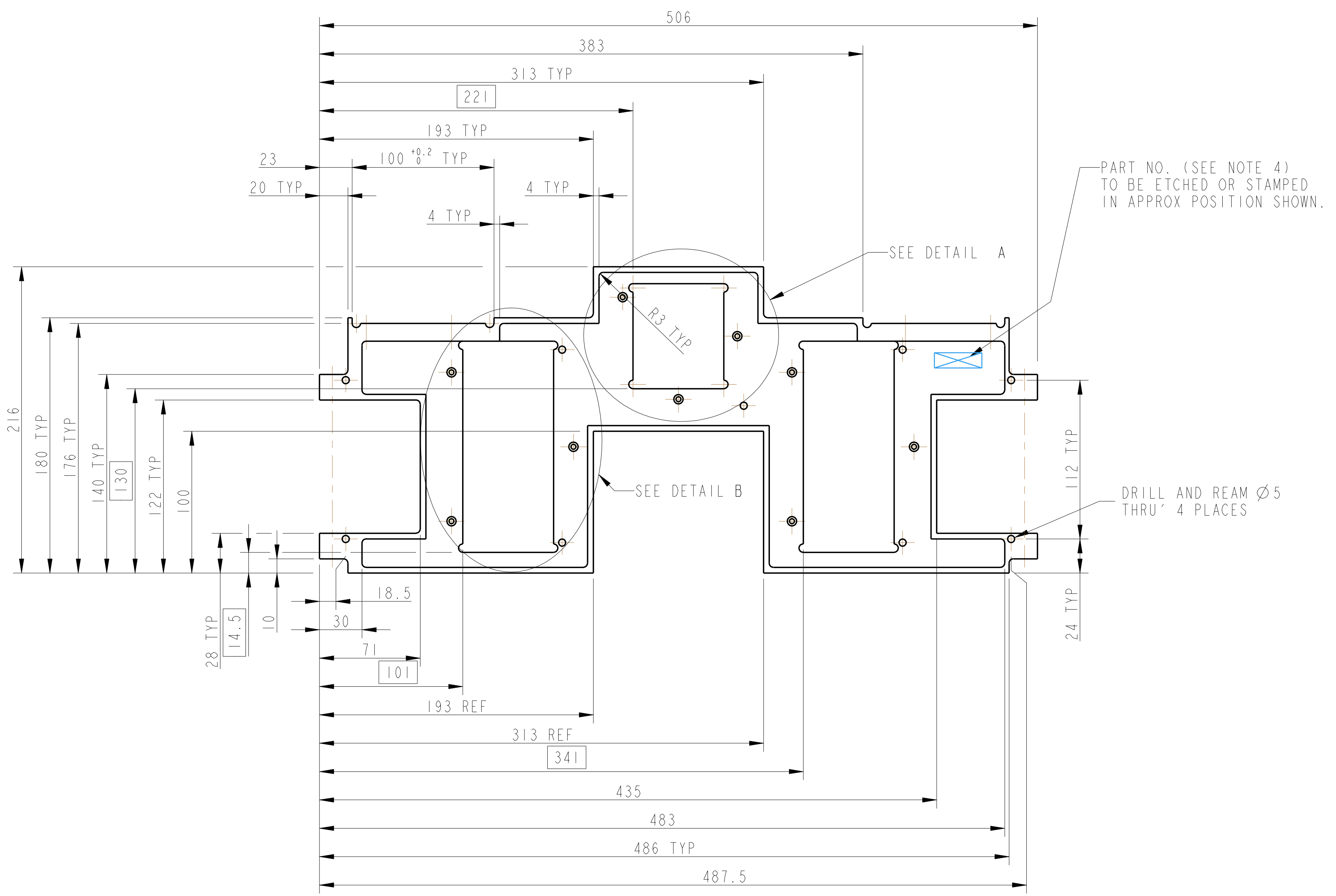
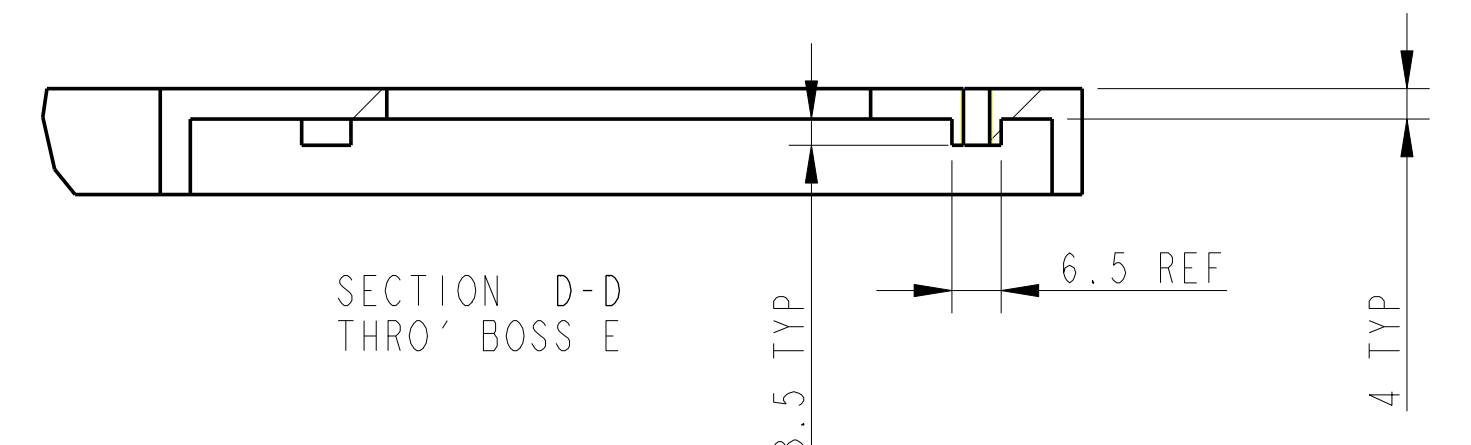
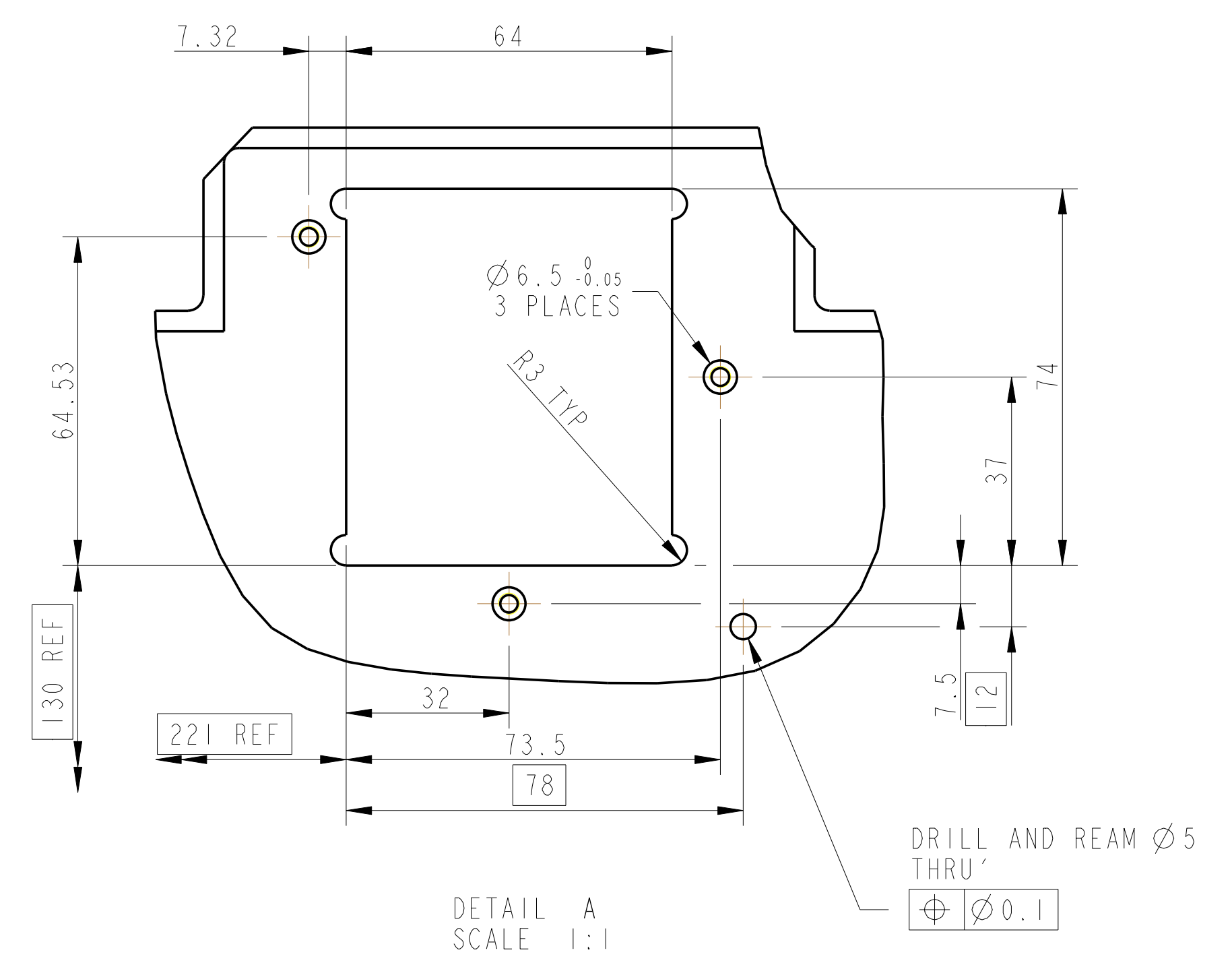
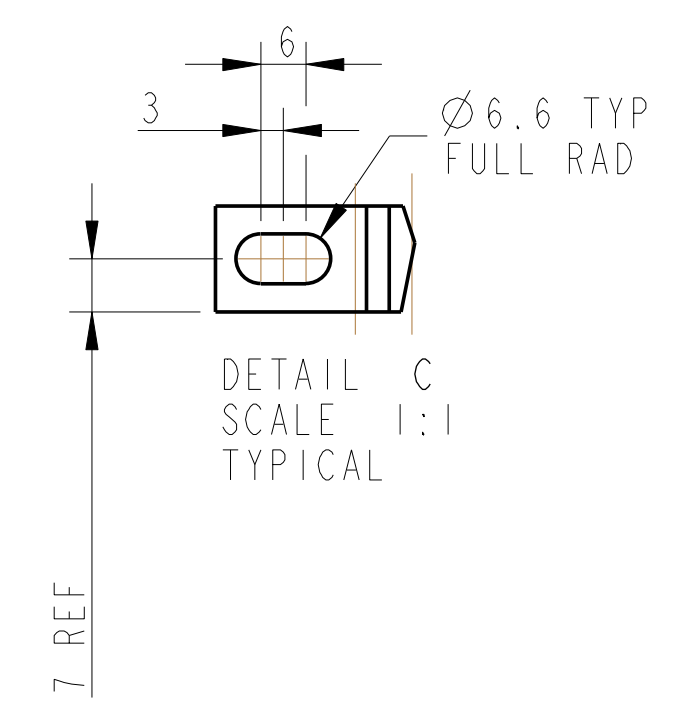
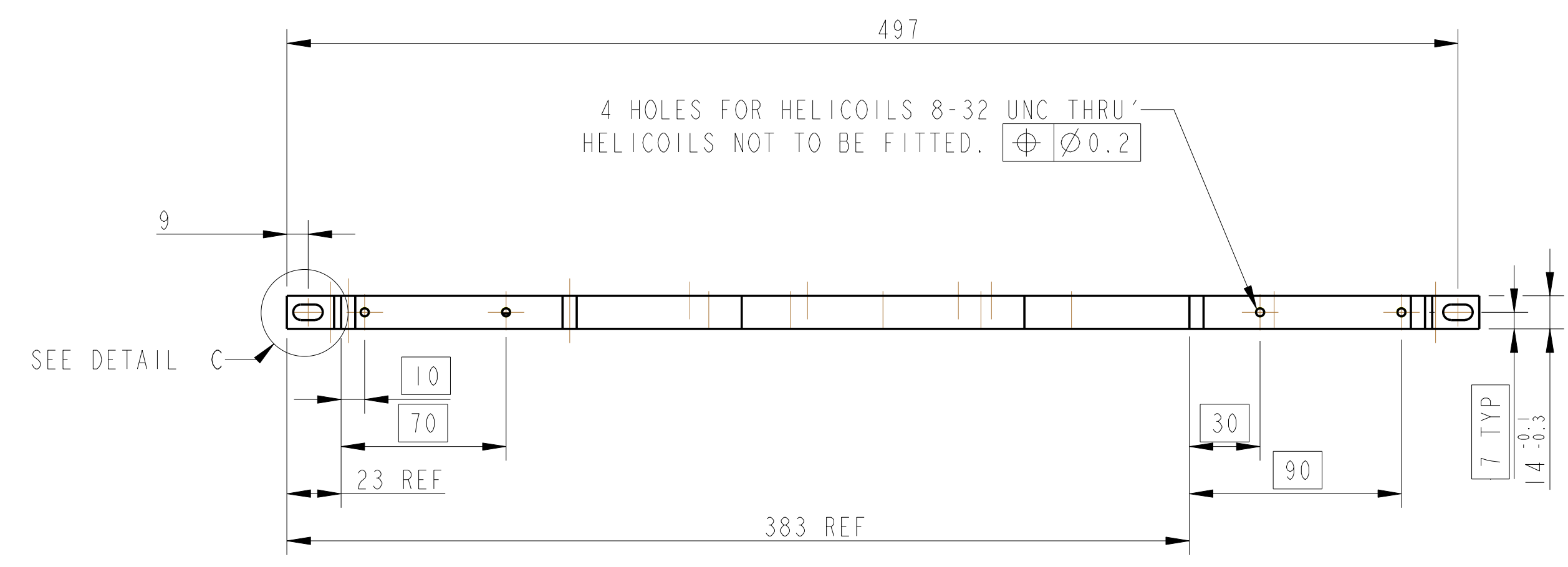


REV.	DATE	DCN #	DRAWING TREE #
A	13/OCT/06	E060239	
B	19/DEC/07	E060239-B	



NOTES: (UNLESS OTHERWISE SPECIFIED)

- REMOVE ALL SHARP EDGES. R.02 MIN.
- DO NOT SCALE FROM DRAWING.
- ALL MACHINING FLUIDS SHALL BE WATER SOLUBLE AND FREE OF SULFUR, CHLORINE AND SILICONE. SUCH AS CINCINNATI MILCORP'S CIMTECH 410 STAINLESS STEEL.
- SCRIBE ENGRAVE OR STAMP DRAWING PART NUMBER ON NOTED SURFACE OF PART AND A THREE DIGIT SERIAL NUMBER. SERIAL NUMBERS START AT 001 FOR THE FIRST PART AND PROCEED CONSECUTIVELY. USE 07* HIGH CHARACTERS. EXAMPLE: 000001-001. A VIBRATORY TOOL MAY BE USED.

DIMENSIONS ARE IN MM (INCHES)

TOLERANCES:

X, XX ± 0.2

ANGULAR $\pm 0.25^\circ$

MATERIAL: AL ALLOY 5083 H4

FINISH: CLEAN AND DEGREASE

\sqrt{Ra} 1.6

NAME: DATE:

DRAWN: J WILMOT 03/10/06

CHECKED: J OOD 04/SEP/06

APPROVED: LW 04/SEP/06

SCALE 1:21 PROJECTION: 4

CALIFORNIA INSTITUTE OF TECHNOLOGY
MASSACHUSETTS INSTITUTE OF TECHNOLOGY
DR. GLASSON UNIVERSITY GEO 800 GROUP
RUTHERFORD APPLTON LABORATORIES

SYSTEM: ADVANCED LIGO

SUB-SYSTEM: SUS

NEXT ASSY: QUAD N-TYPE TABLECLOTH

PART NAME: FRONT AND REAR PLATE

NOISE TABLECLOTH

DRG. NO.: D060311

SHEET 1 OF 1