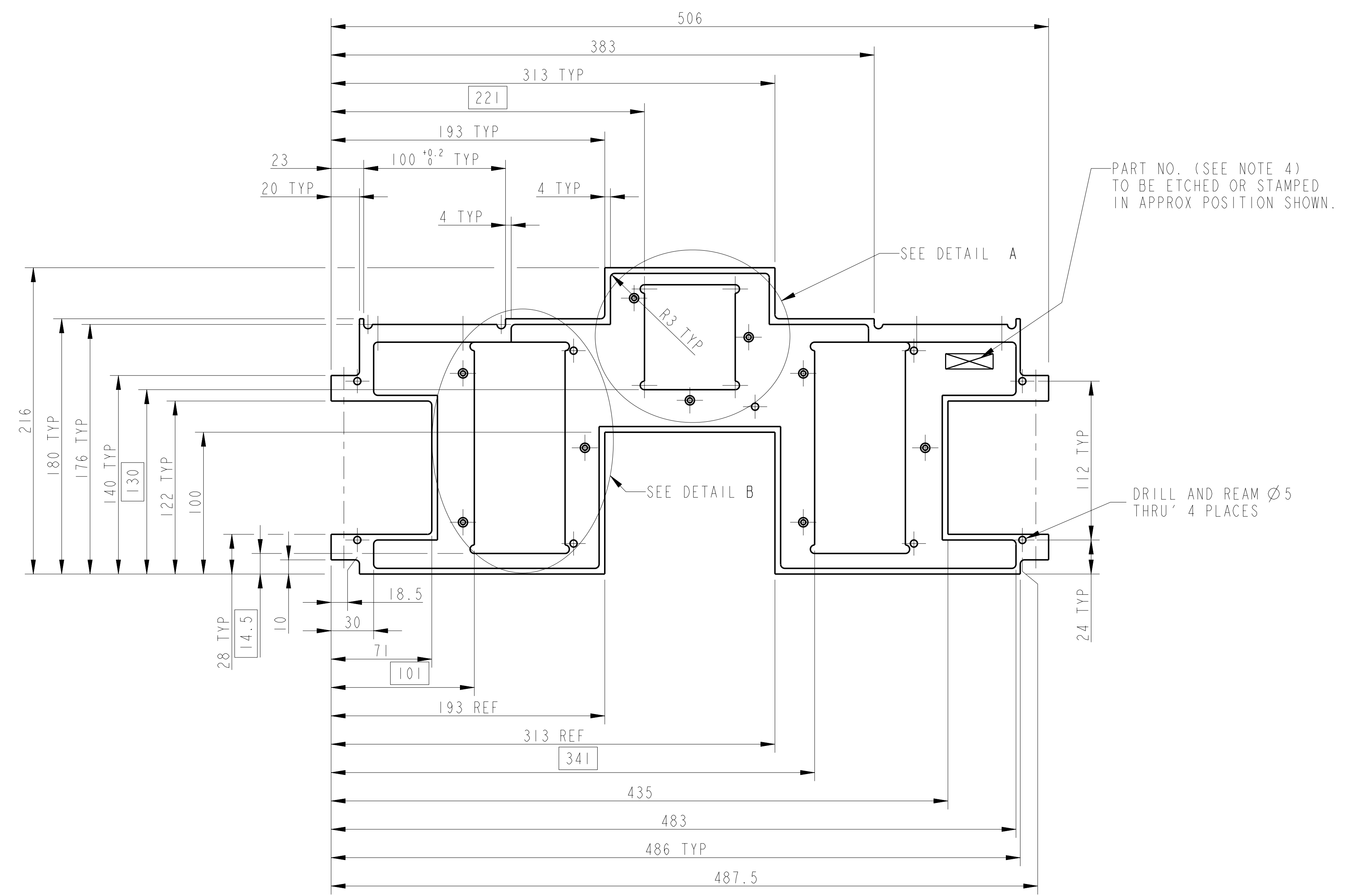
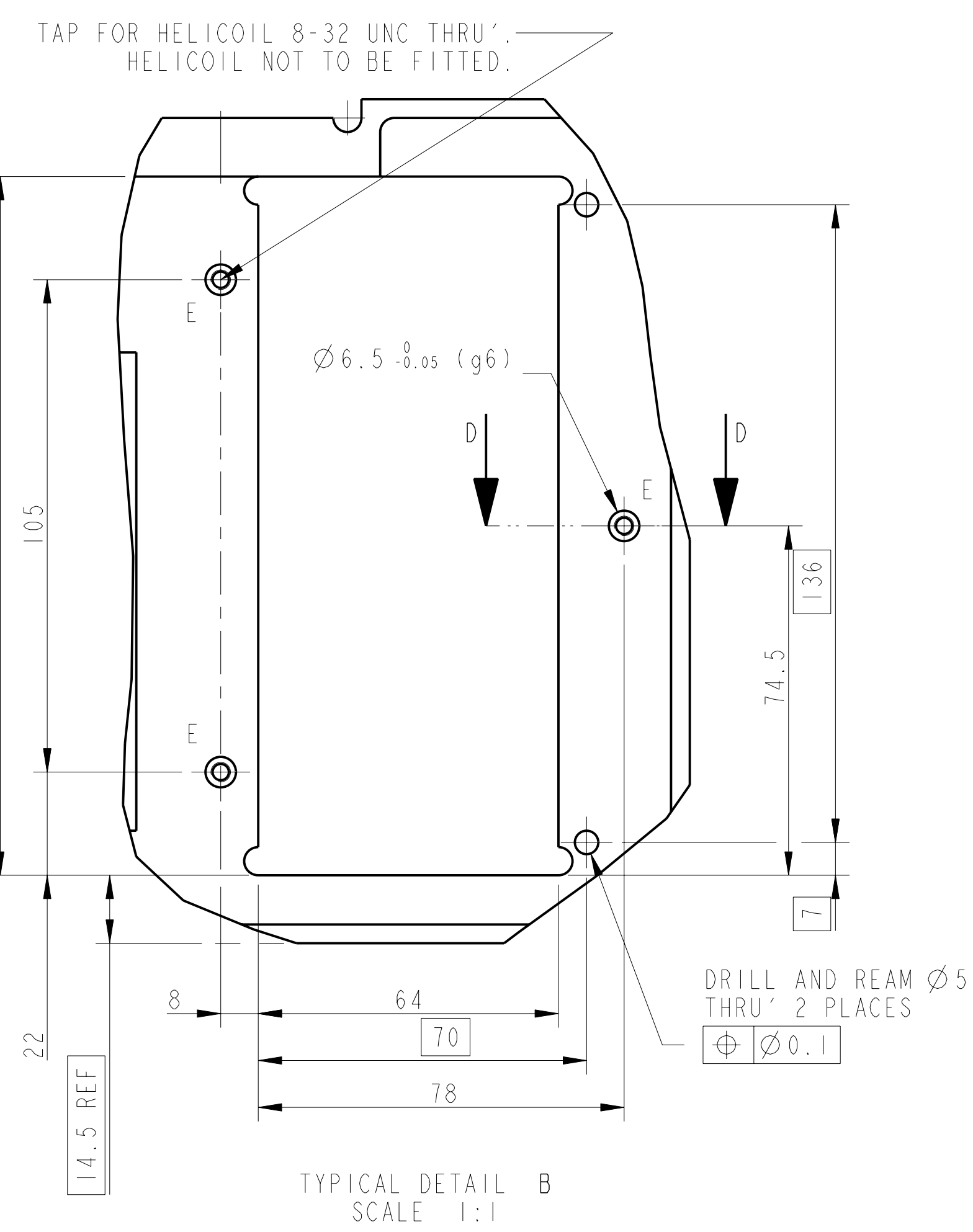
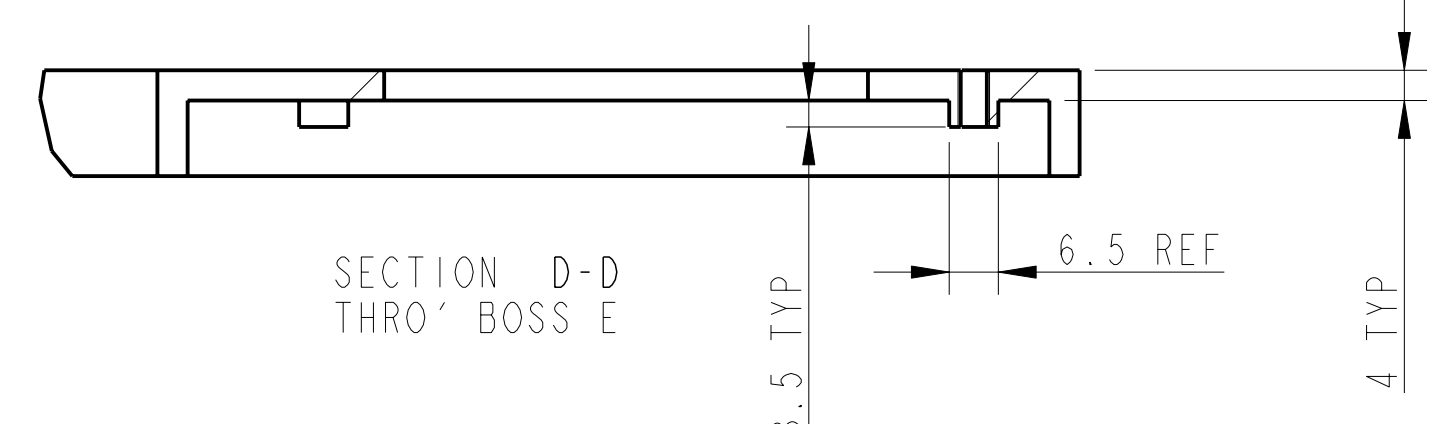
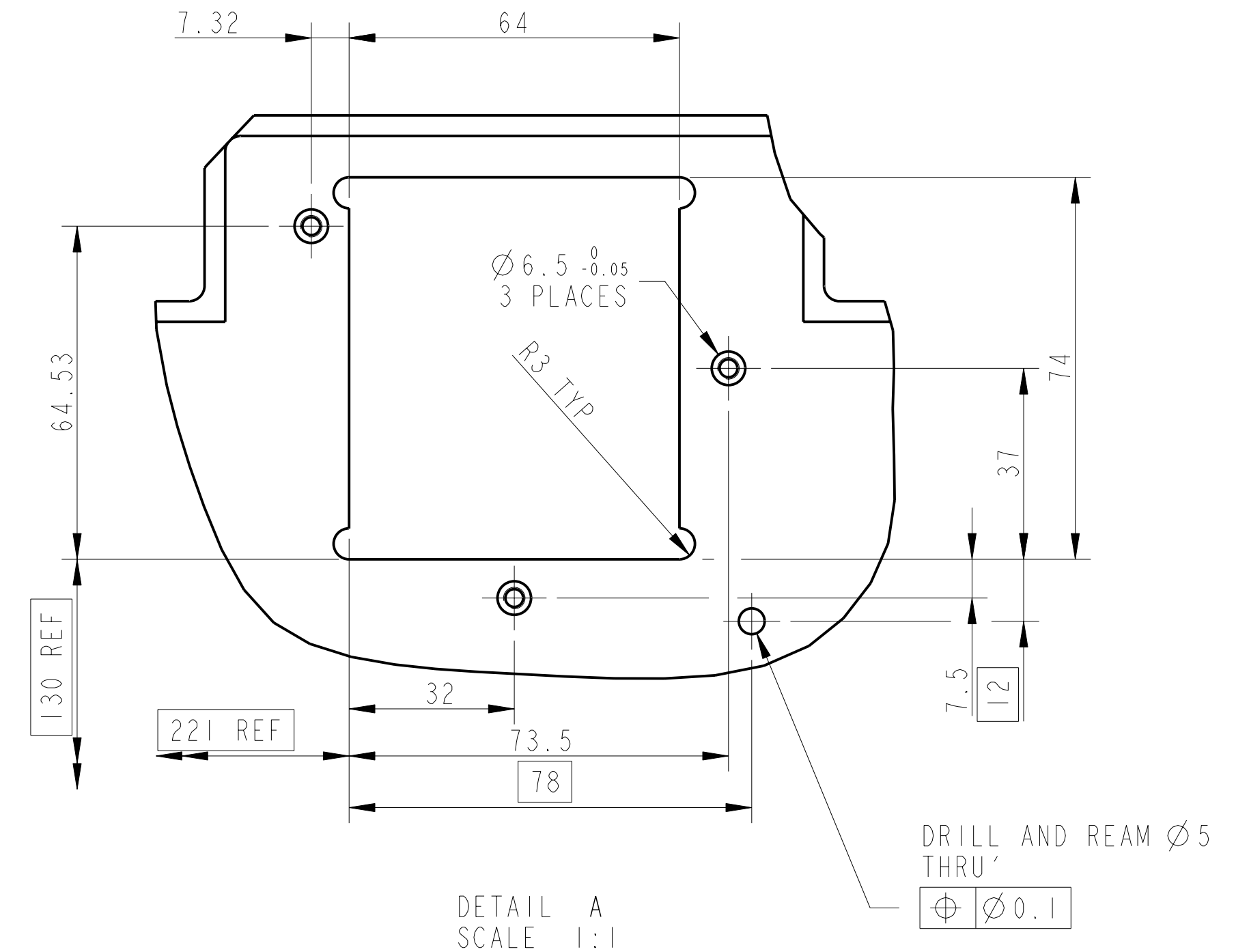
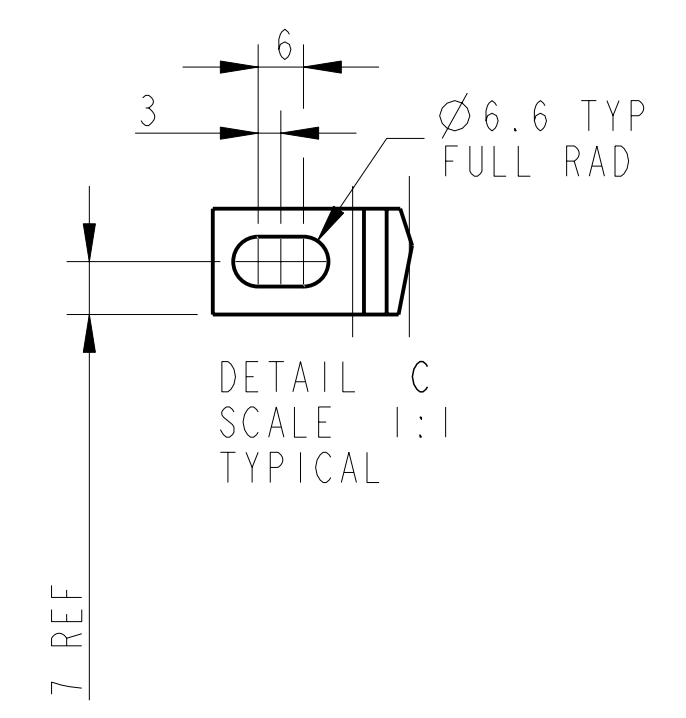
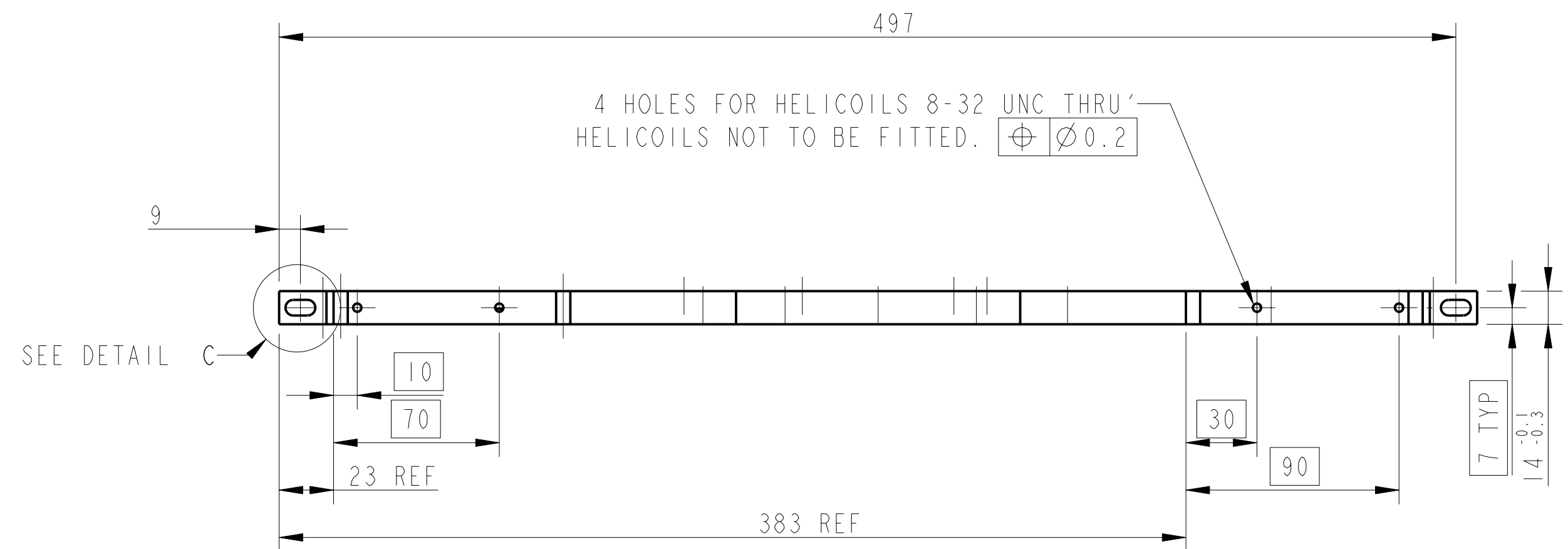


REV.	DATE	DCN #	DRAWING TREE #
A	13/OCT/06	E060239	
B	19/DEC/07	E060239-B	



NOTES: (UNLESS OTHERWISE SPECIFIED)

- REMOVE ALL SHARP EDGES. R0.2 MIN.
- DO NOT SCALE FROM DRAWING.
- ALL MACHINING FLUIDS SHALL BE WATER SOLUBLE AND FREE OF SULFUR, CHLORINE AND SILICONE. SUCH AS CINCINNATI MILACRON'S CIMTECH 410 (STAINLESS STEEL).
- SCRIBE, ENGRAVE OR STAMP PART NUMBER ON NOTED SURFACE OF PART AND A THREE DIGIT SERIAL NUMBER. SERIAL NUMBERS START AT 001 FOR THE FIRST PART AND PROCEED CONSECUTIVELY. USE 07* HIGH CHARACTERS. EXAMPLE: 000100-001 - A VIBRATOR TOOL MAY BE USED.

DIMENSIONS ARE IN mm (INCHES)
TOLERANCES:
X XX \pm 0.2
ANGULAR $\pm 0.25^\circ$

MATERIAL: AL ALLOY
5053 H4

FINISH: CLEAN AND DEGREASE
 \sqrt{Ra} (um) Ra = 1.6

NAME	DATE	SIZE
DRAWN	1 WILMOT	03/10/06
CHECKED	J'OOD	04/SEP/06
APPROVED	TM	04/SEP/06

SCALE 1:21 PROJECTION

CALIFORNIA INSTITUTE OF TECHNOLOGY
MASSACHUSETTS INSTITUTE OF TECHNOLOGY
RUTGERS UNIVERSITY
RUTHERFORD APPLIION LABORATORIES

SYSTEM: ADVANCED LIGO
SUB-SYSTEM: SUS
NEXT ASSY: QUAD N-TYPE TABLECLOTH
PART NAME: FRONT AND REAR PLATE
NOISE TABLECLOTH

DRG. NO.: D060311
SHEET 1 OF 1