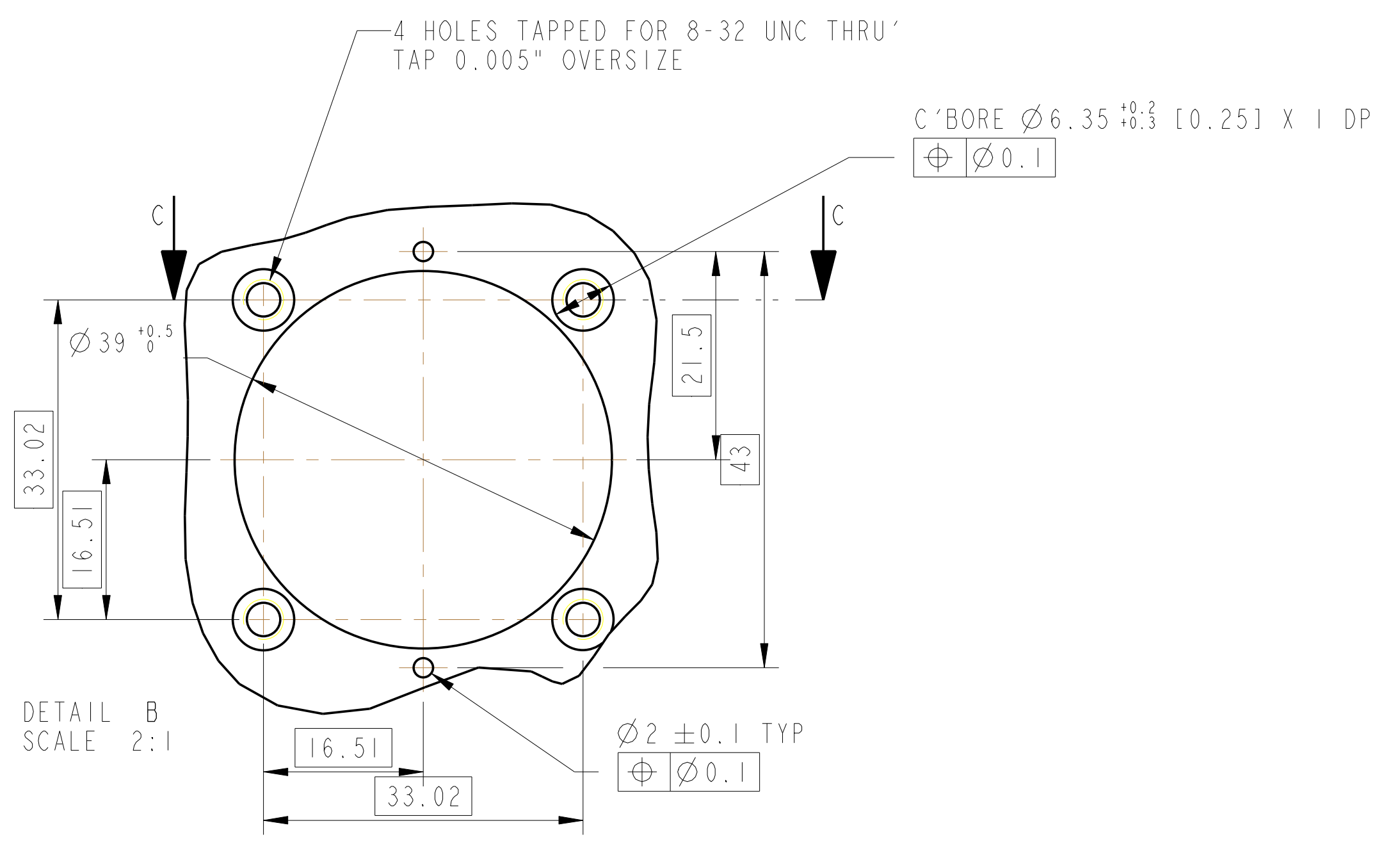
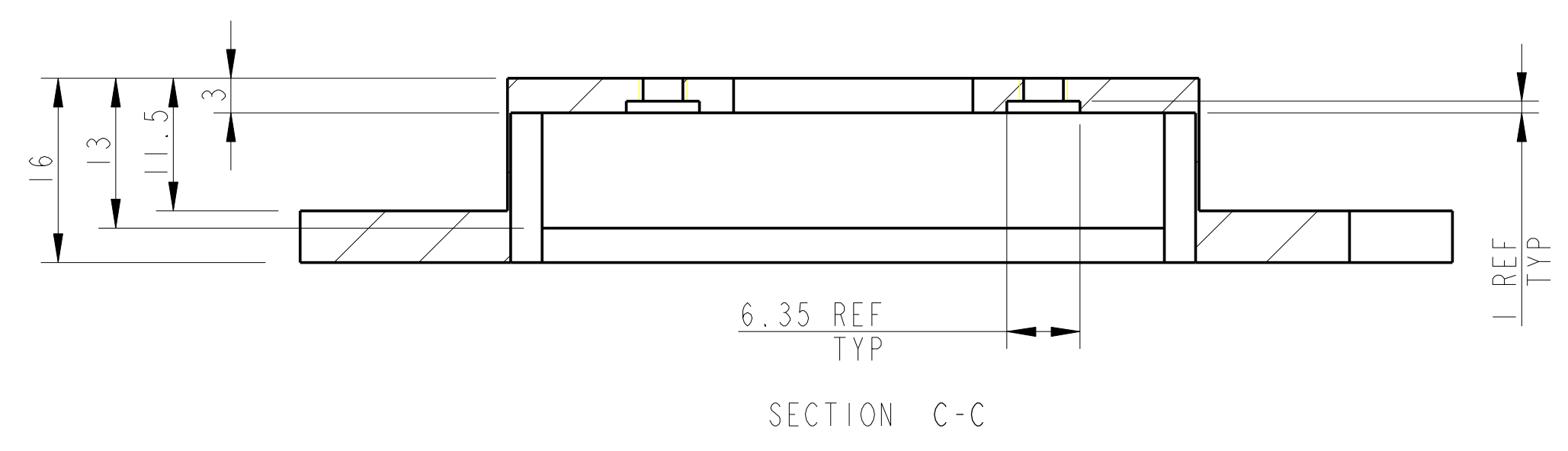
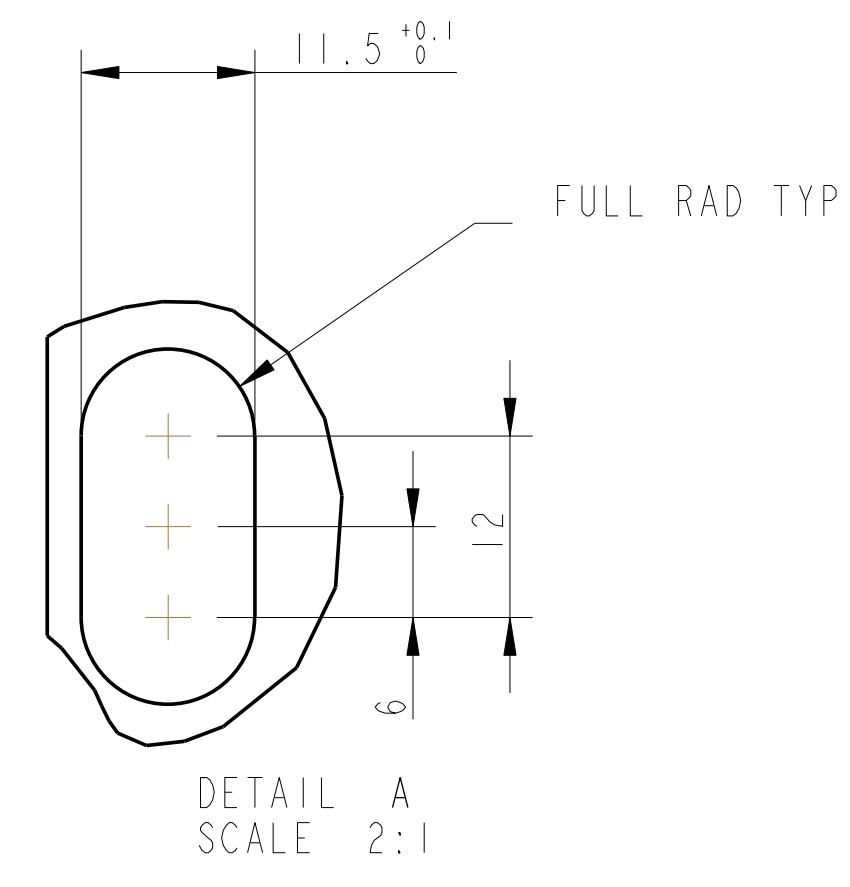
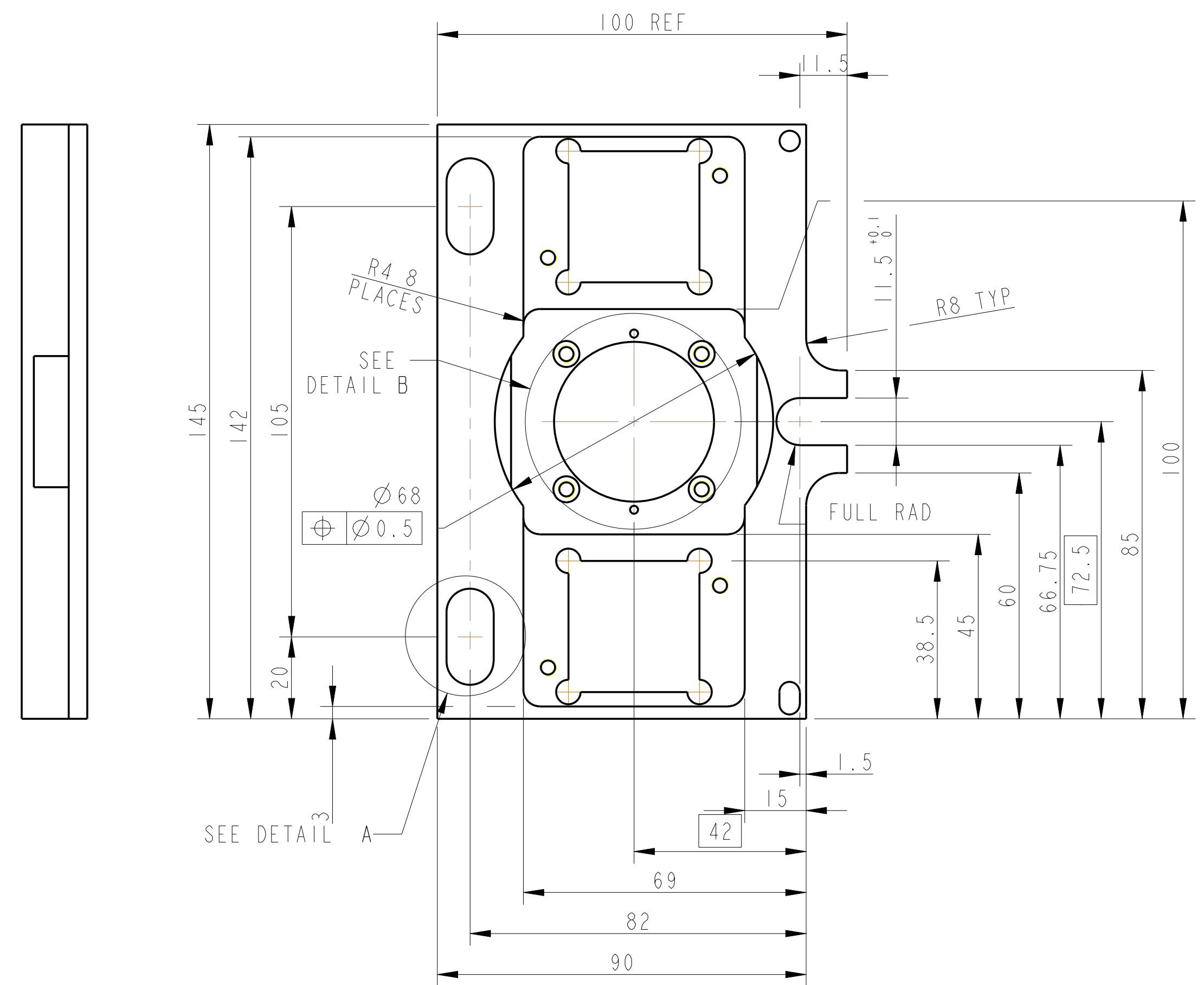
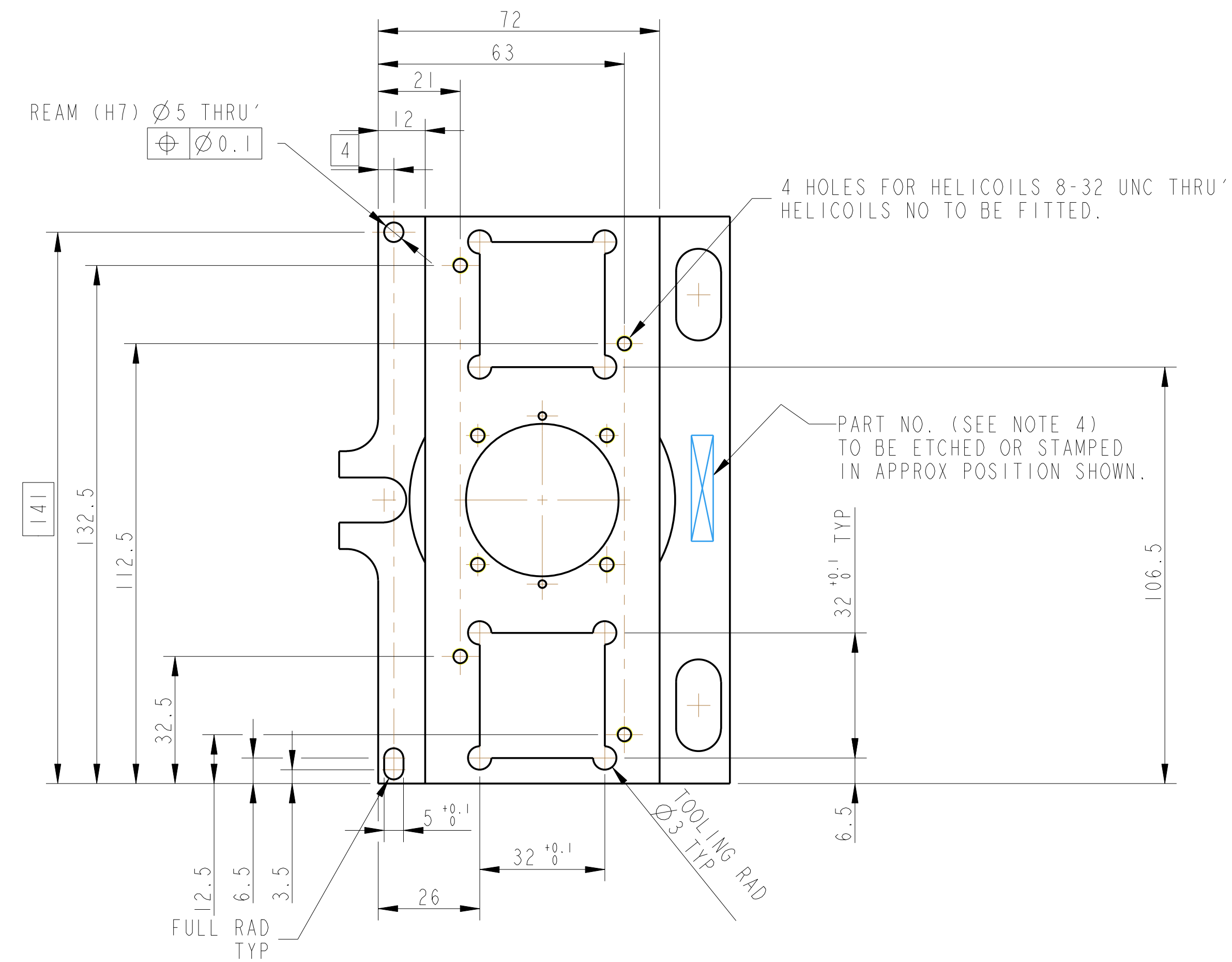


REV.	DATE	DCN #	DRAWING TREE #
A	13/OCT/06	E060239	
B	19/DEC/07	E060239-B	
E	16/JULY/08	E080369	



NOTES: (UNLESS OTHERWISE SPECIFIED)

- REMOVE ALL SHARP EDGES.
- DO NOT SCALE FROM DRAWING.
- ALL MACHINING FLUIDS SHALL BE WATER SOLUBLE AND FREE OF SULFUR, CHLORINE AND SILICONE, SUCH AS CINCINNATI MILACRON'S CIMTECH 410 (STAINLESS STEEL).
- SCRIBE, ENGRAVE OR STAMP DRAWING PART NUMBER ON NOTED SURFACE OF PART AND A THREE DIGIT SERIAL NUMBER. SERIAL NUMBERS START AT 001 FOR THE FIRST PART AND PROCEED CONSECUTIVELY. USE 07\* HIGH CHARACTERS. EXAMPLE: 000000-001. A VIBRATORY TOOL MAY BE USED.

DIMENSIONS ARE IN mm (INCHES)

TOLERANCES:

mm (inches)

Ø, H, K ± 0.2

ANGULAR ±0.25°

MATERIAL: AL ALLOY 5083 H4

FINISH: CLEAN AND DEGREASED

µm (inches)

Ra = 1.6

DRAWN: I WILMOT 03/10/06

CHECKED: XJB 23/06/08

APPROVED: XJB 16/JULY/08

SCALE: 1:1 PROJECTION: 1st ANGLE

CALIFORNIA INSTITUTE OF TECHNOLOGY  
 MASSACHUSETTS INSTITUTE OF TECHNOLOGY  
 DR. GLASSON UNIVERSITY GEO 600 GROUP  
 RUTHERFORD APPLETON LABORATORIES

SYSTEM: **ADVANCED LIGO**

SUB-SYSTEM: **SUS**

NEXT ASSY: **QUAD N-TYPE TABLECLOTH**

PART NAME: **GSEM AND ECD MOUNTING BRACKET (LOCAL CONTROLS)**

DRG. NO.: **D060318**

SHEET: **1** OF **1**