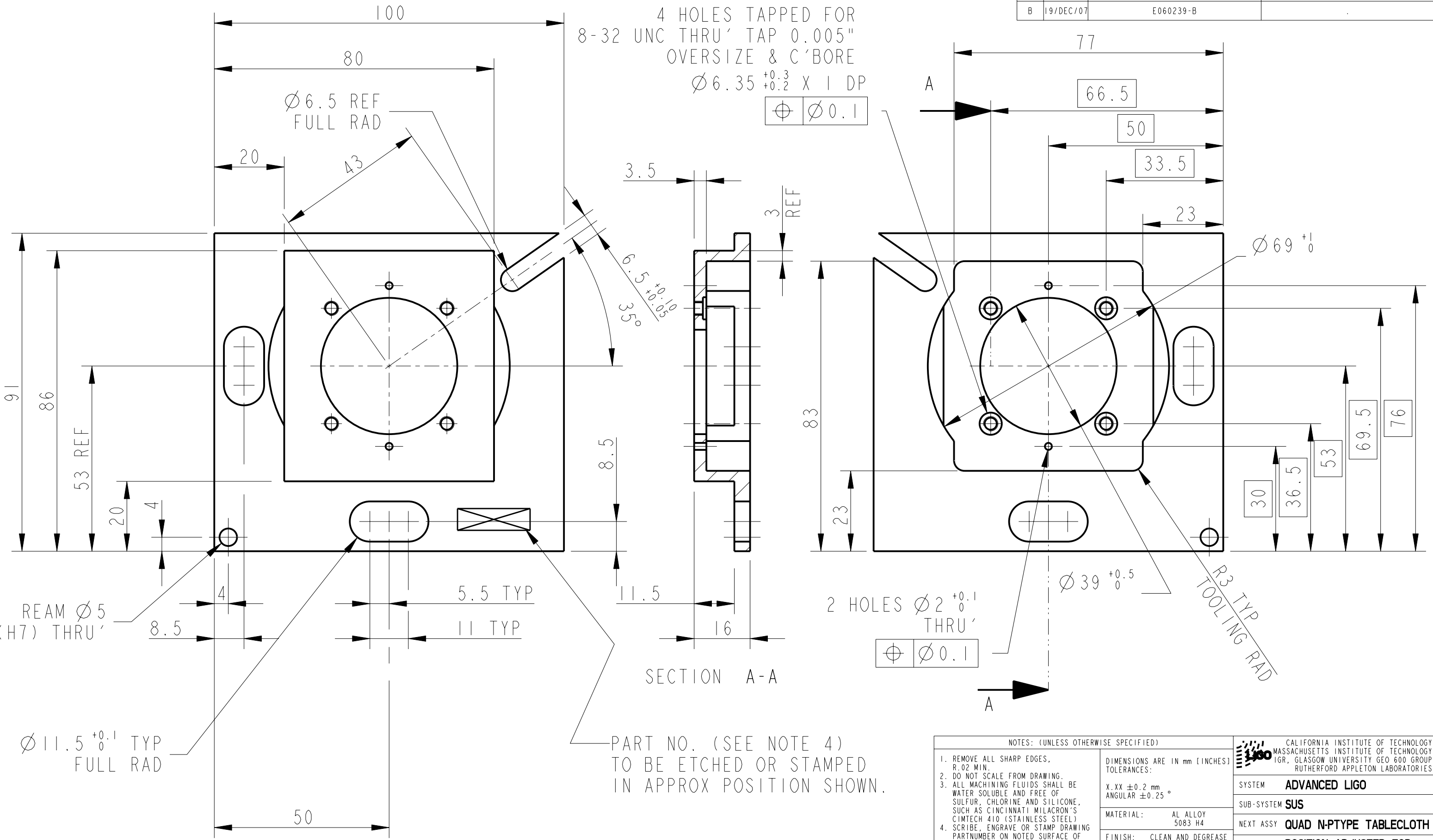


REV.	DATE	DCN #	DRAWING TREE #
A	13/OCT/06	E060239	
B	19/DEC/07	E060239-B	



NOTES: (UNLESS OTHERWISE SPECIFIED)

- REMOVE ALL SHARP EDGES, R.02 MIN.
- DO NOT SCALE FROM DRAWING.
- ALL MACHINING FLUIDS SHALL BE WATER SOLUBLE AND FREE OF SULFUR, CHLORINE AND SILICONE, SUCH AS CINCINNATI MILACRON'S CIMTECH 410 (STAINLESS STEEL)
- SCRIBE, ENGRAVE OR STAMP DRAWING PART NUMBER ON NOTED SURFACE OF PART AND A THREE DIGIT SERIAL NUMBER. SERIAL NUMBERS START AT 001 FOR THE FIRST PART AND PROCEED CONSECUTIVELY. USE .07" HIGH CHARACTERS. EXAMPLE: D020188- 001. A VIBRATORY TOOL MAY BE USED.

DIMENSIONS ARE IN mm [INCHES]
 TOLERANCES:
 $X.XX \pm 0.2$ mm
 ANGULAR $\pm 0.25^\circ$

MATERIAL: AL ALLOY 5083 H4

FINISH: CLEAN AND DEGREASE
 $\sqrt{\mu m}$ [μin] Ra = 1.6

NAME	DATE
DRAWN I WILMUT	03/10/06
CHECKED J'OD	4/SEPT/06
APPROVED IW	28/SEP/06

SYSTEM	ADVANCED LIGO
SUB-SYSTEM	SUS
NEXT ASSY	QUAD N-P-TYPE TABLECLOTH
PART NAME	POSITION ADJUSTER FOR FRONT PITCH OSEM
SIZE	B
DRG. NO.	D060321
SHEET	1 OF 1

SCALE 1:1 PROJECTION: SHEET 1 OF 1