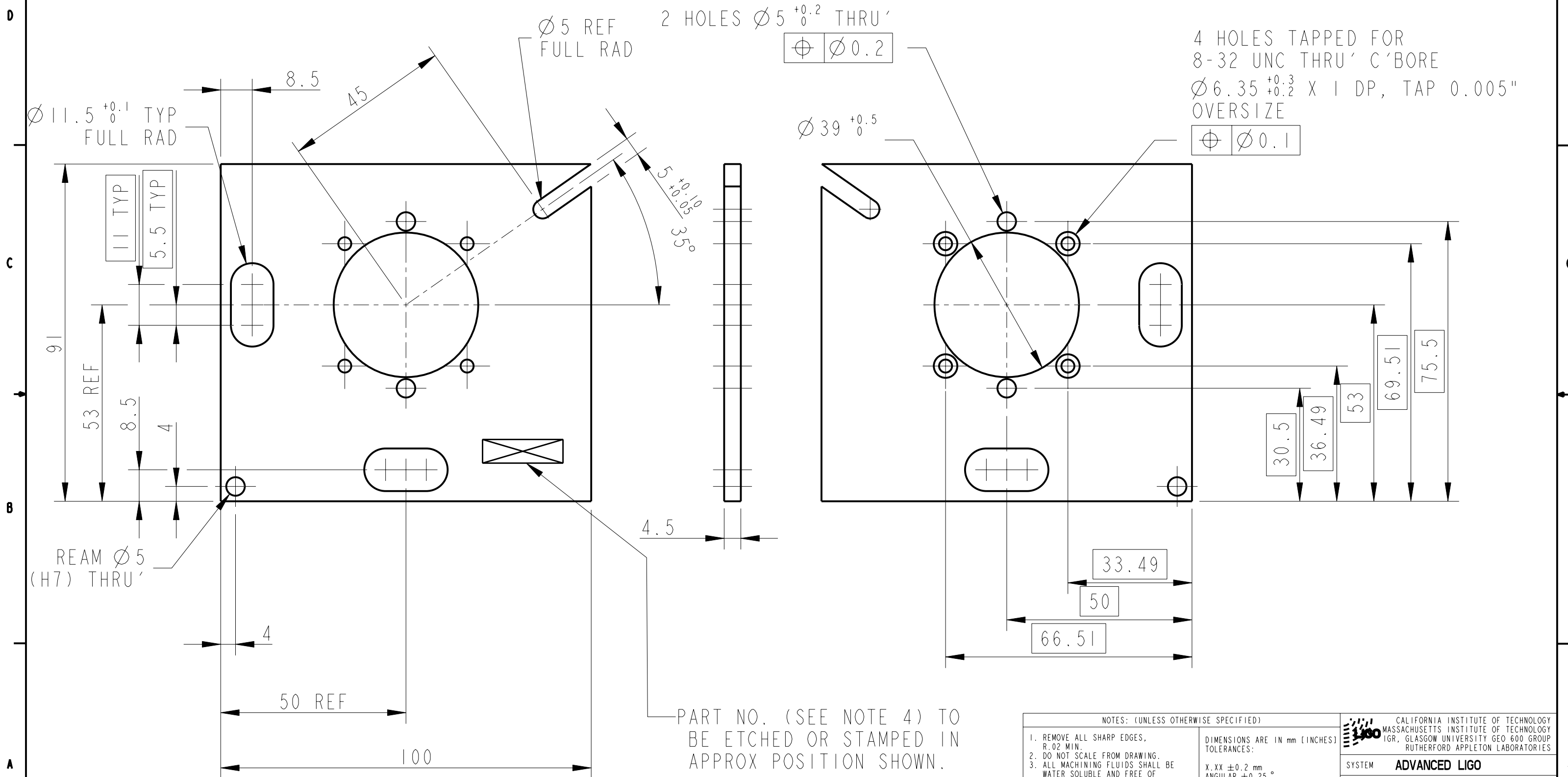


| REV. | DATE | DCN # | DRAWING TREE # |
|------|------------|-----------|----------------|
| A | 13/OCT/06 | E060239 | |
| B | 19/DEC/07 | E060239-B | |
| E | 16/JULY/08 | E080369 | |



| NOTES: (UNLESS OTHERWISE SPECIFIED) | | | CALIFORNIA INSTITUTE OF TECHNOLOGY MASSACHUSETTS INSTITUTE OF TECHNOLOGY IGR, GLASGOW UNIVERSITY GEO 600 GROUP RUTHERFORD APPLETON LABORATORIES | | | | | | | | | |
|--|----------|-----|--|----------|----------------|----------|-------------|--------|--|----------|---|--|
| 1. REMOVE ALL SHARP EDGES, R.02 MIN. 2. DO NOT SCALE FROM DRAWING. 3. ALL MACHINING FLUIDS SHALL BE WATER SOLUBLE AND FREE OF SULFUR, CHLORINE AND SILICONE, SUCH AS CINCINNATI MILACRON'S CIMTECH 410 (STAINLESS STEEL) 4. SCRIBE, ENGRAVE OR STAMP DRAWING PART NUMBER ON NOTED SURFACE OF PART AND A THREE DIGIT SERIAL NUMBER. SERIAL NUMBERS START AT 001 FOR THE FIRST PART AND PROCEED CONSECUTIVELY. USE .07" HIGH CHARACTERS. EXAMPLE: D020188- 001. A VIBRATORY TOOL MAY BE USED. | | | DIMENSIONS ARE IN mm [INCHES] TOLERANCES: X.XX ±0.2 mm ANGULAR ±0.25 ° | | | | | | | | | |
| MATERIAL: AL ALLOY 5083 H4 | | | SYSTEM ADVANCED LIGO | | | | | | | | | |
| FINISH: CLEAN AND DEGREASED √μm [μin] Ra = 1.6 | | | SUB-SYSTEM SUS | | | | | | | | | |
| <table border="1"> <thead> <tr> <th>NAME</th> <th>DATE</th> </tr> </thead> <tbody> <tr> <td>DRAWN I WILMUT</td> <td>03/10/06</td> </tr> <tr> <td>CHECKED AJB</td> <td>5MAY08</td> </tr> <tr> <td>APPROVED AJB</td> <td>16JULY08</td> </tr> </tbody> </table> | | | NAME | DATE | DRAWN I WILMUT | 03/10/06 | CHECKED AJB | 5MAY08 | APPROVED AJB | 16JULY08 | NEXT ASSY QUAD N-P-TYPE TABLECLOTH | |
| NAME | DATE | | | | | | | | | | | |
| DRAWN I WILMUT | 03/10/06 | | | | | | | | | | | |
| CHECKED AJB | 5MAY08 | | | | | | | | | | | |
| APPROVED AJB | 16JULY08 | | | | | | | | | | | |
| <table border="1"> <thead> <tr> <th>SIZE</th> <th>DRG. NO.</th> <th>REV</th> </tr> </thead> <tbody> <tr> <td>B</td> <td>D060323</td> <td>E</td> </tr> </tbody> </table> | | | SIZE | DRG. NO. | REV | B | D060323 | E | PART NAME TRANSVERSE OSEM POSITION ADJUSTMENT PLATE | | | |
| SIZE | DRG. NO. | REV | | | | | | | | | | |
| B | D060323 | E | | | | | | | | | | |
| SCALE 1:1 | | | PROJECTION: | | | | | | | | | |
| | | | SHEET 1 OF 1 | | | | | | | | | |