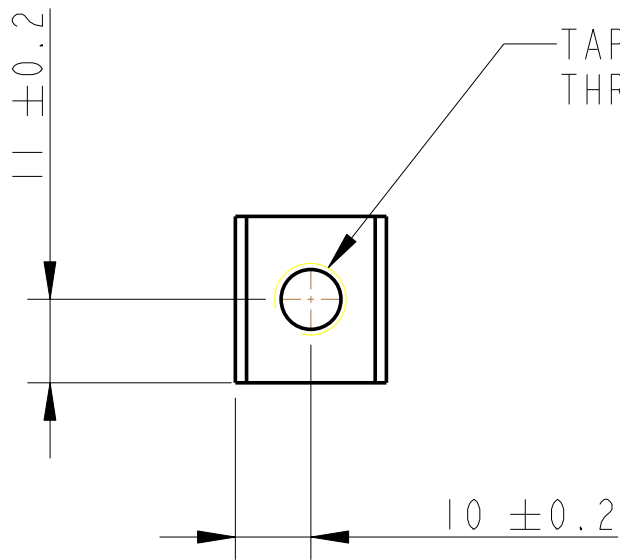
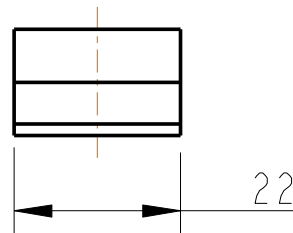
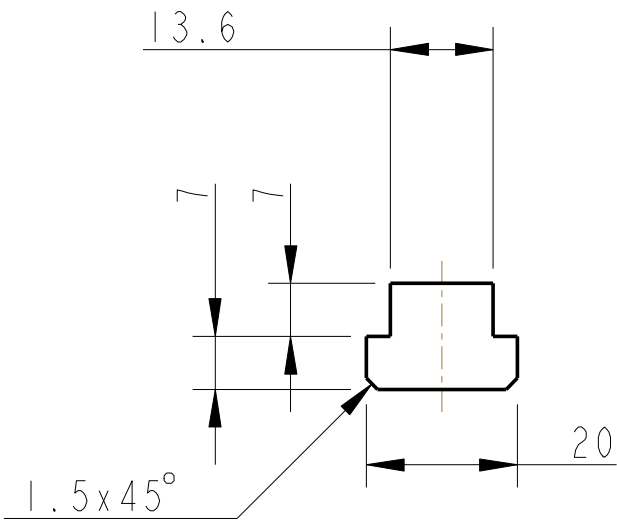


REV.	DATE	DCN #	DRAWING TREE #
A	13/OCT/06	E060238	
E	15/JULY/08	E080367	



TAP FOR 3/8-16 UNC HELICOIL
THRO' HELICOIL NOT TO BE FITTED

NOTES: (UNLESS OTHERWISE SPECIFIED)

1. REMOVE ALL SHARP EDGES, R.02 MIN.
2. DO NOT SCALE FROM DRAWING.
3. ALL MACHINING FLUIDS SHALL BE WATER SOLUBLE AND FREE OF SULFUR, CHLORINE AND SILICONE, SUCH AS CINCINNATI MILACRON'S CIMTECH 410 (STAINLESS STEEL)
4. SCRIBE, ENGRAVE OR STAMP DRAWING PARTNUMBER ON NOTED SURFACE OF PART AND A THREE DIGIT SERIAL NUMBER. SERIAL NUMBERS START AT 001 FOR THE FIRST PART AND PROCEED CONSECUTIVELY. USE .07" HIGH CHARACTERS. EXAMPLE: D020188- 001. A VIBRATORY TOOL MAY BE USED.

DIMENSIONS ARE IN mm [INCHES]
TOLERANCES:

X.XX ±0.2 mm
ANGULAR ±0.25 °

MATERIAL: ST STEEL
304/316

FINISH: CLEAN
√μm [μin] Ra = 1.6 OR STOCK

	NAME	DATE
DRAWN	I WILMUT	26/JUN/06
CHECKED	AJB	SMAY08
APPROVED	AJB	15/JULY/08

LIGO CALIFORNIA INSTITUTE OF TECHNOLOGY
MASSACHUSETTS INSTITUTE OF TECHNOLOGY
1GR, GLASGOW UNIVERSITY GEO 600 GROUP
RUTHERFORD APPLETON LABORATORIES

SYSTEM **ADVANCED LIGO**

SUB-SYSTEM **SUS**

NEXT ASSY **QUAD N-PTYPE TOP STAGE**

PART NAME **3/8-16 UNC T NUT**
BASED ON WIXROYD 2418.W120

SCALE 1:1 PROJECTION: SHEET 1 OF 1

SIZE **A**

DRG. NO. **D060328** REV **E.**