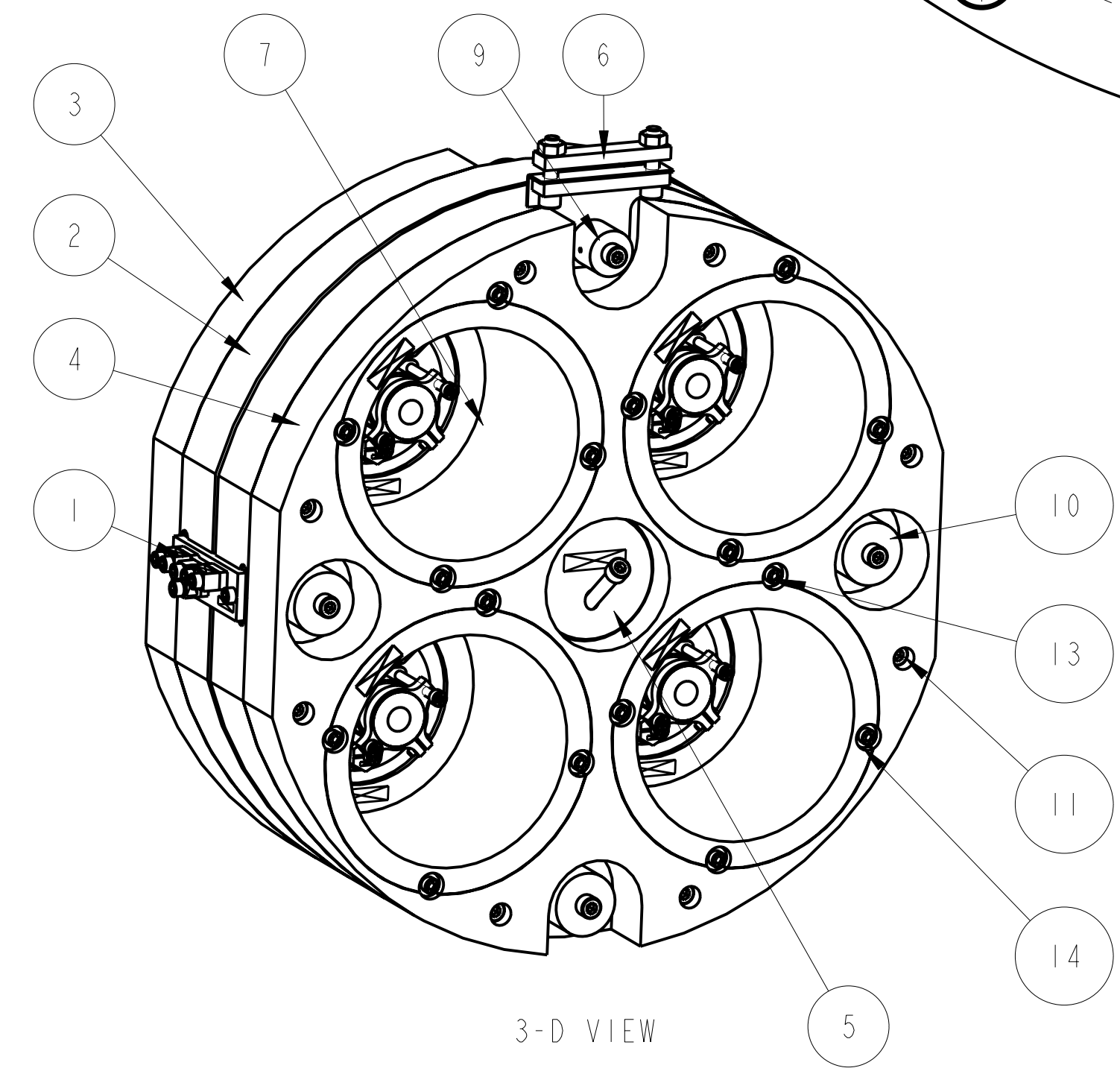
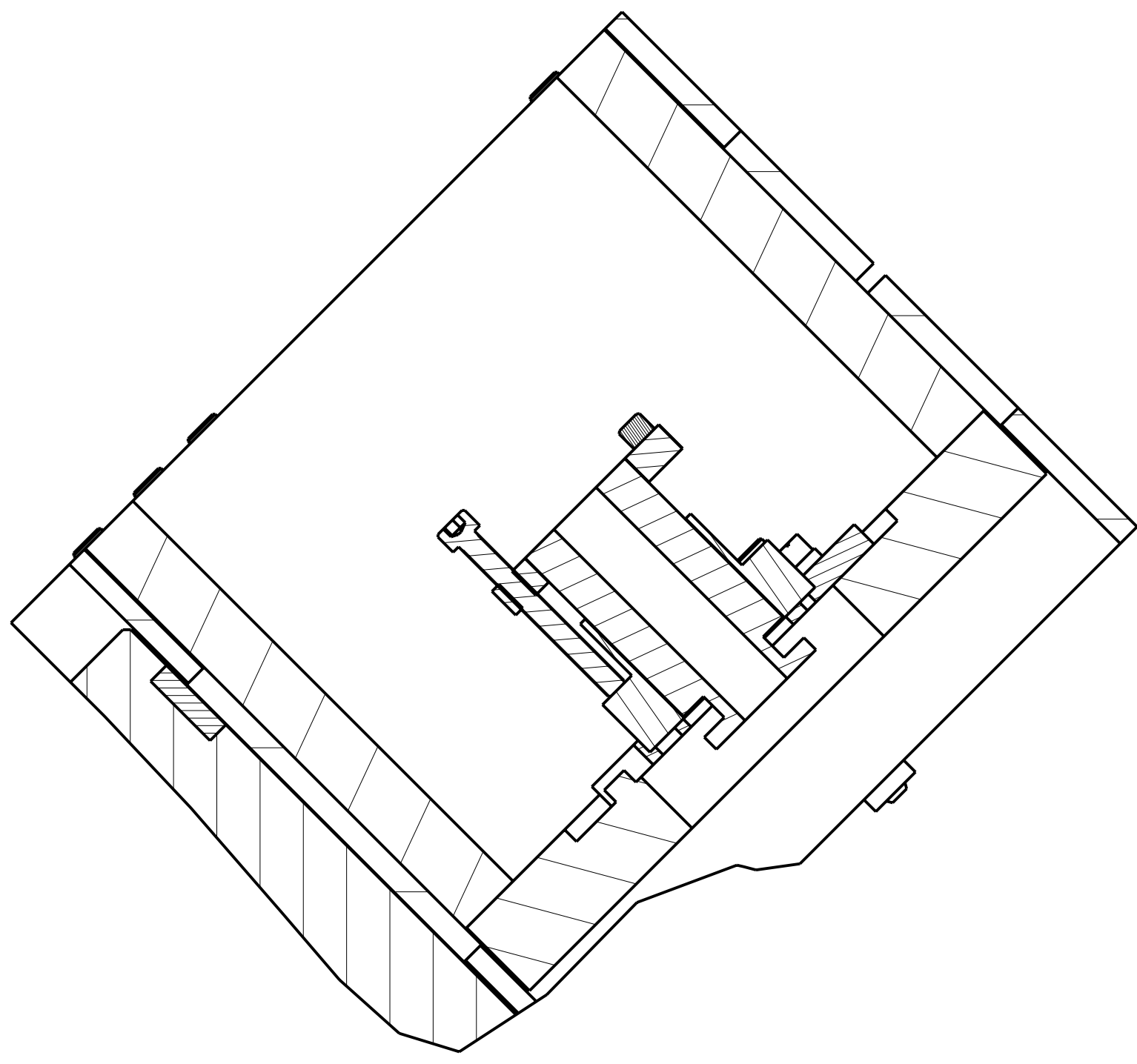
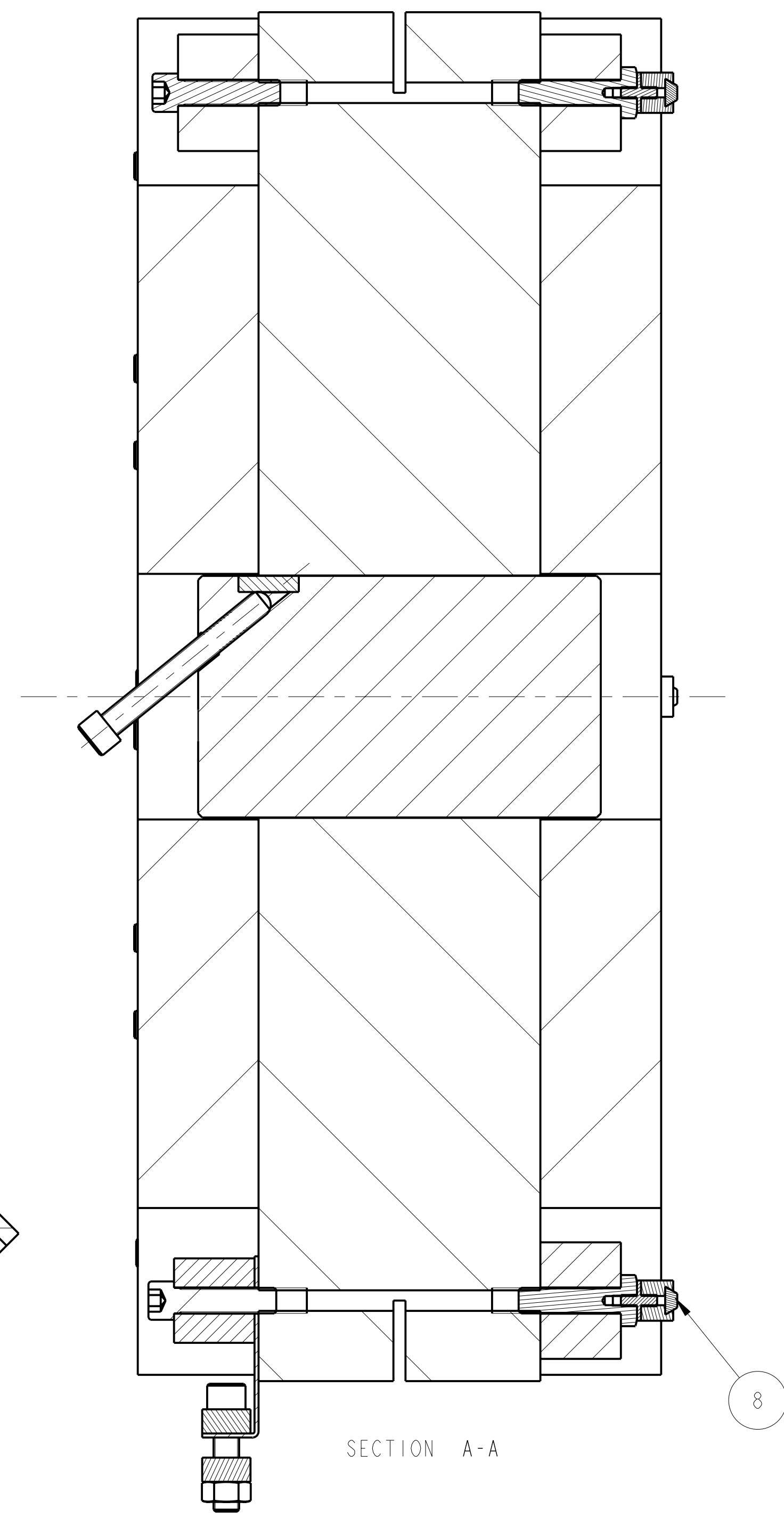
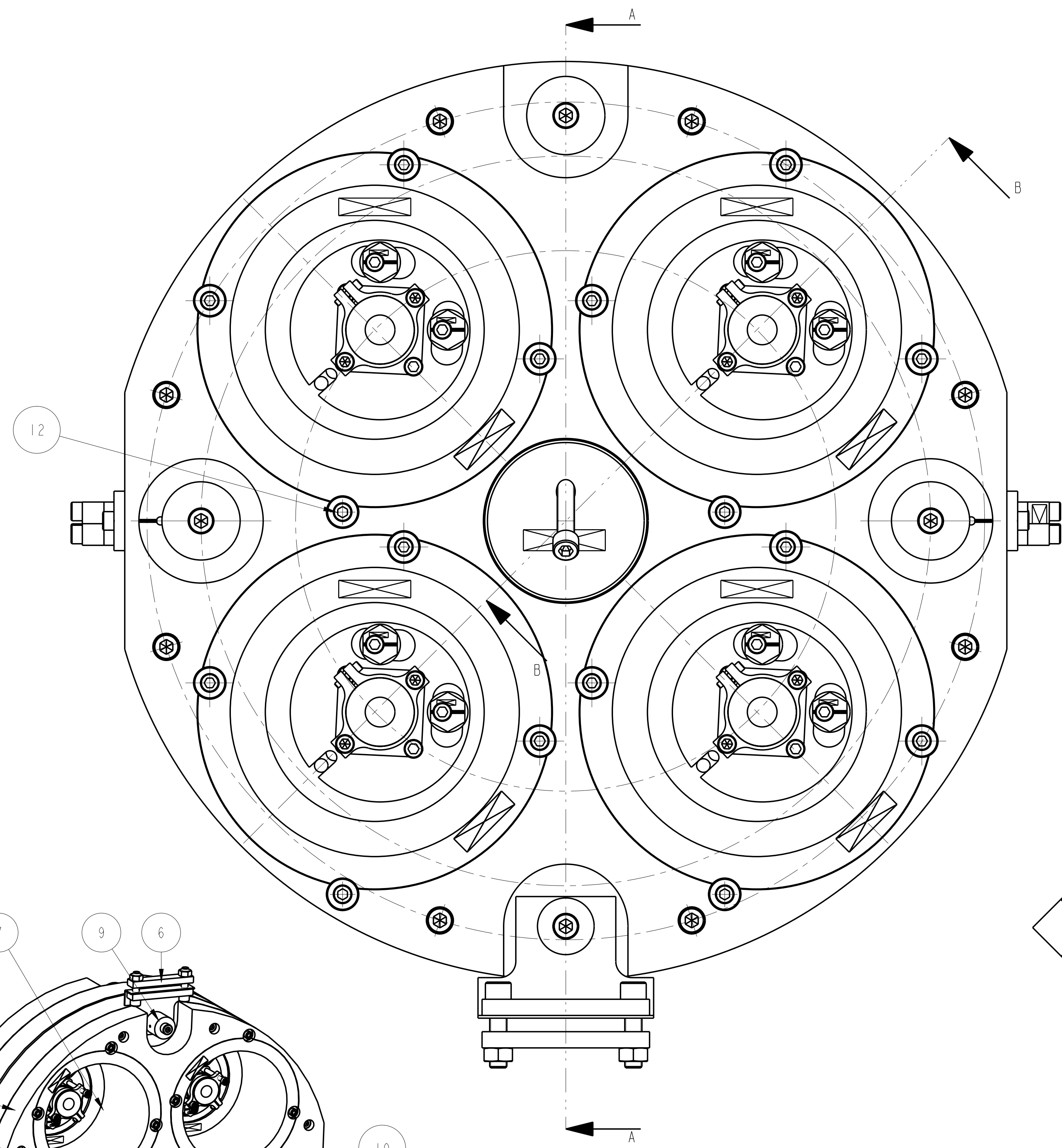


REV.	DATE	DCN #	DRAWING TREE #
A	15/OCT/06	E060240	
B	20/DEC/07	E060240-B	
E	21/JULY/08	E060370	



ITEM	QTY	SPARE/TOTAL	PART NUMBER	DESCRIPTION	MATERIALS
1	2		D060337	PENULTIMATE MASS WIRE CLAMP; .	AS DRW; AS DRAWN
2	1		D060342	CENTRAL MASS; .	ST STEEL; 304/316
3	1		D060343	FRONT PLATE; .	ST STEEL; 304/316
4	1		D060344	BACK PLATE; .	ST STEEL; 304/316
5	1		D060352	PITCH MASS; .	AS DRW; AS DRW
6	1		D070222	PEN RE MASS CABLE CLAMP; .	AS DRW; .
7	4		D080166	1TM OSEM CAN; .	AS DRW; .
8	4		D080240	PEN RE MASS BUMP STOP ASM; PENULTIMATE REACTION MASS	AS DRW; .
9	1		D060359-050.0	ADDITIONAL MASS; .	ST STEEL; 316
10	7		D060359-100.0	ADDITIONAL MASS; .	ST STEEL; 316
11	20			1/4" 20 UNC X 1" CAP HEAD SILVER PLATED; .	
12	8			8-32 x 1.50 UNC THREAD INSERT; .	
13	4			8-32 UNC X 0.625" CAP HEAD; .	
14	4			8-32 UNC WASHER; .	

SECTION A-A

SECTION B-B

3-D VIEW

NOTES: (UNLESS OTHERWISE SPECIFIED)

- REMOVE ALL SHARP EDGES.
- DO NOT SCALE FROM DRAWING.
- ALL MACHINING FLUIDS SHALL BE WATER SOLUBLE AND FREE OF SULFUR, CHLORINE AND SILICONE. SUCH AS CINCINNATI MILACRON'S CIMTECH 410 (STAINLESS STEEL).
- SCRIBE, ENGRAVE OR STAMP DRAWING PART NUMBER ON NOTED SURFACE OF PART AND A THREE DIGIT SERIAL NUMBER. SERIAL NUMBERS START AT 001 FOR THE FIRST PART AND PROCEED CONSECUTIVELY. USE 07\* HIGH CHARACTERS. EXAMPLE: D060341-001 - A VIBRATOR TOOL MAY BE USED.

DIMENSIONS ARE IN mm (INCHES)  
TOLERANCES:  
X XX ± .13  
ANGULAR ±

FINISH: CLEAN AND DEGREASED  
Ra = 1.6  
√Ra (μm)

NAME	DATE	SIZE
DRAWN	30/06/09	1/1
CHECKED	30/06/09	1/1
APPROVED	30/06/09	1/1

CALIFORNIA INSTITUTE OF TECHNOLOGY  
MASSACHUSETTS INSTITUTE OF TECHNOLOGY  
GLASGOW UNIVERSITY GEO ROX GROUP  
RUTHERFORD APPLETON LABORATORIES

SYSTEM: **ADVANCED LIGO**  
SUB-SYSTEM: **SUS**  
NEXT ASSY: **THIS**  
PART NAME: **PENULTIMATE REACTION MASS QUAD**  
DRG. NO.: **D060341**  
SCALE: 1:1 PROJECTION: **4** SHEET 1 OF 1