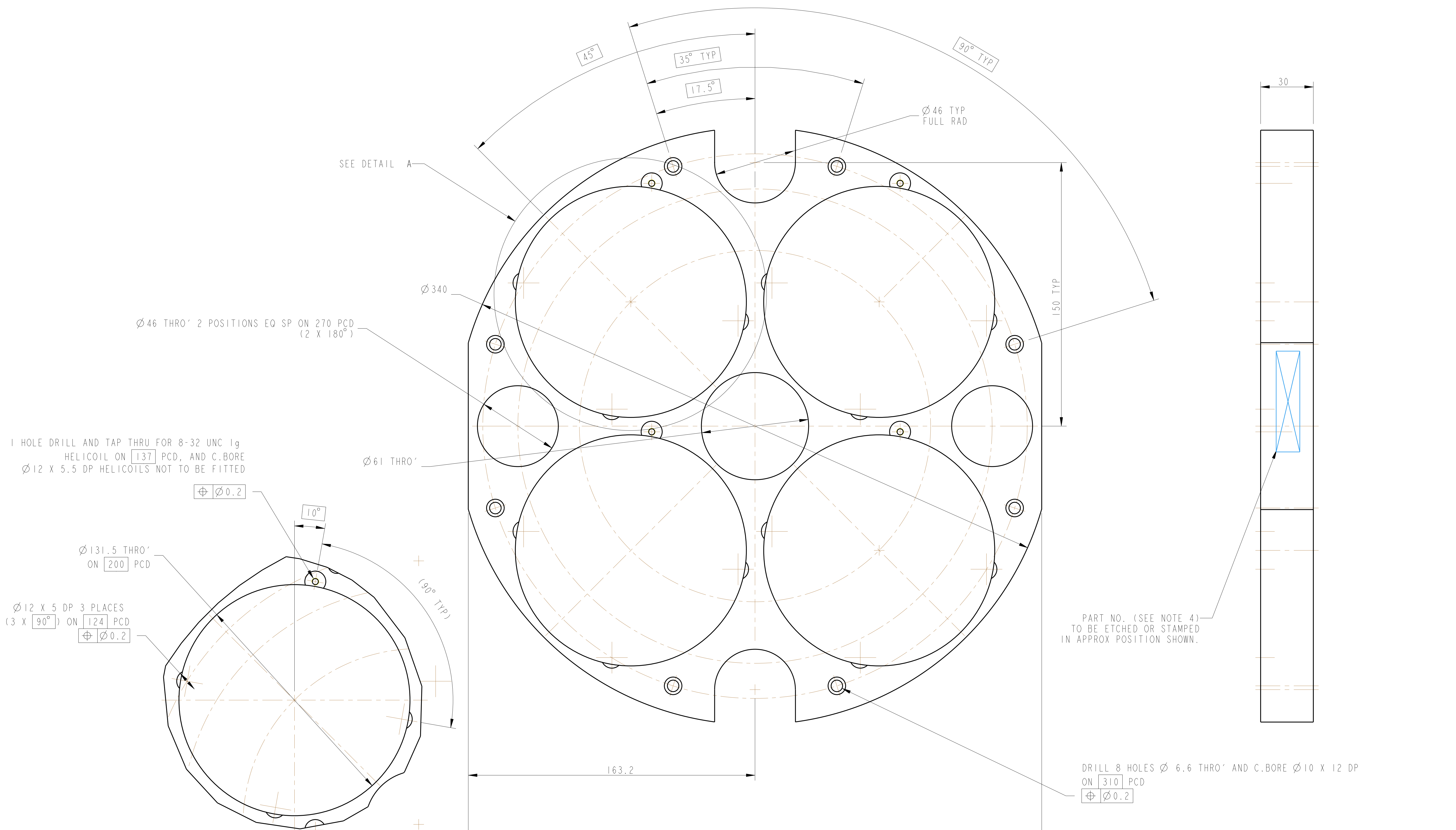


REV.	DATE	DCN #	DRAWING TREE #
A	15/OCT/06	E060240	
B	20/DEC/07	E060240-B	
G	21/JULY/08	E080370	



1 HOLE DRILL AND TAP THRU FOR 8-32 UNC 1g HELICOIL ON 137 PCD, AND C.BORE Ø12 X 5.5 DP HELICOILS NOT TO BE FITTED

Ø46 THRO' 2 POSITIONS EQ SP ON 270 PCD (2 X 180°)

Ø61 THRO'

Ø46 TYP FULL RAD

PART NO. (SEE NOTE 4) TO BE ETCHED OR STAMPED IN APPROX POSITION SHOWN.

Ø131.5 THRO' ON 200 PCD

Ø12 X 5 DP 3 PLACES (3 X 90°) ON 124 PCD

DRILL 8 HOLES Ø 6.6 THRO' AND C.BORE Ø10 X 12 DP ON 310 PCD

DETAIL A SCALE 1:1 4 PLACES EQ SP (4 X 90°)

NOTES: (UNLESS OTHERWISE SPECIFIED)		CALIFORNIA INSTITUTE OF TECHNOLOGY	
1. REMOVE ALL SHARP EDGES.	2. DO NOT SCALE FROM DRAWING.	MATERIAL: 304/316	
3. ALL MACHINING FLUIDS SHALL BE WATER SOLUBLE AND FREE OF SULFUR, CHLORINE AND SILICONE. SUCH AS CHEMURATE WILCOXON'S CIMTECH 410 STAINLESS STEEL.	4. SCRIBE ENGRAVE OR STAMP DRAWING PART NUMBER ON NOTED SURFACE OF PART AND A THREE DIGIT SERIAL NUMBER. SERIAL NUMBERS START AT 001 FOR THE FIRST PART AND PROCEED CONSECUTIVELY. USE 07* HIGH CHARACTERS. EXAMPLE: 000000-001. A VIBRATOR TOOL MAY BE USED.	FINISH: CLEAN, GREASE FREE	DATE: 18/JULY/08
DIMENSIONS ARE IN mm (INCHES)		NAME: J. O'BELL	DATE: 05/JAN/06
TOLERANCES:		CHECKED: A.J.B.	DATE: 18/JULY/08
X, Y, Z ± 0.2		APPROVED: A.J.B.	DATE: 18/JULY/08
ANGULAR ±0.25°		SCALE: 1:1 PROJECTION: 1ST ANGLE	
MATERIAL: 304/316		SHEET 1 OF 1	
SUB-SYSTEM: SUS		PART NAME: BACK PLATE	
NEXT ASSY: PENRE ETM QUAD N-PTYPE		DRG. NO.: D060344	
PART NAME: BACK PLATE		REV: G	