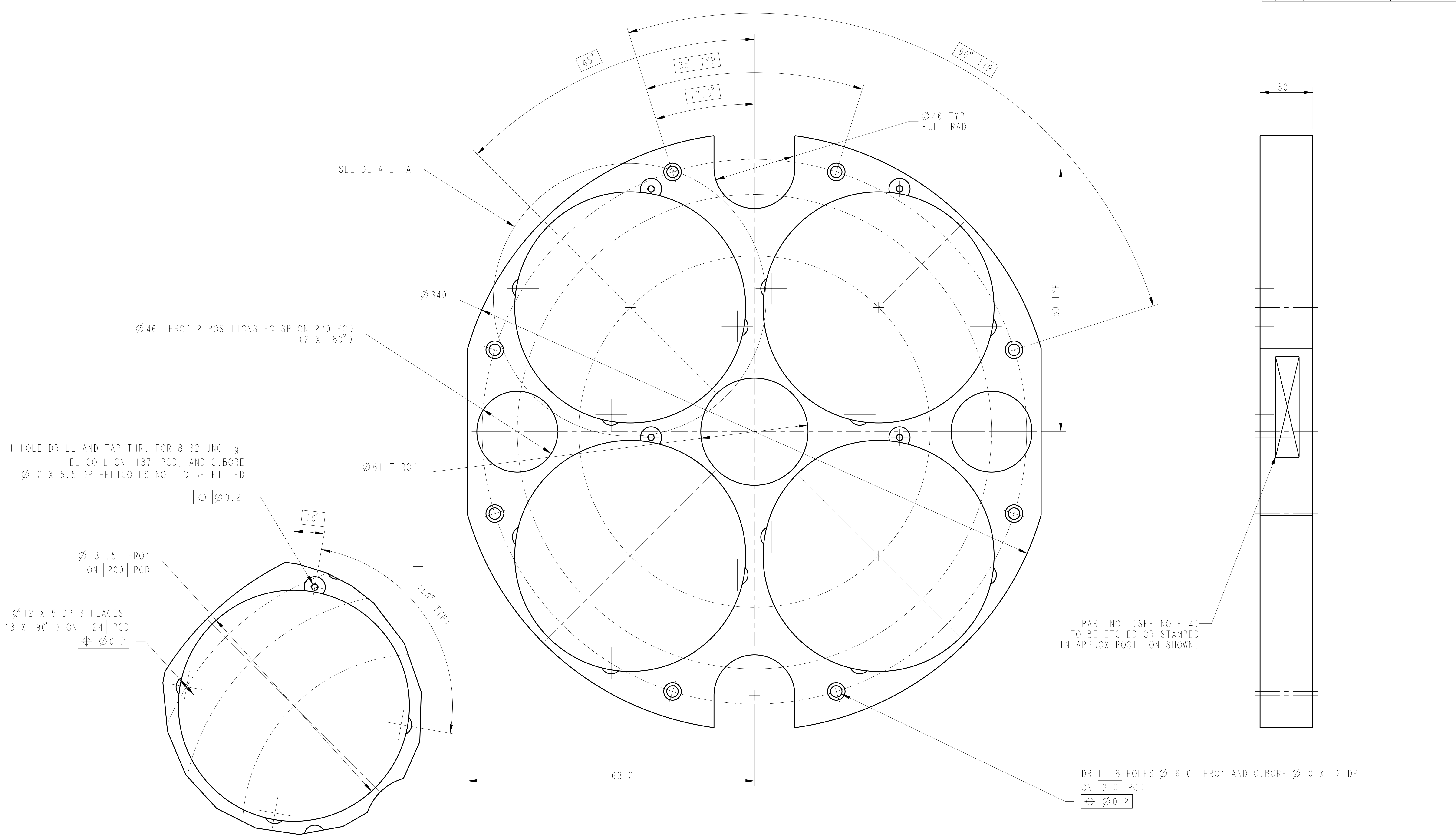


REV.	DATE	DCN #	DRAWING TREE #
A	15/OCT/06	E060240	
B	20/DEC/07	E060240-B	
G	21/JULY/08	E080370	



Ø46 THRO' 2 POSITIONS EQ SP ON 270 PCD
(2 X 180°)

1 HOLE DRILL AND TAP THRU FOR 8-32 UNC 1g
HELICOIL ON 137 PCD, AND C.BORE
Ø12 X 5.5 DP HELICOILS NOT TO BE FITTED

⊕ Ø0.2

Ø131.5 THRO'
ON 200 PCD

Ø12 X 5 DP 3 PLACES
(3 X 90°) ON 124 PCD
⊕ Ø0.2

DETAIL A
SCALE 1:1
4 PLACES EQ SP (4 X 90°)
⊕ Ø0.2

PART NO. (SEE NOTE 4)
TO BE ETCHED OR STAMPED
IN APPROX POSITION SHOWN.

DRILL 8 HOLES Ø 6.6 THRO' AND C.BORE Ø10 X 12 DP
ON 310 PCD
⊕ Ø0.2

NOTES: (UNLESS OTHERWISE SPECIFIED)		DIMENSIONS ARE IN mm (INCHES)		TOLERANCES:	
1. REMOVE ALL SHARP EDGES. R.02 MIN.	2. DO NOT SCALE FROM DRAWING.	3. ALL MACHINING FLUIDS SHALL BE WATER SOLUBLE AND FREE OF SULFUR, CHLORINE AND SILICONE. SUCH AS CINCINNATI MILACRON'S CMTTECH 410 (STAINLESS STEEL)	4. SCRIBE, ENGRAVE OR STAMP DRAWING PART NUMBER ON NOTED SURFACE OF PART AND A THREE DIGIT SERIAL NUMBER. SERIAL NUMBERS START AT 001 FOR THE FIRST PART AND PROCEED CONSECUTIVELY.	5. USE .07" HIGH CHARACTERS. EXAMPLE: D060344-001 - A VIBRATOR TOOL MAY BE USED.	6. APPROVED: JOD
MATERIAL: ST STEEL 304/316		FINISH: CLEAN, GREASE FREE Ra = 1.6		NAME: J. O'BELL DATE: 05/JAN/06	
CALIFORNIA INSTITUTE OF TECHNOLOGY MASSACHUSETTS INSTITUTE OF TECHNOLOGY GLASGOW UNIVERSITY TECH GROUP RUTHERFORD APPLETON LABORATORIES		SYSTEM: ADVANCED LIGO		SUB-SYSTEM: SUS	
NEXT ASSY: PENRE ETM QUAD		PART NAME: BACK PLATE		DRAWN: J. O'BELL DATE: 05/JAN/06	
SCALE: 1:1 PROJECTION: 1st ANGLE		DRG. NO.: D060344		SHEET 1 OF 1	