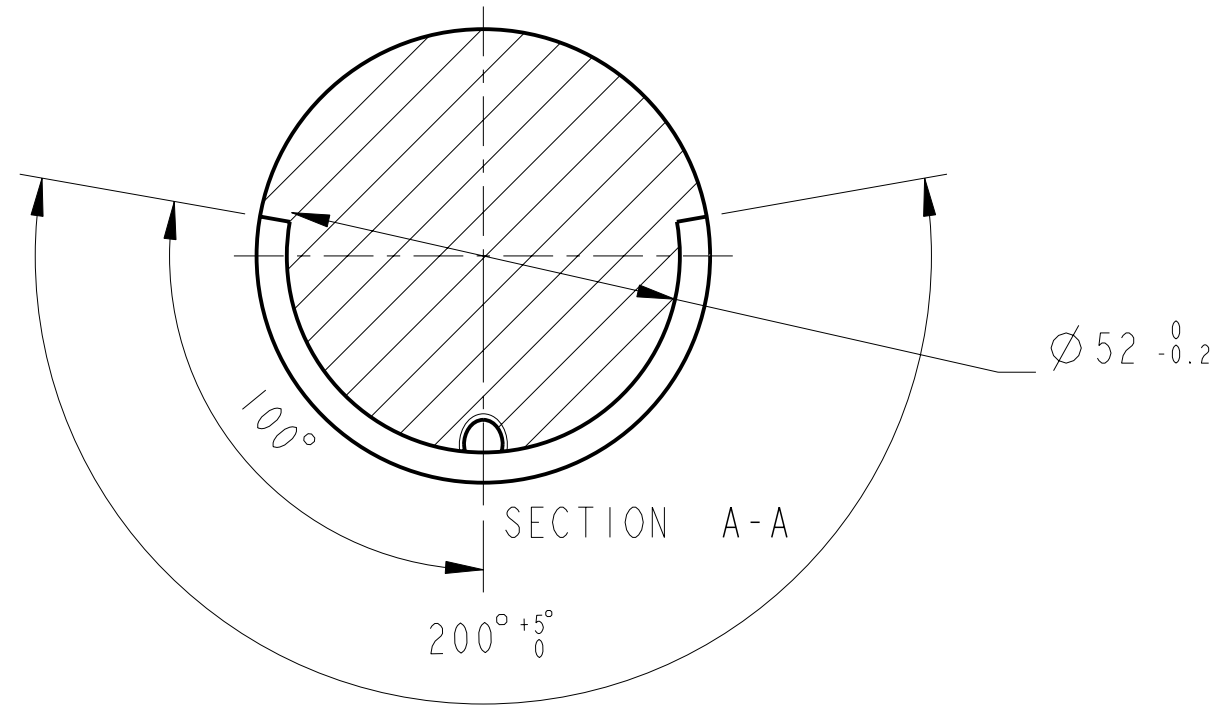
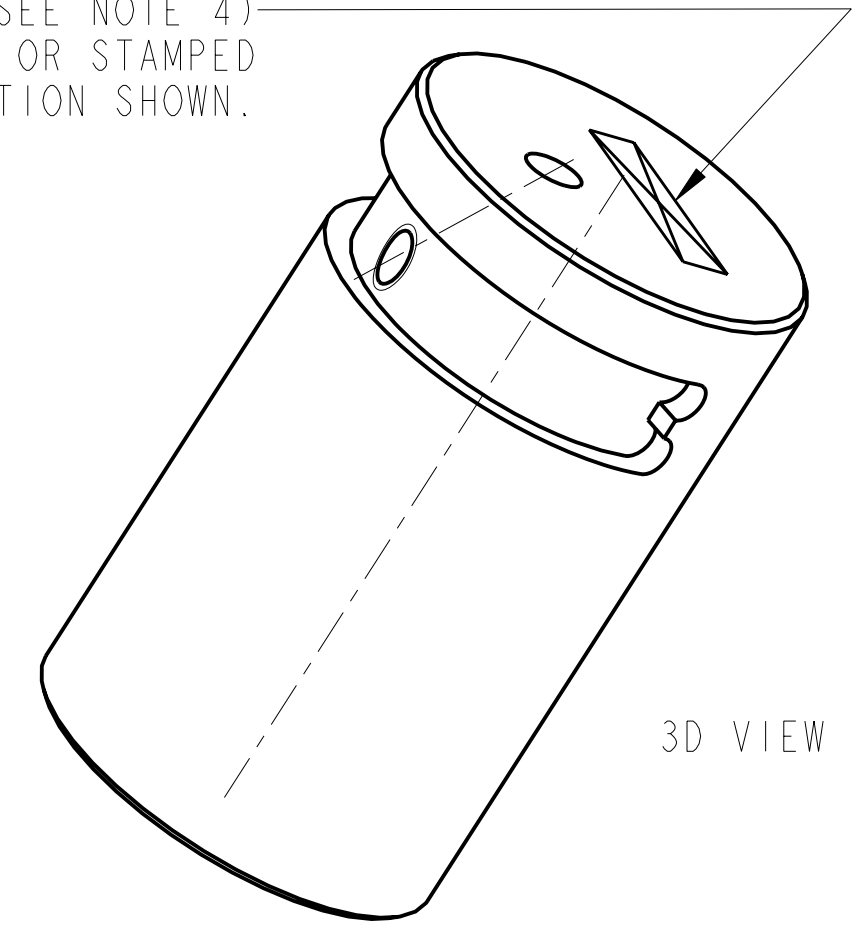


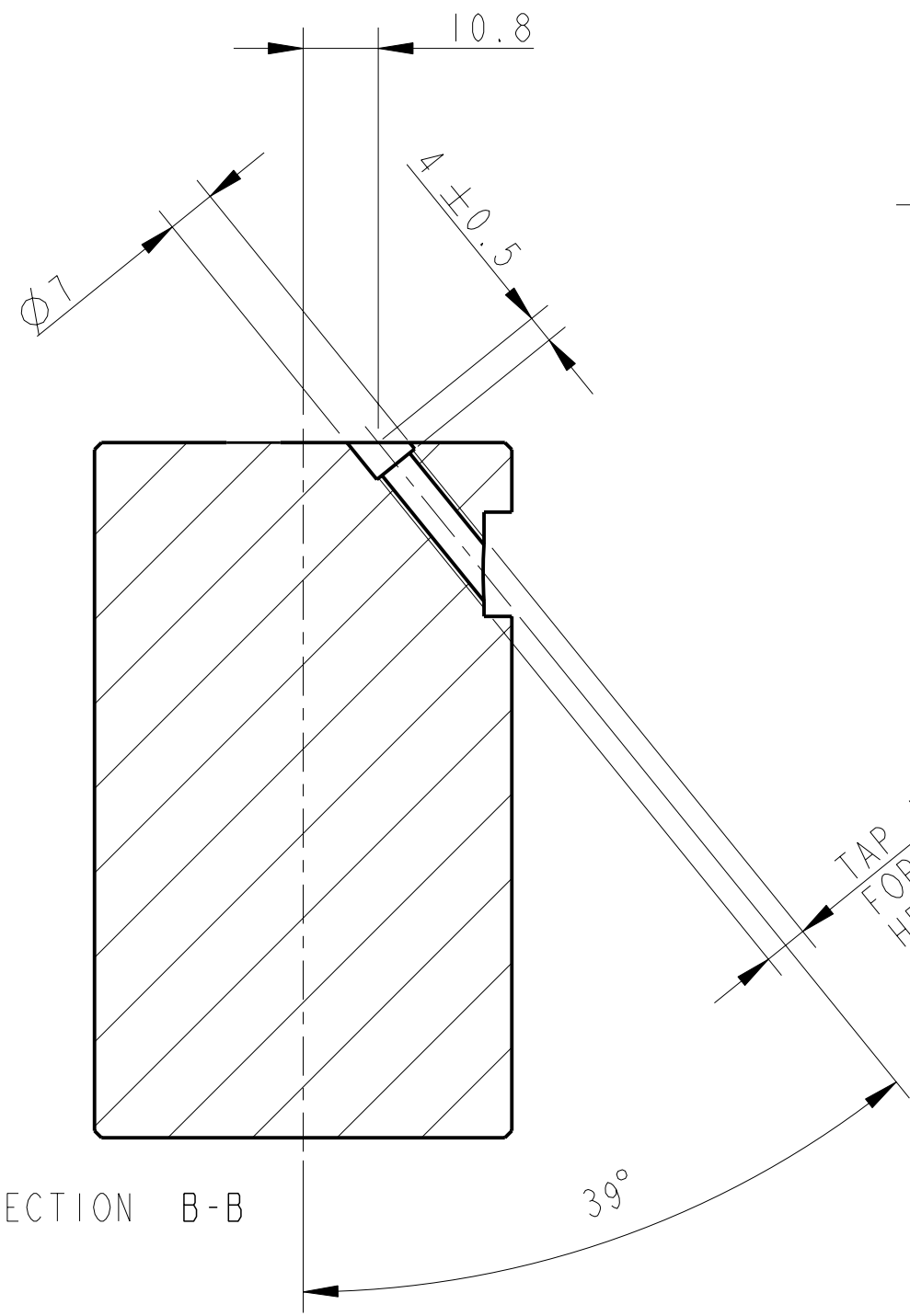
REV.	DATE	DCN #	DRAWING TREE #
A	15/OCT/06	E060240	
B	20/DEC/07	E060240-B	
F	21/JULY/08	E080370	



PART NO. (SEE NOTE 4)  
TO BE ETCHED OR STAMPED  
IN APPROX POSITION SHOWN.



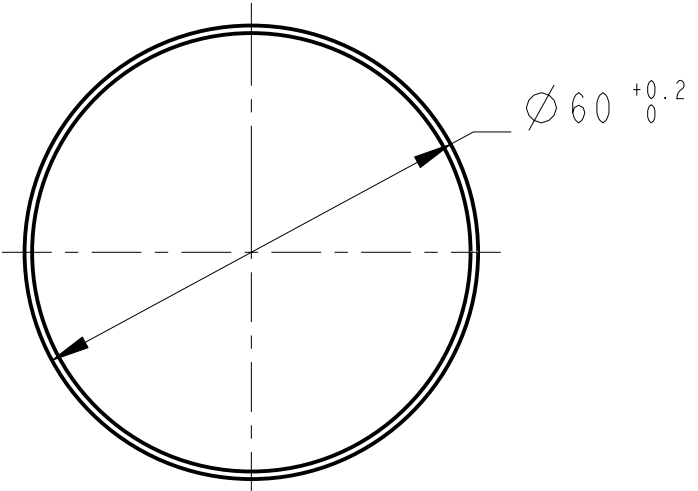
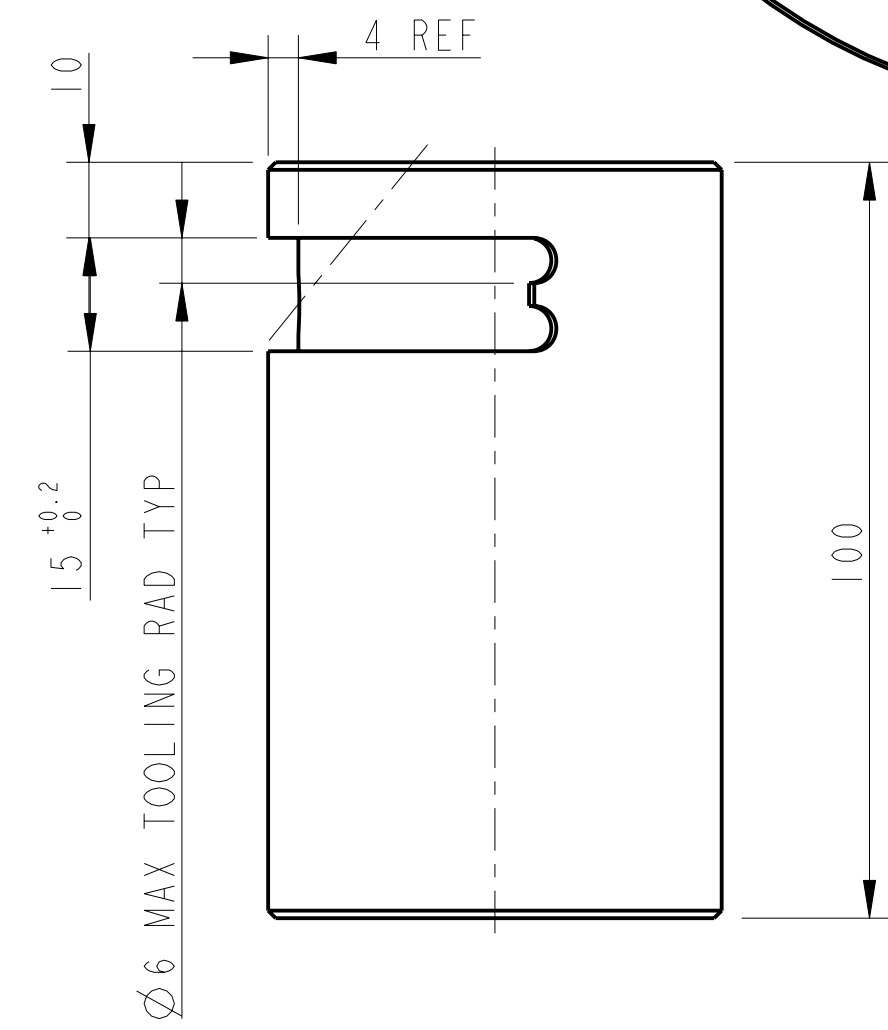
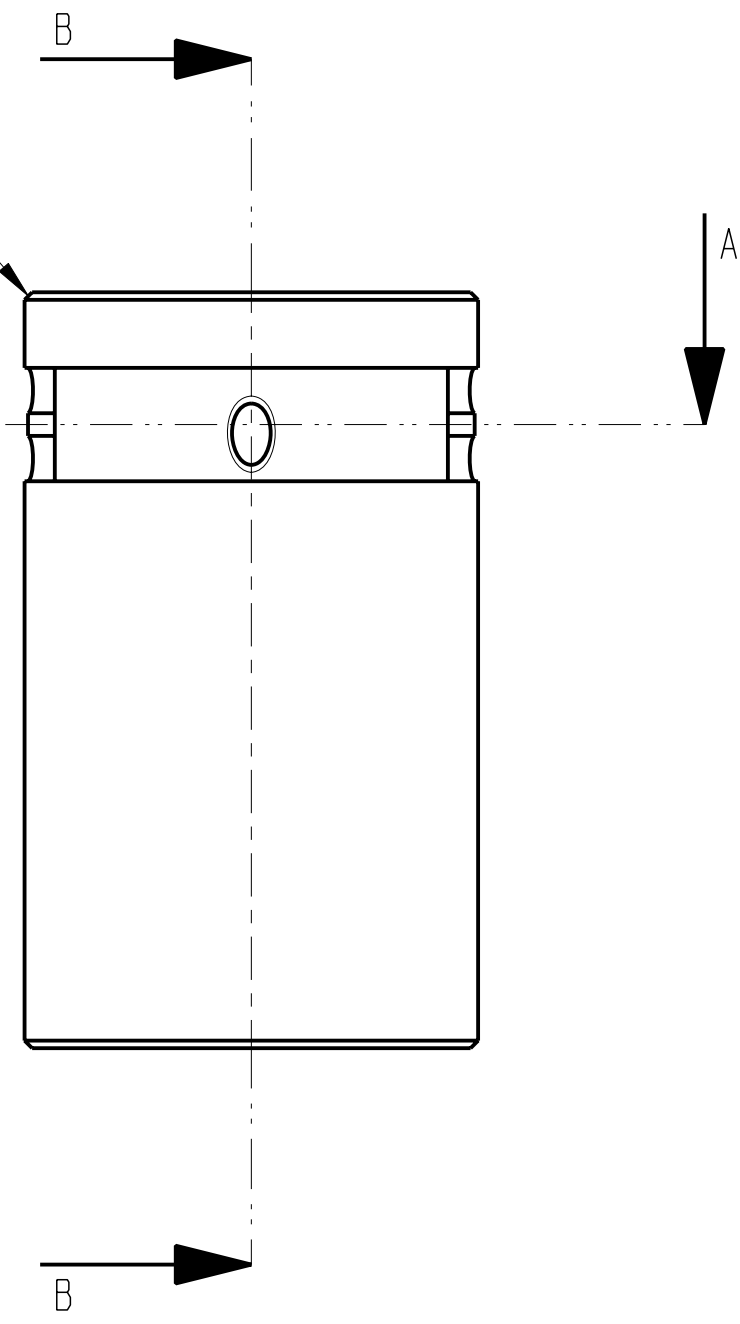
3D VIEW



SECTION B-B

1 X 45°  
2 PLACES

TAP 1 HOLE FOR  
FOR 1/4-20 UNC  
HELICOILS THRU;  
HELICOILS NOT  
TO BE FITTED



NOTES: (UNLESS OTHERWISE SPECIFIED)		DIMENSIONS ARE IN mm (INCHES)		TOLERANCES:	
1.	REMOVE ALL SHARP EDGES, R.02 MIN.	X.XX ± 0.2		ANGULAR ± 0.25°	
2.	DO NOT SCALE FROM DRAWING.				
3.	ALL MACHINING FLUIDS SHALL BE WATER SOLUBLE AND FREE OF SULFUR, CHLORINE AND SILICONE, SUCH AS CINCINNATI MILACRON'S CIMTECH 410 (STAINLESS STEEL)				
4.	SCRIBE, ENGRAVE OR STAMP DRAWING PART NUMBER ON NOTED SURFACE OF PART AND A THREE DIGIT SERIAL NUMBER. SERIAL NUMBERS START AT 001 FOR THE FIRST PART AND PROCEED CONSECUTIVELY. USE .07" HIGH CHARACTERS. EXAMPLE: D020188-001. A VIBRATORY TOOL MAY BE USED.				
FINISH: CLEAN, GREASE FREE		MATERIAL: ST. STEEL 304/316		NEXT ASSY: PENRE ETM QUAD N-PTYPE	
Ra = 1.6		PART NAME: PEN RE PITCH MASS (PITCH MASS)		SUB-SYSTEM: SUS	
DRAWN: J O'DELL 18/SEP/06		CHECKED: AJB 5MAY08		APPROVED: AJB 18/JULY/08	
SCALE: 1:1		PROJECTION:		SHEET 1 OF 1	

CALIFORNIA INSTITUTE OF TECHNOLOGY  
GLASGOW UNIVERSITY GEO 600 GROUP  
RUTHERFORD APPLETON LABORATORIES

SYSTEM: **ADVANCED LIGO**

PART NAME: **PEN RE PITCH MASS (PITCH MASS)**

DRG. NO.: **D060353**

REV: **F.**