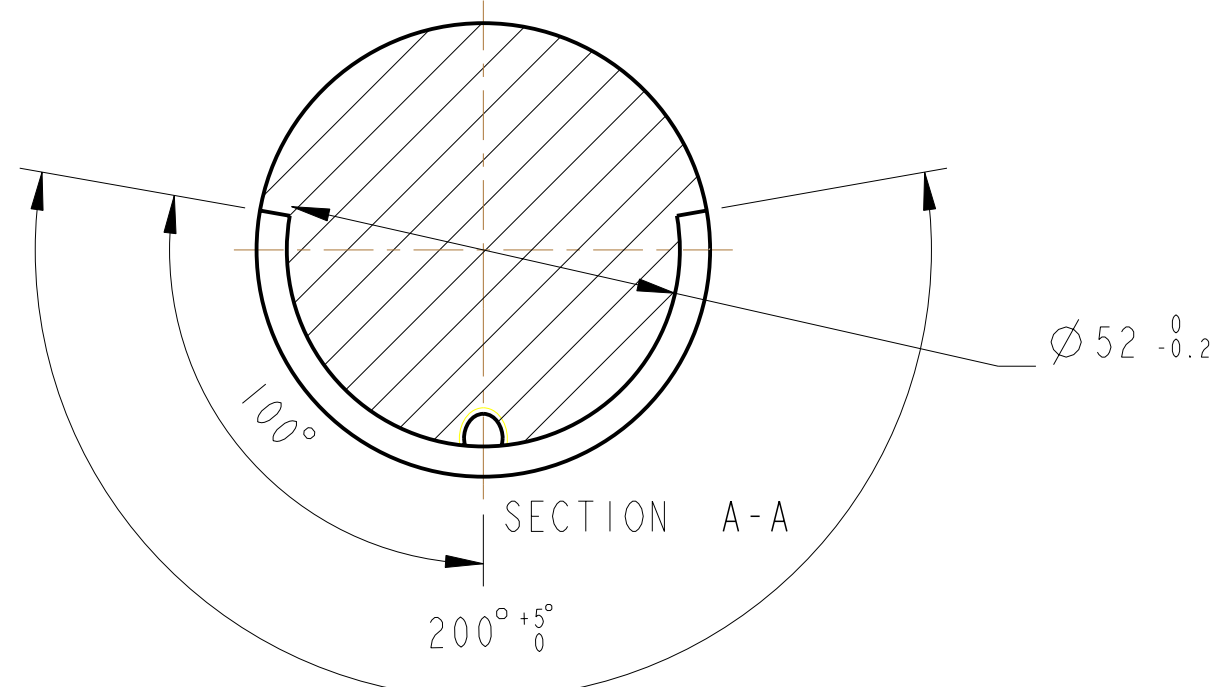
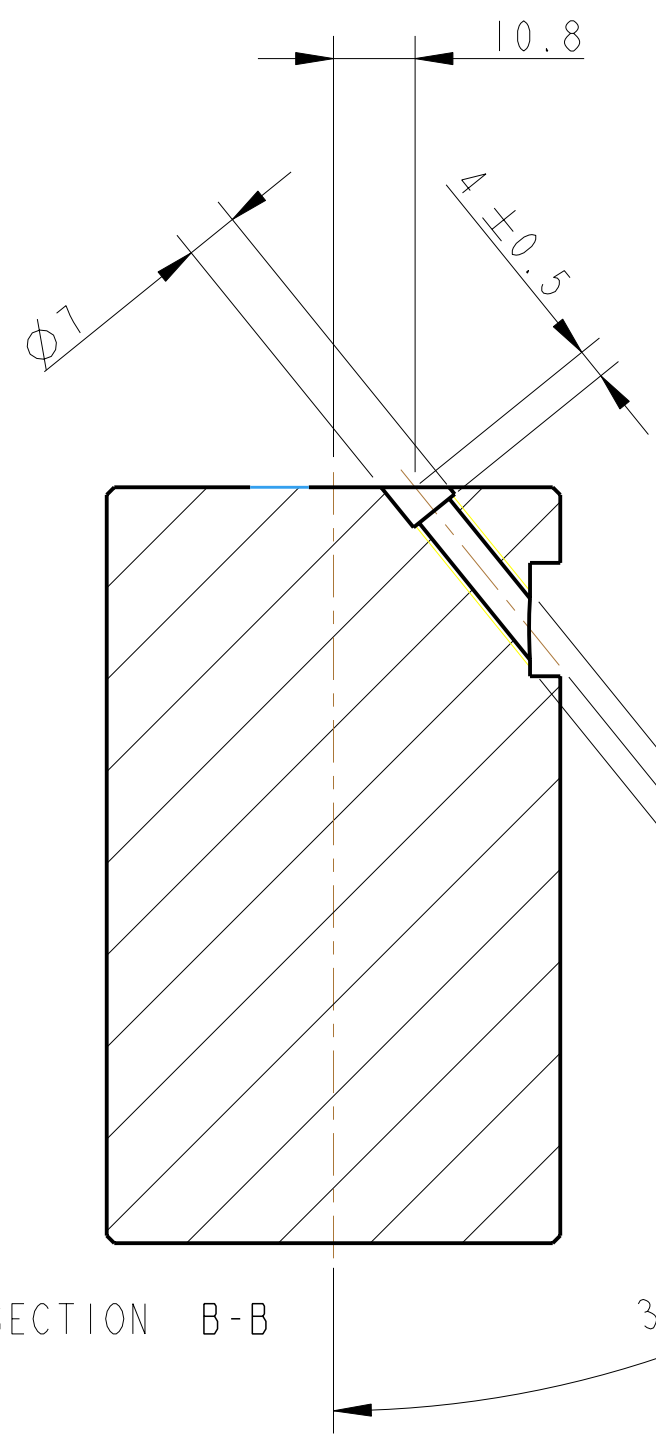
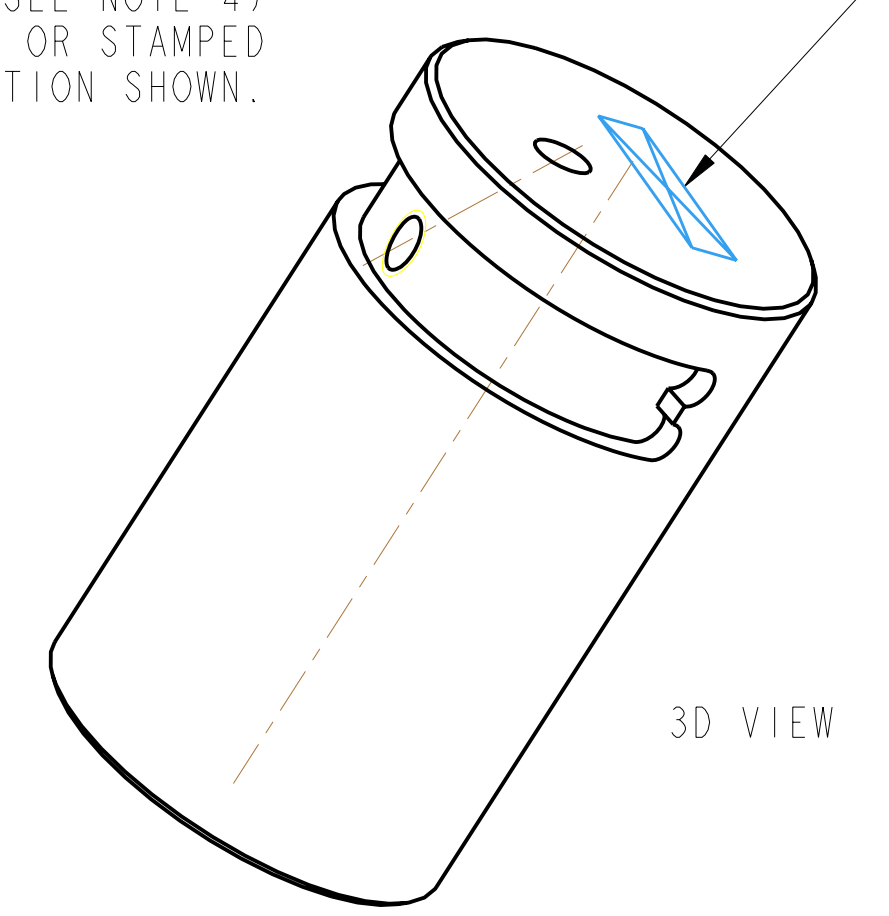


REV.	DATE	DCN #	DRAWING TREE #
A	15/OCT/06	E060240	
B	20/DEC/07	E060240-B	
F	21/JULY/08	E080370	

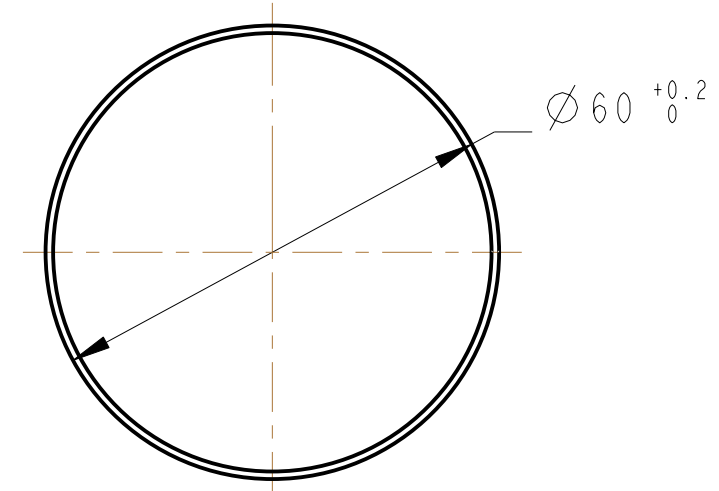
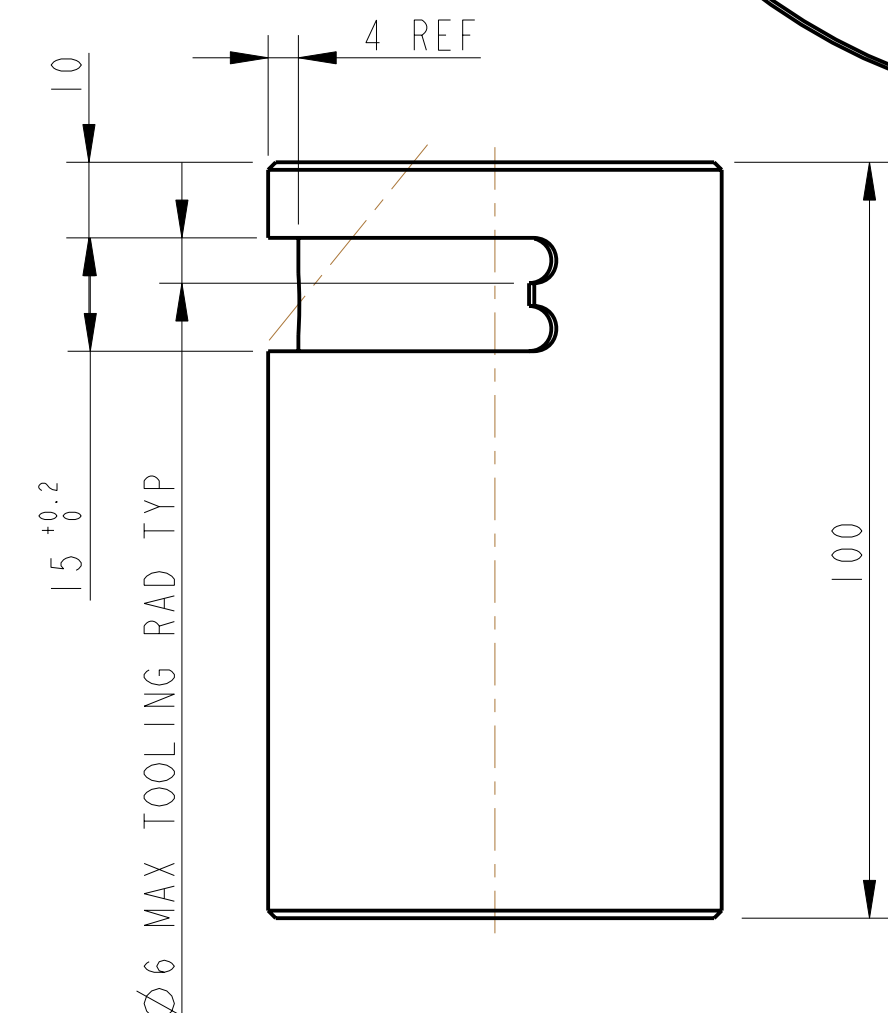
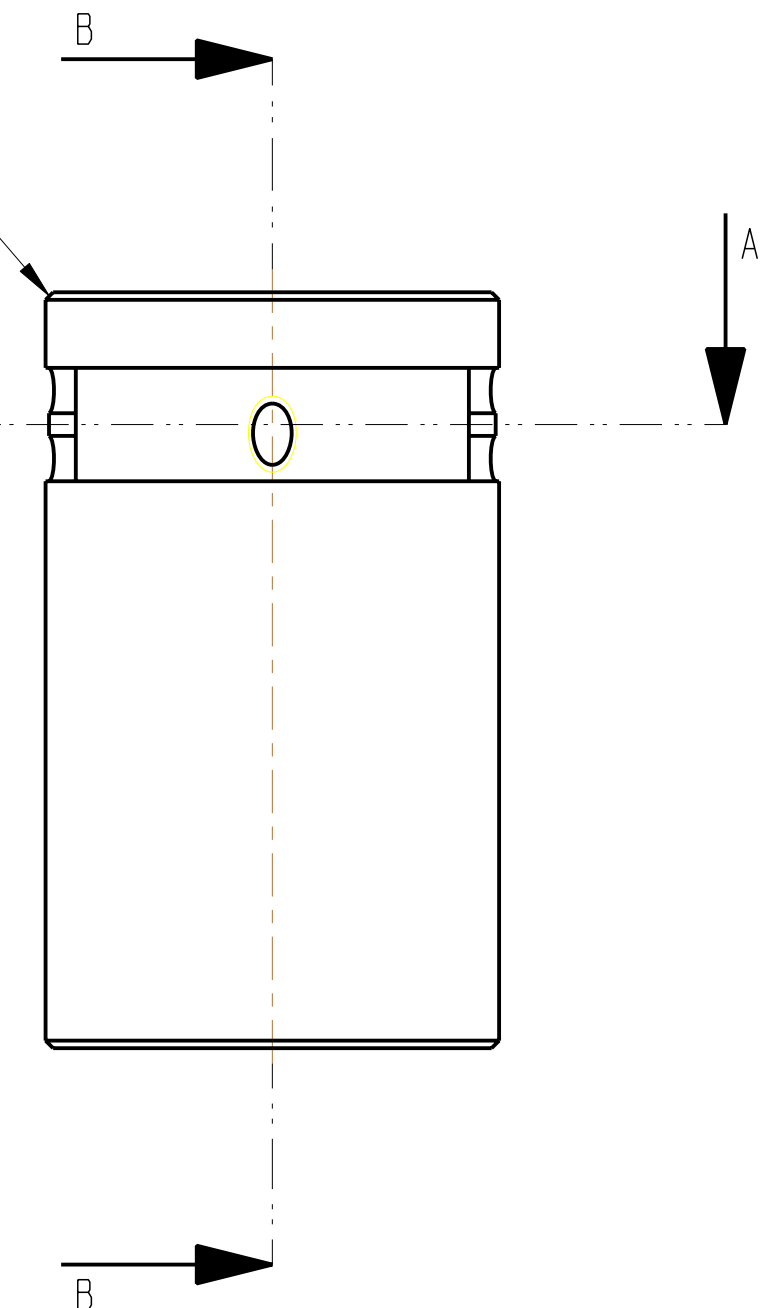


PART NO. (SEE NOTE 4)  
TO BE ETCHED OR STAMPED  
IN APPROX POSITION SHOWN.



1 X 45°  
2 PLACES

TAP 1 HOLE FOR  
FOR 1/4-20 UNC  
HELICOILS THRU;  
HELICOILS NOT  
TO BE FITTED



NOTES: (UNLESS OTHERWISE SPECIFIED)				DIMENSIONS ARE IN mm (INCHES)		CALIFORNIA INSTITUTE OF TECHNOLOGY MASSACHUSETTS INSTITUTE OF TECHNOLOGY RUTHERFORD APPLETON LABORATORIES
1. REMOVE ALL SHARP EDGES, R. 0.2 MIN.	2. DO NOT SCALE FROM DRAWING.	3. ALL MACHINING FLUIDS SHALL BE WATER SOLUBLE AND FREE OF SULFUR, CHLORINE AND SILICONE, SUCH AS CINCINNATI MILACRON'S CIMTECH 410 (STAINLESS STEEL)	4. SCRIBE, ENGRAVE OR STAMP DRAWING PART NUMBER ON NOTED SURFACE OF PART AND A THREE DIGIT SERIAL NUMBER. SERIAL NUMBERS START AT 001 FOR THE FIRST PART AND PROCEED CONSECUTIVELY. USE .07" HIGH CHARACTERS. EXAMPLE: D020188-001. A VIBRATORY TOOL MAY BE USED.	X.XX ± 0.2 ANGULAR ± 0.25°	MATERIAL: ST. STEEL 304/316 FINISH: CLEAN, GREASE FREE Ra = 1.6	
				DRAWN: J O'DELL 18/SEP/06 CHECKED: MB 15/MAR/10 APPROVED: JOD 15/MAR/10	DATE: 18/SEP/06 DATE: 15/MAR/10 DATE: 15/MAR/10	DRG. NO. <b>D060353</b> SCALE: 1:1 PROJECTION:  SHEET 1 OF 1