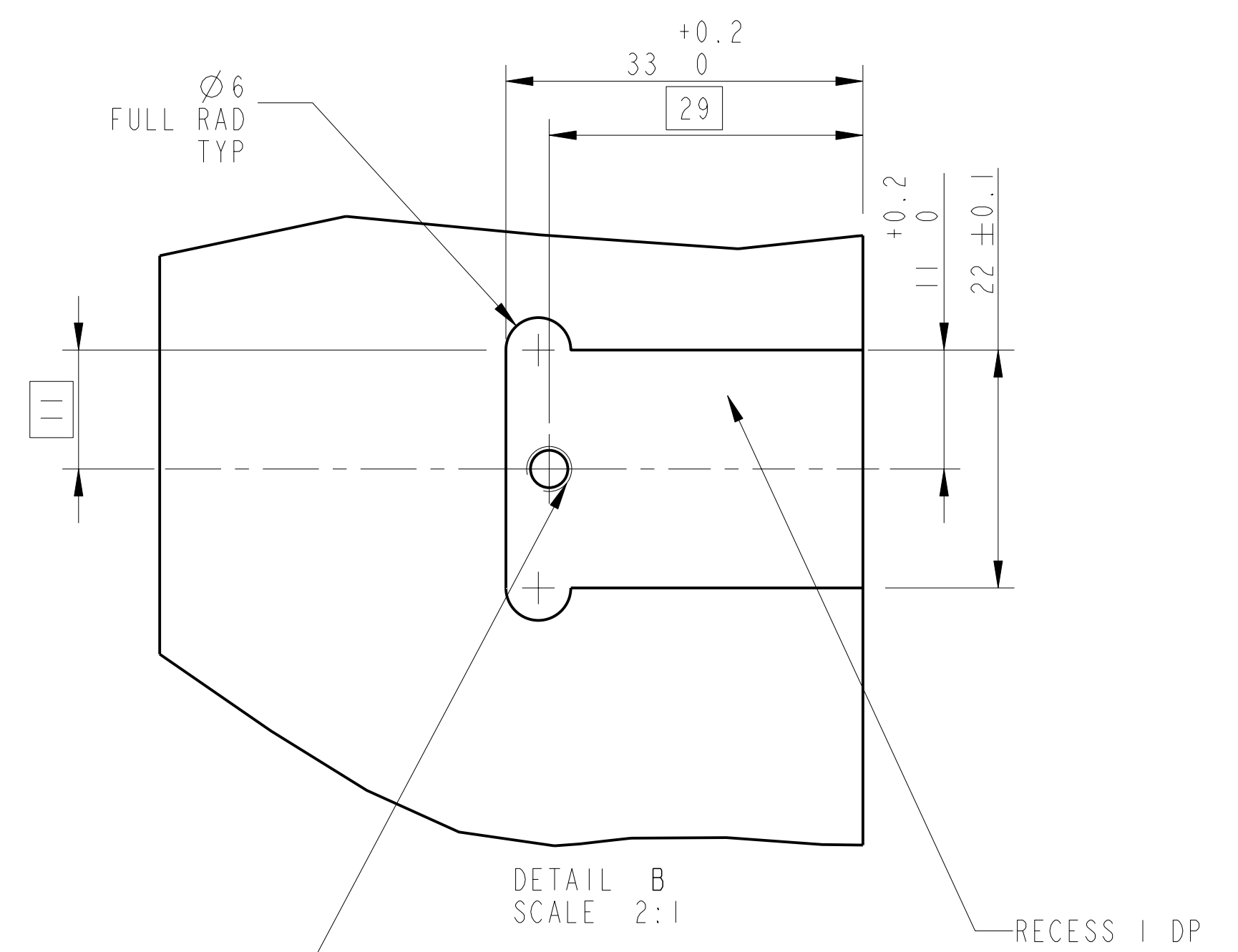
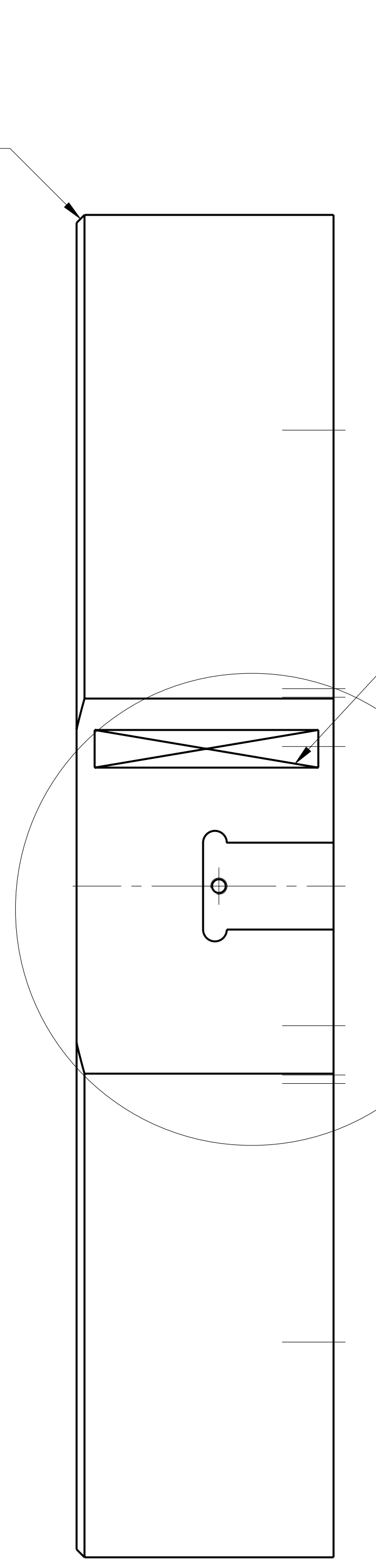
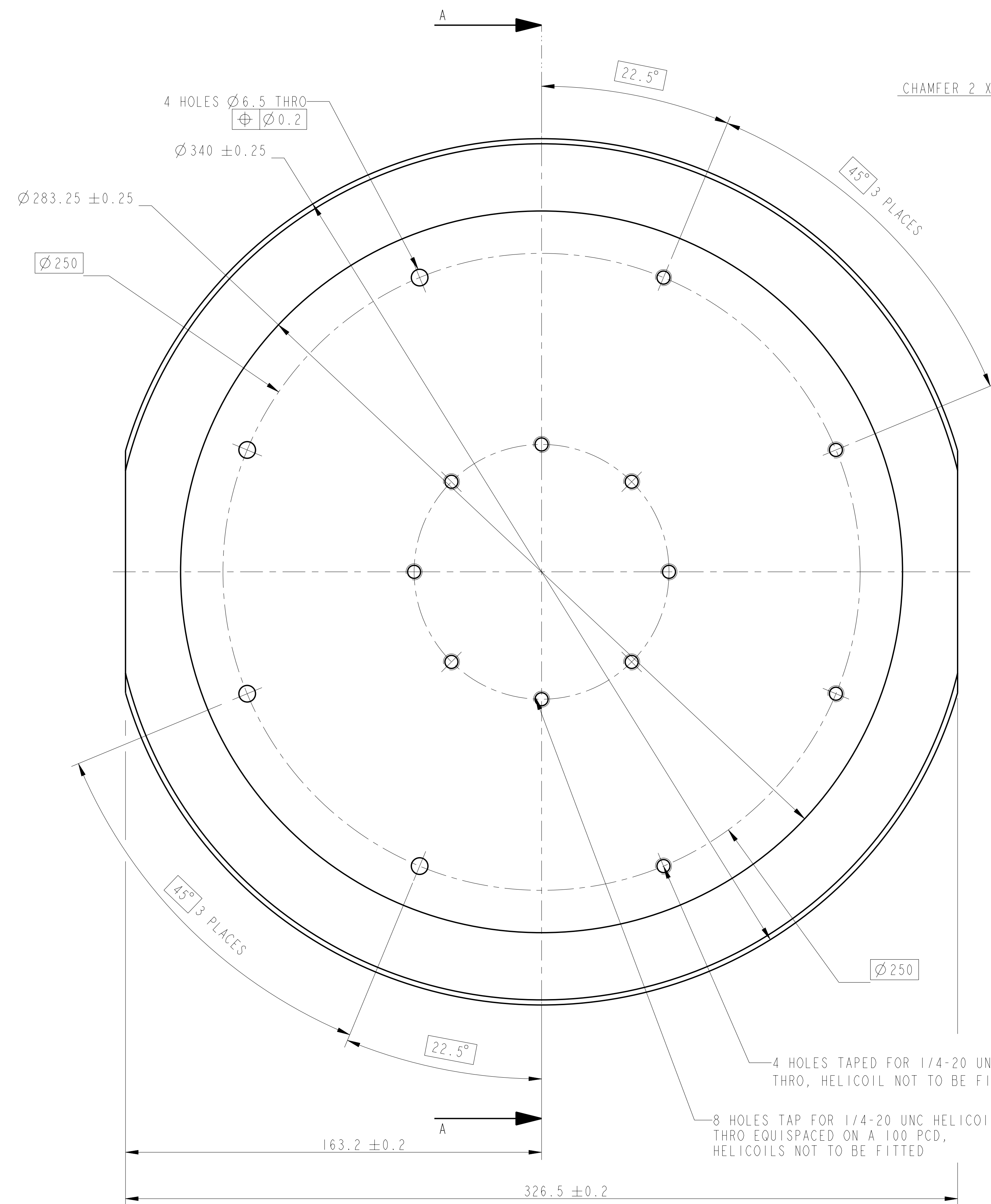


SECTION A-A



PART NO. SEE NOTE 4

1 HOLE, TAP FOR 8-32 UNC HELICOIL 1.5 DP DRILL Ø3 THRO ± 0.2

SEE DETAIL B

| | | | |
|--|---|--|---|
| NOTES: (UNLESS OTHERWISE SPECIFIED) | | CALIFORNIA INSTITUTE OF TECHNOLOGY MASSACHUSETTS INSTITUTE OF TECHNOLOGY OP. GLASGOW UNIVERSITY ICF GROUP RUTHERFORD APPLION LABORATORIES | |
| 1. REMOVE ALL SHARP EDGES. R.02 MIN. | 2. DO NOT SCALE FROM DRAWING. | DIMENSIONS ARE IN mm (INCHES) TOLERANCES: | SYSTEM: ADVANCED LIGO |
| 3. ALL MACHINING FLUIDS SHALL BE WATER SOLUBLE AND FREE OF SULFUR, CHLORINE AND SILICONE, SUCH AS CINCINNATI MILACRON'S CMTTECH 410 (STAINLESS STEEL). | 4. SCRIBE, ENGRAVE OR STAMP DRAWING PART NUMBER ON NOTED SURFACE OF PART AND A THREE DIGIT SERIAL NUMBER. SERIAL NUMBERS START AT 001 FOR THE FIRST PART AND PROCEED CONSECUTIVELY. USE 07* HIGH CHARACTERS. EXAMPLE: 000100-001 - A VIBRATOR TOOL MAY BE USED. | MATERIAL: ST STEEL | SUB-SYSTEM: SUS |
| | | FINISH: CLEAN AND DEGREASED Ra: 1.6 | NEXT ASSY: ASSEMBLY MASSES QUAD N-PTYPE |
| | | DRAWN: I. WILMOT 29/SEP/06 | PART NAME: HALF MASS |
| | | CHECKED: J. O'D. 30/SEP/06 | DRG. NO.: D060357 |
| | | APPROVED: --- | SCALE: 1:1 PROJECTION: 1ST |