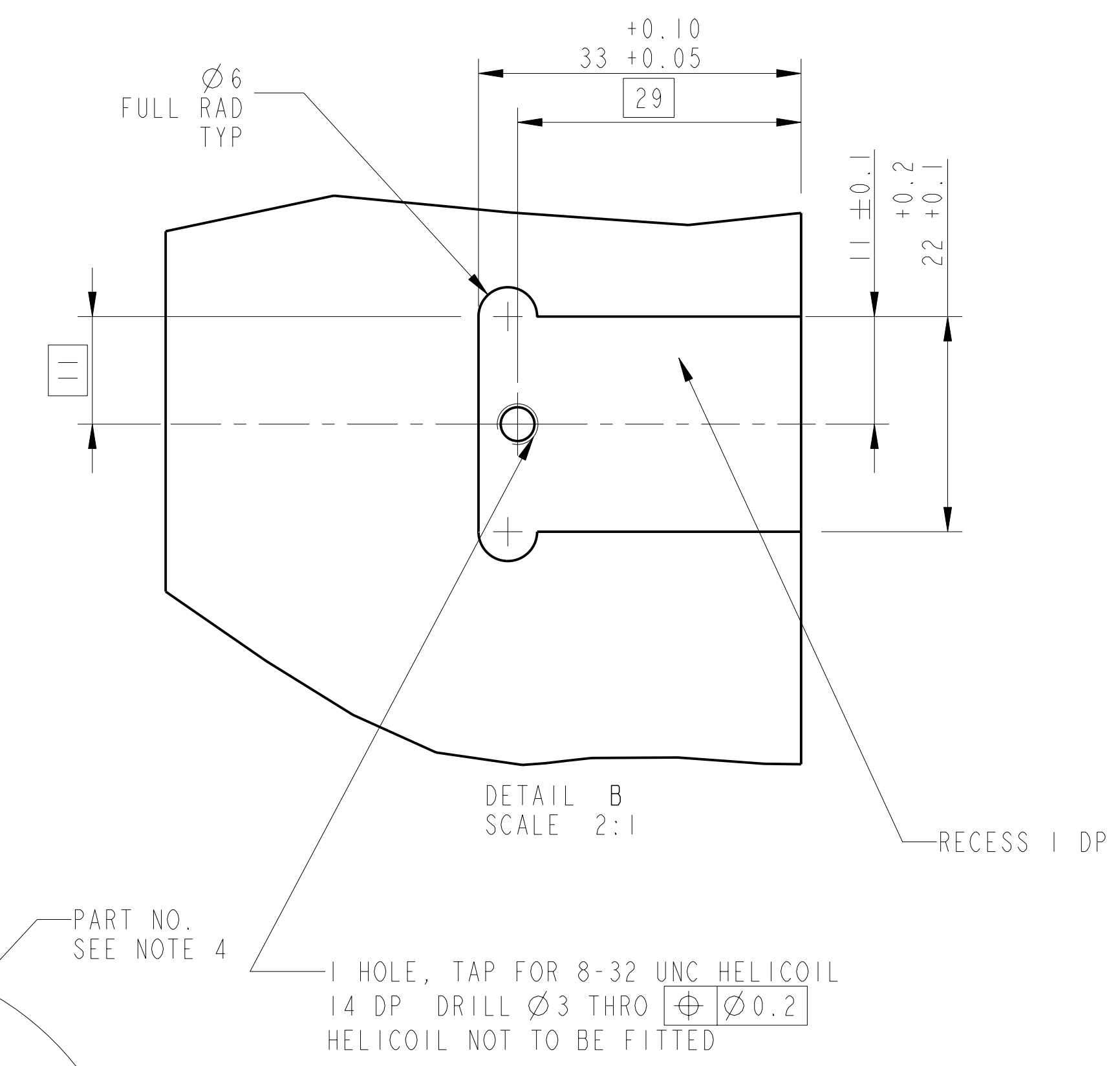
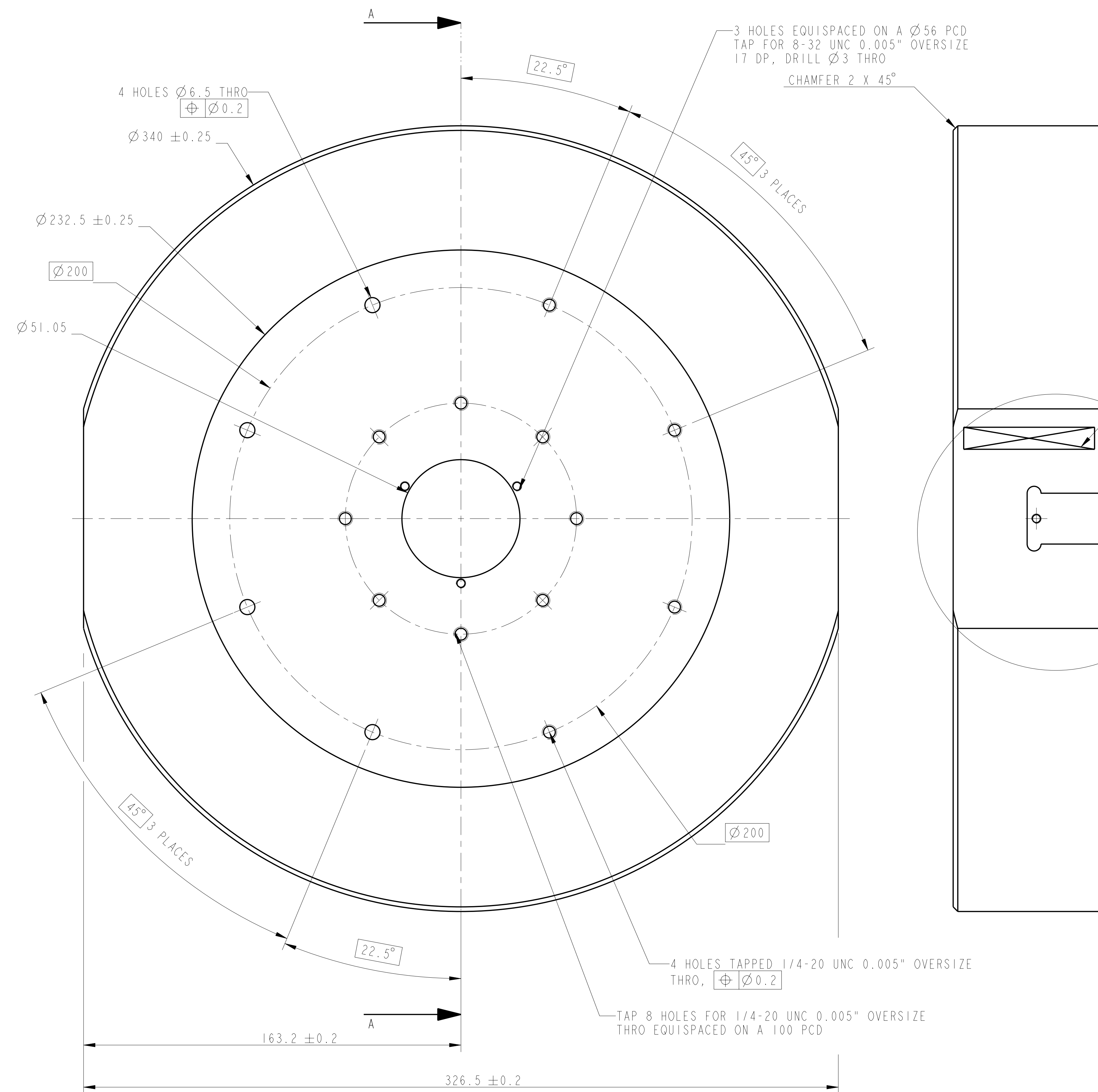
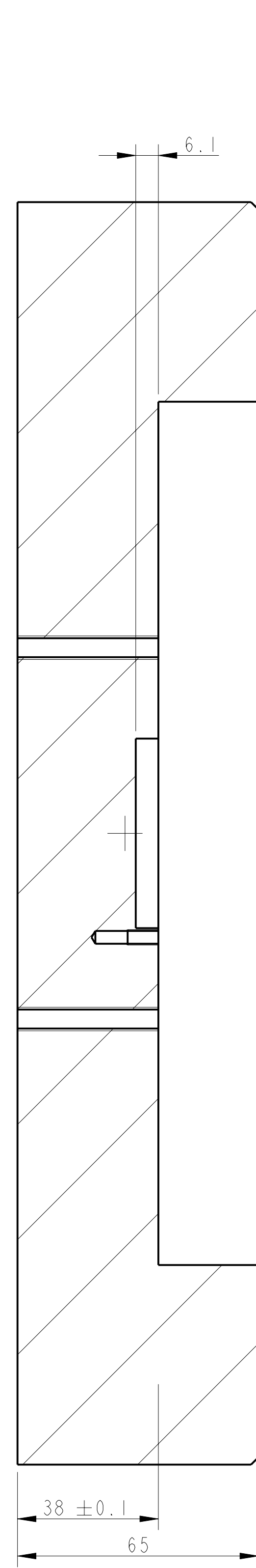


REV.	DATE	DCN #	DRAWING TREE #
A	15/OCT/06	E060240	
B	20/DEC/07	E060240-B	
F	21/JULY/08	E080370	



NOTES: (UNLESS OTHERWISE SPECIFIED)

- REMOVE ALL SHARP EDGES. R0.2 MIN.
- DO NOT SCALE FROM DRAWING.
- ALL MACHINING FLUIDS SHALL BE WATER SOLUBLE AND FREE OF SULFUR, CHLORINE AND SILICONE. SUCH AS CINCINNATI MILACRON'S CIMTECH 410 (STAINLESS STEEL).
- SCRIBE, ENGRAVE OR STAMP DRAWING PART NUMBER ON NOTED SURFACE OF PART AND A THREE DIGIT SERIAL NUMBER. SERIAL NUMBERS START AT 001 FOR THE FIRST PART AND PROCEED CONSECUTIVELY. USE 07\* HIGH CHARACTERS. EXAMPLE: D060357-001 - A VIBRATOR TOOL MAY BE USED.

DIMENSIONS ARE IN mm (INCHES) TOLERANCES:

XX.XX ±0.2MM (±) ANGULAR ±0.25°

MATERIAL: AL ALLOY SURF

FINISH: CLEAN AND DEGREASED √(µm) Ra = 1.6

NAME	DATE	SIZE
DRAWN	1 WILMOT	29/SEP/06
CHECKED	AJB	27/MAY/08
APPROVED	AJB	18/JULY/08

SYSTEM: ADVANCED LIGO  
SUB-SYSTEM: SUS  
NEXT ASSY: ASSEMBLY MASSES QUAD N-PTYPE  
PART NAME: HALF MASS (DUMMY HALF REACTION MASS)  
DRG. NO.: D060357  
SCALE: 1:1 PROJECTION: 1ST