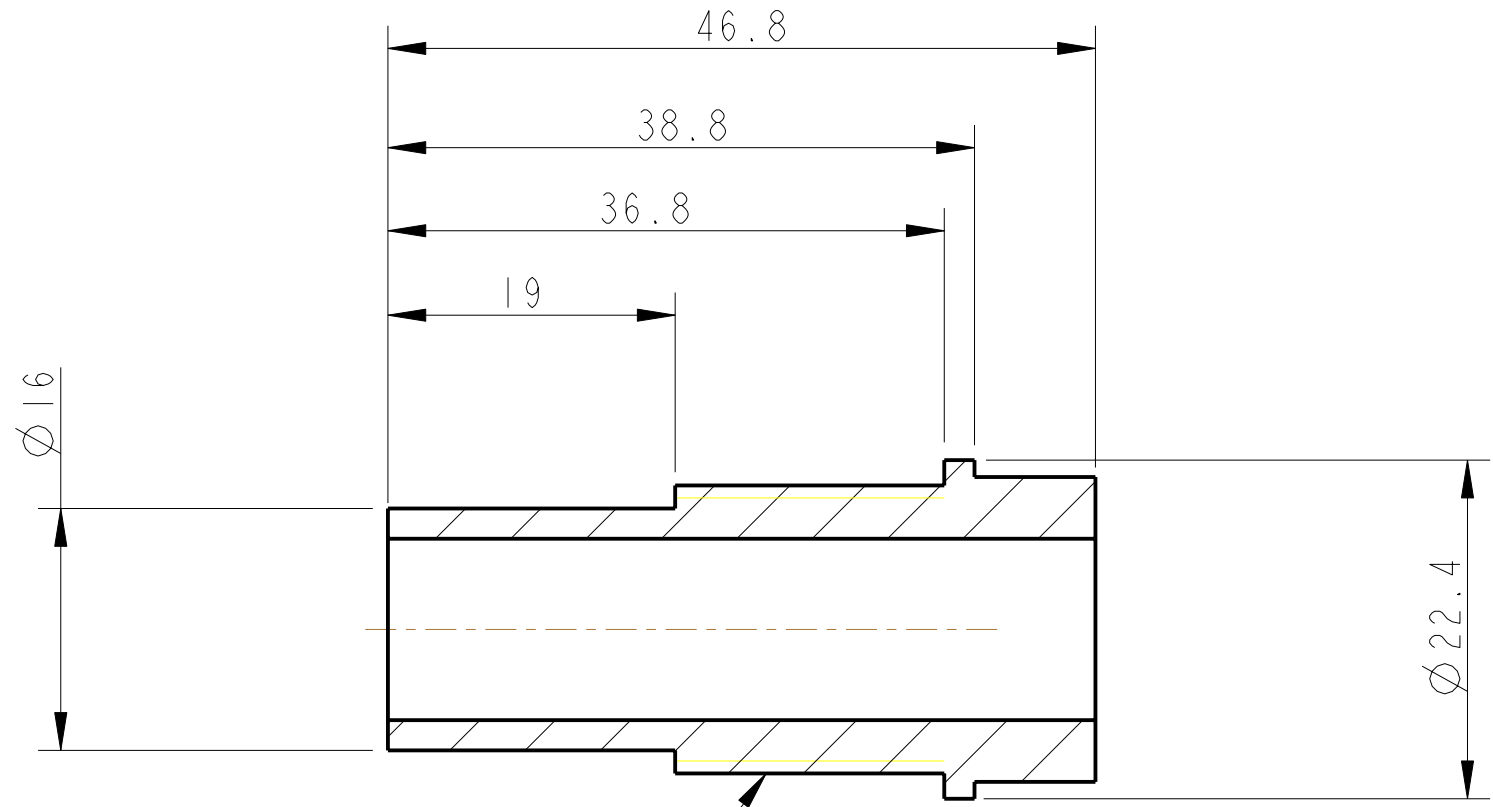
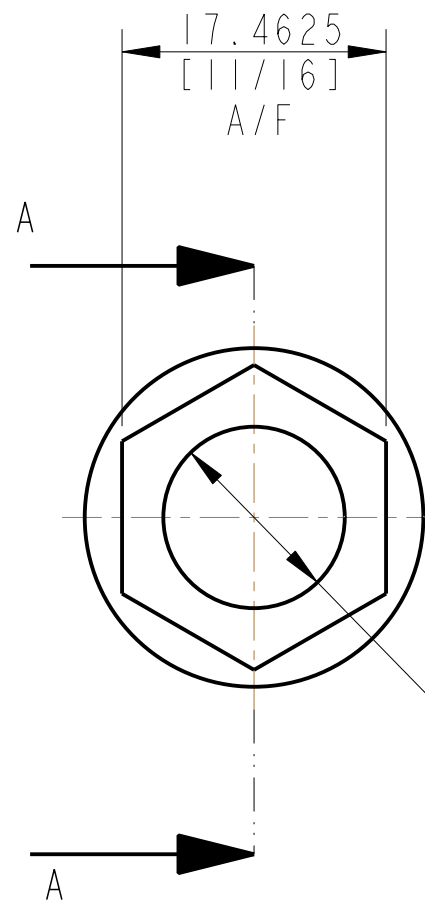


REV.	DATE	DCN #	DRAWING TREE #
A	18/OCT/06	E060247	.
B	19/DEC/07	E060247-B	.



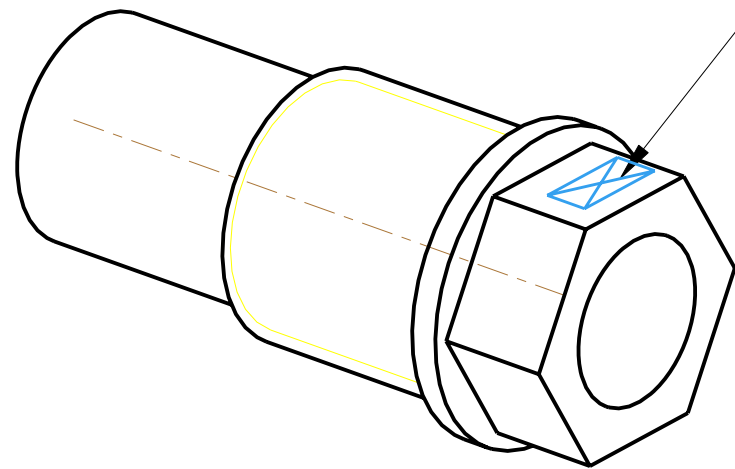
SECTION A-A

3/4-10 UNC THREAD



1-HOLE Ø12<sup>+0.2</sup><sub>0</sub>  
THRU'

PART NO. (SEE NOTE 4) TO  
BE ETCHED OR STAMPED IN  
APPROX POSITION SHOWN.



NOTES: (UNLESS OTHERWISE SPECIFIED)		CALIFORNIA INSTITUTE OF TECHNOLOGY MASSACHUSETTS INSTITUTE OF TECHNOLOGY 1GR, GLASGOW UNIVERSITY GEO 600 GROUP RUTHERFORD APPLETON LABORATORIES	
1. REMOVE ALL SHARP EDGES, R.02 MIN.	DIMENSIONS ARE IN mm [INCHES] TOLERANCES: X.XX ±0.2 mm ANGULAR ±0.25 °	SYSTEM	aLIGO
2. DO NOT SCALE FROM DRAWING.		SUB-SYSTEM	SUS
3. ALL MACHINING FLUIDS SHALL BE WATER SOLUBLE AND FREE OF SULFUR, CHLORINE AND SILICONE, SUCH AS CINCINNATI MILACRON'S CIMTECH 410 (STAINLESS STEEL)	MATERIAL: OFHC COPPER	NEXT ASSY	UI MASS QUAD
4. SCRIBE, ENGRAVE OR STAMP DRAWING PART NUMBER ON NOTED SURFACE OF PART AND A THREE DIGIT SERIAL NUMBER. SERIAL NUMBERS START AT 001 FOR THE FIRST PART AND PROCEED CONSECUTIVELY. USE .07" HIGH CHARACTERS. EXAMPLE: D020188- 001. A VIBRATORY TOOL MAY BE USED.	FINISH: CLEAN & DE-GREASED √μm [μin] Ra = 1.6	PART NAME	UI MASS BLADE ECD
		SIZE	B
		DRG. NO.	D060381
		REV	H.
		SCALE	2:1
		PROJECTION	First Angle
		SHEET	1 OF 1