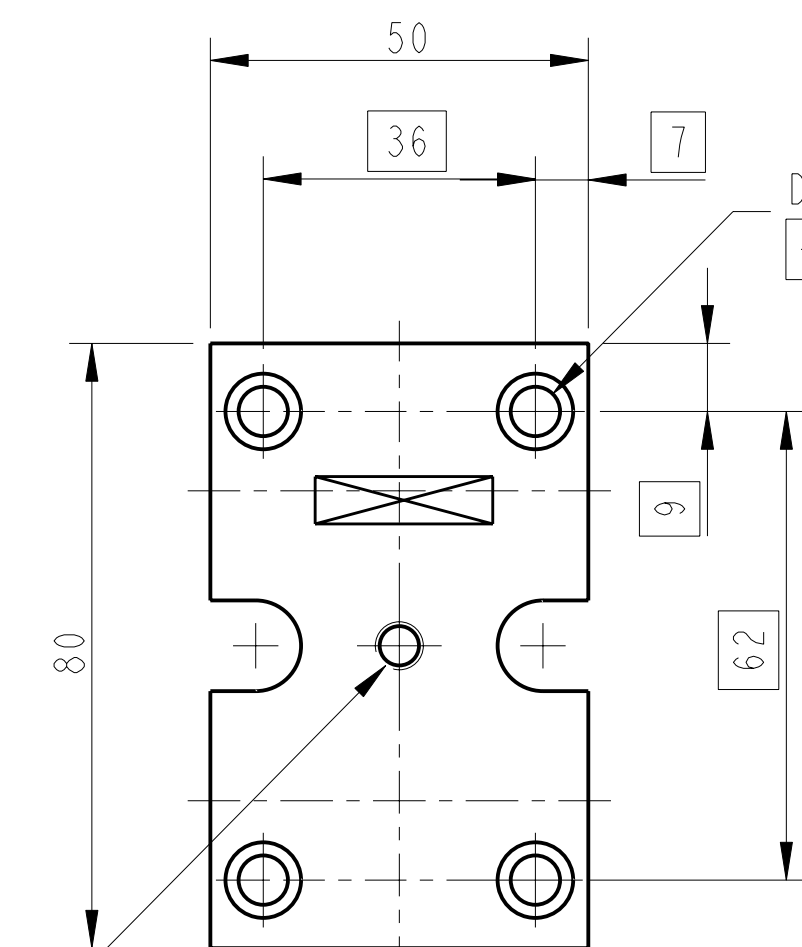
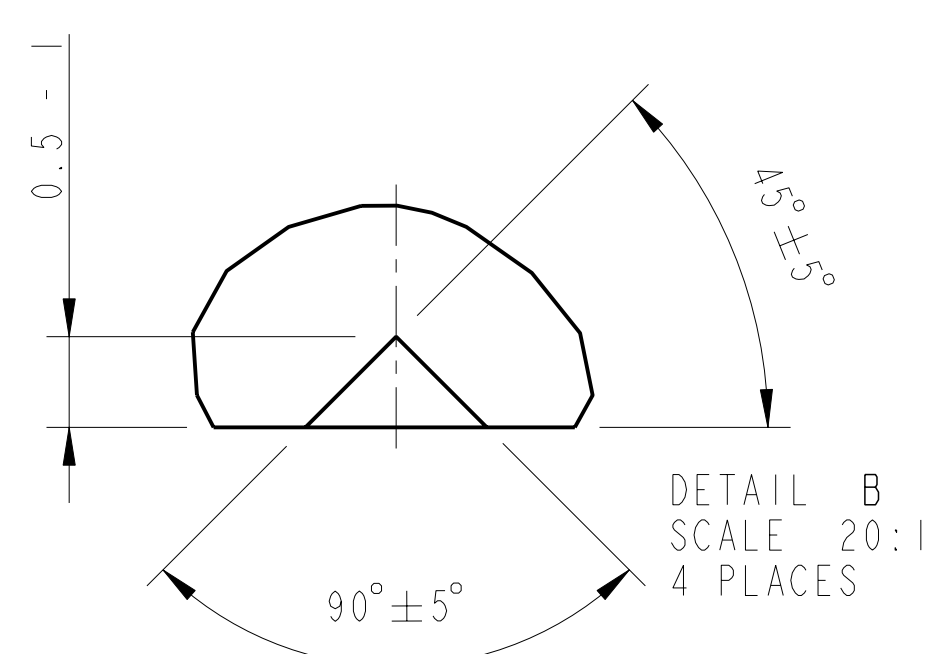
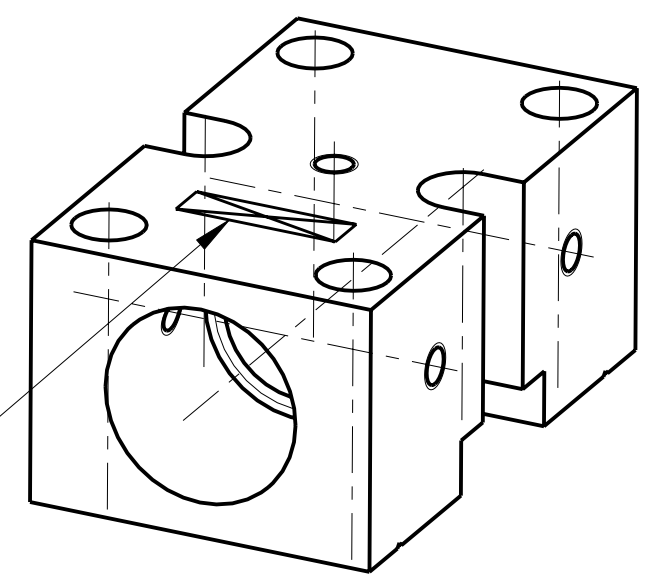


REV.	DATE	DCN #	DRAWING TREE #
A	9/OCT/06	E060248	

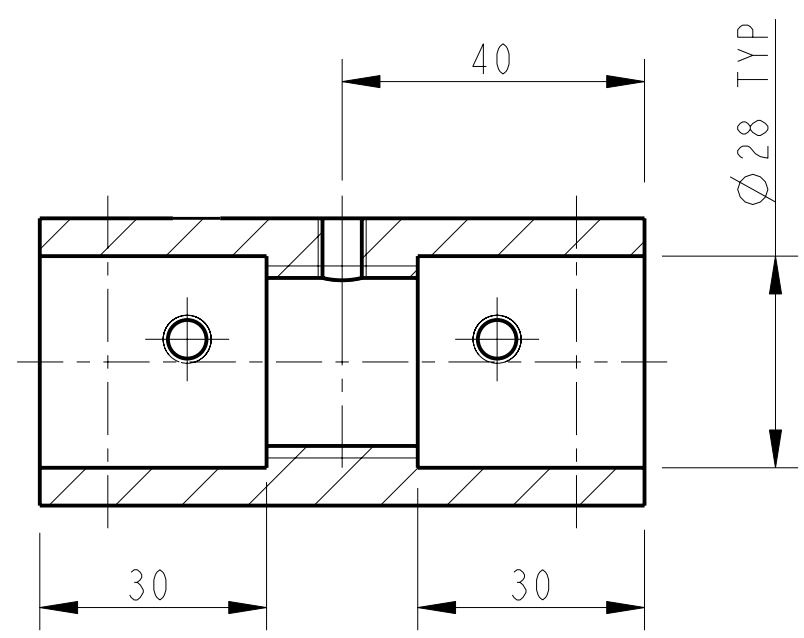


PART NO. (SEE NOTE 4) TO BE ETCHED OR STAMPED IN APPROX POSITION SHOWN.

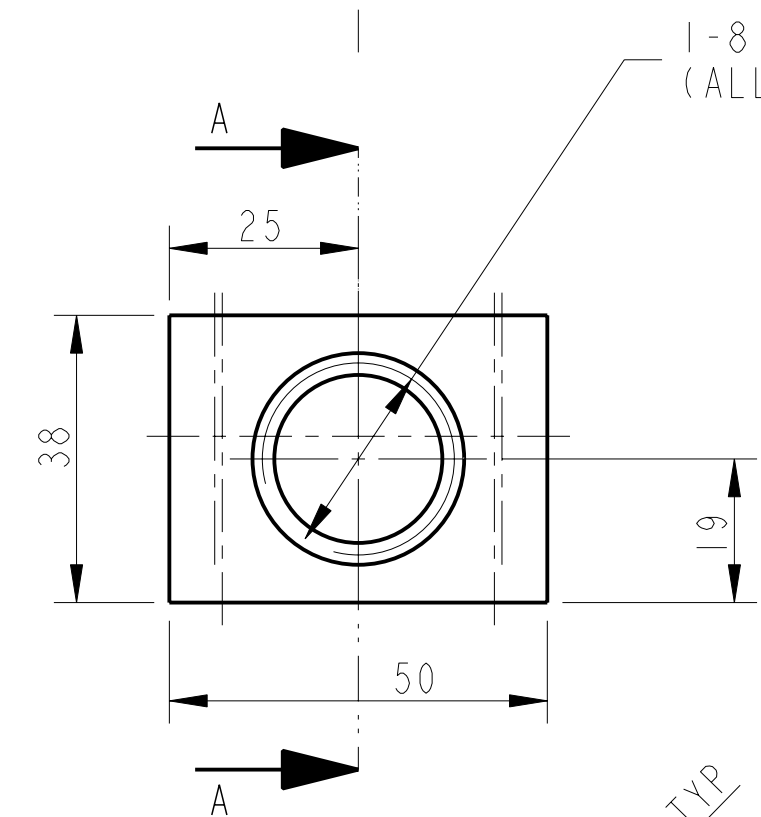


3D VIEW

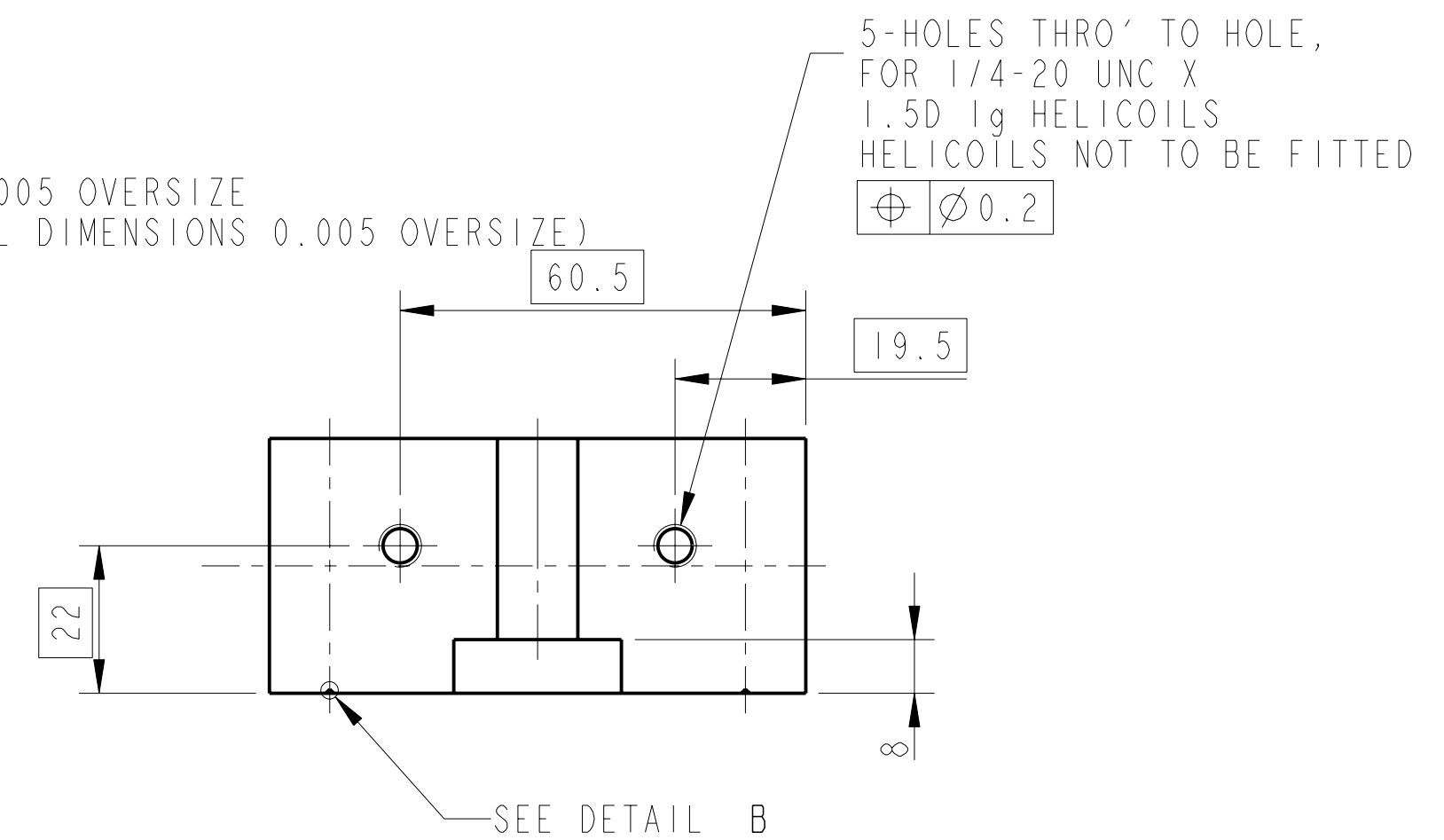
1-HOLE THRO' TO HOLE, FOR 1/4-20 UNC X 1.5D 1g HELICOILS HELICOILS NOT TO BE FITTED



SECTION A-A

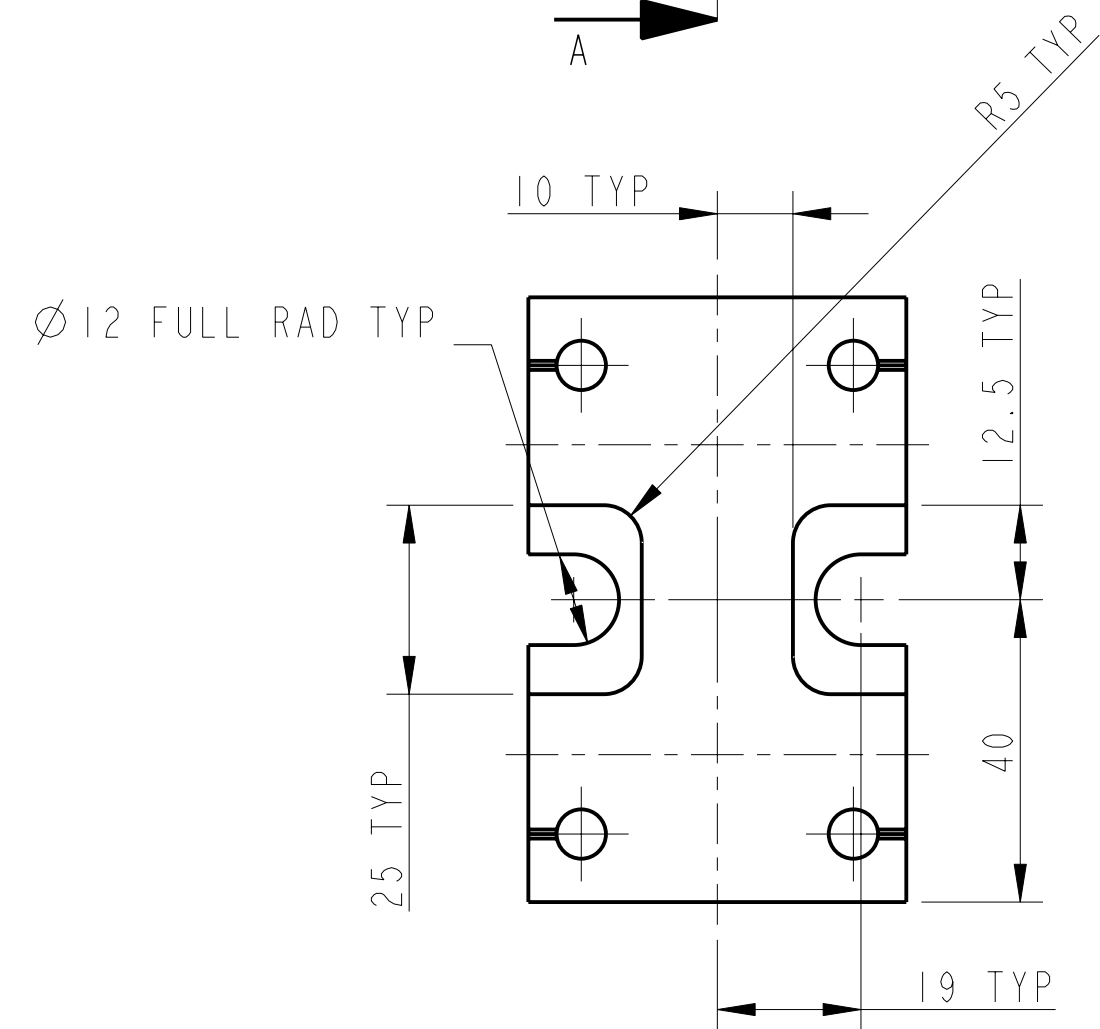


1-8 UNC 0.005 OVERSIZE (ALL RADIAL DIMENSIONS 0.005 OVERSIZE)



5-HOLES THRO' TO HOLE, FOR 1/4-20 UNC X 1.5D 1g HELICOILS HELICOILS NOT TO BE FITTED

SEE DETAIL B



NOTES: (UNLESS OTHERWISE SPECIFIED)		DIMENSIONS ARE IN mm (INCHES)		CALIFORNIA INSTITUTE OF TECHNOLOGY	
1. REMOVE ALL SHARP EDGES, R.02 MIN.		X.XX ± mm (INCHES)		MASSACHUSETTS INSTITUTE OF TECHNOLOGY	
2. DO NOT SCALE FROM DRAWING.		ANGULAR ±0.25°		RUTHERFORD APPLETON LABORATORIES	
3. ALL MACHINING FLUIDS SHALL BE WATER SOLUBLE AND FREE OF SULFUR, CHLORINE AND SILICONE, SUCH AS CINCINNATI MILACRON'S CIMTECH 410 (STAINLESS STEEL)		MATERIAL: AL ALLOY 5083		SYSTEM ADVANCED LIGO	
4. SCRIBE, ENGRAVE OR STAMP DRAWING PART NUMBER ON NOTED SURFACE OF PART AND A THREE DIGIT SERIAL NUMBER. SERIAL NUMBERS START AT 001 FOR THE FIRST PART AND PROCEED CONSECUTIVELY. USE .07" HIGH CHARACTERS. EXAMPLE: D020188-001. A VIBRATORY TOOL MAY BE USED.		FINISH: CLEAN, GREASE FREE Ra = 1.6		SUB-SYSTEM SUS	
		DRAWN: J O'DELL 27/OCT/05		NEXT ASSY TOP MASS QUAD N-PTYPE	
		CHECKED: IW 07/DEC/05		PART NAME PITCH ADJUSTER & MASS	
		APPROVED: IW 08/DEC/05		DRG. NO. D060398	
		SCALE: 1:1		SHEET 1 OF 1	