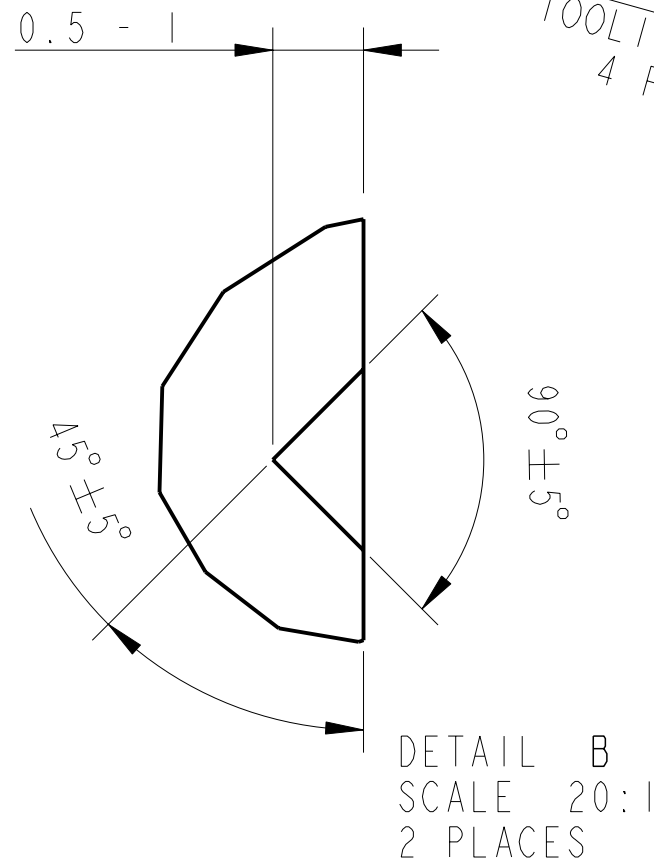
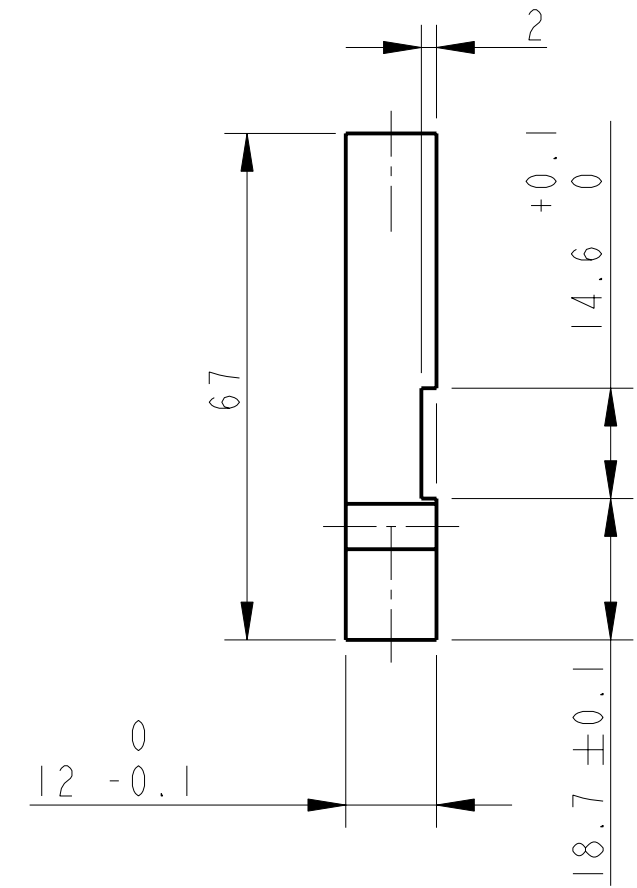
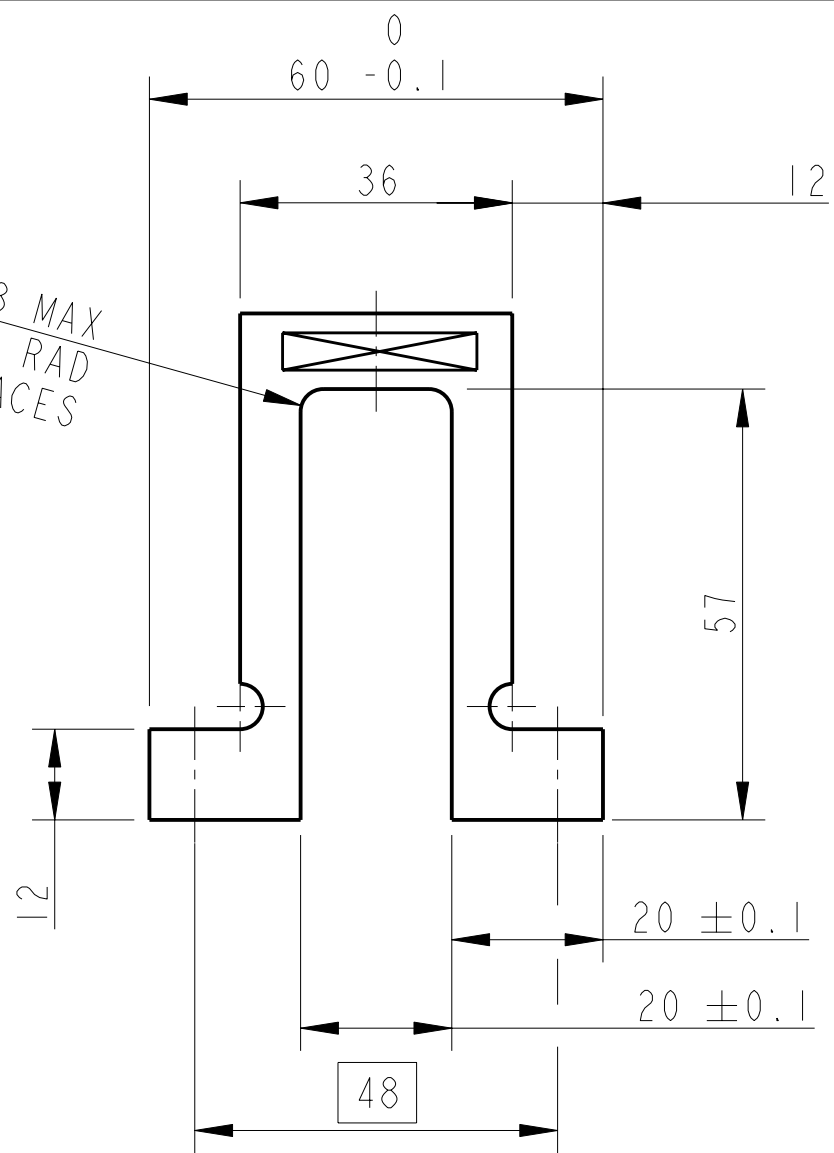


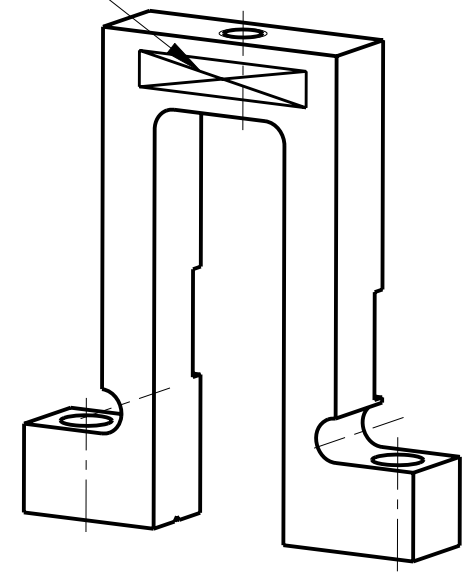
REV.	DATE	DCN #	DRAWING TREE #
A	18/OCT/06	E060247	.
B	19/DEC/07	E060247-B	.



R3 MAX
TOOLING RAD
4 PLACES

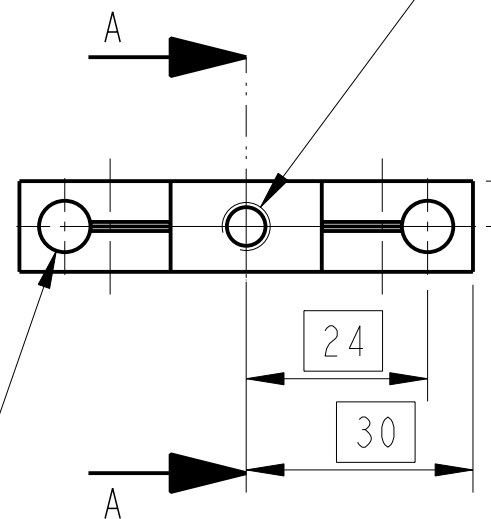
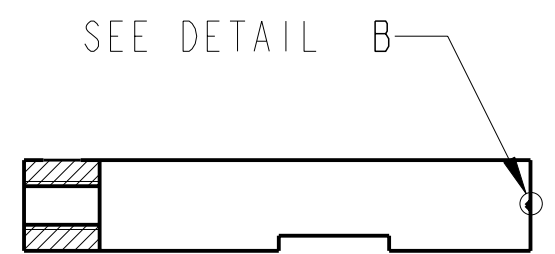


PART NO. (SEE NOTE 4)
TO BE ETCHED OR STAMPED
IN APPROX POSITION SHOWN



1-HOLE FOR HELICOIL 1/4-20 UNC X 1.5D 1g
THRU'
HELICOIL NOT TO BE FITTED.

⊕ ∅0.3



NOTES: (UNLESS OTHERWISE SPECIFIED)		CALIFORNIA INSTITUTE OF TECHNOLOGY MASSACHUSETTS INSTITUTE OF TECHNOLOGY 1GR, GLASGOW UNIVERSITY GEO 600 GROUP RUTHERFORD APPLETON LABORATORIES	
1. REMOVE ALL SHARP EDGES, R.02 MIN.	DIMENSIONS ARE IN mm [INCHES] TOLERANCES: X.XX ±0.2 mm ANGULAR ±0.25 °	SYSTEM ADVANCED LIGO	
2. DO NOT SCALE FROM DRAWING.		SUB-SYSTEM SUS	
3. ALL MACHINING FLUIDS SHALL BE WATER SOLUBLE AND FREE OF SULFUR, CHLORINE AND SILICONE, SUCH AS CINCINNATI MILACRON'S CIMTECH 410 (STAINLESS STEEL)	MATERIAL: AL ALLOY 5083	NEXT ASSY QUAD TOP MASS N-PTYPE	
4. SCRIBE, ENGRAVE OR STAMP DRAWING PARTNUMBER ON NOTED SURFACE OF PART AND A THREE DIGIT SERIAL NUMBER. SERIAL NUMBERS START AT 001 FOR THE FIRST PART AND PROCEED CONSECUTIVELY. USE .07" HIGH CHARACTERS. EXAMPLE: D020188- 001. A VIBRATORY TOOL MAY BE USED.	FINISH: CLEAN, GREASE FREE √μm [μin] Ra = 1.6	PART NAME STOP BRIDGE	
		SIZE B	DRG. NO. D060399
		SCALE 1:1	PROJECTION: SHEET 1 OF 1