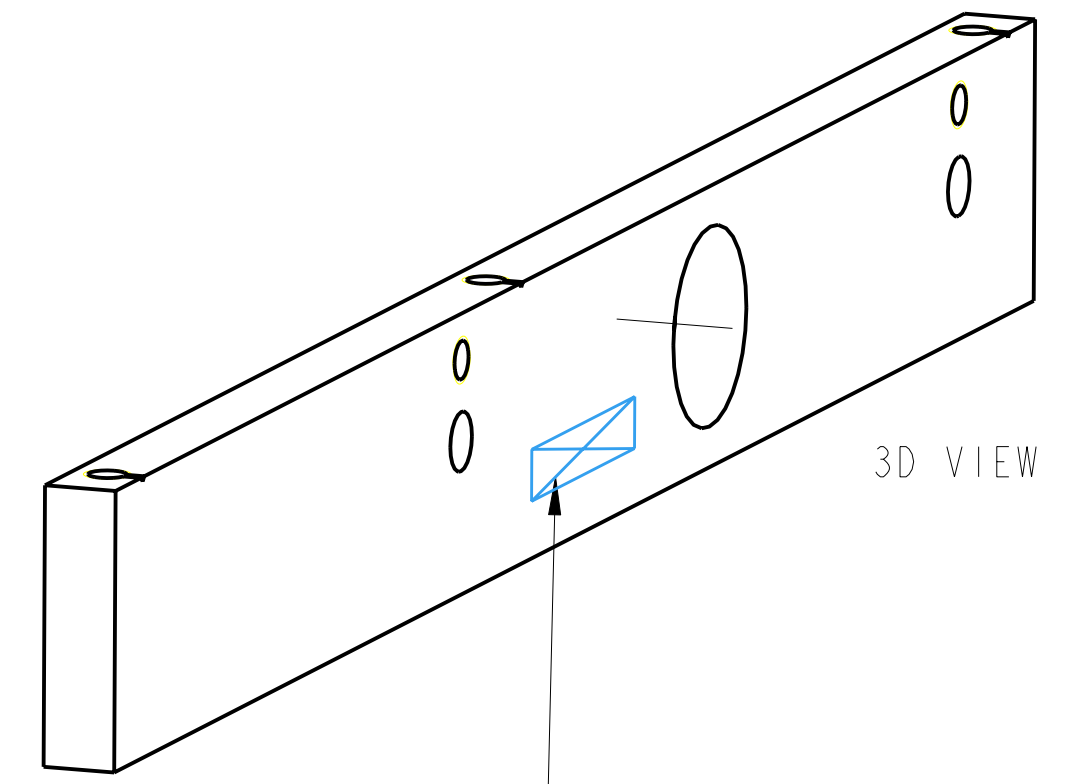
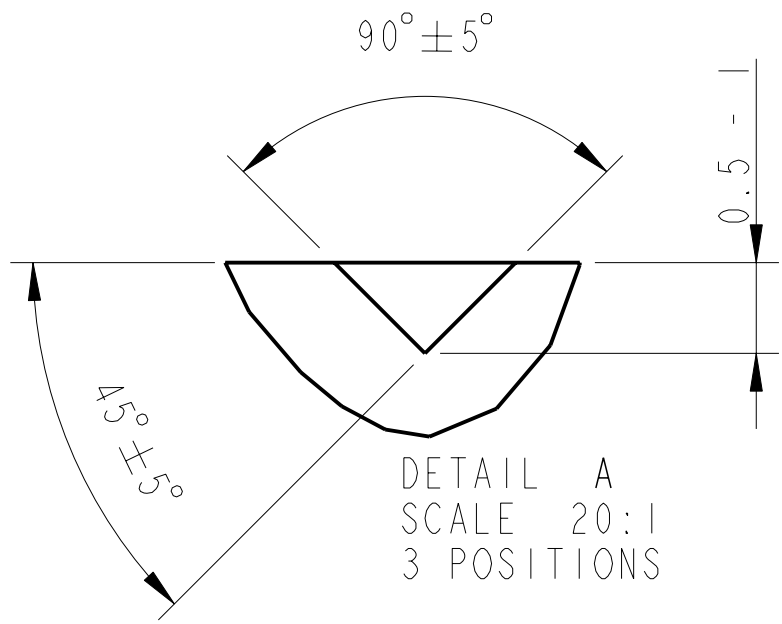
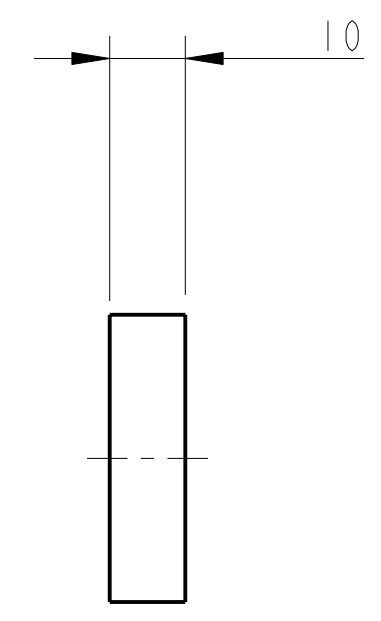
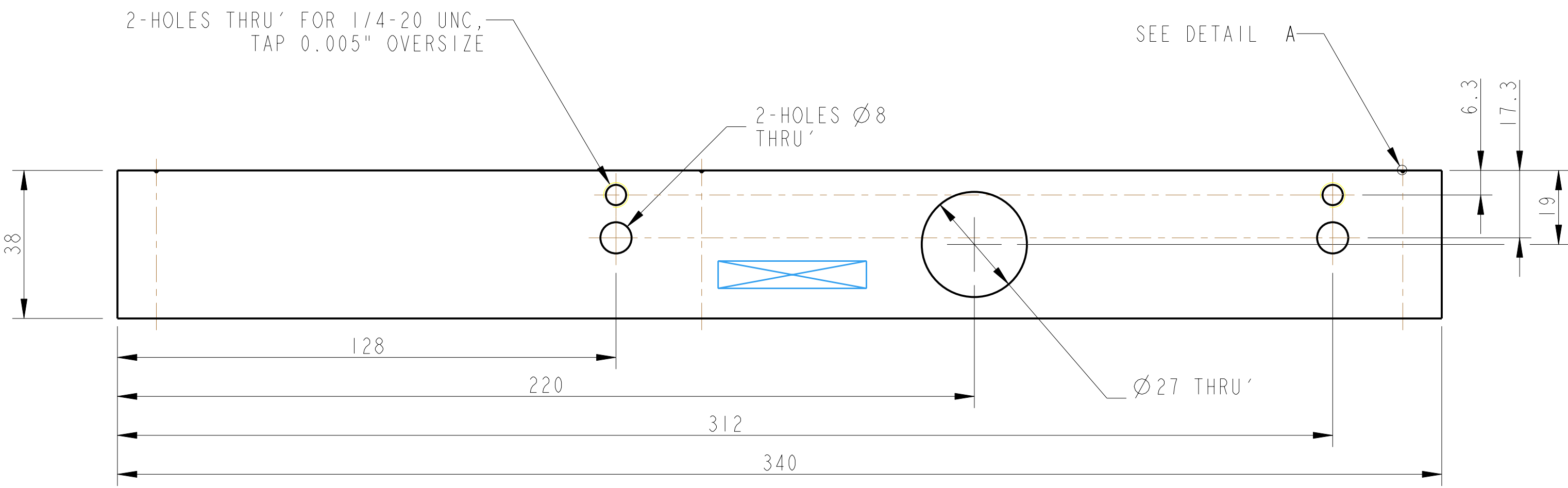
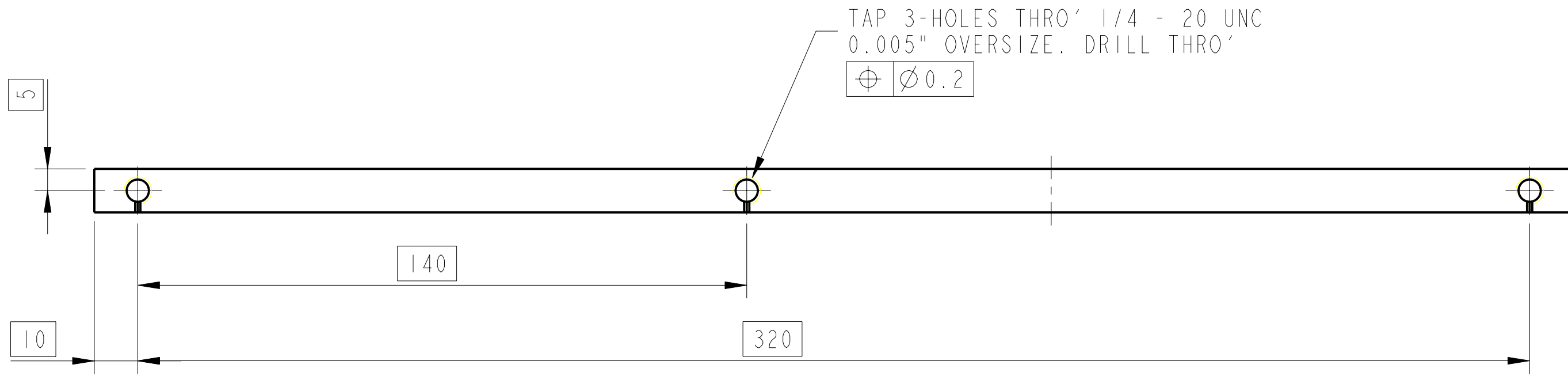


REV.	DATE	DCN #	DRAWING TREE #
A	9/OCT/06	E060248	
B	17/DEC/07	E060248-B	



PART NO. (SEE NOTE 4) TO BE ETCHED OR STAMPED IN APPROX POSITION SHOWN.



NOTES: (UNLESS OTHERWISE SPECIFIED)		DIMENSIONS ARE IN mm (INCHES)		CALIFORNIA INSTITUTE OF TECHNOLOGY	
1. REMOVE ALL SHARP EDGES, R.02 MIN.		X.XX ± 0.2mm (INCHES)		LIGO MASSACHUSETTS INSTITUTE OF TECHNOLOGY	
2. DO NOT SCALE FROM DRAWING.		ANGULAR ± 0.2°		IGR, GLASGOW UNIVERSITY GEO 600 GROUP	
3. ALL MACHINING FLUIDS SHALL BE WATER SOLUBLE AND FREE OF SULFUR, CHLORINE AND SILICONE, SUCH AS CINCINNATI MILACRON'S CIMTECH 410 (STAINLESS STEEL).		MATERIAL: AL ALLOY 5083		RUTHERFORD APPLETON LABORATORIES	
4. SCRIBE, ENGRAVE OR STAMP DRAWING PART NUMBER ON NOTED SURFACE OF PART AND A THREE DIGIT SERIAL NUMBER. SERIAL NUMBERS START AT 001 FOR THE FIRST PART AND PROCEED CONSECUTIVELY. USE .07\"/>					
		FINISH: CLEAN, GREASE FREE		SYSTEM alIGO	
		μm (μin) Ra = 1.6		SUB-SYSTEM SUS	
				NEXT ASSY TOP MASS QUAD	
				PART NAME BASE PLATE STIFFENER	
				SCALE 1:1 PROJECTION	
				DRG. NO. D060406	
				SHEET 1 OF 1	