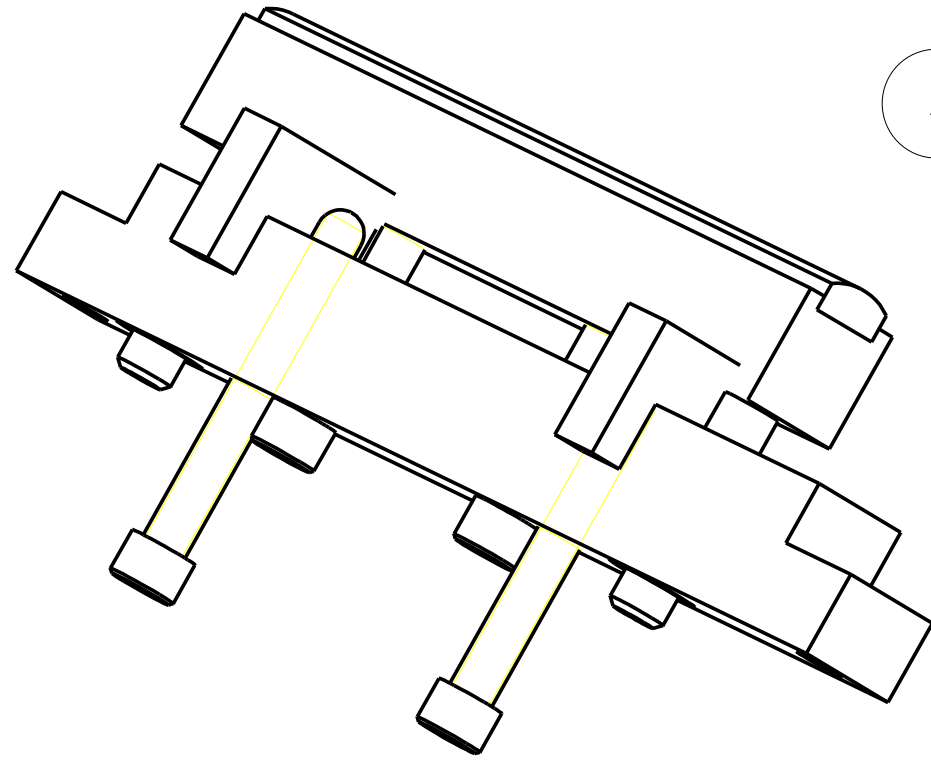
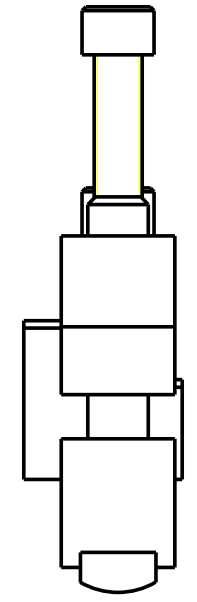
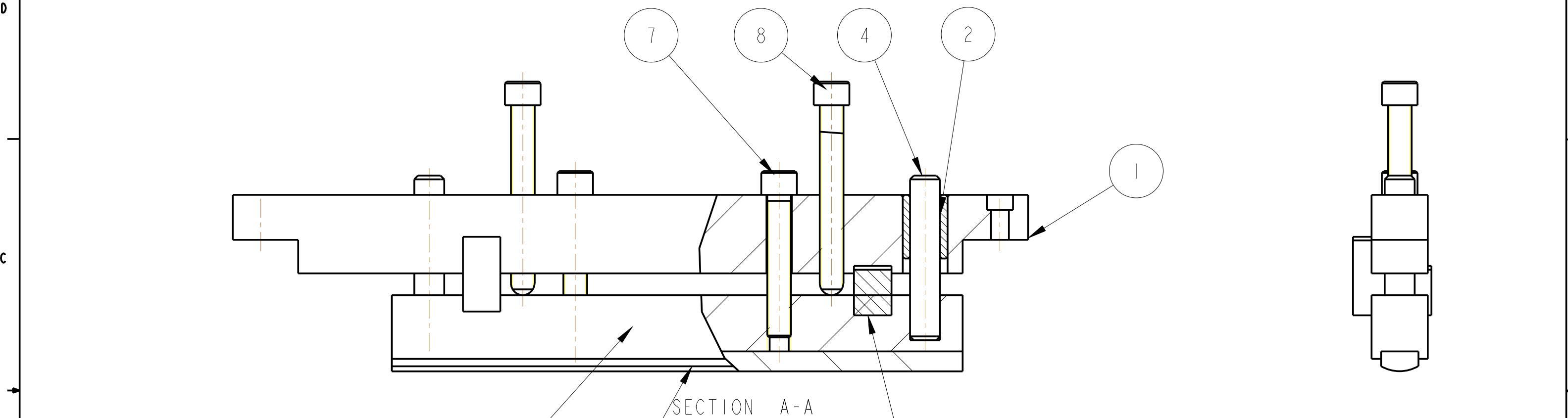


REV.	DATE	DCN #	DRAWING TREE #
A	30-OCT-06	E060260-00	.
B	21/DEC/07	E060260-B	.
C	22/JULY/08	E080372	.



SECTION A-A

ITEM	QTY	SPARE	TOTAL	PART NUMBER	DESCRIPTION	MATERIALS
1	1			D060444	BASE BAR - LONG; (ADJUSTABLE STOP MECHANISM)	AL. ALLOY: 5083 H4 or 6061
2	2			D060445	BUSH; (ADJUSTABLE PAD ASSYS)	PFA 440 HP: -----
3	1			D060447	ADJUSTABLE PAD JAW; ADJUSTABLE PAD ASSY (LONG)	AL. ALLOY: 5083 H4 OR 6061
4	2			D060448	PIN; (ADJUSTABLE PAD ASSYS)	ST. STEEL: 304/316
5	1			D060449	ADJUSTABLE PAD; ADJUSTABLE PAD ASSY (LONG)	PFA 440 HP: -----
6	2			D060450	SPACER # 4; (TEST MASS ADJUSTER)	AL. ALLOY: 5083 H4 OR 6061
7	2				1/4-20 UNC X 1.5" CAP HEAD; .	ST STEEL 316
8	2				1/4" 20 UNC X 2" CAP HEAD, SPHERICAL TIP; .	ST STEEL 316

PARTS LIST

NOTES: (UNLESS OTHERWISE SPECIFIED)

- REMOVE ALL SHARP EDGES, R.02 MIN.
- DO NOT SCALE FROM DRAWING.
- ALL MACHINING FLUIDS SHALL BE WATER SOLUBLE AND FREE OF SULFUR, CHLORINE AND SILICONE, SUCH AS CINCINNATI MILACRON'S CIMTECH 410 (STAINLESS STEEL)
- SCRIBE, ENGRAVE OR STAMP DRAWING PART NUMBER ON NOTED SURFACE OF PART AND A THREE DIGIT SERIAL NUMBER. SERIAL NUMBERS START AT 001 FOR THE FIRST PART AND PROCEED CONSECUTIVELY. USE .07" HIGH CHARACTERS. EXAMPLE: D020188- 001. A VIBRATORY TOOL MAY BE USED.

DIMENSIONS ARE IN mm (INCHES)		
TOLERANCES:		
X.XX ±0.2 mm		
ANGULAR ±0.25 °		
MATERIAL: -----		
SEE PARTS LIST		
FINISH: -----		
√μm (μin) Ra = -----		
DRAWN	NAME	DATE
CHECKED	AJB	11 JUNE 08
APPROVED	AJB	22/ JULY/08

LOGO CALIFORNIA INSTITUTE OF TECHNOLOGY
 MASSACHUSETTS INSTITUTE OF TECHNOLOGY
 IGR, GLASGOW UNIVERSITY GEO 600 GROUP
 RUTHERFORD APPLETON LABORATORIES

SYSTEM **ADVANCED LIGO**

SUB-SYSTEM **SUS**

NEXT ASSY **QUAD N-PYRE LOWER STRUCTURE**

PART NAME **ADJUSTABLE PAD ASSEMBLY LONG**

SCALE 1:1	PROJECTION:	SHEET 1 OF 1
-----------	-------------	--------------

ADDITIONAL NOTES:
 5. PART D060450 TO BE ADJUSTED FOR VARIOUS MASS POSITIONS.
 6. PFA540HP BUSH TO BE REAMED AFTER PRESS FITTING