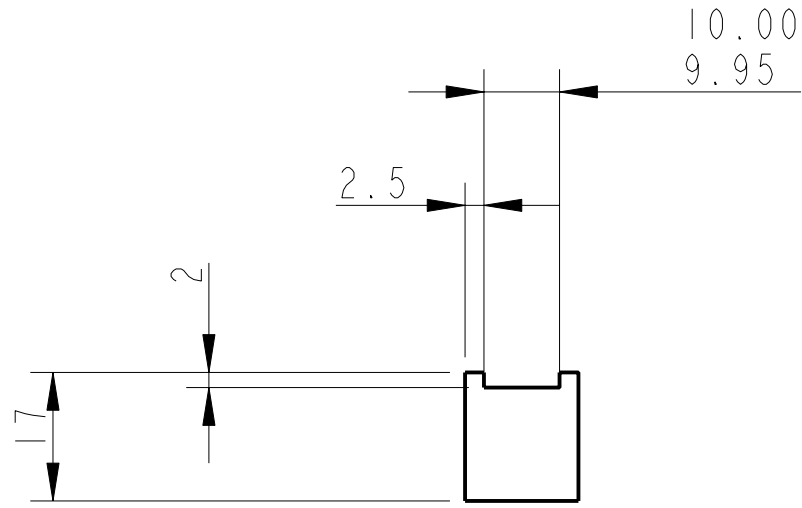
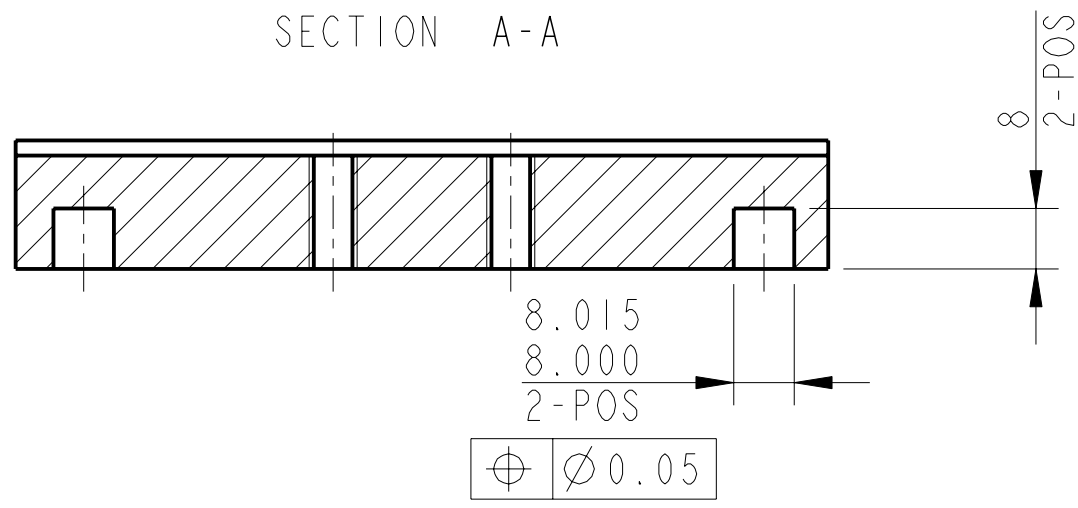


REV.	DATE	DCN #	DRAWING TREE #
A	30-OCT-06	E060260-00	

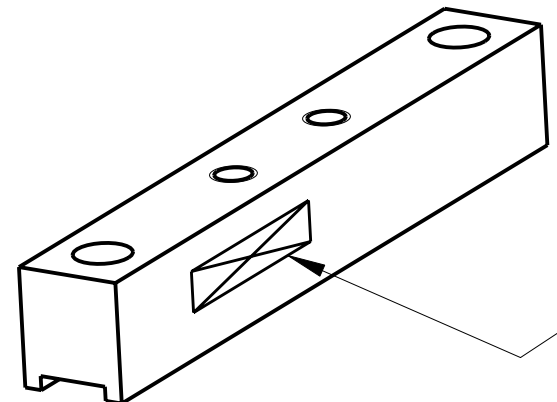
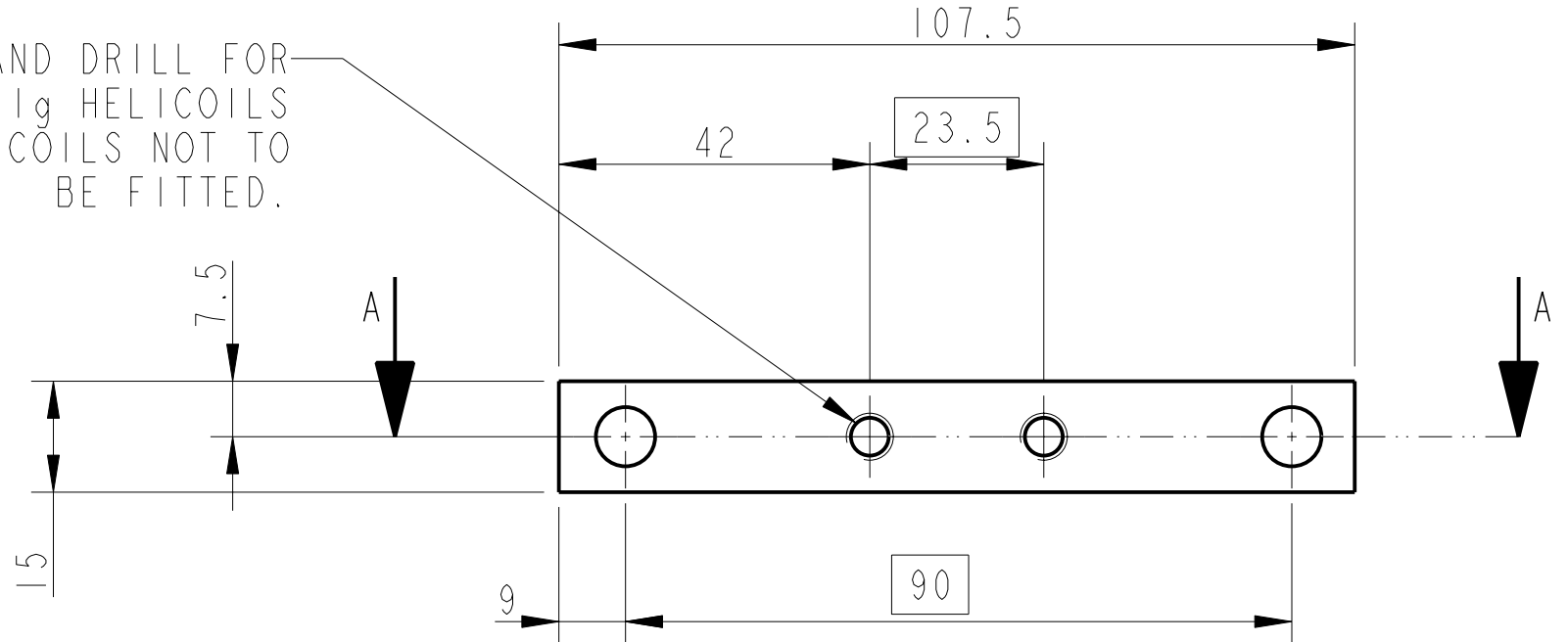


SECTION A-A



2-THRU' HOLES AND DRILL FOR
1/4-20 UNC X 1.5 D 1g HELICOILS
HELICOILS NOT TO
BE FITTED.

$\pm \phi 0.3$



PART NO. (SEE NOTE 4)
TO BE ETCHED OR STAMPED
IN APPROX POSITION SHOWN.

NOTES: (UNLESS OTHERWISE SPECIFIED)

- REMOVE ALL SHARP EDGES, R.02 MIN.
- DO NOT SCALE FROM DRAWING.
- ALL MACHINING FLUIDS SHALL BE WATER SOLUBLE AND FREE OF SULFUR, CHLORINE AND SILICONE, SUCH AS CINCINNATI MILACRON'S CIMTECH 410 (STAINLESS STEEL)
- SCRIBE, ENGRAVE OR STAMP DRAWING PARTNUMBER ON NOTED SURFACE OF PART AND A THREE DIGIT SERIAL NUMBER. SERIAL NUMBERS START AT 001 FOR THE FIRST PART AND PROCEED CONSECUTIVELY. USE .07" HIGH CHARACTERS. EXAMPLE: D020188- 001. A VIBRATORY TOOL MAY BE USED.

DIMENSIONS ARE IN mm [INCHES]
TOLERANCES:
X.XX ± 0.2 mm
ANGULAR $\pm 0.25^\circ$

MATERIAL: AL. ALLOY
5083 H4 OR 6061

FINISH: CLEAN
 $\sqrt{\mu m}$ [μin] $R_a = 1.6$

	NAME	DATE
DRAWN	NJS/FEL	01/AUG/06
CHECKED	J'OD	--/--/--
APPROVED	IW	--/--/--

SCALE: 1:1 PROJECTION: SHEET 1 OF 1

CALIFORNIA INSTITUTE OF TECHNOLOGY
MASSACHUSETTS INSTITUTE OF TECHNOLOGY
IGR, GLASGOW UNIVERSITY GEO 600 GROUP
RUTHERFORD APPLETON LABORATORIES

SYSTEM: **ADVANCED LIGO**

SUB-SYSTEM: **SUS**

NEXT ASSY: **QUAD N-PTYPE LOWER STRUCTURE**

PART NAME: **ADJUSTABLE PAD JAW SHORT**

SIZE: **B** DRG. NO. **D060459** REV. **A.**