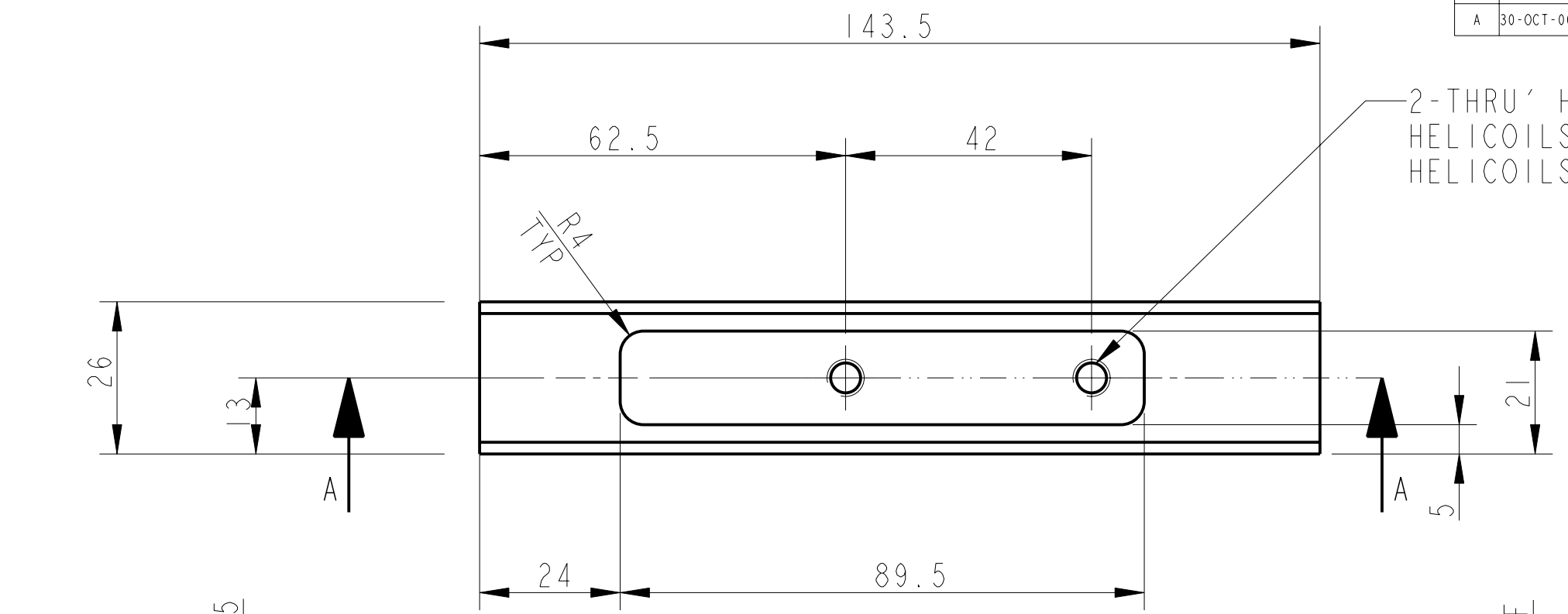


REV.	DATE	DCN #	DRAWING TREE #
A	30-OCT-06	E060260-00	

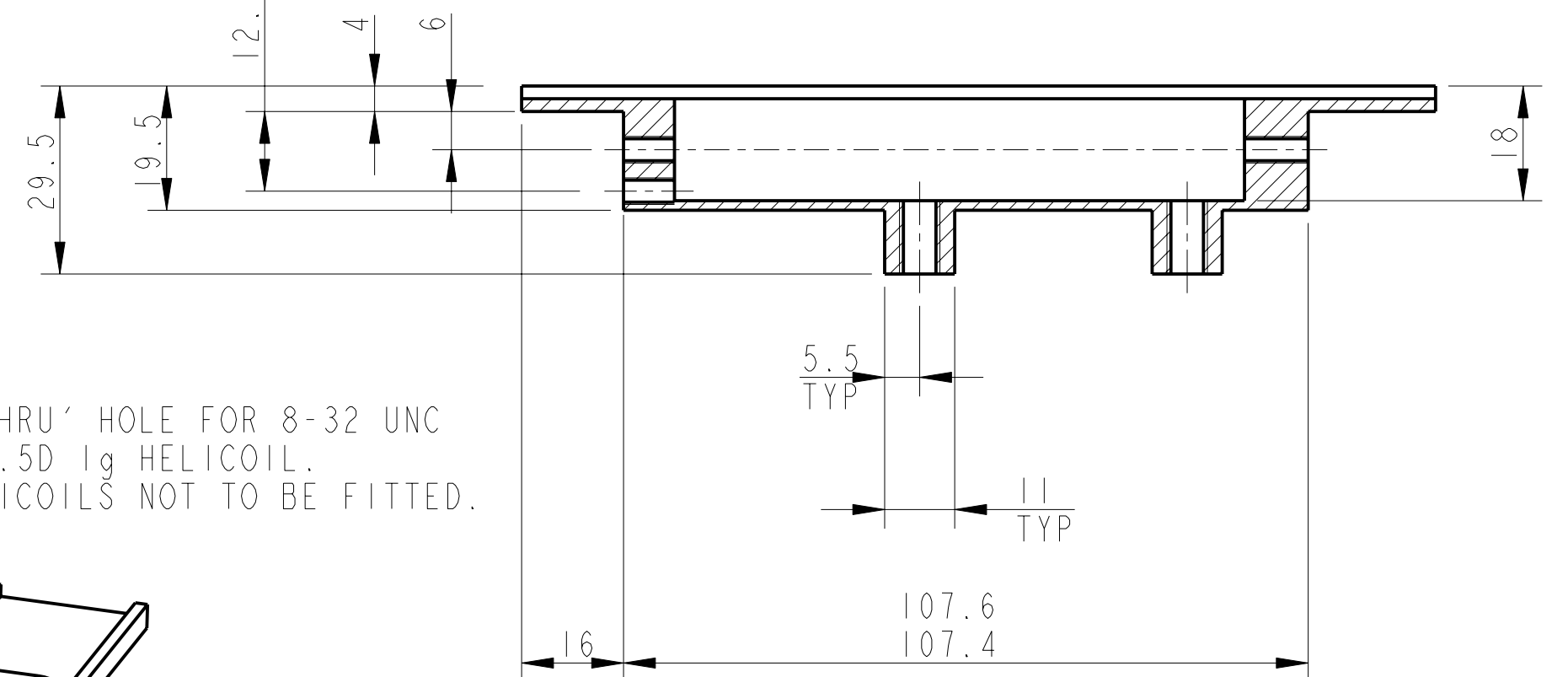
D
C
B
A

D
C
B
A

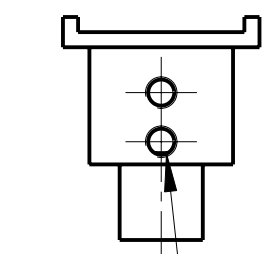
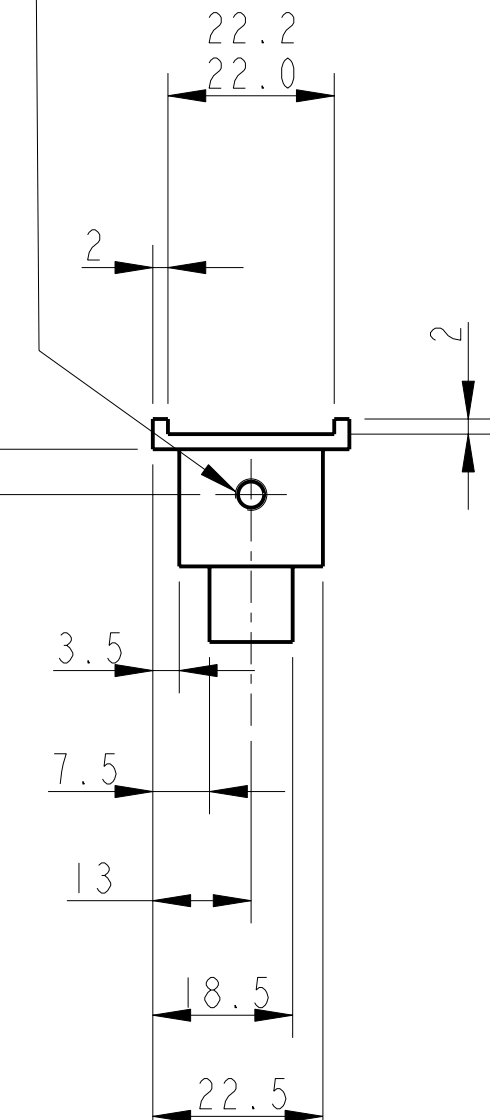


2-THRU' HOLES FOR 1/4-20 UNC X 1.5 D 1g HELICOILS. HELICOILS NOT TO BE FITTED.

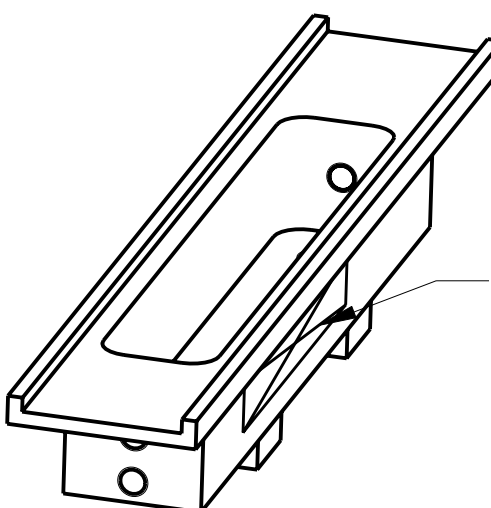
1-THRU' HOLES FOR 8-32 UNC X 1.5 D 1g HELICOILS. HELICOILS NOT TO BE FITTED



SECTION A-A



2-THRU' HOLE FOR 8-32 UNC X 1.5D 1g HELICOIL. HELICOILS NOT TO BE FITTED.



PART NO. (SEE NOTE 4) TO BE ETCHED OR STAMPED IN APPROX POSITION SHOWN.

NOTES: (UNLESS OTHERWISE SPECIFIED)

- REMOVE ALL SHARP EDGES, R.02 MIN.
- DO NOT SCALE FROM DRAWING.
- ALL MACHINING FLUIDS SHALL BE WATER SOLUBLE AND FREE OF SULFUR, CHLORINE AND SILICONE, SUCH AS CINCINNATI MILACRON'S CIMTECH 410 (STAINLESS STEEL)
- SCRIBE, ENGRAVE OR STAMP DRAWING PART NUMBER ON NOTED SURFACE OF PART AND A THREE DIGIT SERIAL NUMBER. SERIAL NUMBERS START AT 001 FOR THE FIRST PART AND PROCEED CONSECUTIVELY. USE .07" HIGH CHARACTERS. EXAMPLE: D020188-001. A VIBRATORY TOOL MAY BE USED.

DIMENSIONS ARE IN mm [INCHES]
TOLERANCES:
X.XX ±0.2 mm
ANGULAR ±0.25°

MATERIAL: AL. ALLOY
5083 H4 OR 6061

FINISH: CLEAN
√μm [μin] Ra = 1.6

NAME	DATE
DRAWN NJS/FEL	13/JULY/06
CHECKED J'OD	--/--/--
APPROVED IW	--/--/--

CALIFORNIA INSTITUTE OF TECHNOLOGY
MASSACHUSETTS INSTITUTE OF TECHNOLOGY
IGR, GLASGOW UNIVERSITY GEO 600 GROUP
RUTHERFORD APPLETON LABORATORIES

SYSTEM **ADVANCED LIGO**

SUB-SYSTEM **SUS**

NEXT ASSY **QUAD N-PTYPE LOWER STRUCTURE**

PART NAME **PENULTIMATE MASS LWR STOP MT 1**

DRG. NO. **D060477**

SCALE 1:1 PROJECTION: SHEET 1 OF 1

8 7 6 5 4 3 2 1