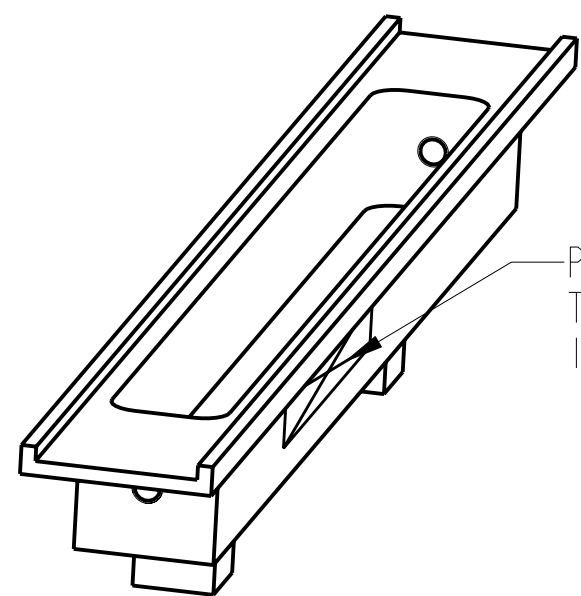
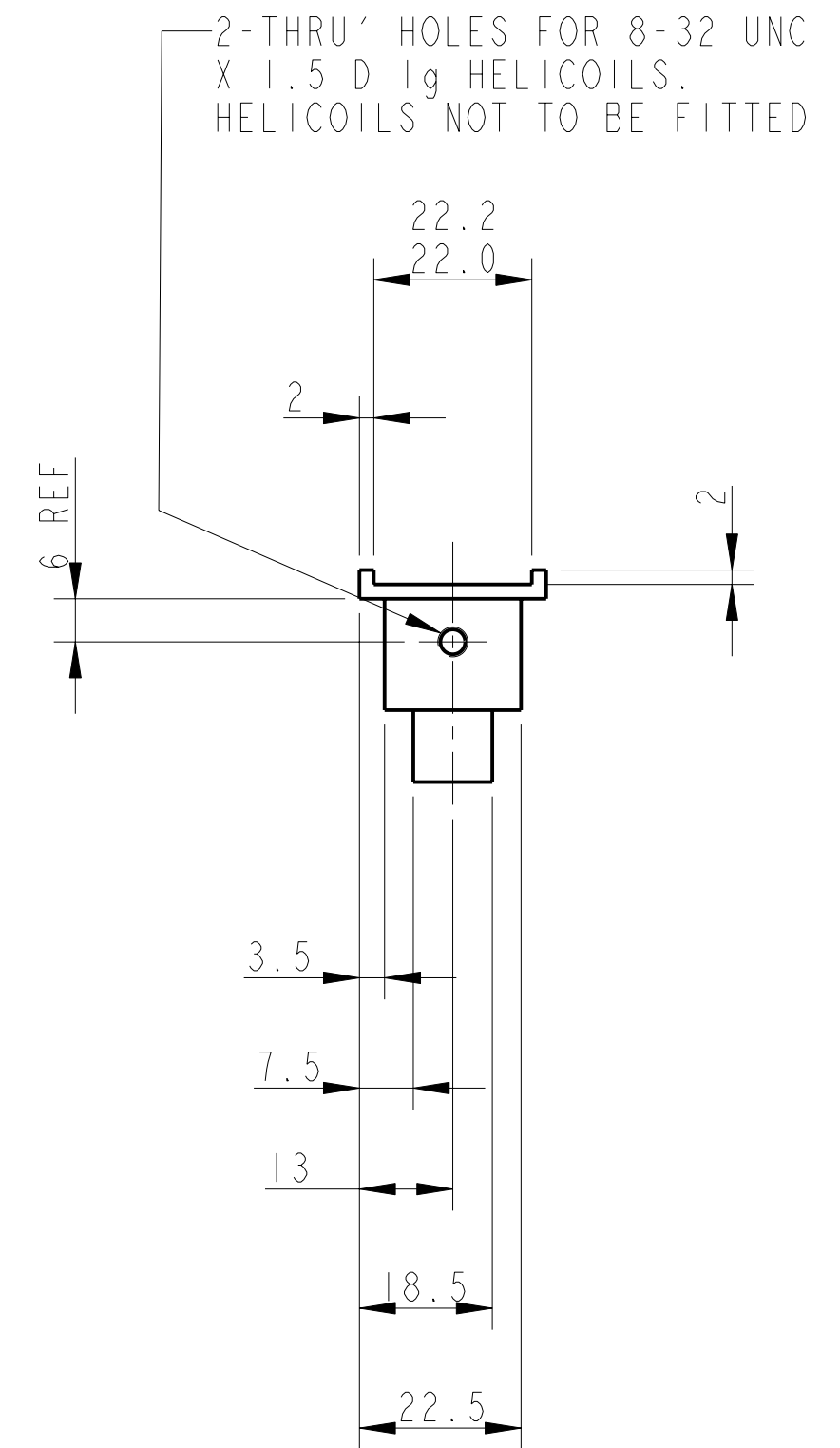
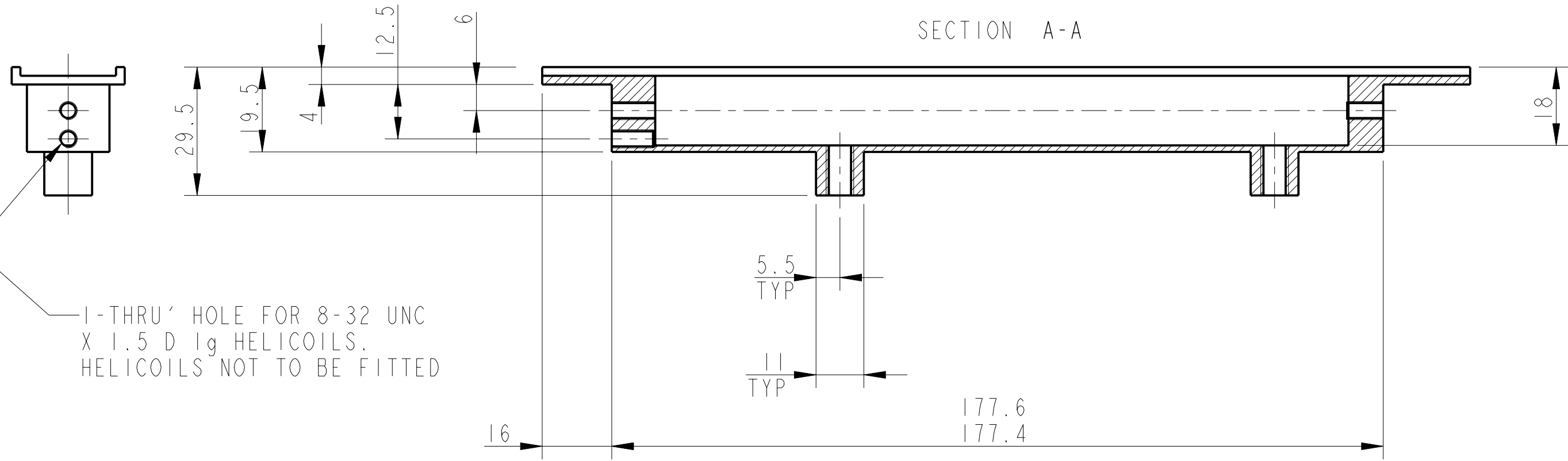
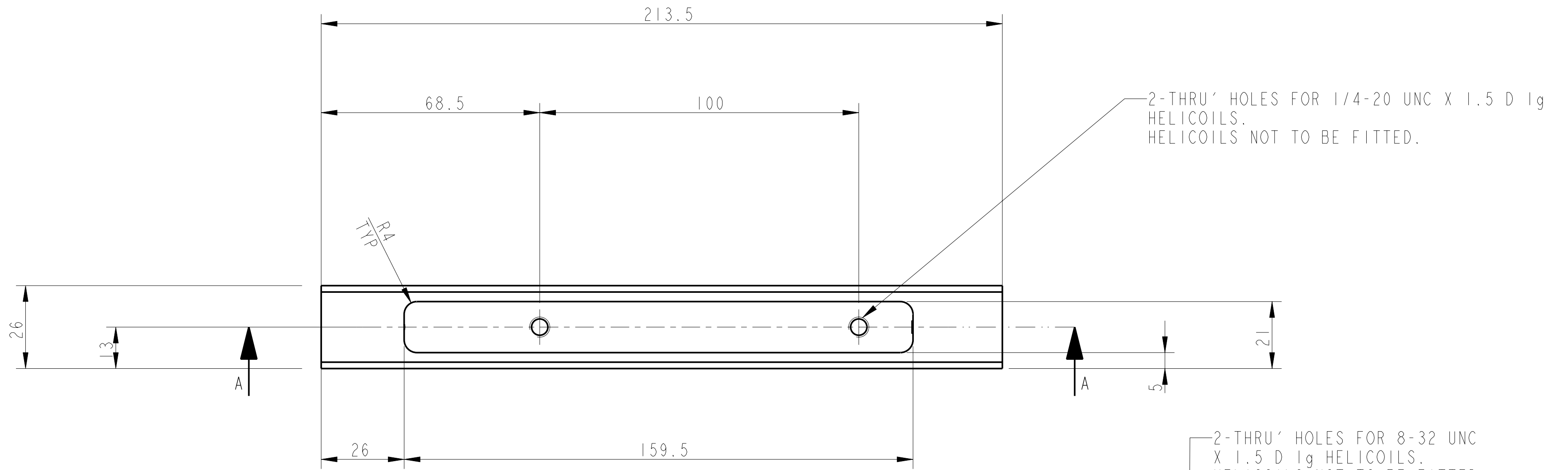


REV.	DATE	DCN #	DRAWING TREE #
A	30-OCT-06	E060260-00	



PART NO. (SEE NOTE 4) TO BE ETCHED OR STAMPED IN APPROX POSITION SHOWN.

NOTES: (UNLESS OTHERWISE SPECIFIED)				CALIFORNIA INSTITUTE OF TECHNOLOGY	
1. REMOVE ALL SHARP EDGES, R. 02 MIN.	2. DO NOT SCALE FROM DRAWING.	3. ALL MACHINING FLUIDS SHALL BE WATER SOLUBLE AND FREE OF SULFUR, CHLORINE AND SILICONE, SUCH AS CINCINNATI MILACRON'S CIMTECH 410 (STAINLESS STEEL).	4. SCRIBE, ENGRAVE OR STAMP DRAWING PART NUMBER ON NOTED SURFACE OF PART AND A THREE DIGIT SERIAL NUMBER. SERIAL NUMBERS START AT 001 FOR THE FIRST PART AND PROCEED CONSECUTIVELY. USE .07" HIGH CHARACTERS. EXAMPLE: D020188-001. A VIBRATORY TOOL MAY BE USED.	MASSACHUSETTS INSTITUTE OF TECHNOLOGY IGR, GLASGOW UNIVERSITY GEO 600 GROUP RUTHERFORD APPLETON LABORATORIES	
DIMENSIONS ARE IN mm (INCHES) TOLERANCES:				SYSTEM ADVANCED LIGO	
X.XX ± 0.2 mm (INCHES) ANGULAR ± 0.25°				SUB-SYSTEM SUS	
MATERIAL: AL. ALLOY 5083 H4 OR 6061				NEXT ASSY QUAD N-PTYPE LOWER STRUCTURE	
FINISH: CLEAN Ra = 1.6				PART NAME PENULTIMATE MASS LWR STOP MT 2	
DRAWN	NJS/FEL	17/JULY/06	DATE	DRG. NO.	D060478
CHECKED	J'OD	--/--/--	SCALE	1:1	PROJECTION
APPROVED	IW	--/--/--	SHEET	1	OF 1