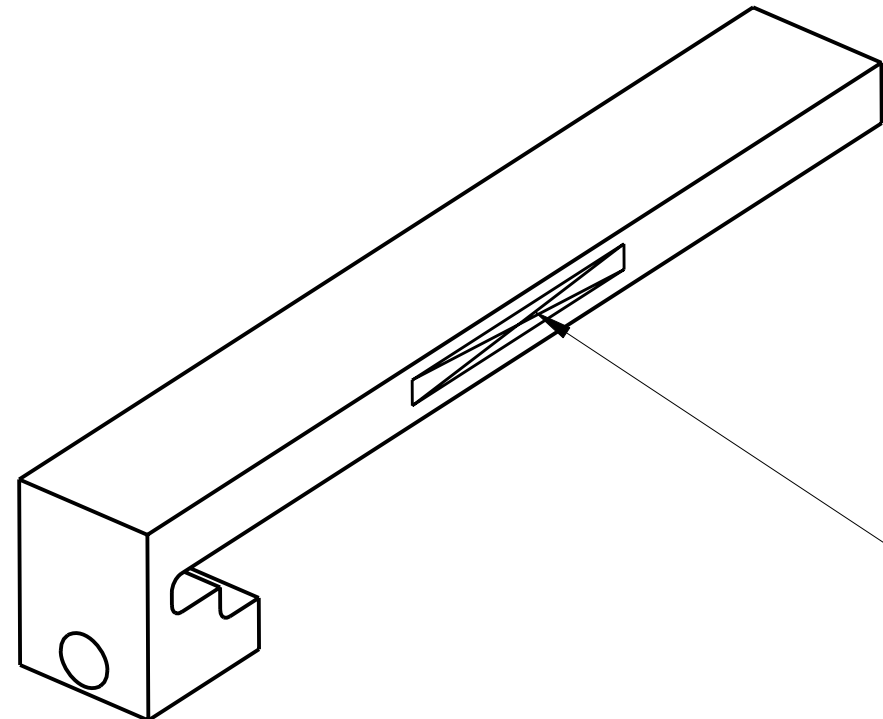
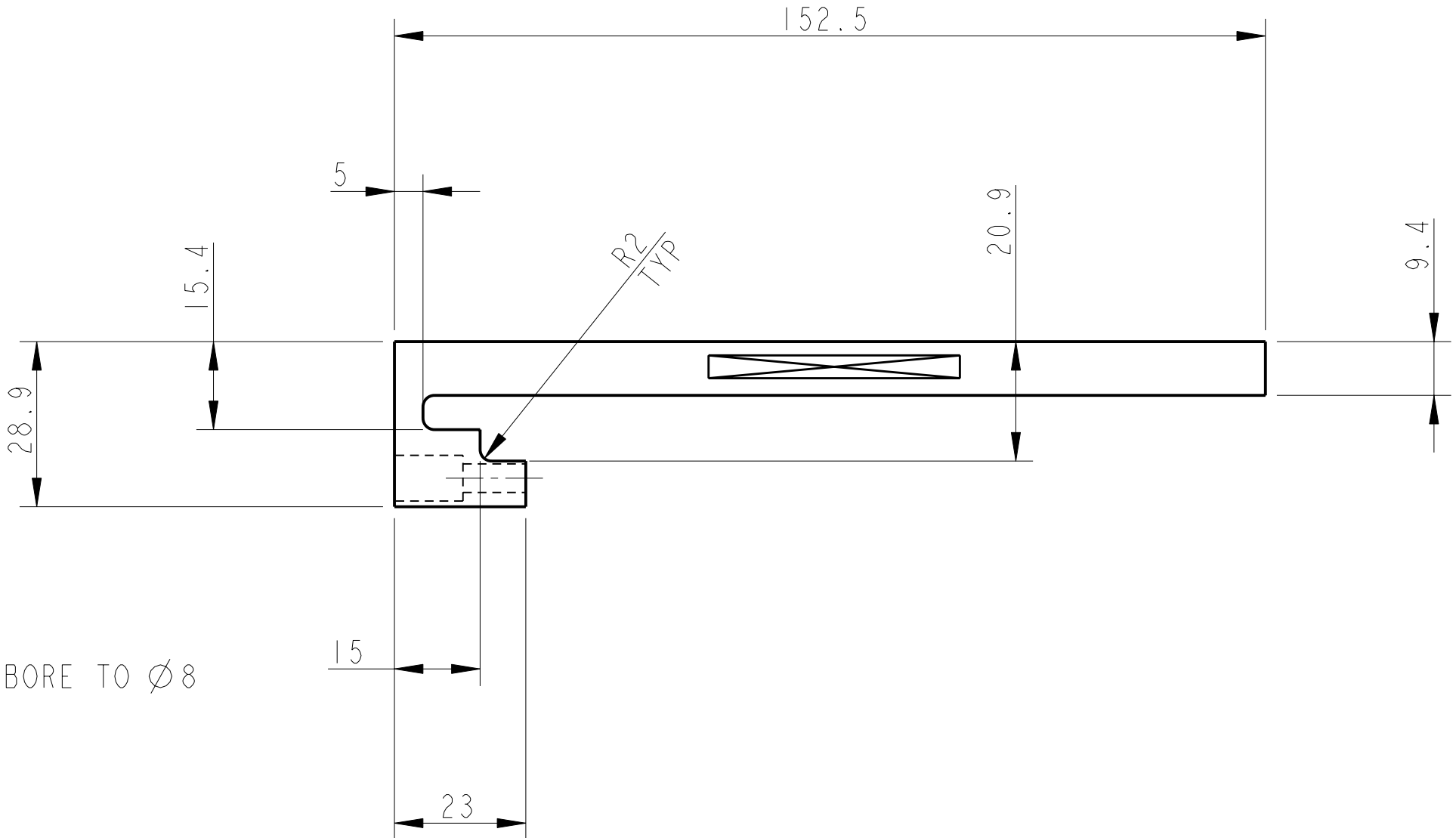
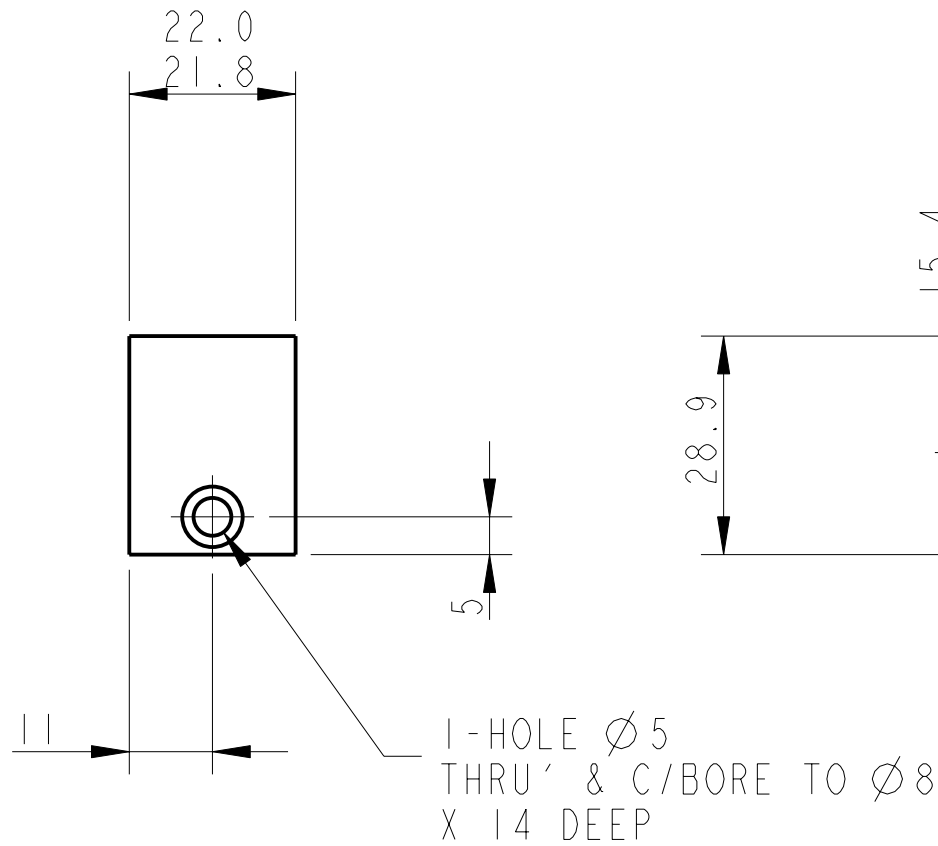


REV.	DATE	DCN #	DRAWING TREE #
A	30-OCT-06	E060260-00	
B	21/DEC/07	E060260-B	

D
C
B
A

D
C
B
A



PART NO. (SEE NOTE 4)
TO BE ETCHED OR STAMPED
IN APPROX POSITION SHOWN.

NOTES: (UNLESS OTHERWISE SPECIFIED)

- REMOVE ALL SHARP EDGES, R.02 MIN.
- DO NOT SCALE FROM DRAWING.
- ALL MACHINING FLUIDS SHALL BE WATER SOLUBLE AND FREE OF SULFUR, CHLORINE AND SILICONE, SUCH AS CINCINNATI MILACRON'S CIMTECH 410 (STAINLESS STEEL)
- SCRIBE, ENGRAVE OR STAMP DRAWING PART NUMBER ON NOTED SURFACE OF PART AND A THREE DIGIT SERIAL NUMBER. SERIAL NUMBERS START AT 001 FOR THE FIRST PART AND PROCEED CONSECUTIVELY. USE .07" HIGH CHARACTERS. EXAMPLE: D020188- 001. A VIBRATORY TOOL MAY BE USED.

DIMENSIONS ARE IN mm [INCHES]
TOLERANCES:
X.XX ± 0.2 mm
ANGULAR $\pm 0.25^\circ$

MATERIAL: PFA 440 HP

FINISH: CLEAN
 $\sqrt{\mu m}$ [μin] $R_a = 1.6$

	NAME	DATE
DRAWN	NJS/FEL	13/JULY/06
CHECKED	J'OD	--/---/---
APPROVED	IW	--/---/---

CALIFORNIA INSTITUTE OF TECHNOLOGY
 MASSACHUSETTS INSTITUTE OF TECHNOLOGY
 IGR, GLASGOW UNIVERSITY GEO 600 GROUP
 RUTHERFORD APPLETON LABORATORIES

SYSTEM **ADVANCED LIGO**
 SUB-SYSTEM **SUS**
 NEXT ASSY **QUAD N-PTYPE LOWER STRUCTURE**
 PART NAME **PEN RE MASS PAD**

SIZE **B** DRG. NO. **D060479** REV **B.**
 SCALE 1:1 PROJECTION: SHEET 1 OF 1