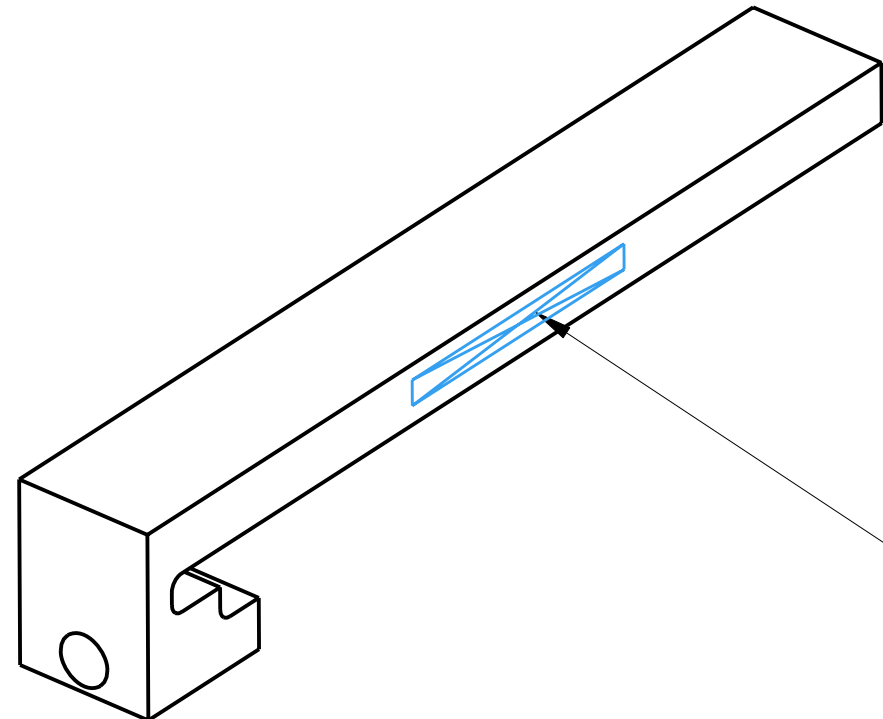
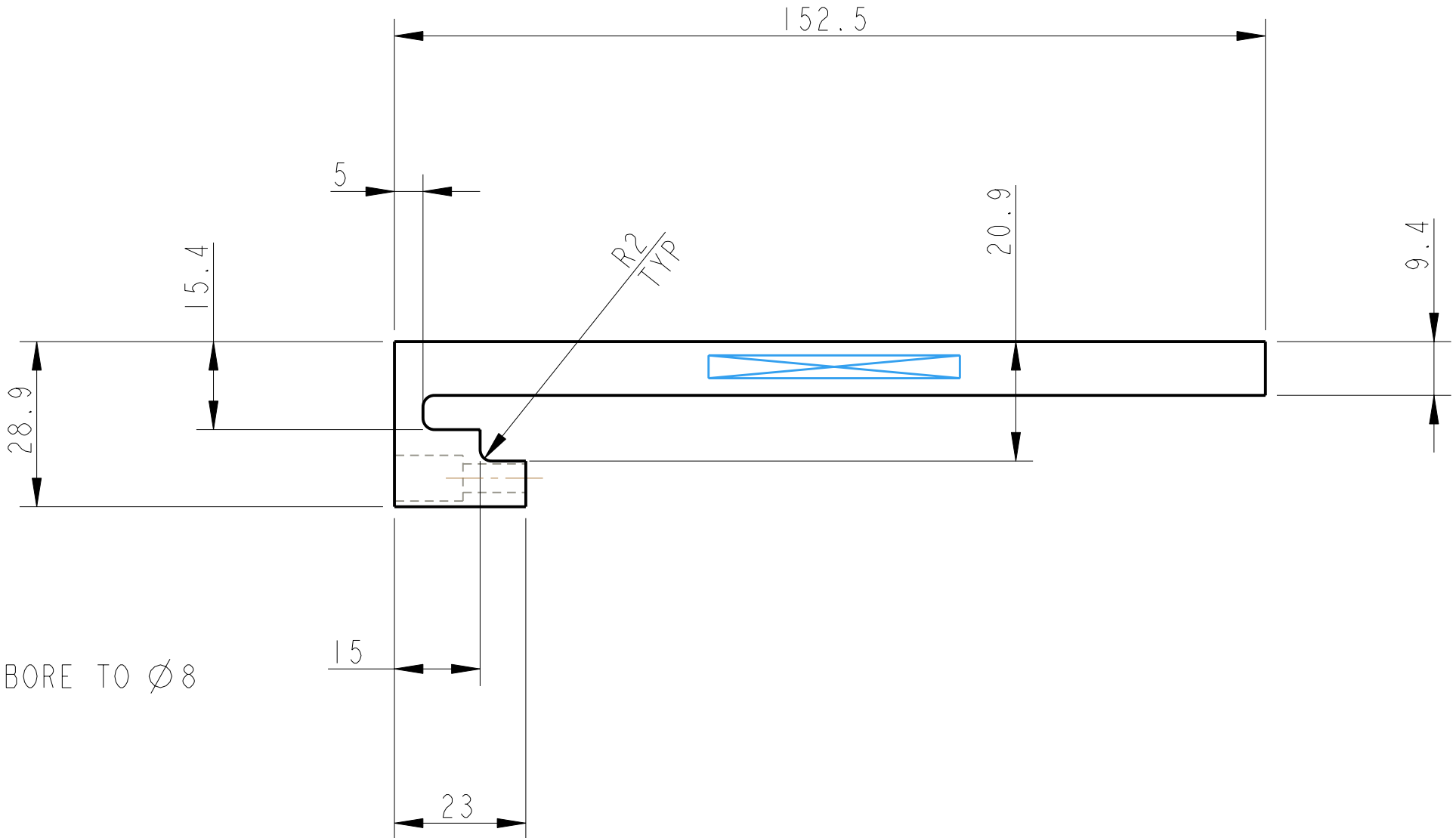
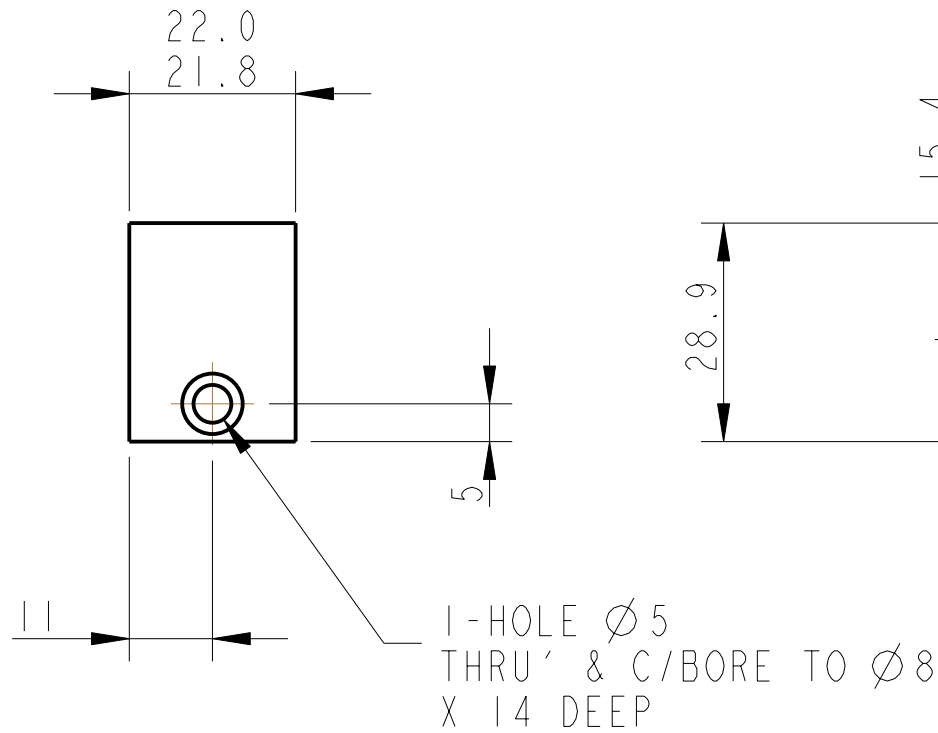


REV.	DATE	DCN #	DRAWING TREE #
A	30-OCT-06	E060260-00	
B	21/DEC/07	E060260-B	

D
C
B
A

D
C
B
A



PART NO. (SEE NOTE 4)
TO BE ETCHED OR STAMPED
IN APPROX POSITION SHOWN.

NOTES: (UNLESS OTHERWISE SPECIFIED)			CALIFORNIA INSTITUTE OF TECHNOLOGY MASSACHUSETTS INSTITUTE OF TECHNOLOGY IGR, GLASGOW UNIVERSITY GEO 600 GROUP RUTHERFORD APPLETON LABORATORIES												
1. REMOVE ALL SHARP EDGES, R.02 MIN. 2. DO NOT SCALE FROM DRAWING. 3. ALL MACHINING FLUIDS SHALL BE WATER SOLUBLE AND FREE OF SULFUR, CHLORINE AND SILICONE, SUCH AS CINCINNATI MILACRON'S CIMTECH 410 (STAINLESS STEEL) 4. SCRIBE, ENGRAVE OR STAMP DRAWING PARTNUMBER ON NOTED SURFACE OF PART AND A THREE DIGIT SERIAL NUMBER. SERIAL NUMBERS START AT 001 FOR THE FIRST PART AND PROCEED CONSECUTIVELY. USE .07" HIGH CHARACTERS. EXAMPLE: D020188- 001. A VIBRATORY TOOL MAY BE USED.	DIMENSIONS ARE IN mm [INCHES] TOLERANCES:														
	X.XX ±0.2 mm ANGULAR ±0.25 °		SYSTEM aLIGO												
	MATERIAL: PFA 440 HP		SUB-SYSTEM SUS												
	FINISH: CLEAN √μm [μin] Ra = 1.6		NEXT ASSY QUAD LOWER STRUCTURE												
<table border="1"> <thead> <tr> <th></th> <th>NAME</th> <th>DATE</th> </tr> </thead> <tbody> <tr> <td>DRAWN</td> <td>NJS/FEL</td> <td>13/JULY/06</td> </tr> <tr> <td>CHECKED</td> <td>MB</td> <td>15/MAR/10</td> </tr> <tr> <td>APPROVED</td> <td>JOD</td> <td>15/MAR/10</td> </tr> </tbody> </table>			NAME	DATE	DRAWN	NJS/FEL	13/JULY/06	CHECKED	MB	15/MAR/10	APPROVED	JOD	15/MAR/10	PART NAME PEN RE MASS PAD	
	NAME	DATE													
DRAWN	NJS/FEL	13/JULY/06													
CHECKED	MB	15/MAR/10													
APPROVED	JOD	15/MAR/10													
<table border="1"> <thead> <tr> <th>SIZE</th> <th>DRG. NO.</th> <th>REV</th> </tr> </thead> <tbody> <tr> <td>B</td> <td>D060479</td> <td>C.</td> </tr> </tbody> </table>		SIZE	DRG. NO.	REV	B	D060479	C.	SCALE 1:1 PROJECTION: SHEET 1 OF 1							
SIZE	DRG. NO.	REV													
B	D060479	C.													