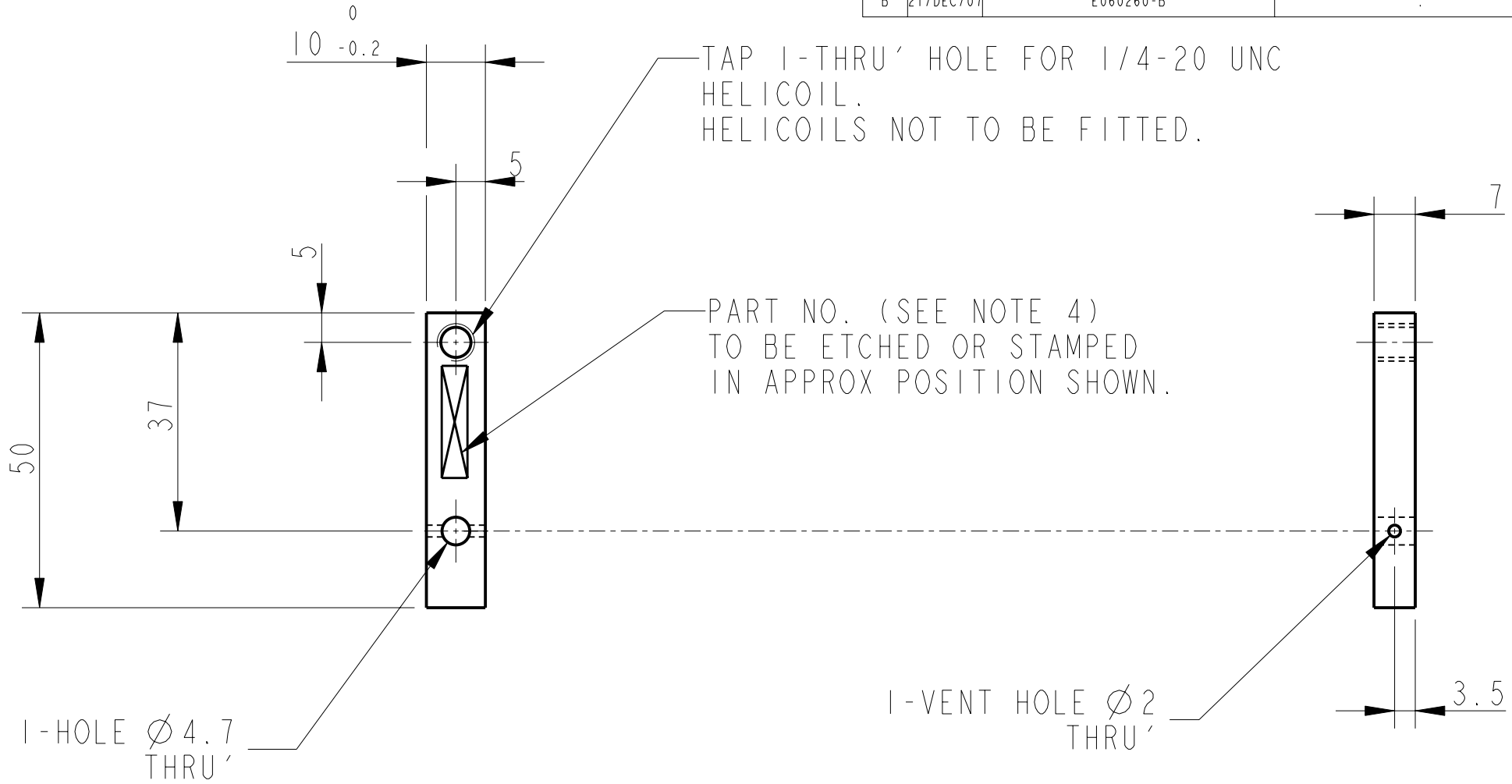


REV.	DATE	DCN #	DRAWING TREE #
A	30-OCT-06	E060260-00	.
B	21/DEC/07	E060260-B	.



TAP 1-THRU' HOLE FOR 1/4-20 UNC HELICOIL. HELICOILS NOT TO BE FITTED.

PART NO. (SEE NOTE 4) TO BE ETCHED OR STAMPED IN APPROX POSITION SHOWN.

1-HOLE $\phi 4.7$ THRU'

1-VENT HOLE $\phi 2$ THRU'

NOTES: (UNLESS OTHERWISE SPECIFIED)		CALIFORNIA INSTITUTE OF TECHNOLOGY MASSACHUSETTS INSTITUTE OF TECHNOLOGY IGR, GLASGOW UNIVERSITY GEO 600 GROUP RUTHERFORD APPLETON LABORATORIES	
1. REMOVE ALL SHARP EDGES, R.02 MIN. 2. DO NOT SCALE FROM DRAWING. 3. ALL MACHINING FLUIDS SHALL BE WATER SOLUBLE AND FREE OF SULFUR, CHLORINE AND SILICONE, SUCH AS CINCINNATI MILACRON'S CIMTECH 410 (STAINLESS STEEL) 4. SCRIBE, ENGRAVE OR STAMP DRAWING PARTNUMBER ON NOTED SURFACE OF PART AND A THREE DIGIT SERIAL NUMBER. SERIAL NUMBERS START AT 001 FOR THE FIRST PART AND PROCEED CONSECUTIVELY. USE .07" HIGH CHARACTERS. EXAMPLE: D020188- 001. A VIBRATORY TOOL MAY BE USED.	DIMENSIONS ARE IN mm [INCHES]		SYSTEM ADVANCED LIGO SUB-SYSTEM SUS NEXT ASSY QUAD N-PTYPE LOWER STRUCTURE PART NAME ROUND MASS FRONT STOP
	TOLERANCES: X.XX ± 0.2 mm ANGULAR $\pm 0.25^\circ$		
	MATERIAL: AL. ALLOY 5083 H4 OR 6061		
	FINISH: CLEAN $\sqrt{\mu m}$ [μin] $R_a = 1.6$		
	NAME	DATE	SIZE
	DRAWN NJS/FEL	13/JULY/06	A
	CHECKED J'OD	--/--/--	DRG. NO. D060481
	APPROVED IW	--/--/--	SCALE 1:1 PROJECTION: SHEET 1 OF 1
			REV C.