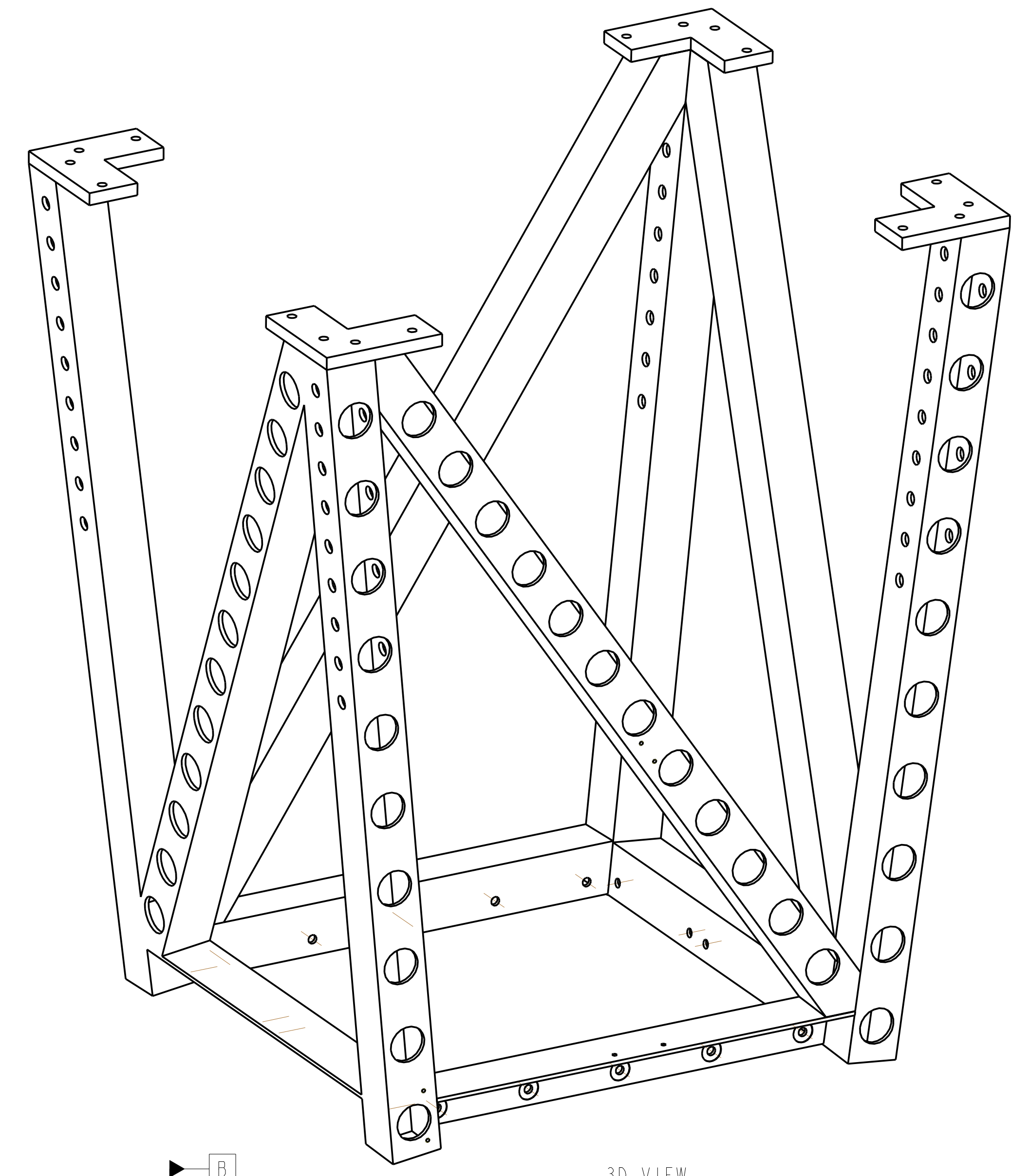
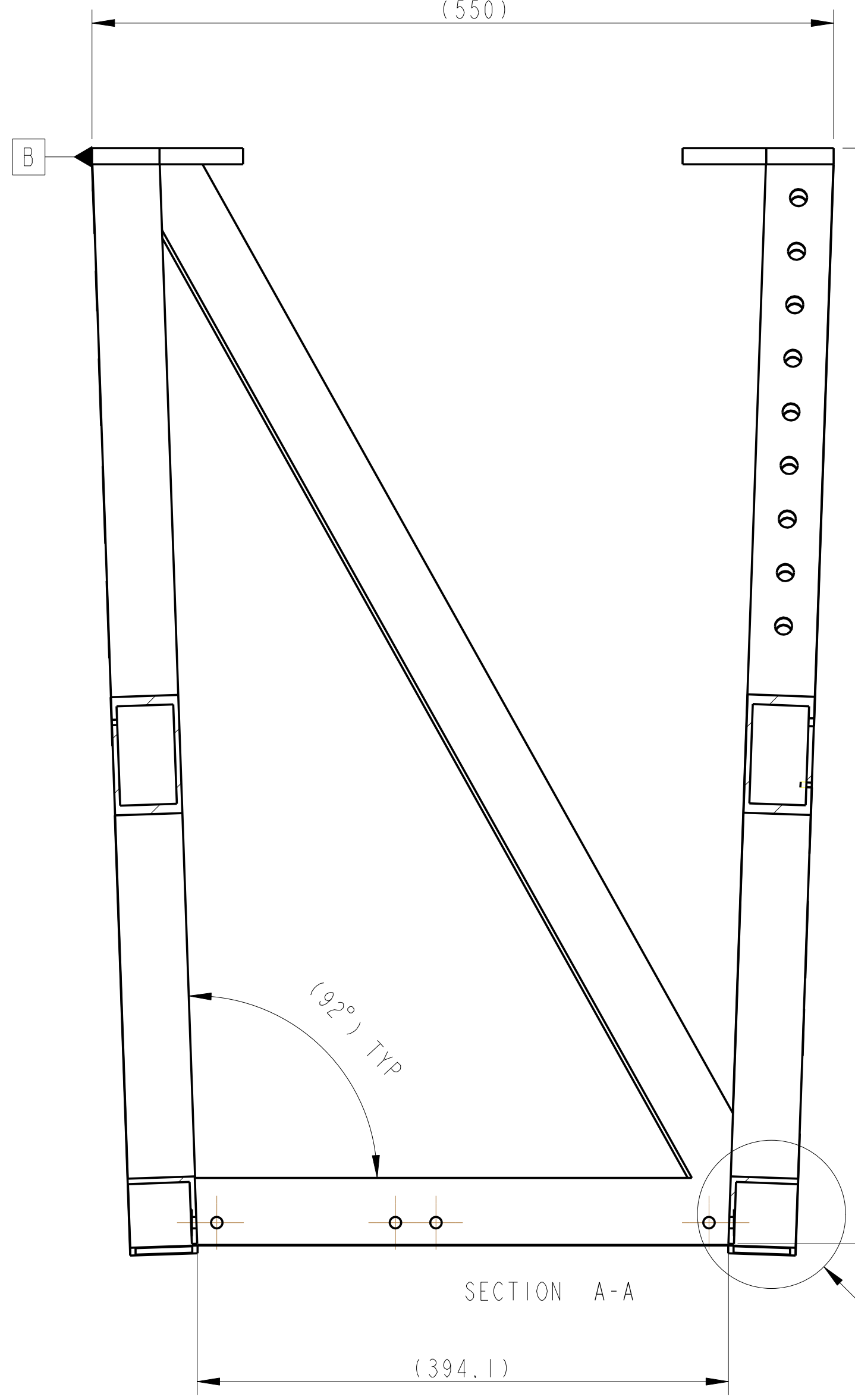


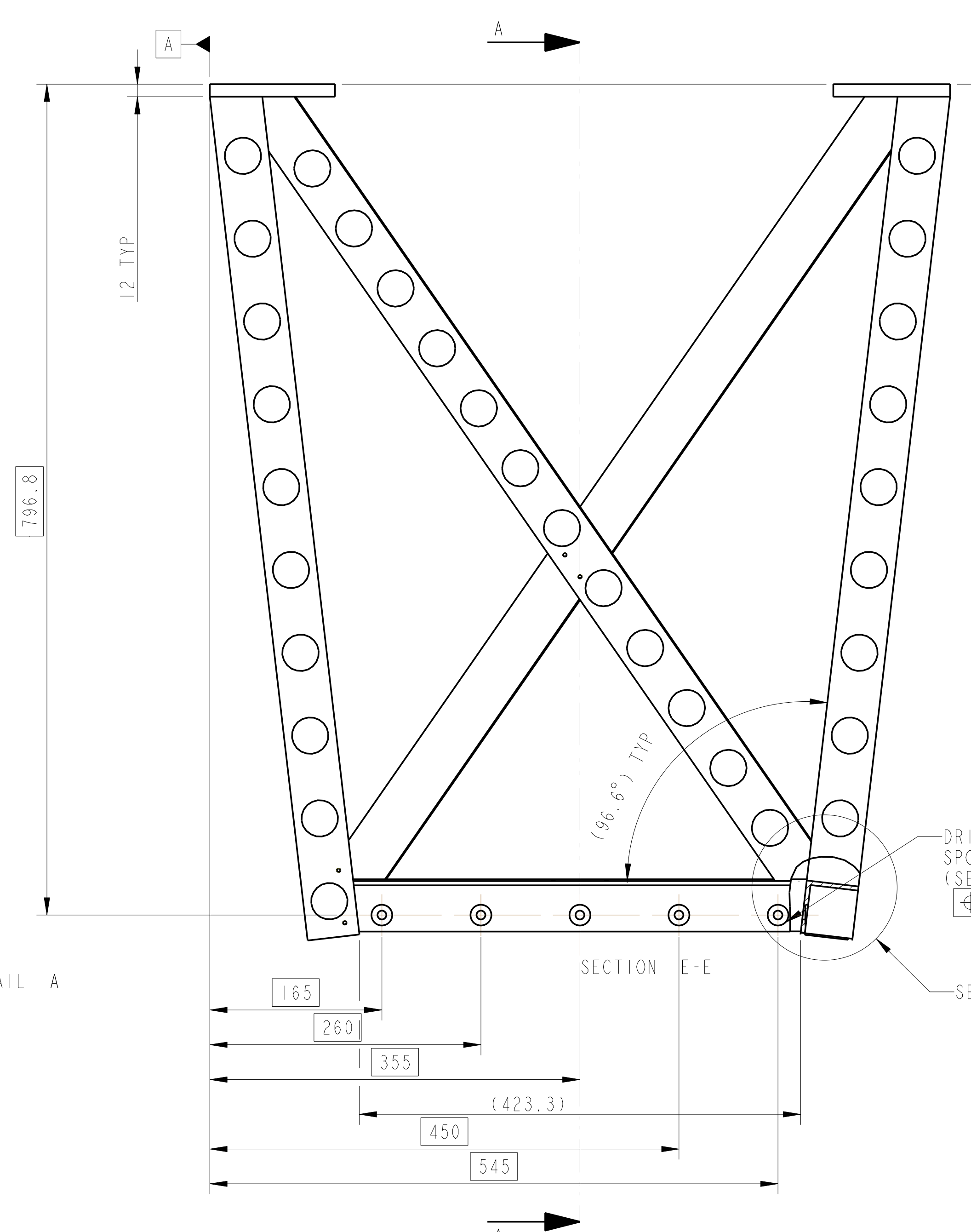
16 HOLES MARKED 'F'  
TAP 3/8-16 UNC THRO, TAP  
0.005" OVERSIZE  
⊕  $\varnothing 0.4$



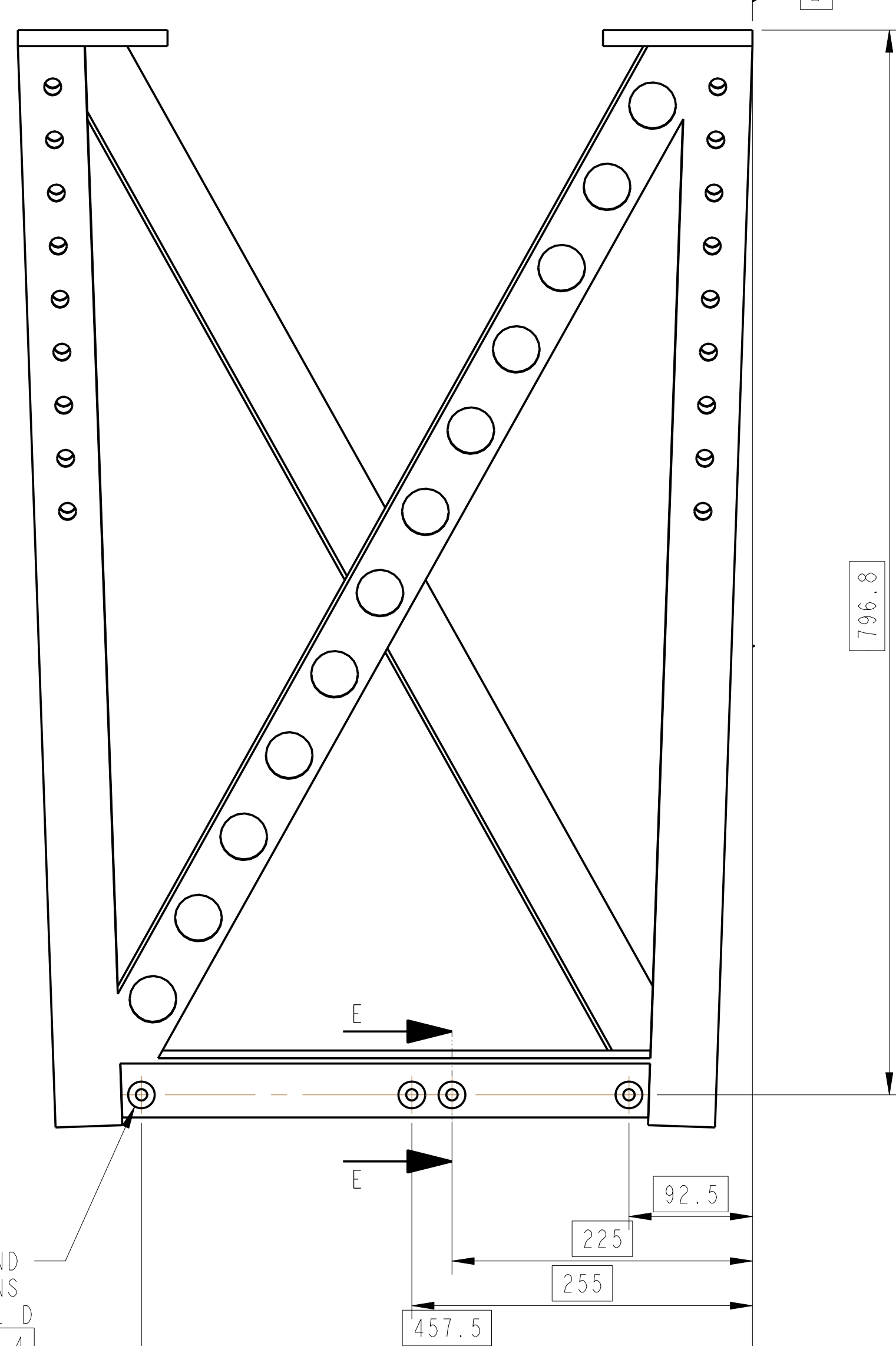
3D VIEW



SECTION A-A



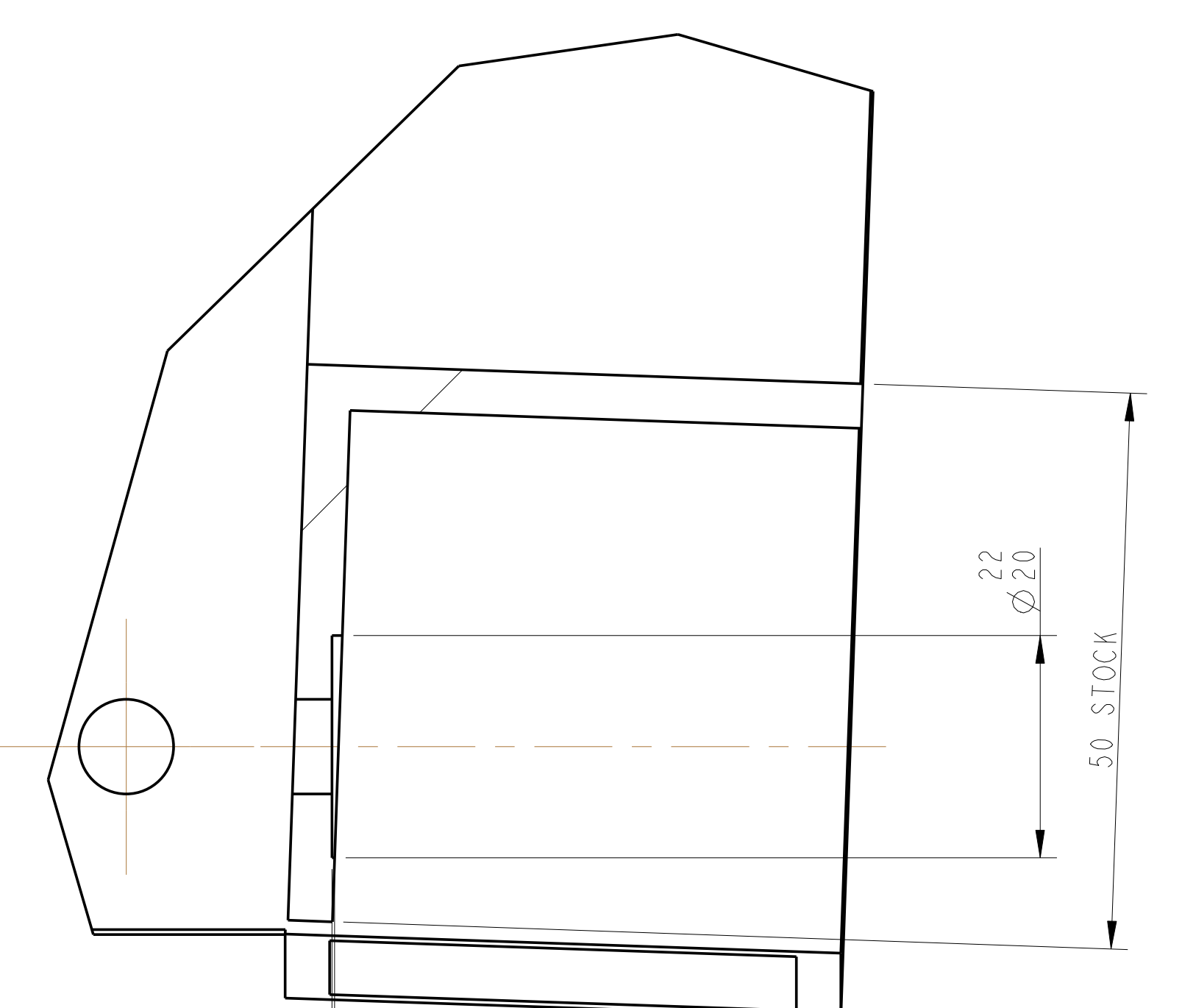
SECTION E-E



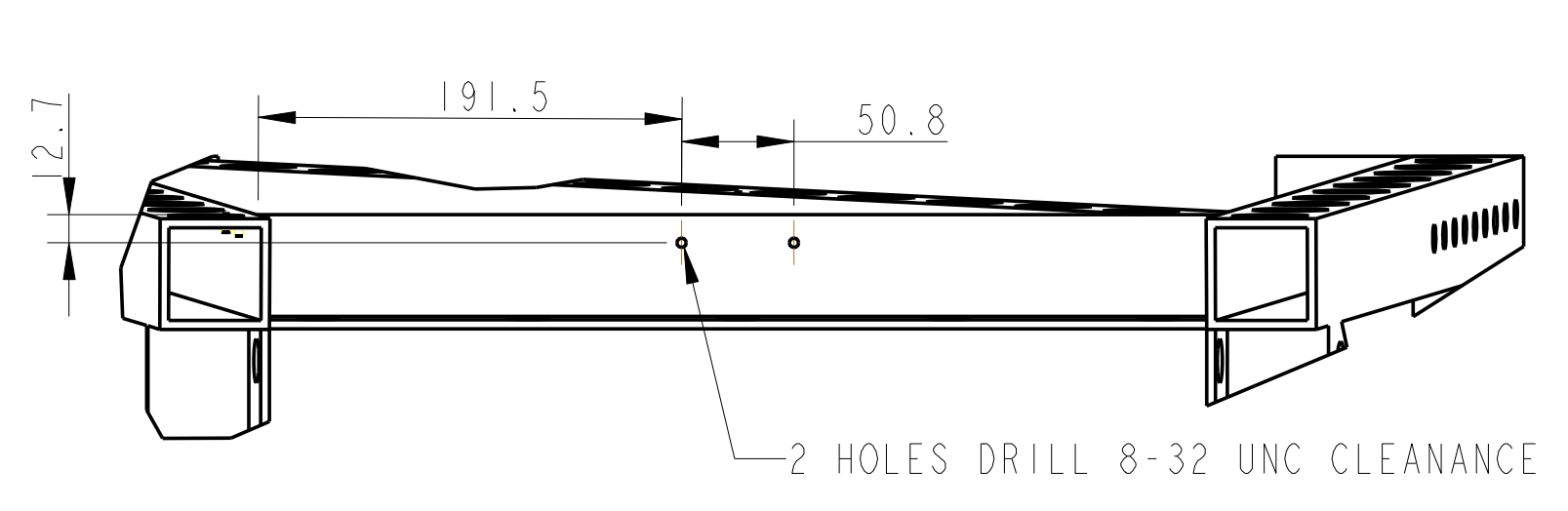
SECTION B-B

DRILL THRU  $\varnothing 8.5$ MM AND  
SPOT FACE 10 POSITIONS  
(SEE DETAIL D)  
⊕  $\varnothing 0.4$

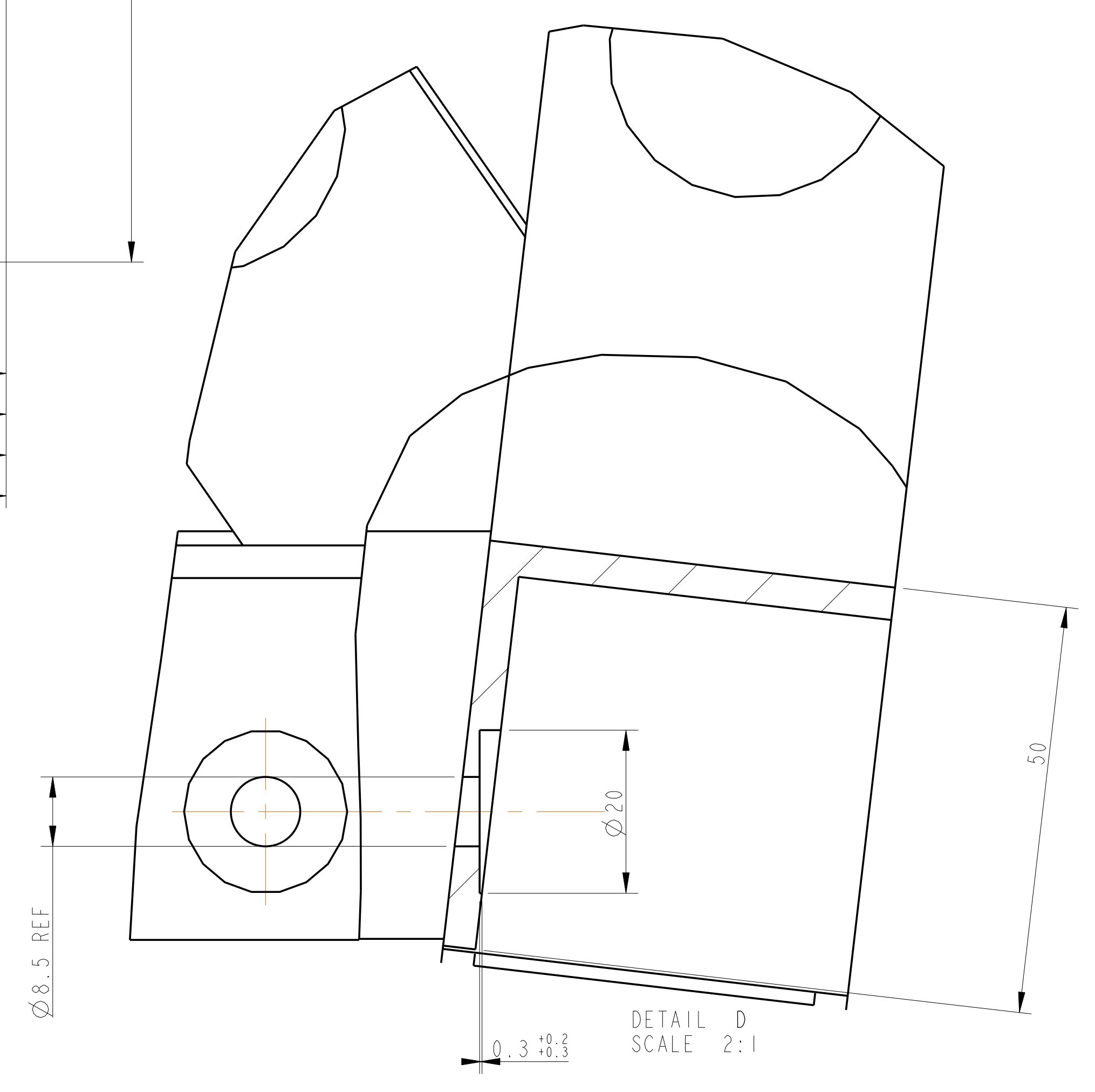
DRILL THRU  $\varnothing 8.5$ MM AND  
SPOT FACE 8 POSITIONS  
(SEE DETAIL D)  
⊕  $\varnothing 0.4$



DETAIL A SCALE 2:1



2 HOLES DRILL 8-32 UNC CLEANANCE THROUGH



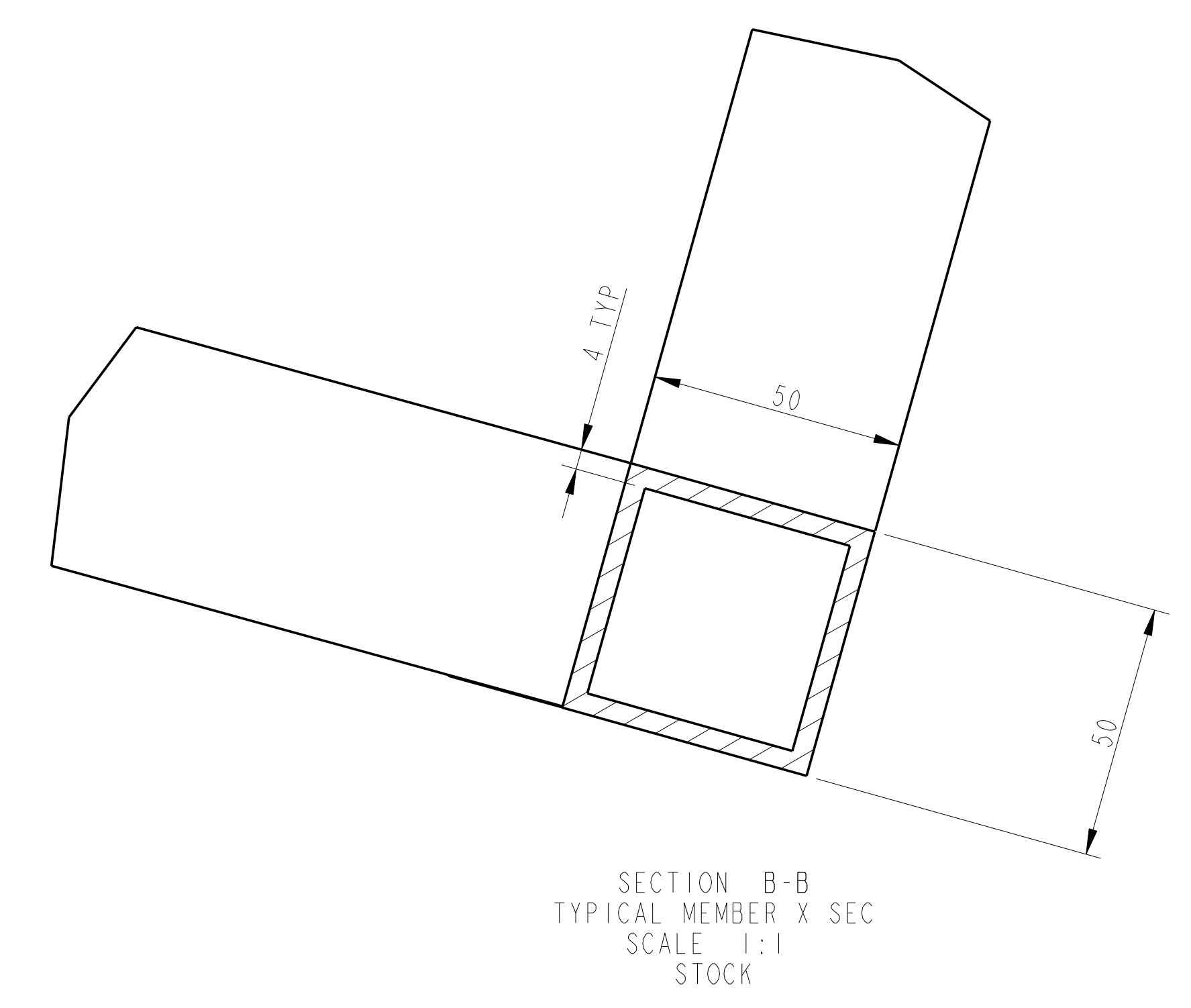
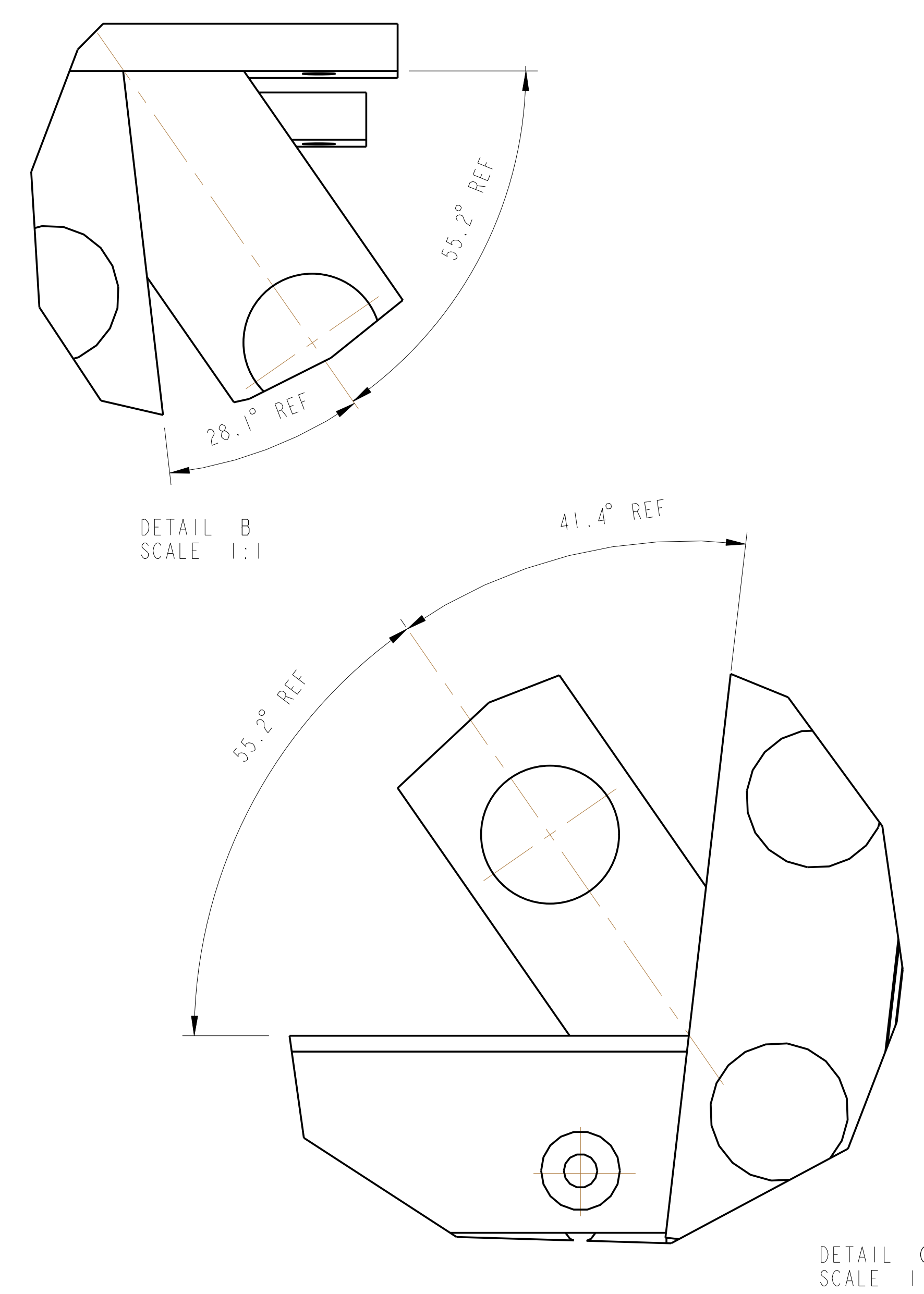
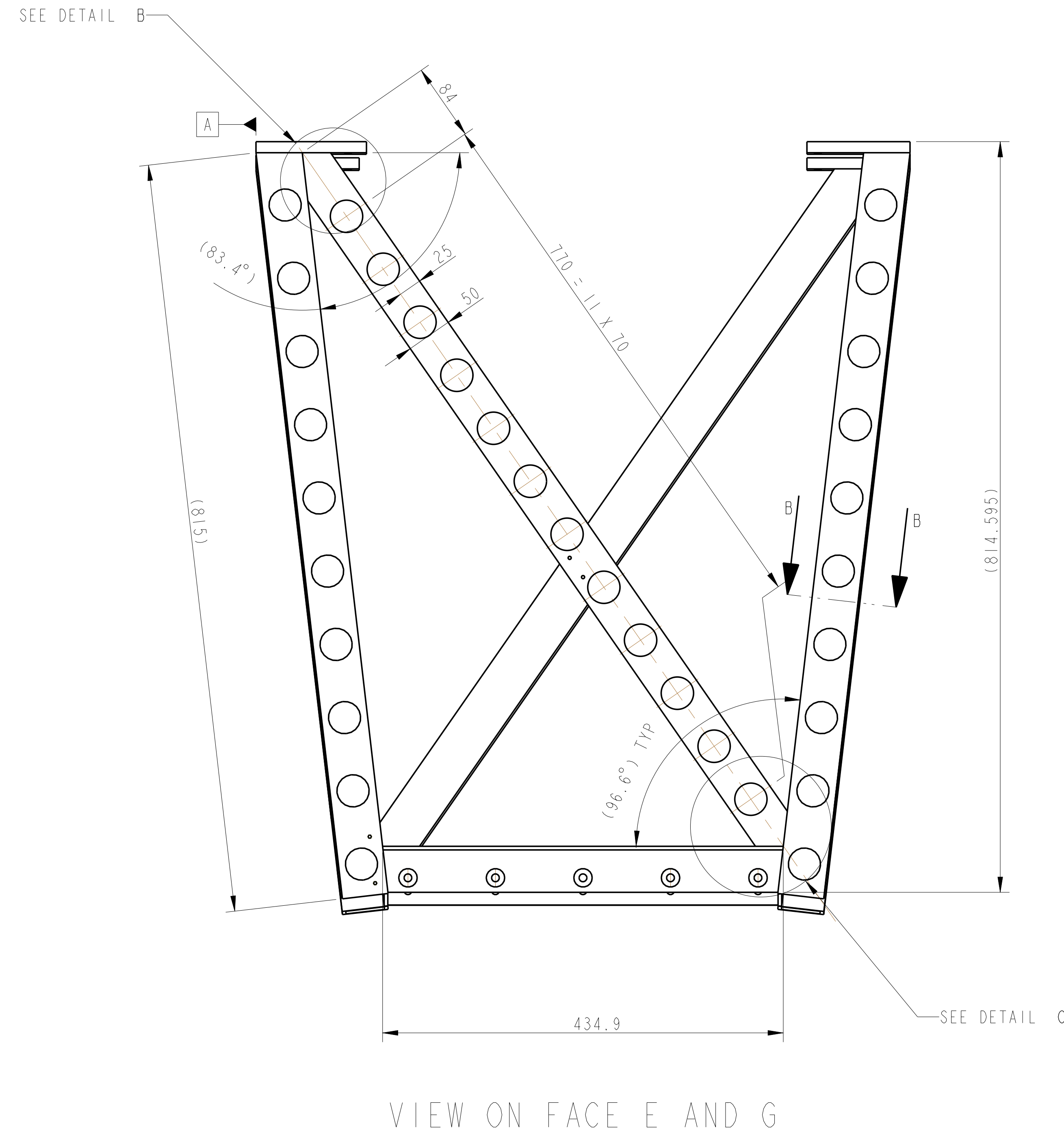
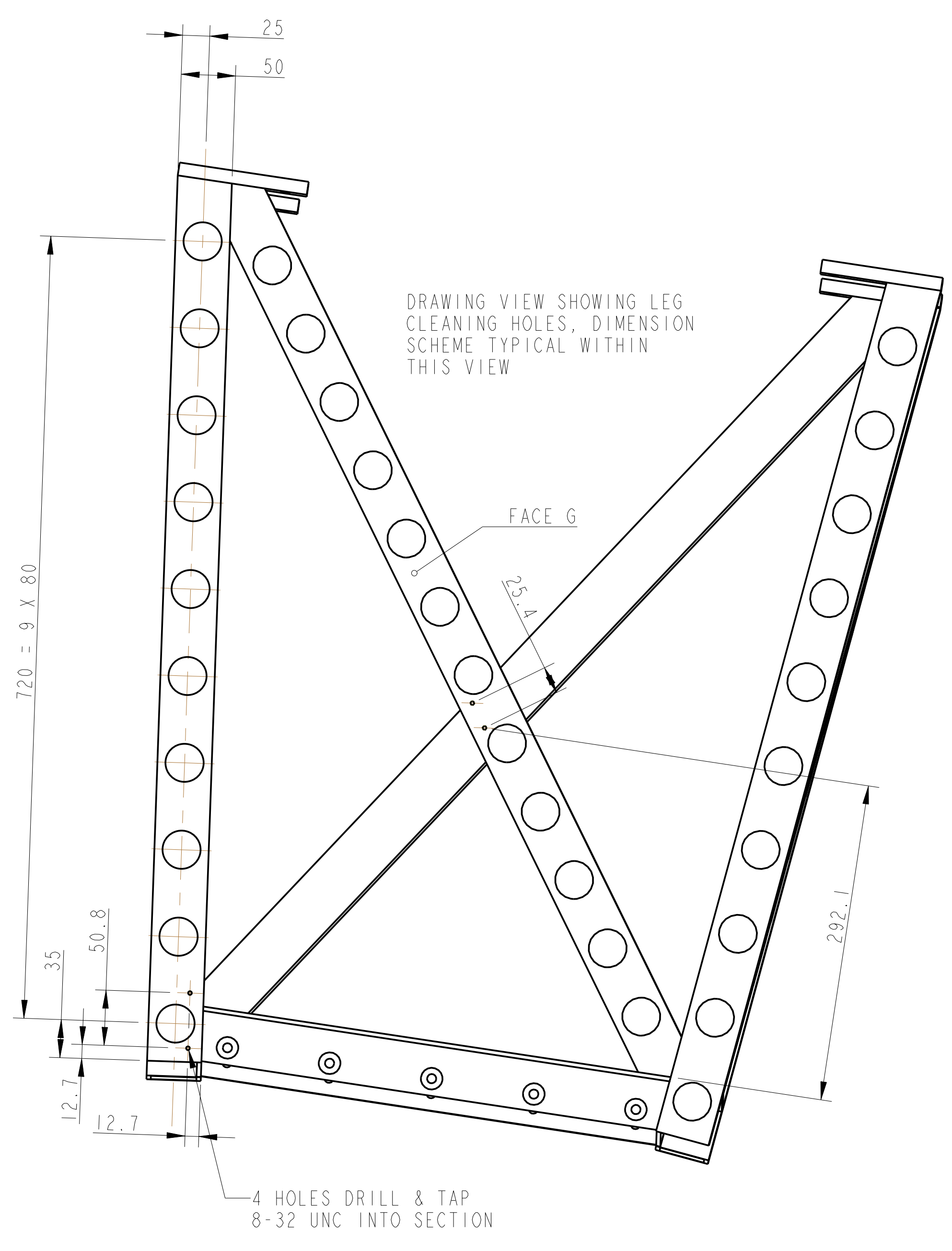
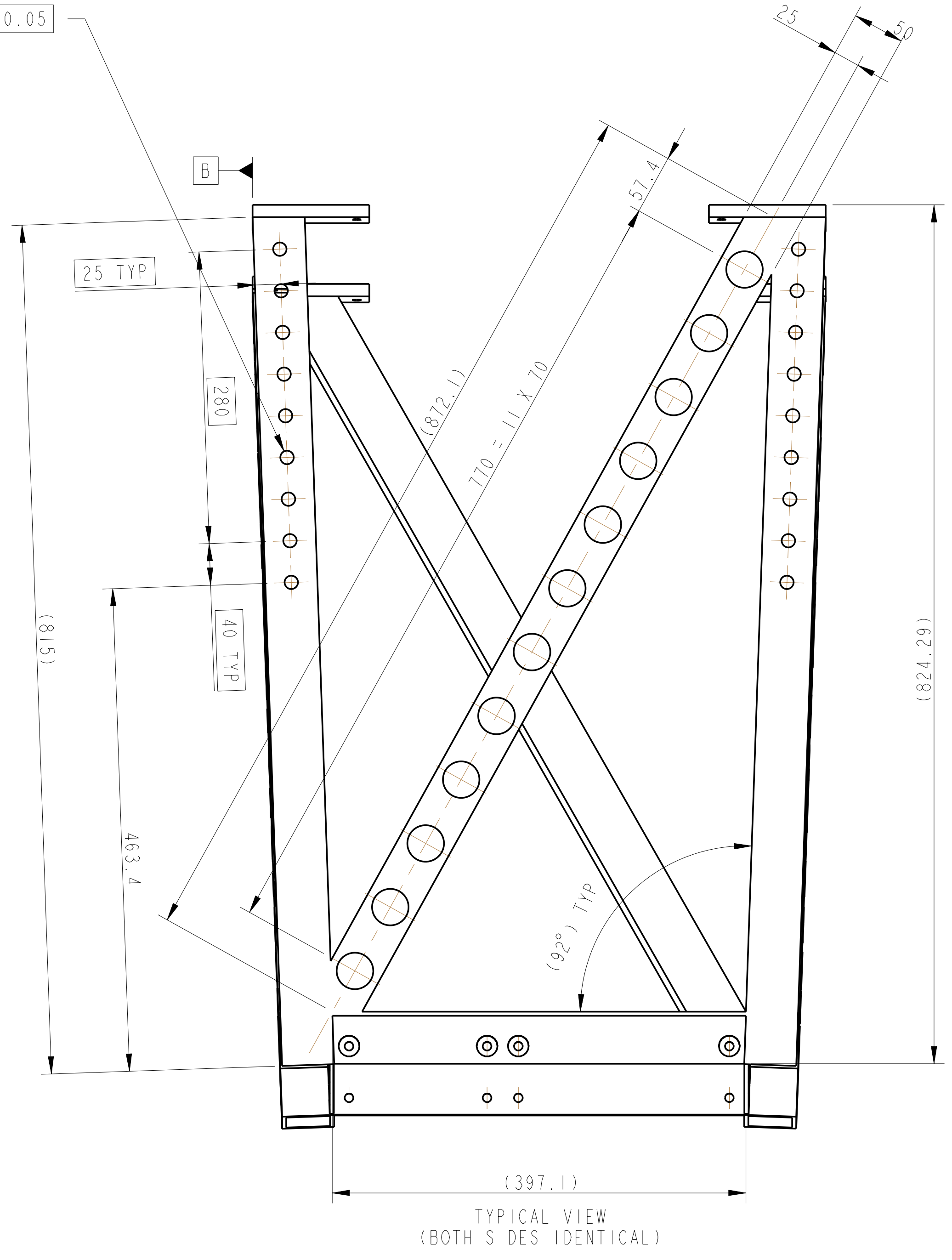
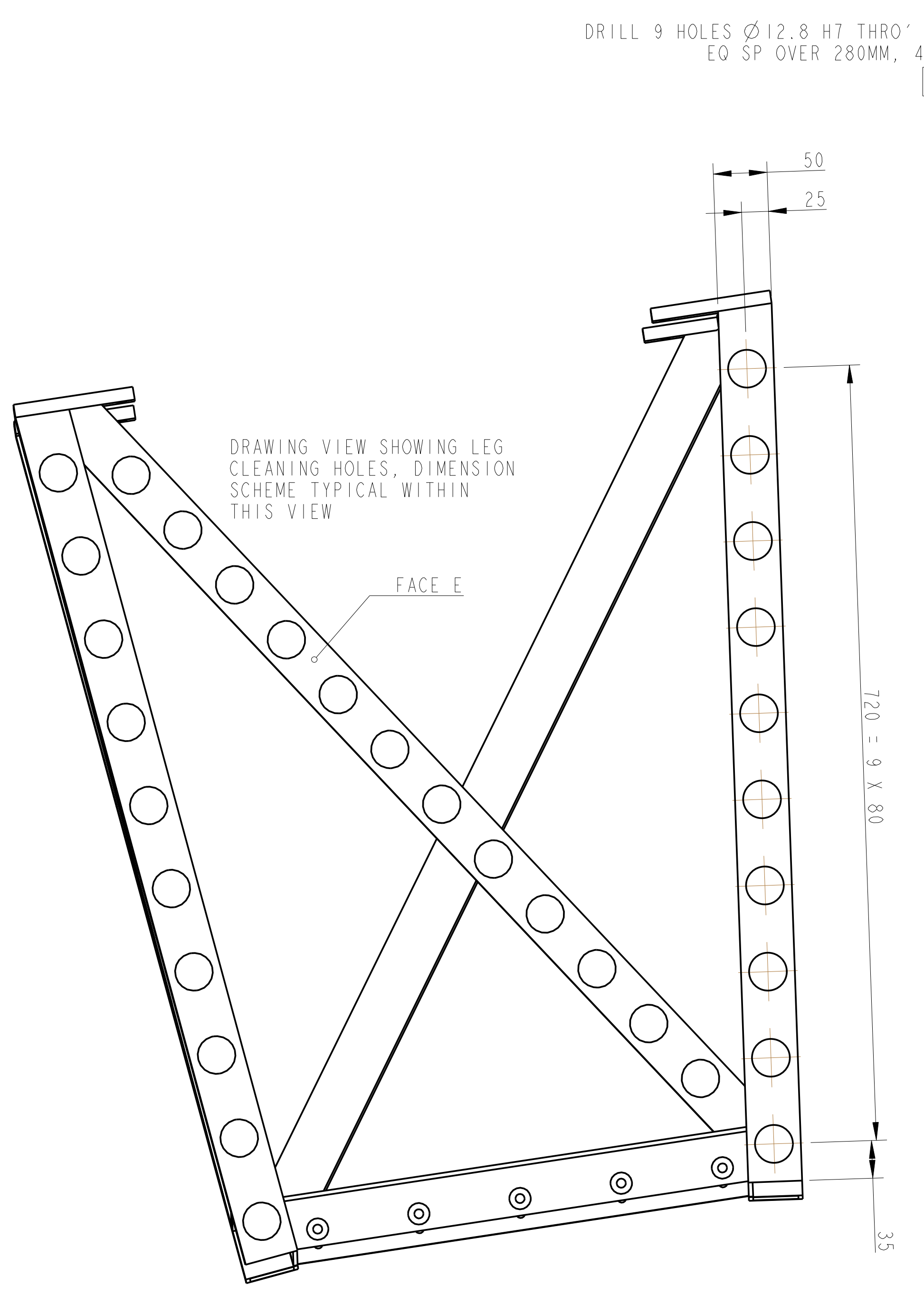
DETAIL D SCALE 2:1

NOTES: UNLESS OTHERWISE SPECIFIED:

- REMOVE ALL SHARP EDGES.
- ALL DIMENSIONS ARE IN MILLIMETERS UNLESS OTHERWISE SPECIFIED.
- ALL DIMENSIONS ARE IN INCHES UNLESS OTHERWISE SPECIFIED.
- ALL DIMENSIONS ARE IN MILLIMETERS UNLESS OTHERWISE SPECIFIED.
- ALL DIMENSIONS ARE IN MILLIMETERS UNLESS OTHERWISE SPECIFIED.
- ALL DIMENSIONS ARE IN MILLIMETERS UNLESS OTHERWISE SPECIFIED.
- ALL DIMENSIONS ARE IN MILLIMETERS UNLESS OTHERWISE SPECIFIED.
- ALL DIMENSIONS ARE IN MILLIMETERS UNLESS OTHERWISE SPECIFIED.
- ALL DIMENSIONS ARE IN MILLIMETERS UNLESS OTHERWISE SPECIFIED.
- ALL DIMENSIONS ARE IN MILLIMETERS UNLESS OTHERWISE SPECIFIED.

DATE	REV.	BY	CHKD.	APP'D.	SCALE	SHEET NO.	TOTAL SHEETS

CALIFORNIA INSTITUTE OF TECHNOLOGY  
JPL SYSTEMS DIVISION  
PART NAME: ITM/ETM SLEEVE  
SUB-SYSTEM: SUS  
REV: 1  
DATE: 05/05/00  
DRAWN: J. L. HARRIS  
CHECKED: J. L. HARRIS  
APPROVED: J. L. HARRIS



NOTES: UNLESS OTHERWISE SPECIFIED:		CALIFORNIA INSTITUTE OF TECHNOLOGY	
1. REMOVE ALL SHARP EDGES.	2. DIMENSIONS ARE IN INCHES UNLESS OTHERWISE SPECIFIED.	CALIFORNIA INSTITUTE OF TECHNOLOGY	
3. ALL DIMENSIONS FOR THIS DRAWING ARE TO BE TAKEN FROM THE CENTERLINE UNLESS OTHERWISE SPECIFIED.	4. SURFACE FINISH IS TO BE AS SHOWN UNLESS OTHERWISE SPECIFIED.	CALIFORNIA INSTITUTE OF TECHNOLOGY	
5. ALL WORKING DIMENSIONS ARE TO BE TAKEN FROM THE CENTERLINE UNLESS OTHERWISE SPECIFIED.	6. SURFACE FINISH IS TO BE AS SHOWN UNLESS OTHERWISE SPECIFIED.	CALIFORNIA INSTITUTE OF TECHNOLOGY	
7. ALL DIMENSIONS ARE TO BE TAKEN FROM THE CENTERLINE UNLESS OTHERWISE SPECIFIED.	8. SURFACE FINISH IS TO BE AS SHOWN UNLESS OTHERWISE SPECIFIED.	CALIFORNIA INSTITUTE OF TECHNOLOGY	
9. ALL DIMENSIONS ARE TO BE TAKEN FROM THE CENTERLINE UNLESS OTHERWISE SPECIFIED.	10. SURFACE FINISH IS TO BE AS SHOWN UNLESS OTHERWISE SPECIFIED.	CALIFORNIA INSTITUTE OF TECHNOLOGY	
MATERIAL: 304 STAINLESS STEEL		SYSTEM: ADVANCED LIQO	SUB-SYSTEM: SUS
FINISH: CLEAN AND POLISH		PART NAME: ITEM/ITEM STRUCTURE	REV. NO. 0070552
DRAWN: [Signature]		DATE: [Date]	SHEET: 1 OF 1