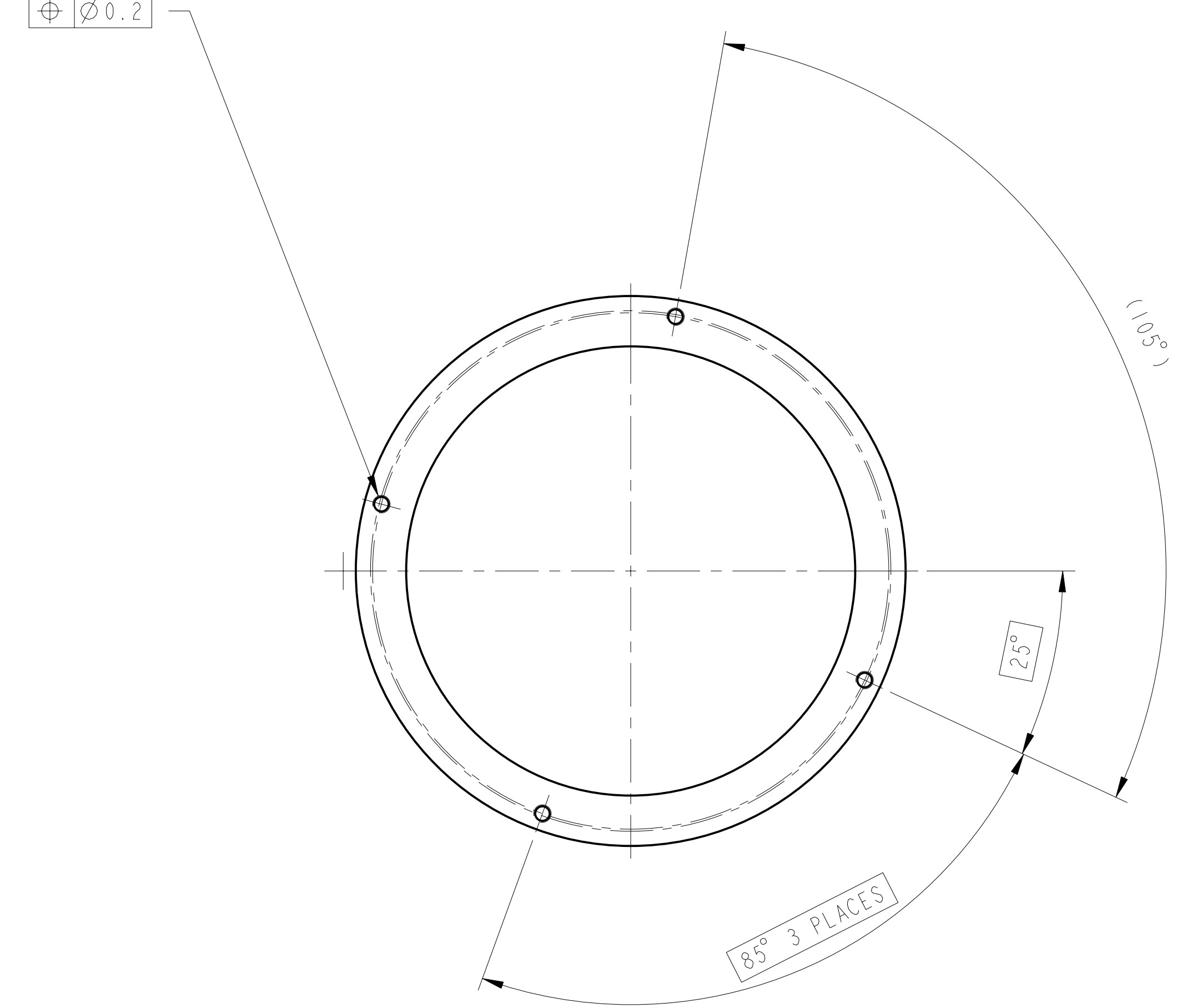
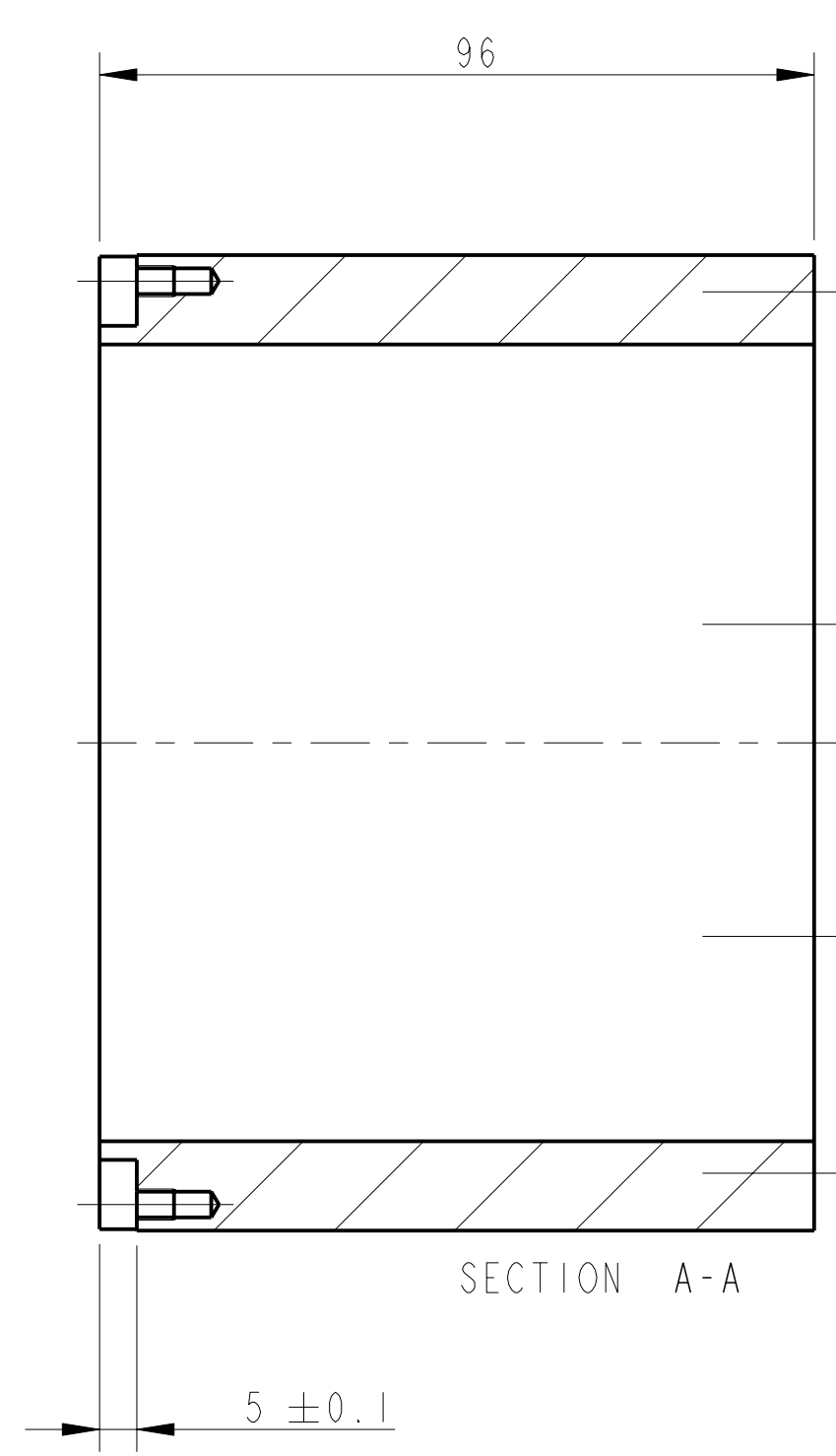
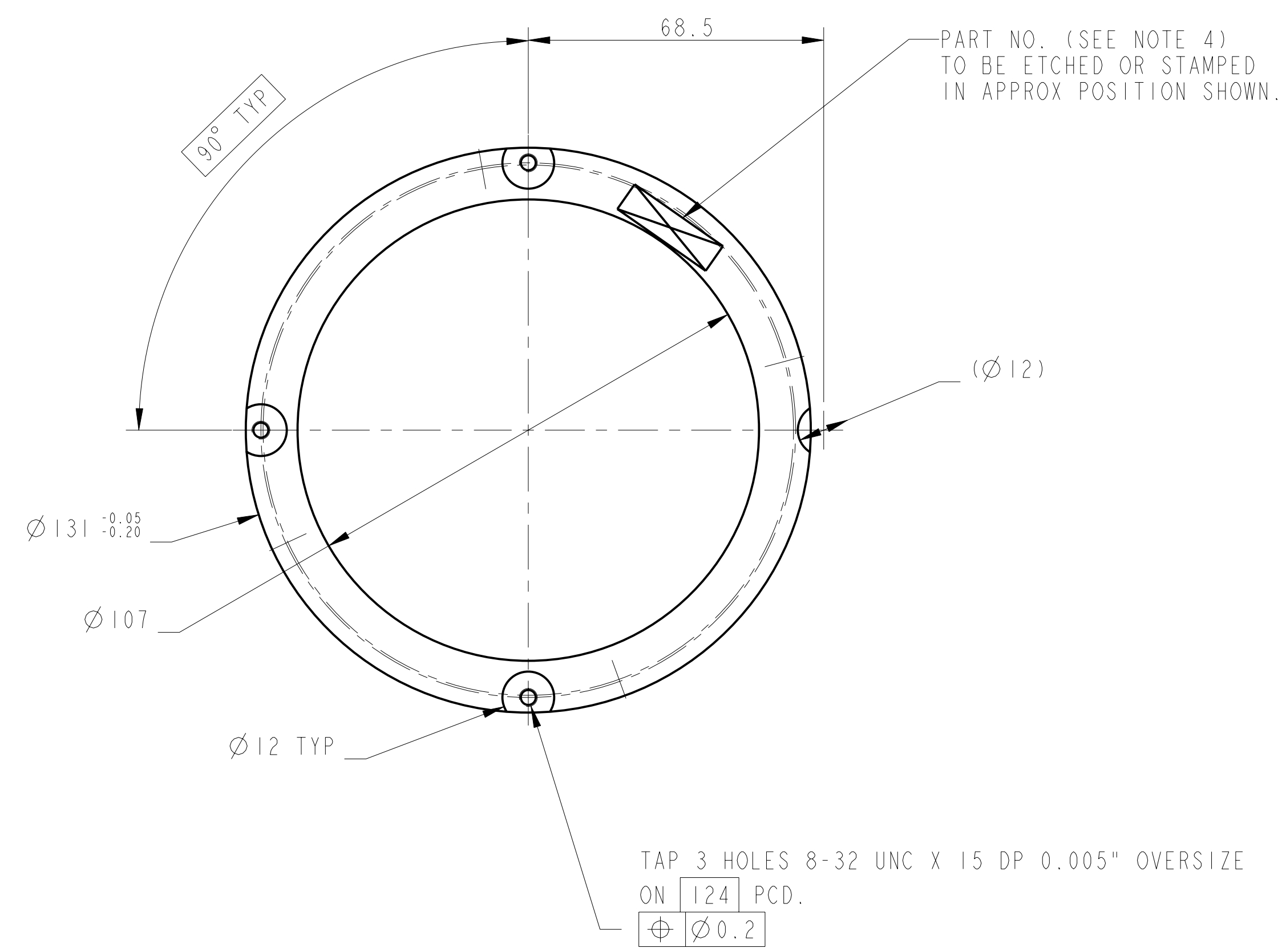


TAP 4 HOLES 8-32 UNC X 15 DP
 X 0.005" OVERSIZE ON $\boxed{123}$ PCD
 $\boxed{\varnothing 0.2}$



NOTES: (UNLESS OTHERWISE SPECIFIED)

- REMOVE ALL SHARP EDGES. R 0.2 MIN.
- DO NOT SCALE FROM DRAWING.
- ALL MACHINING FLUIDS SHALL BE WATER SOLUBLE AND FREE OF SULFUR, CHLORINE AND SILICONE. SUCH AS CINCINNATI MILACRON'S CIMTECH 410 (STAINLESS STEEL).
- SCRIBE, ENGRAVE OR STAMP DRAWING PART NUMBER ON NOTED SURFACE OF PART AND A THREE DIGIT SERIAL NUMBER. SERIAL NUMBERS START AT 001 FOR THE FIRST PART AND PROCEED CONSECUTIVELY. USE 07* HIGH CHARACTERS. EXAMPLE: 000100-001 - A VIBRATOR TOOL MAY BE USED.

DIMENSIONS ARE IN mm (INCHES)
 TOLERANCES:
 X XX ± .13
 ANGULAR ±0.25 °

MATERIAL: ST STEEL 300 SERIES

FINISH: CLEAN, GREASE FREE
 $\sqrt{\mu m}$ (μIN) Ra = 1.6

NAME	DATE
DRAWN J. O'DELL	09/04/08
CHECKED	---
APPROVED	---

SCALE 1:1 PROJECTION

CALIFORNIA INSTITUTE OF TECHNOLOGY
 MASSACHUSETTS INSTITUTE OF TECHNOLOGY
 RUTHERFORD APPLTON LABORATORIES

SYSTEM ADVANCED LIGO
 SUB-SYSTEM SUS
 NEXT ASSY PENRE ITM QUAD N-PTYPE
 PART NAME CAN BODY
 ITM PEN RE MASS CAN

DRG. NO. 0000168
 SHEET 1 OF 1