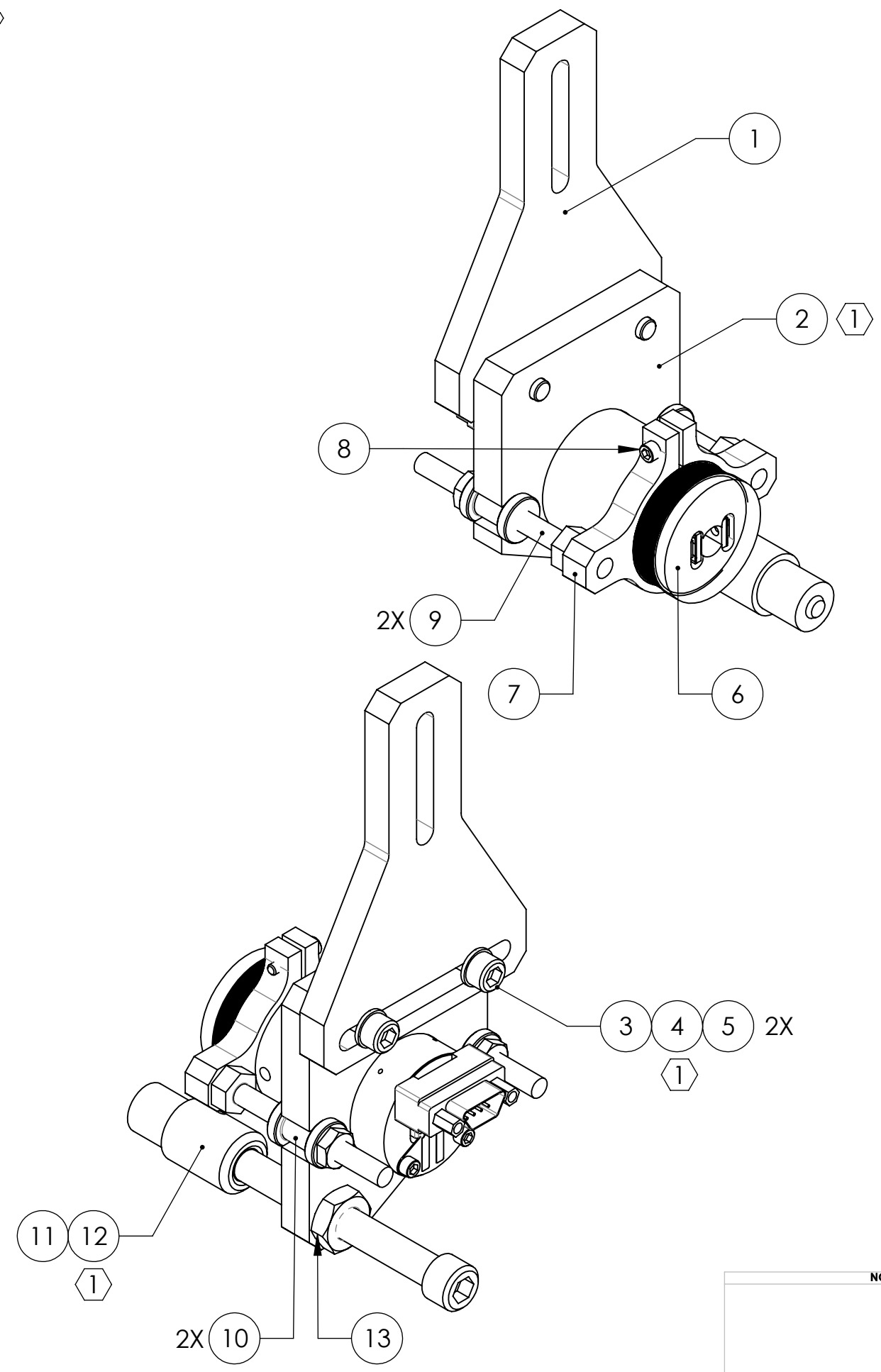


D0901552\_Advanced\_LIGO\_SUS\_HLTS\_Upper\_AOSEM\_Alignment\_Assembly\_Test\_Mass, PART PDM REV: V2-001, DRAWING PDM REV: V2-001

REV.	DATE	DCN #	DRAWING TREE #
v1	17 AUG 2009	E0900243	E080191
v2	02 DEC 2009	E0900446	E080191
v3	09 DEC 2010	E1000849	E080191



ITEM NO.	PART NUMBER	DESCRIPTION	MATERIAL	REQ	SPARE	TOTAL
13	-	JAM NUT, 1/4-20	300 SSSL	1	1	2
12	1185-4EN250	HELICOIL, 1/4-20 X 0.25 LONG <sup>①</sup>	NITRONIC 60	1	1	2
11	D080725	EARTHQUAKE STOP FOR METAL OR GLASS	N/A	1	0	1
10	D1002865	ADJUSTMENT NUT, THICK	PEEK	2	0	2
9	D1000659	ADJUSTER SHAFT	304, 316 OR 302 SSSL	2	0	2
8	-	SCREW, SOCKET HEAD CAP, #2-56 UNC-2A X 0.375 LONG	300 SSSL	1	1	2
7	D1002858	AOSEM ADJUSTMENT COLLAR (REVERSE SIDE)	6061-T6 Al	1	0	1
6	D0901065	AOSEM ASSEMBLY	N/A	1	0	1
5	-	WASHER, FLAT, VENTED, #8 (U-C COMPONENTS P/N WFV-08 OR EQUIVALENT)	300 SSSL	2	1	3
4	1185-2EN246	HELICOIL, #8-32 X 0.246 LONG <sup>①</sup>	NITRONIC 60	2	1	3
3	-	SCREW, SOCKET HEAD CAP, #8-32 UNC-2A X 0.625 LONG	300 SSSL	2	1	3
2	D0901549	AOSEM ALIGNMENT BRACKET, BOTTOM MASS <sup>①</sup>	6061-T6 Al	1	0	1
1	D0901550	UPPER AOSEM MOUNTING BRACKET, BOTTOM MASS	6061-T6 Al	1	0	1

PARTS LIST

NOTES AND TOLERANCES: (UNLESS OTHERWISE SPECIFIED)

<sup>①</sup> HELICOILS TO BE INSTALLED INTO ITEM NO. 2 BY LIGO AFTER ALL PARTS ARE CLEANED AND BAKED.

MATERIAL N/A FINISH N/A μinch

CALIFORNIA INSTITUTE OF TECHNOLOGY MASSACHUSETTS INSTITUTE OF TECHNOLOGY		PART NAME <b>UPPER AOSEM ALIGNMENT ASSY, BOTTOM MASS</b>	
SYSTEM <b>ADVANCED LIGO</b>	SUB-SYSTEM <b>SUS</b>	DESIGNER D. BRIDGES 13 DEC 2010	SIZE DWG. NO. <b>B</b>
DRAFTER D. BRIDGES 13 DEC 2010	CHECKER B. MOORE 14 DEC 2010	<b>D0901552</b>	
NEXT ASSY <b>HLTS OVERALL ASSY</b>	APPROVAL	SCALE: 1:1	PROJECTION:

REV. v3