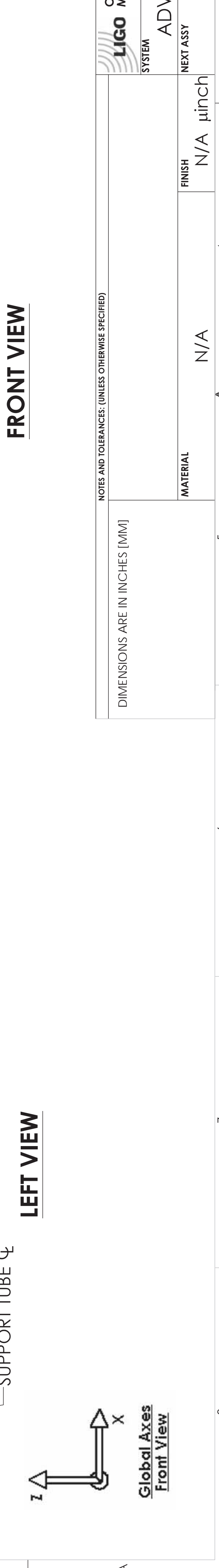
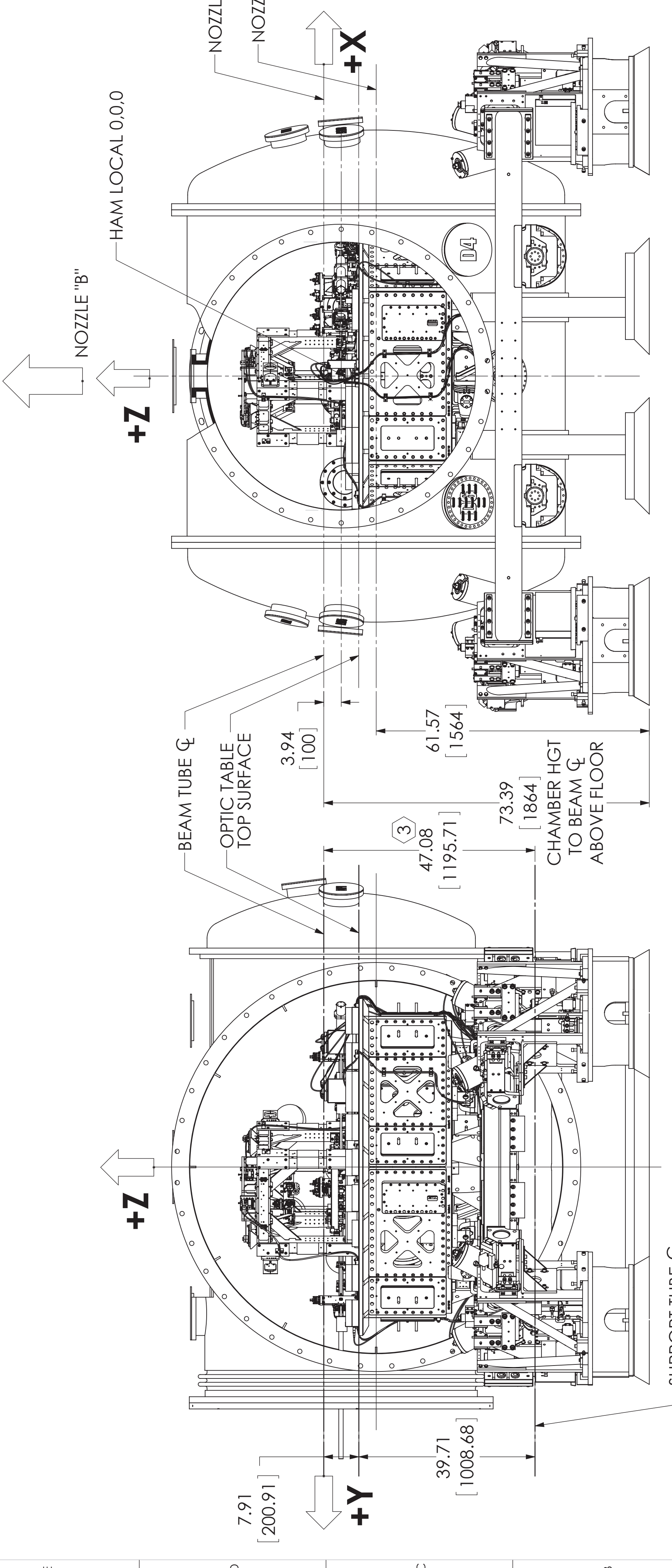
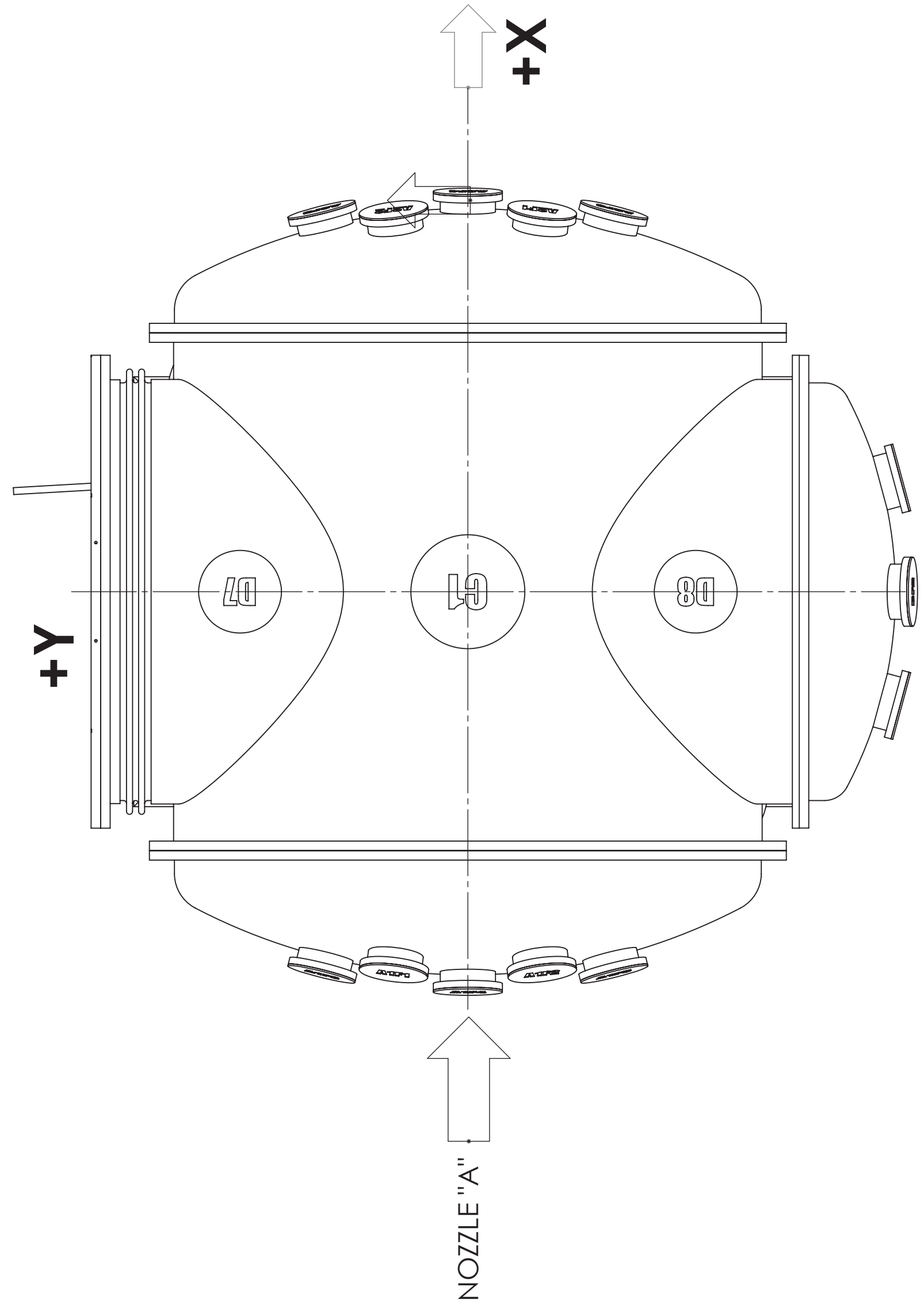
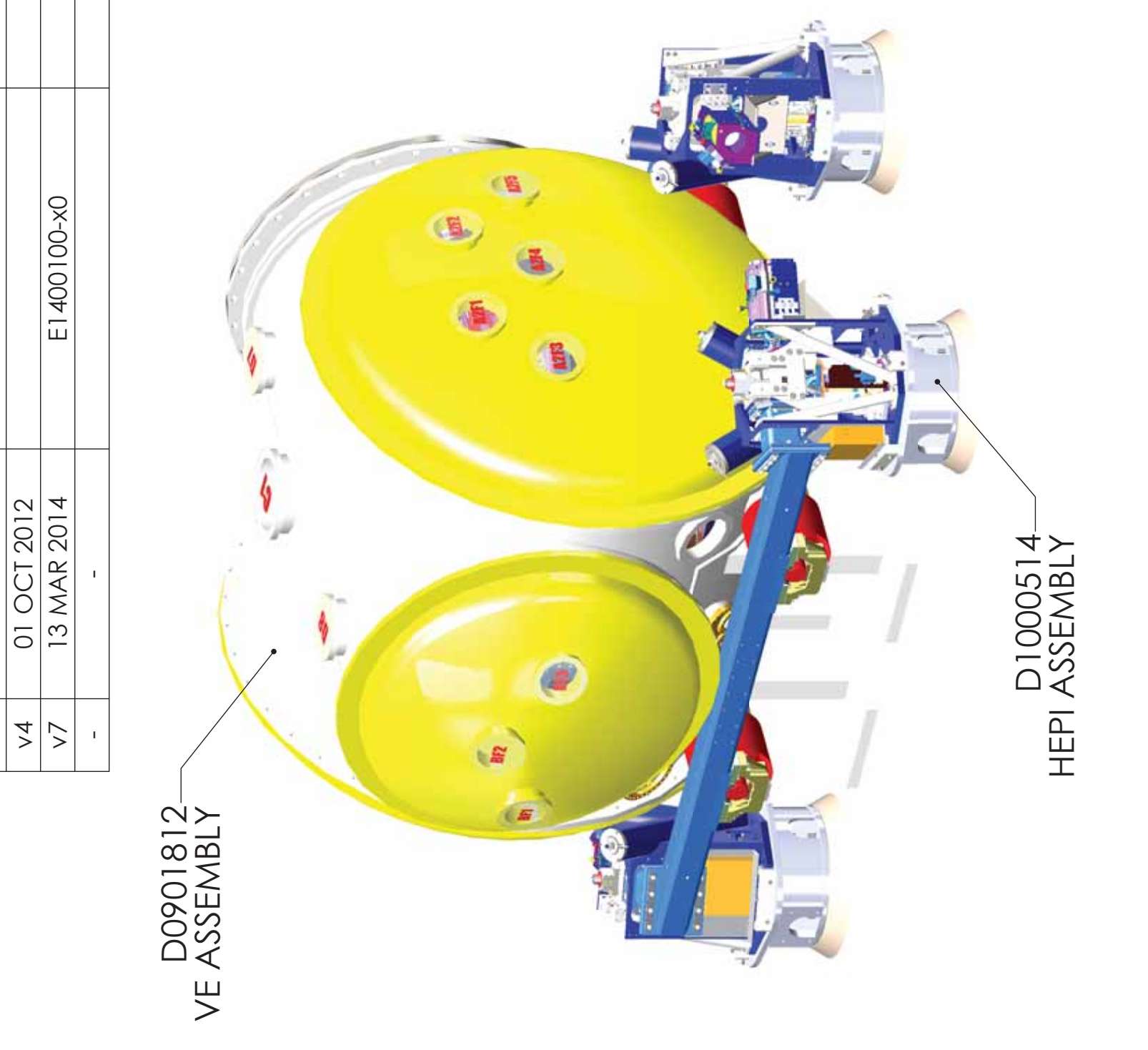


REV.	DATE	DESCRIPTION	DWG. NO.
V4	01 OCT 2012		E1400100-x0
V7	13 MAR 2014		



NOTES AND TOLERANCES: (UNLESS OTHERWISE SPECIFIED)

DIMENSIONS ARE IN INCHES (MM)

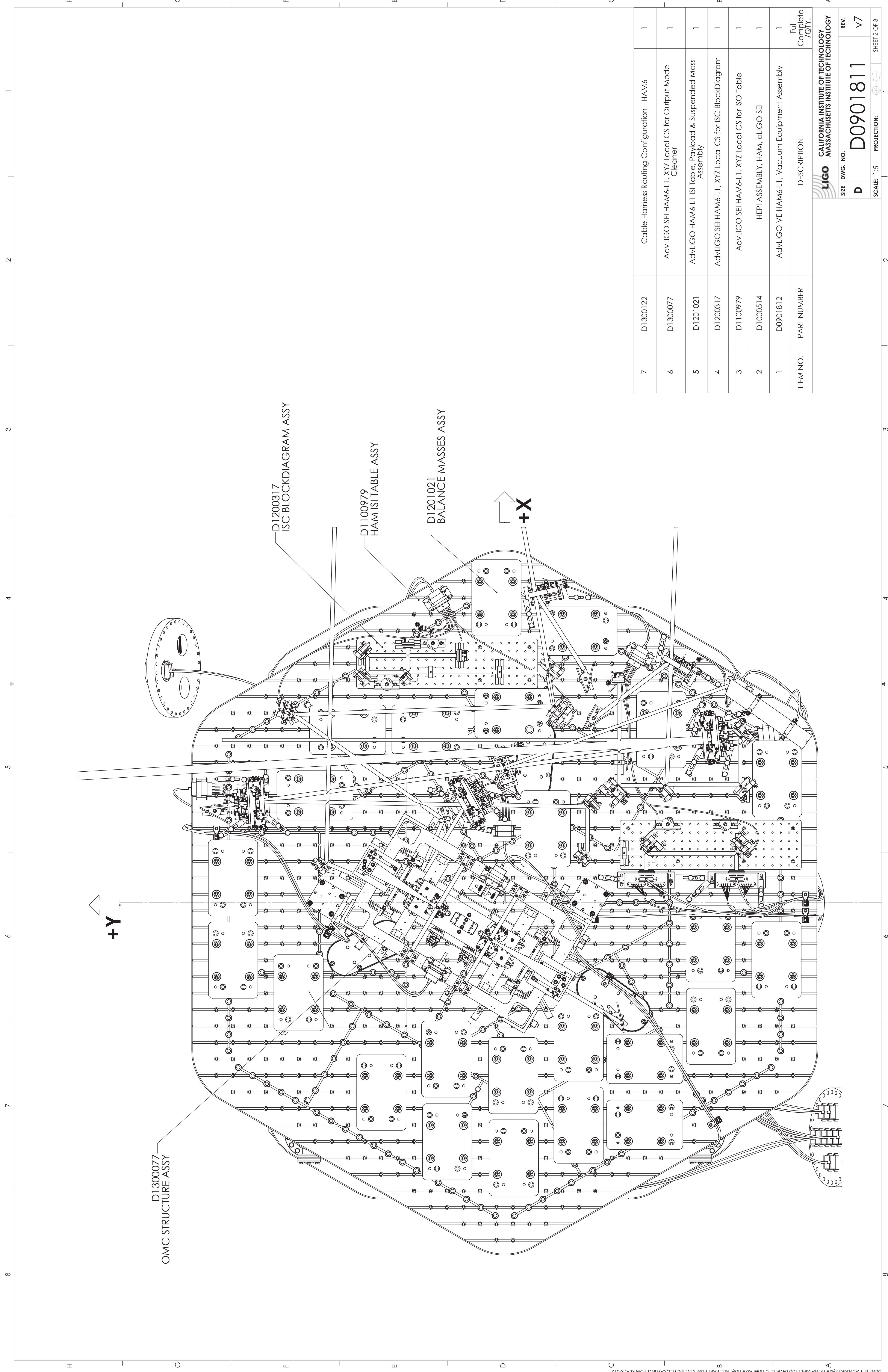
GLOBAL COORDINATES (mm)

X	0.0
Y	-22692.0
Z	0.0

PART NAME	AdvLIGO Systems, HAM6-L1 Top Level Chamber Assembly		
DESIGNER	SUS	SIZE	D
DRAWN	ED CHAVEZ	DATE	07 MAY 2012
CHECKER		DWG. NO.	D0901811
APPROVAL		SCALE	1:16
			SHEET 1 OF 3

- REFER TO G1000125 FOR IS NAMING AND ORIENTATION CONVENTION.
 - REFER TO T1100292 FOR VIEWPORT DEFINITION.
- 3 DIMENSION WRT TO LOCAL BUILDING CS. REFER TO E1200625 FOR LOCAL COORDINATES OF SUPPORT TUBE ENDS.



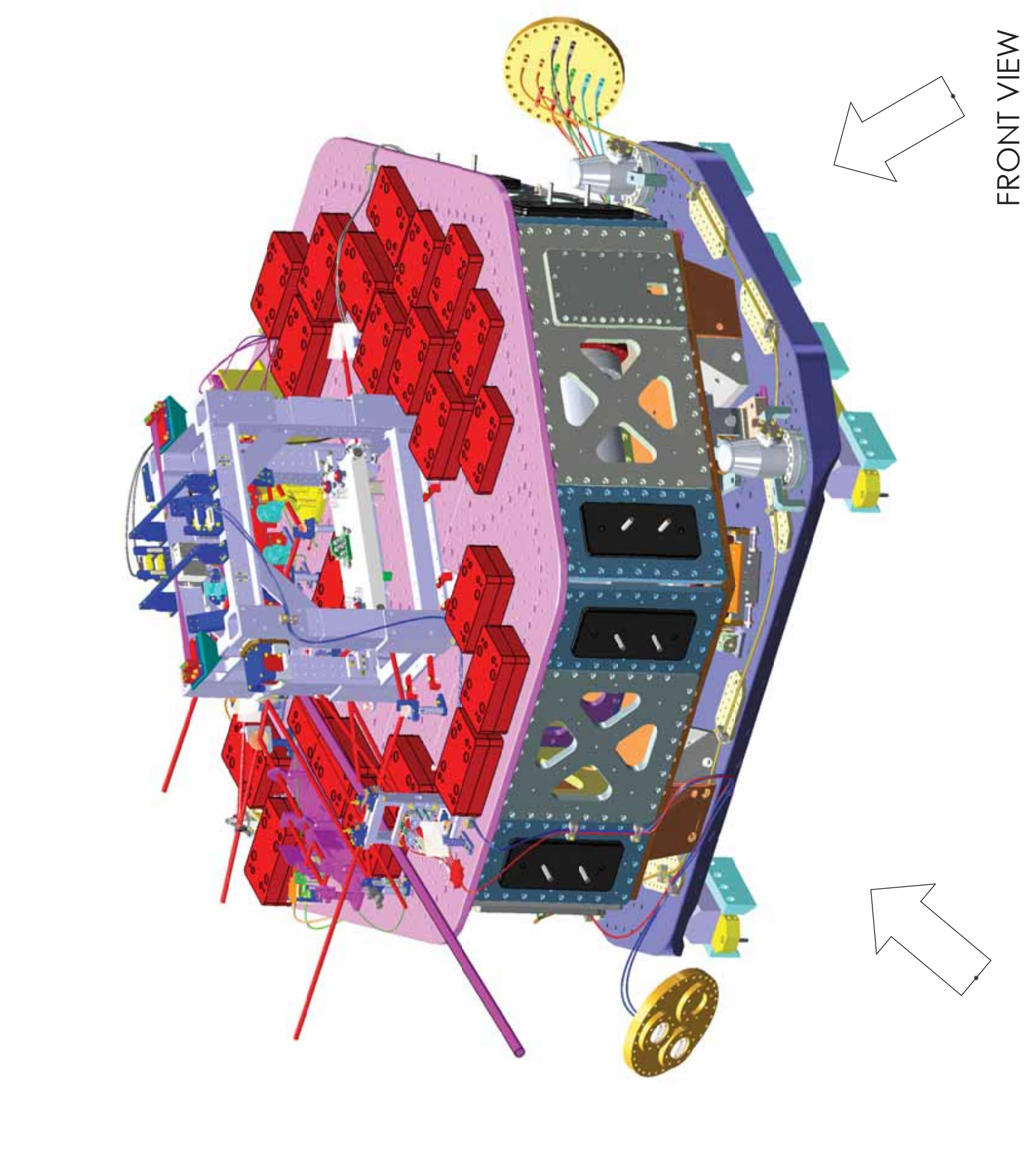
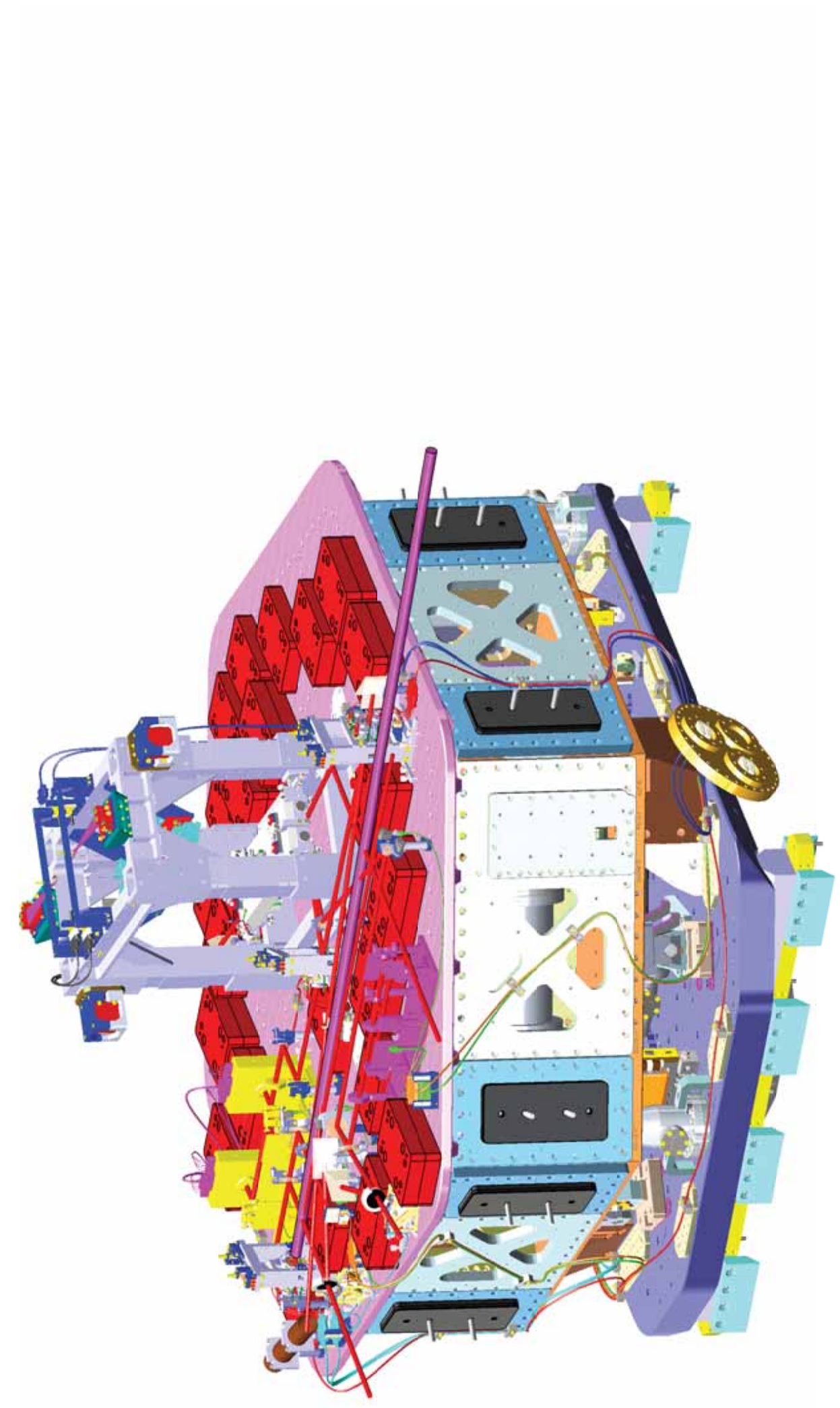


ITEM NO.	PART NUMBER	DESCRIPTION	Full Complete / QTY.
7	D1300122	Cable Harness Routing Configuration - HAM6	1
6	D1300077	AdvLIGO SEI HAM6-L1, XYZ Local CS for Output Mode Cleaner	1
5	D1201021	AdvLIGO HAM6-L1 ISI Table, Payload & Suspended Mass Assembly	1
4	D1200317	AdvLIGO SEI HAM6-L1, XYZ Local CS for ISC BlockDiagram	1
3	D1100979	AdvLIGO SEI HAM6-L1, XYZ Local CS for ISO Table	1
2	D1000514	HEPI ASSEMBLY, HAM, atLIGO SEI	1
1	D0901812	AdvLIGO VE HAM6-L1, Vacuum Equipment Assembly	1

LIGO
 CALIFORNIA INSTITUTE OF TECHNOLOGY
 MASSACHUSETTS INSTITUTE OF TECHNOLOGY

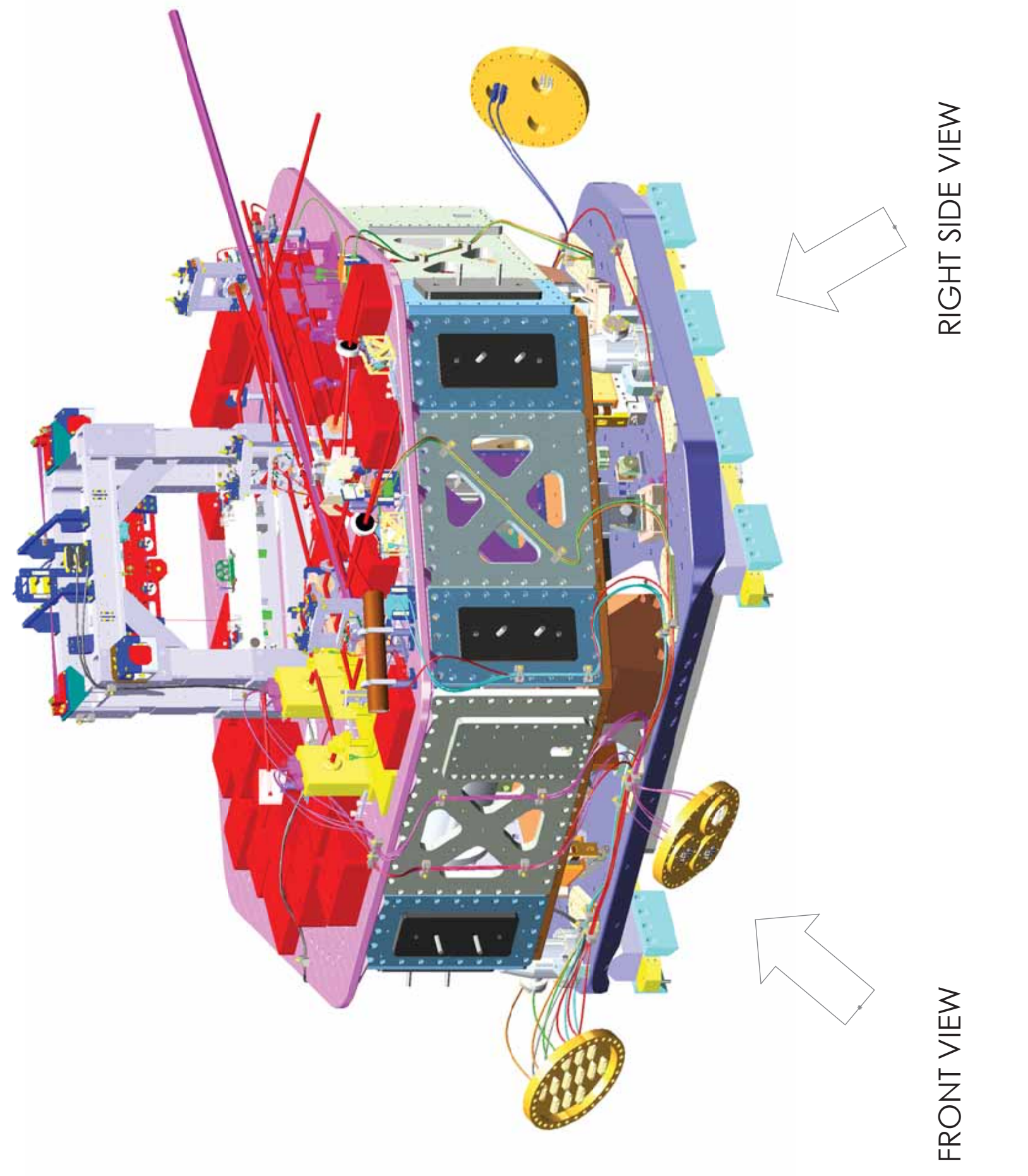
SIZE: D
 DWG. NO.: D0901811
 REV.: v7

SCALE: 1:5
 PROJECTION: SHEET 2 OF 3



FRONT VIEW

LEFT SIDE VIEW



RIGHT SIDE VIEW

FRONT VIEW

