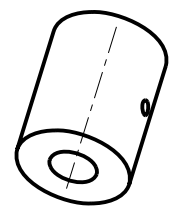
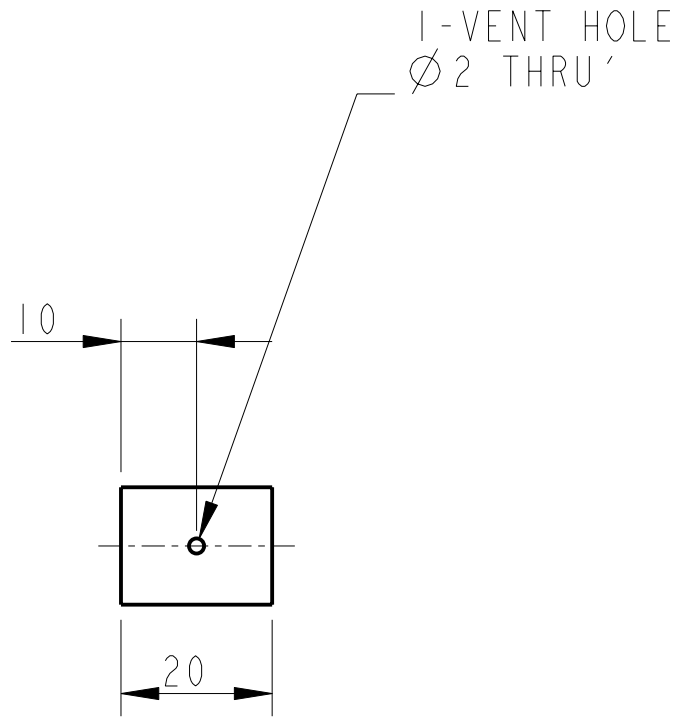
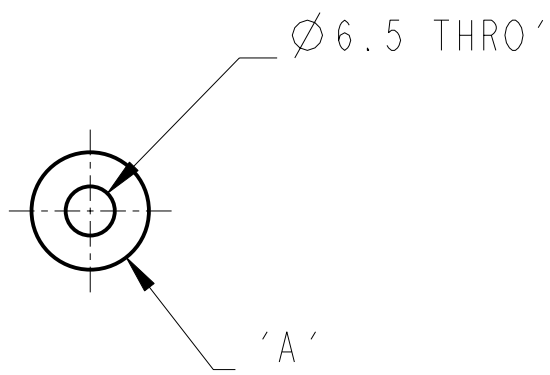


REV.	DATE	DCN #	DRAWING TREE #
A	15/OCT/06	E060240	.

	A	VARIANT
D060359-012_5	11.9	I
D060359-025_0	15.53	II
D060359-037_5	18.46	III
D060359-050_0	20.98	IV
D060359-062_5	23.23	V
D060359-075_0	25.28	VI
D060359-087_5	27.18	VII
D060359-100_0	28.95	VIII
D060359-200_0	40.42	XVI



3D VIEW



NOTES: (UNLESS OTHERWISE SPECIFIED)

- REMOVE ALL SHARP EDGES, R.02 MIN.
- DO NOT SCALE FROM DRAWING.
- ALL MACHINING FLUIDS SHALL BE WATER SOLUBLE AND FREE OF SULFUR, CHLORINE AND SILICONE, SUCH AS CINCINNATI MILACRON'S CIMTECH 410 (STAINLESS STEEL)
- SCRIBE, ENGRAVE OR STAMP DRAWING PARTNUMBER ON NOTED SURFACE OF PART AND A THREE DIGIT SERIAL NUMBER. SERIAL NUMBERS START AT 001 FOR THE FIRST PART AND PROCEED CONSECUTIVELY. USE .07" HIGH CHARACTERS. EXAMPLE: D020188- 001. A VIBRATORY TOOL MAY BE USED.

DIMENSIONS ARE IN mm [INCHES]	
TOLERANCES:	
X.XX ±0.2 mm	
ANGULAR ±0.25 °	
MATERIAL:	ST. STEEL 316
FINISH:	CLEAN, GREASE FREE
√μm [μin]	Ra = 1.6
NAME	DATE
DRAWN J O'DELL	11/NOV/05
CHECKED IW	15/SEPT/06
APPROVED IW	15/SEPT/06

Caltech CALIFORNIA INSTITUTE OF TECHNOLOGY
 MASSACHUSETTS INSTITUTE OF TECHNOLOGY
 IGR, GLASGOW UNIVERSITY GEO 600 GROUP
 RUTHERFORD APPLETON LABORATORIES

SYSTEM **ADVANCED LIGO**

SUB-SYSTEM **SUS**

NEXT ASSY **QUAD N-PTYPE**

PART NAME **ADDITIONAL MASS**

SIZE **A** DRG. NO. **D060359** REV **F.**

SCALE 1:1 PROJECTION: SHEET 1 OF 1