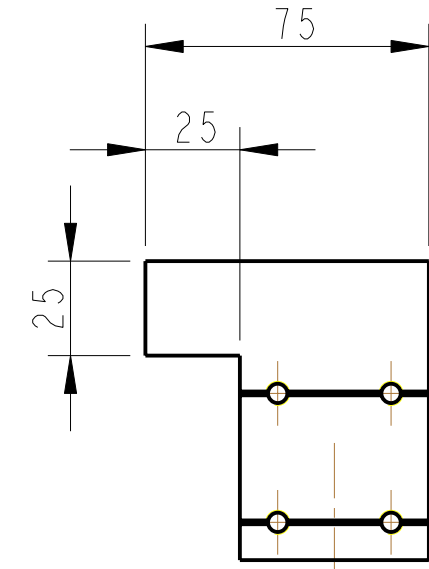
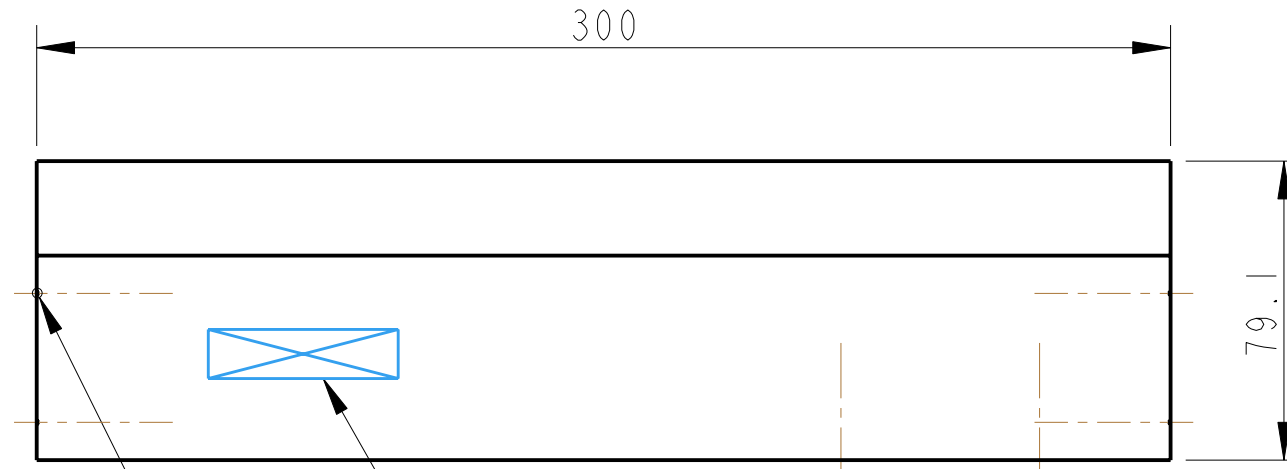
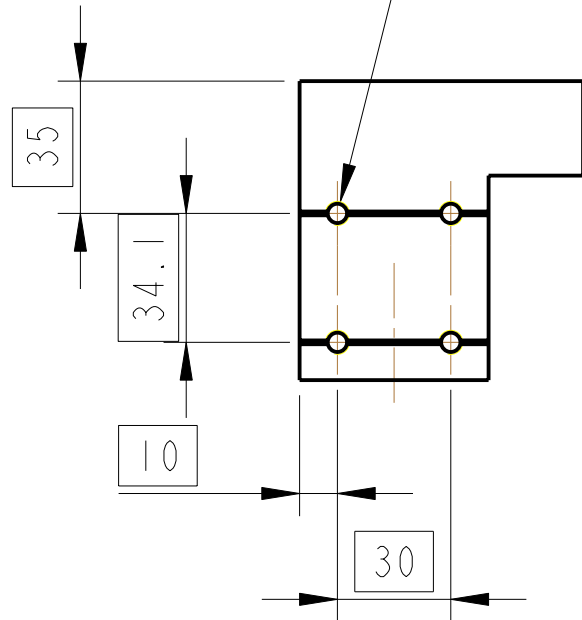


TAP 4 HOLES 1/4-20 UNC X 30DP
2 POSITIONS

$\varnothing 0.2$

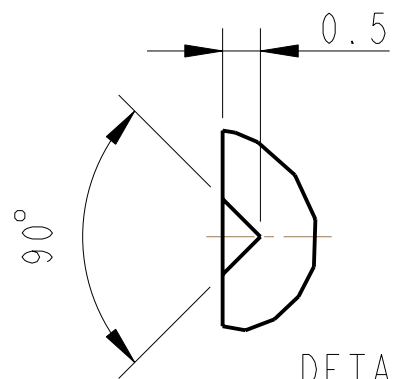
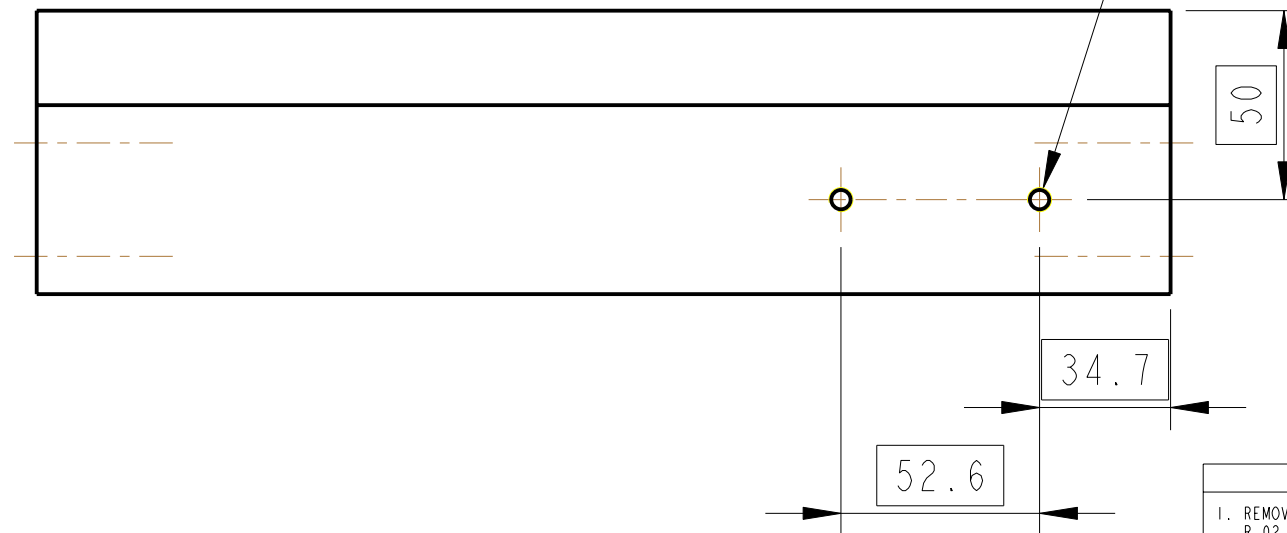


PART NO. (SEE NOTE 4) TO BE ETCHED OR STAMPED IN APPROX. POSITION SHOWN

SEE DETAIL A

TAP 2 HOLES 1/4-20 UNC THRO'

$\varnothing 0.2$



DETAIL A
SCALE 10:1
TYP

NOTES: (UNLESS OTHERWISE SPECIFIED)

- REMOVE ALL SHARP EDGES, R.02 MIN.
- DO NOT SCALE FROM DRAWING.
- ALL MACHINING FLUIDS SHALL BE WATER SOLUBLE AND FREE OF SULFUR, CHLORINE AND SILICONE, SUCH AS CINCINNATI MILACRON'S CIMTECH 410 (STAINLESS STEEL)
- SCRIBE, ENGRAVE OR STAMP DRAWING PART NUMBER ON NOTED SURFACE OF PART AND A THREE DIGIT SERIAL NUMBER. SERIAL NUMBERS START AT 001 FOR THE FIRST PART AND PROCEED CONSECUTIVELY. USE .07" HIGH CHARACTERS. EXAMPLE: D020188- 001. A VIBRATORY TOOL MAY BE USED.

DIMENSIONS ARE IN mm [INCHES]	
TOLERANCES:	
X.XX ±0.2 mm	
ANGULAR ±0.25 °	
MATERIAL: AL ALLOY 5083 OR SIMILAR	
FINISH: CLEAN, GREASE FREE	
√μm [μin] Ra = 1.6	
NAME	DATE
DRAWN J O'DELL	01/SEP/08
CHECKED AJB	03/SEP/08
APPROVED JOD	03/SEP/08

CALIFORNIA INSTITUTE OF TECHNOLOGY MASSACHUSETTS INSTITUTE OF TECHNOLOGY IGR, GLASGOW UNIVERSITY GEO 600 GROUP RUTHERFORD APPLETON LABORATORIES	
SYSTEM	ADVANCED LIGO
SUB-SYSTEM	SUS
NEXT ASSY	BS TRIPPLE SUS
PART NAME	BS US CROSS MEMBER BS UPPER STRUCTURE
SIZE	B
DRG. NO.	D080505
SCALE	1:2
PROJECTION	
SHEET	1 OF 1
REV	E