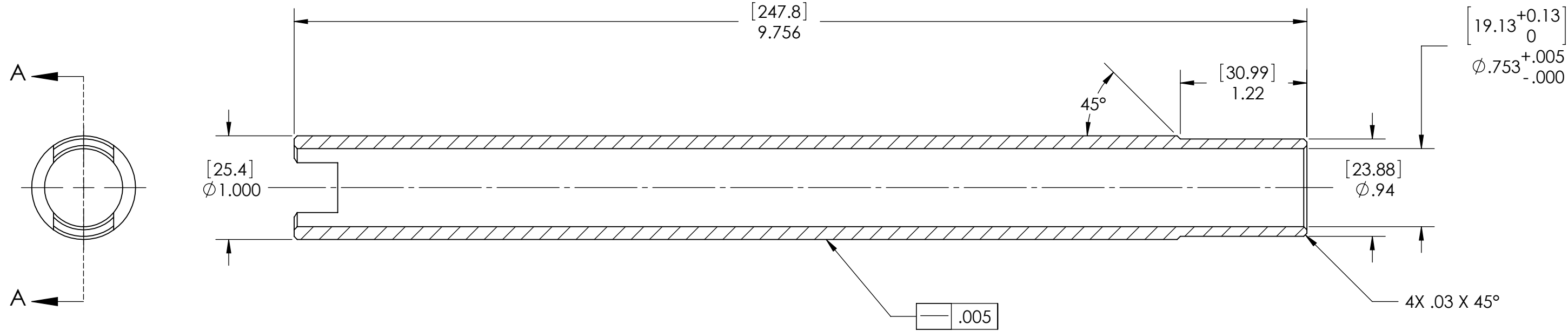


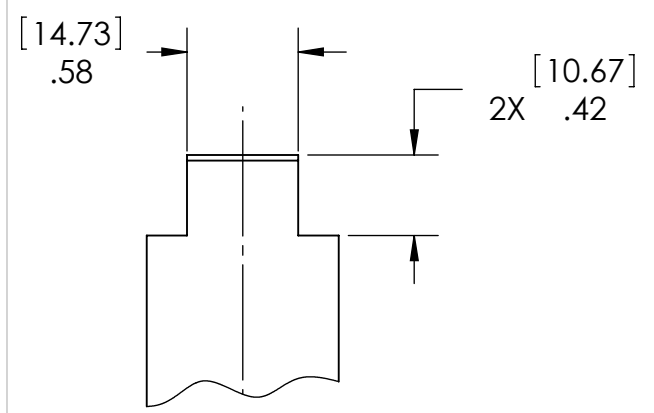
D0902150 LOCATING SLEEVE,ETM, COC CONTAINER, ADVANCED LIGO, PART PDM REV: X-004, DRAWING PDM REV: X-005

NOTES CONTINUED:
 ⑤ SCRIBE, ENGRAVE, OR MECHANICALLY STAMP (NO DYES OR INKS) A UNIQUE THREE DIGIT SERIAL NUMBER & REVISION NUMBER ON EACH PART. SERIAL NUMBERS START AT 001 FOR THE FIRST ARTICLE AND PROCEED CONSECUTIVELY. BAG AND TAG PARTS WITH THEIR DRAWING PART NUMBER, REVISION, VARIANT OR "TYPE" (IF APPLICABLE), AND QUANTITY. IF PARTS ARE TOO SMALL TO SCRIBE, BAGGING AND TAGGING ALONE IS SUFFICIENT.
 EXAMPLE (PART): 001-v1
 EXAMPLE (TAG): DXXXXXX-VY, TYPE-XX, QTY: TBD

REV.	DATE	DCN #	DRAWING TREE #
v1	21 OCT 2009	E0900367	
v2	29 APR 2010	E1000141	



SECTION A-A



NOTES AND TOLERANCES: (UNLESS OTHERWISE SPECIFIED)				LIGO CALIFORNIA INSTITUTE OF TECHNOLOGY MASSACHUSETTS INSTITUTE OF TECHNOLOGY		PART NAME	
DIMENSIONS ARE IN INCHES [MM] TOLERANCES: .XX ± .01 .XXX ± .005 ANGULAR ± 0.5°				1. INTERPRET DRAWING PER ASME Y14.5-1994. 2. REMOVE ALL SHARP EDGES, R.02 MIN. 3. DO NOT SCALE FROM DRAWING. 4. ALL MACHINING FLUIDS MUST BE FULLY SYNTHETIC, FULLY WATER SOLUBLE AND FREE OF SULFUR, SILICONE, AND CHLORINE.		LOCATING SLEEVE, ETM, COC CONTAINER	
						SYSTEM: ADVANCED LIGO SUB-SYSTEM: COC	
MATERIAL: PFA440 HP (PRESHRUNK)		FINISH: N/A μinch		NEXT ASSY: D0902146		DESIGNER: K. BUCKLAND 29 SEPT 2009 DRAFTER: K. BUCKLAND 29 SEPT 2009 CHECKER: K. MAILAND 21 OCT 2009 APPROVAL: C. TORRIE 21 OCT 2009	
				SIZE: B DWG. NO. D0902150		REV. v2	
				SCALE: 1:1 PROJECTION:		SHEET 1 OF 1	