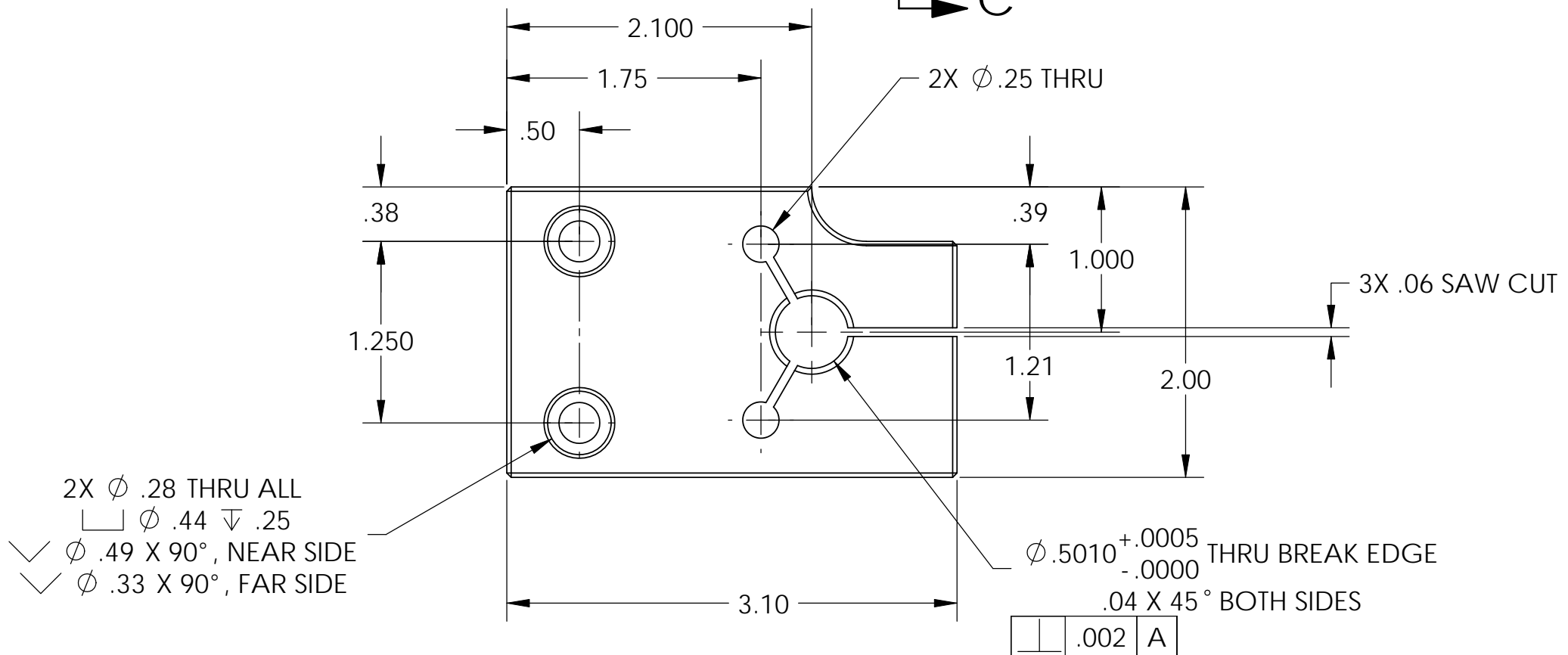
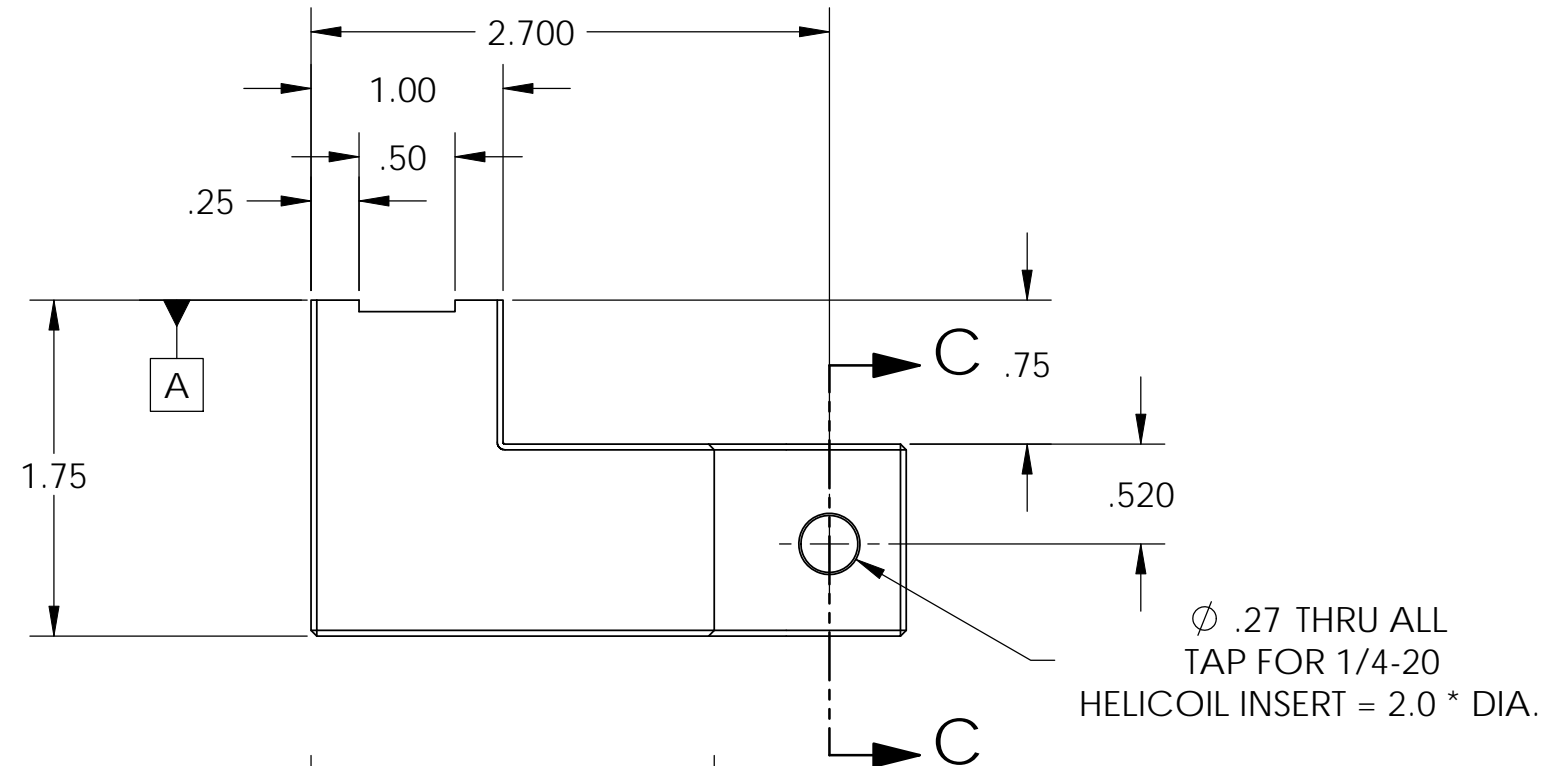
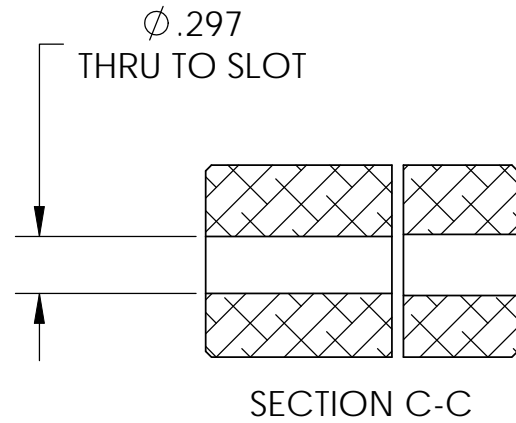


D0902252 STAGE 1-2 HORIZONTAL SENSOR TARGET MOUNT, PART PDM REV: X-009, DRAWING PDM REV: X-004

REV.	DATE	DCN #	DRAWING TREE #
v1	01 Mar. 2010	E1000049	E1000025

- NOTES CONTINUED:
5. SCRIBE, ENGRAVE, OR MECHANICALLY STAMP (NO INKS OR DYES) DRAWING PART NUMBER, REVISION (AND VARIANT OR "TYPE" IF APPLICABLE ON NOTED SURFACE OF PART FOLLOWED ON THE NEXT LINE WITH A THREE DIGIT SERIAL NUMBER. SERIAL NUMBERS START AT 001 FOR THE FIRST ARTICLE AND PROCEED CONSECUTIVELY. USE MINIMUM 0.12 HIGH CHARACTERS, UNLESS THE SIZE OF THE PART DICTATES SMALLER CHARACTERS. A VIBRATORY TOOL MAY BE USED. EXAMPLE DXXXXXX-VY, TYPE-XX, S/N XXX.
 6. APPROXIMATE WEIGHT = 0.64 LB.
 7. MACHINE ALL SURFACES TO REMOVE OXIDES AND MILL FINISH. USE OF ABRASIVE REMOVAL TECHNIQUES IS NOT ALLOWED.
 8. ALL PARTS SHALL BE MANUFACTURED IN ACCORDANCE WITH LIGO SPECIFICATION E0900364.
 9. ALL THREADED INSERTS TO BE INSTALLED BY LIGO PERSONNEL, AFTER DELIVERY OF FINISHED PARTS, USE NITRONIC 60 THREADED INSERTS.
 10. A TRUE POSITION TOLERANCE OF $\phi .010$ IS - THE SAME AS A CONVENTIONAL TOLERANCE OF $\pm .005$.



NOTES AND TOLERANCES: (UNLESS OTHERWISE SPECIFIED)				LIGO CALIFORNIA INSTITUTE OF TECHNOLOGY MASSACHUSETTS INSTITUTE OF TECHNOLOGY		PART NAME										
DIMENSIONS ARE IN INCHES				SYSTEM		STAGE 1-2 HORIZONTAL SENSOR TARGET MOUNT										
TOLERANCES: .XX $\pm .015$.XXX $\pm .005$				ADVANCED LIGO		SUB-SYSTEM		SEI		DESIGNER	S.BARNUM	01 Mar. 2010	SIZE	DWG. NO.	REV.	
ANGULAR $\pm .5^\circ$				MATERIAL		NEXT ASSY		D0902529		DRAFTER	M.HILLARD	01 Mar. 2010	B	D0902252	v1	
6061-T6 Al				FINISH		32 μ inch		D0902529		CHECKER	F.MATICHARD	01 Mar. 2010	SCALE	1:1	PROJECTION	SHEET 1 OF 1
APPROVAL				K.MASON		01 Mar. 2010		SCALE		1:1		PROJECTION		SHEET 1 OF 1		