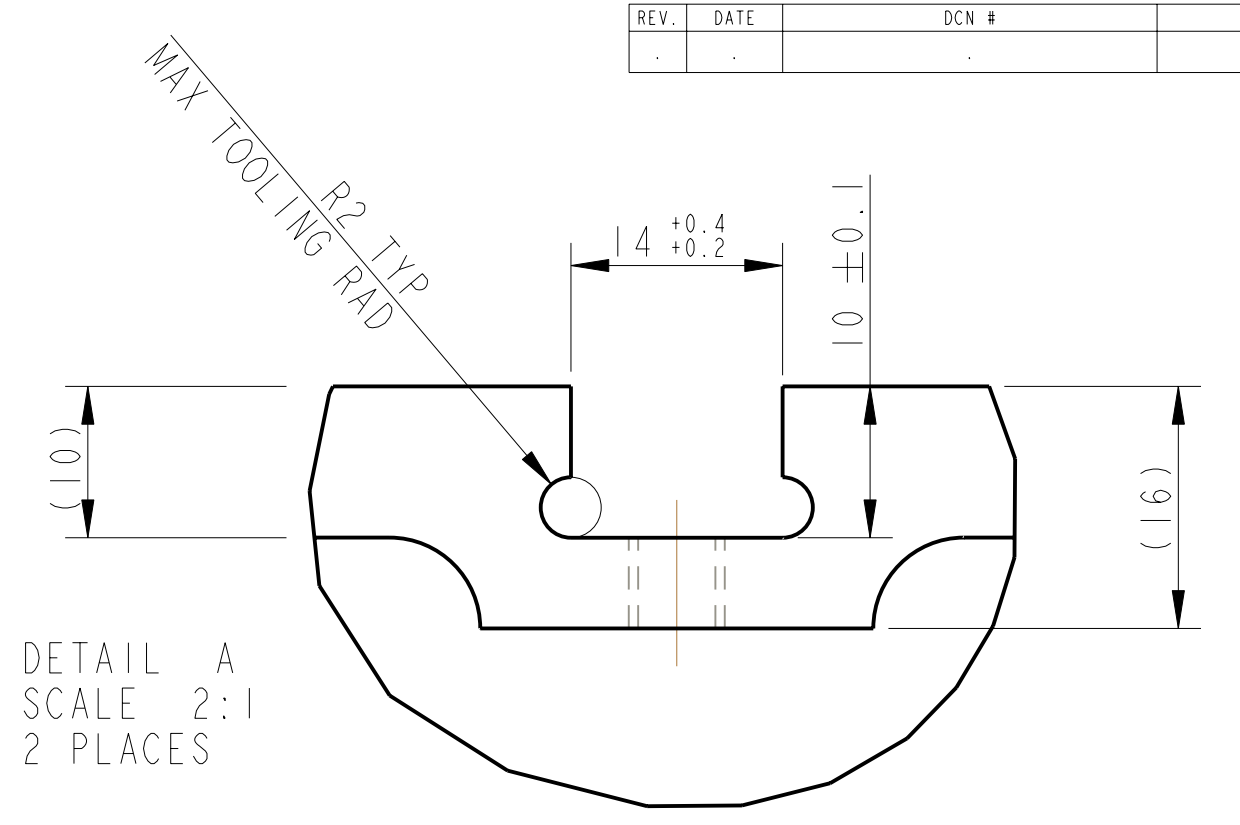
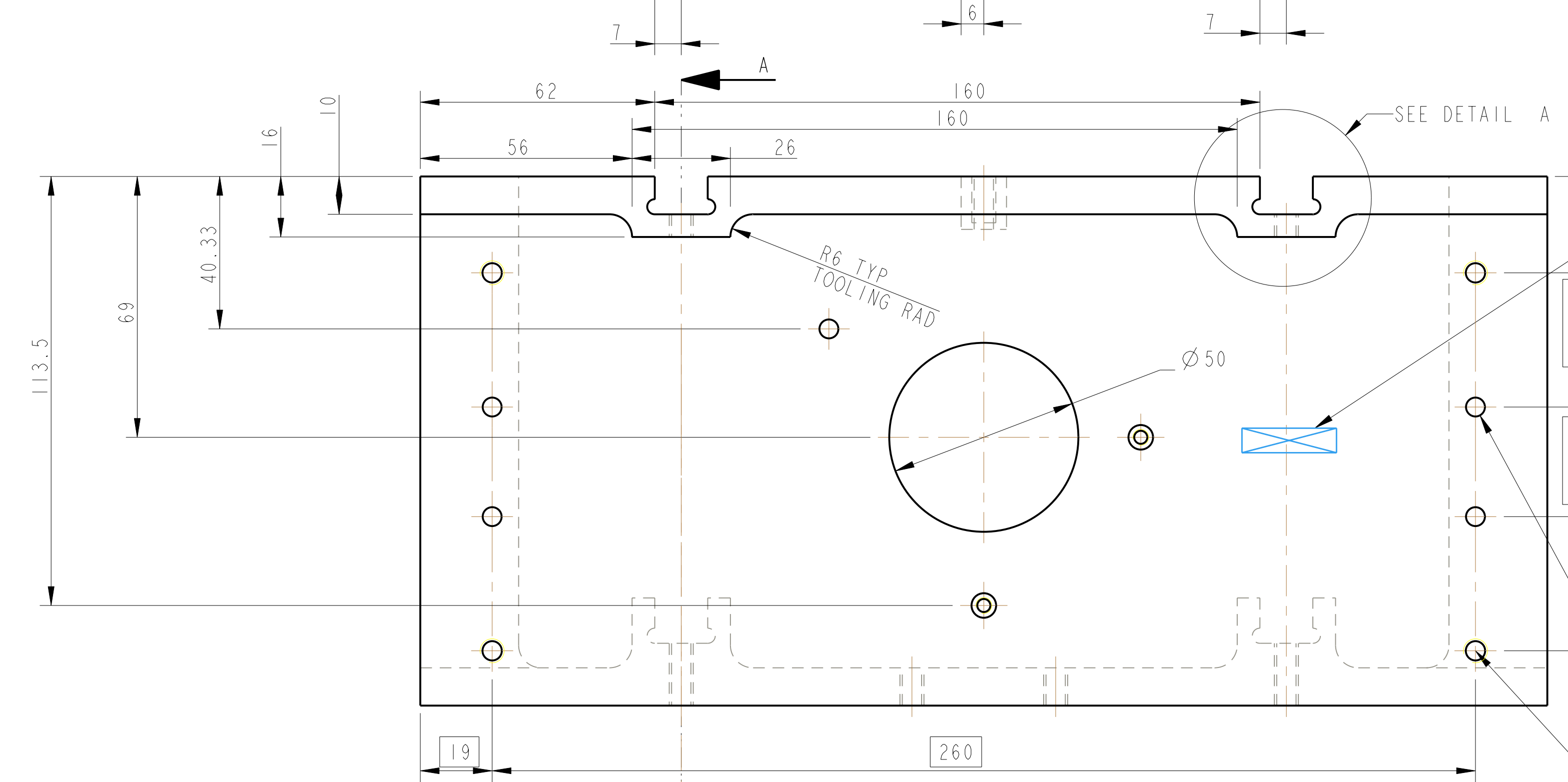
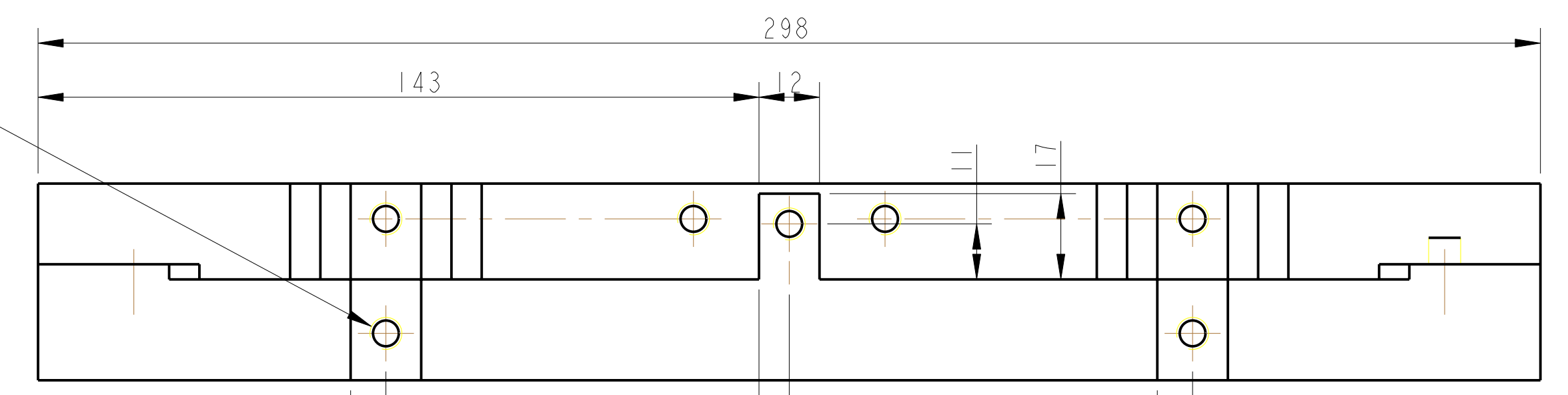
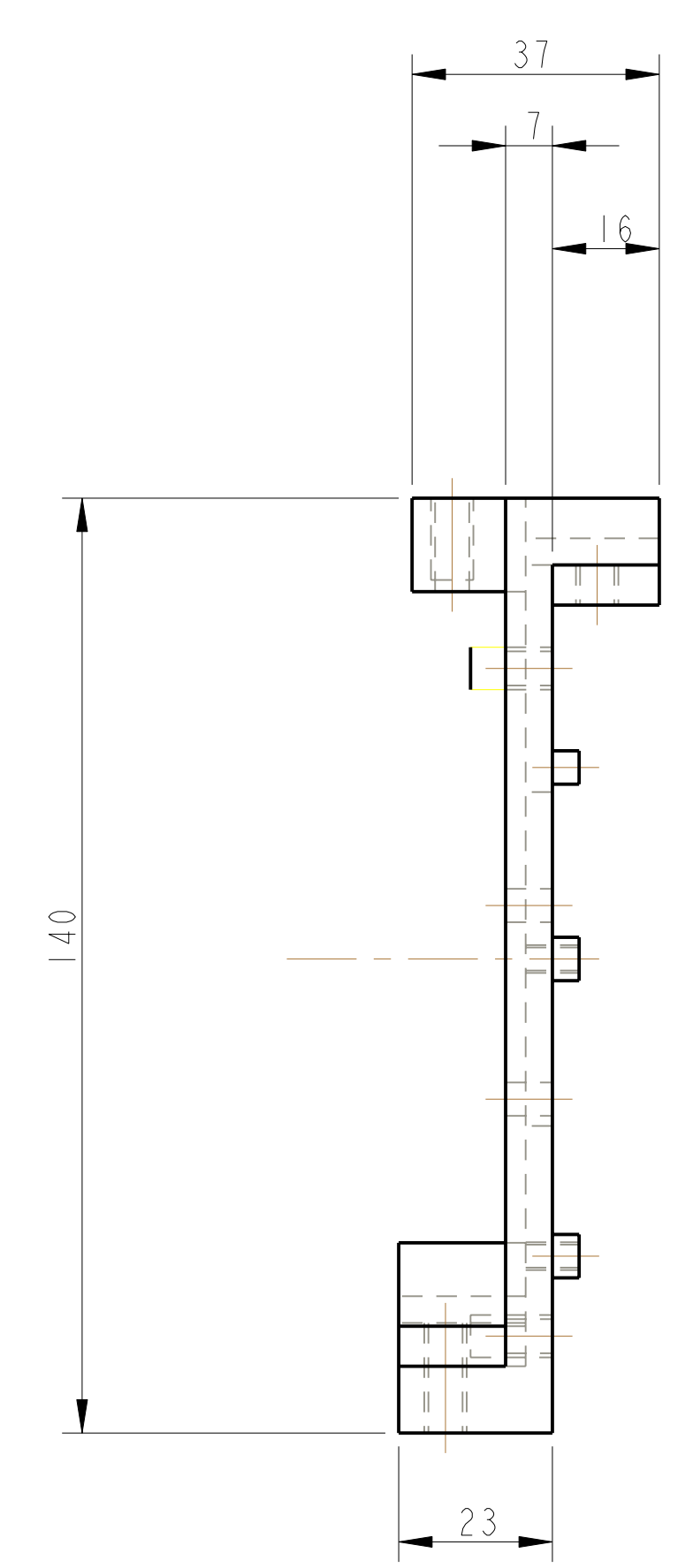


7 HOLES DR. AND TAP THRO' FOR 1/4-20 UNC HELICOILS HELICOILS NOT TO BE FITTED



DETAIL A
SCALE 2:1
2 PLACES

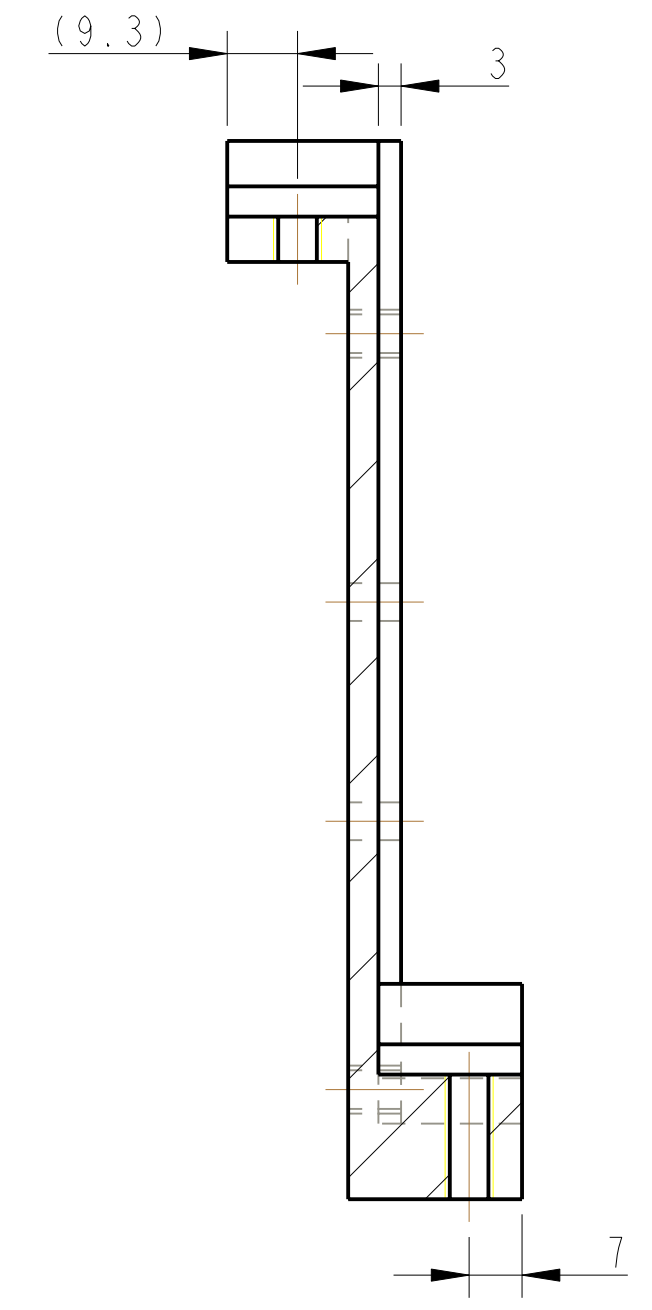
PART NO. (SEE NOTE 4) TO BE ETCHED OR STAMPED IN APPROX. POSITION SHOWN

4 HOLES $\varnothing 5^{+0.012}$ (H7) THRO' $\varnothing 0.1$

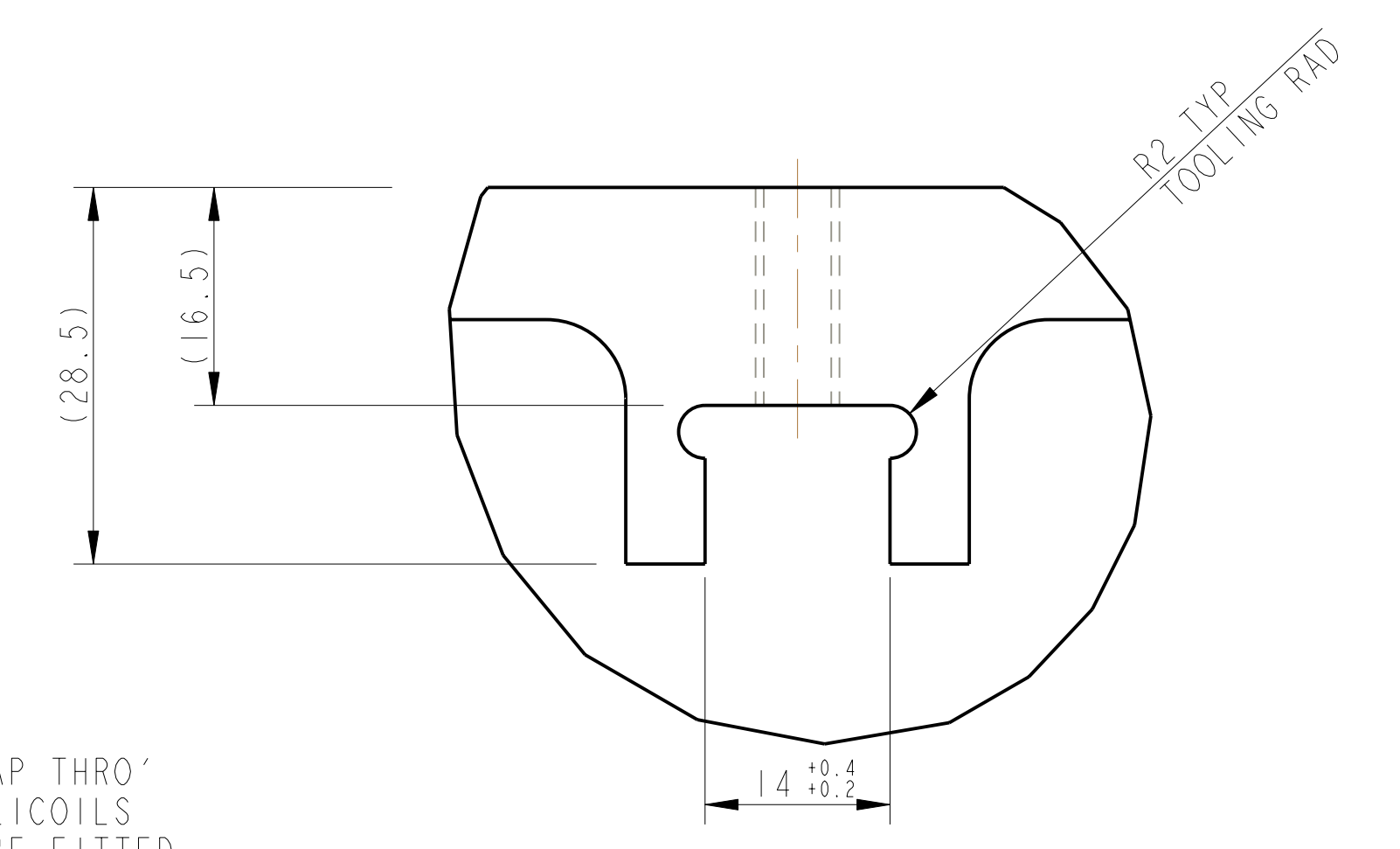
4 HOLES DR. AND TAP 1/4-20 UNC THRO' 0.005" OVERSIZE $\varnothing 0.2$

SEE DETAIL B

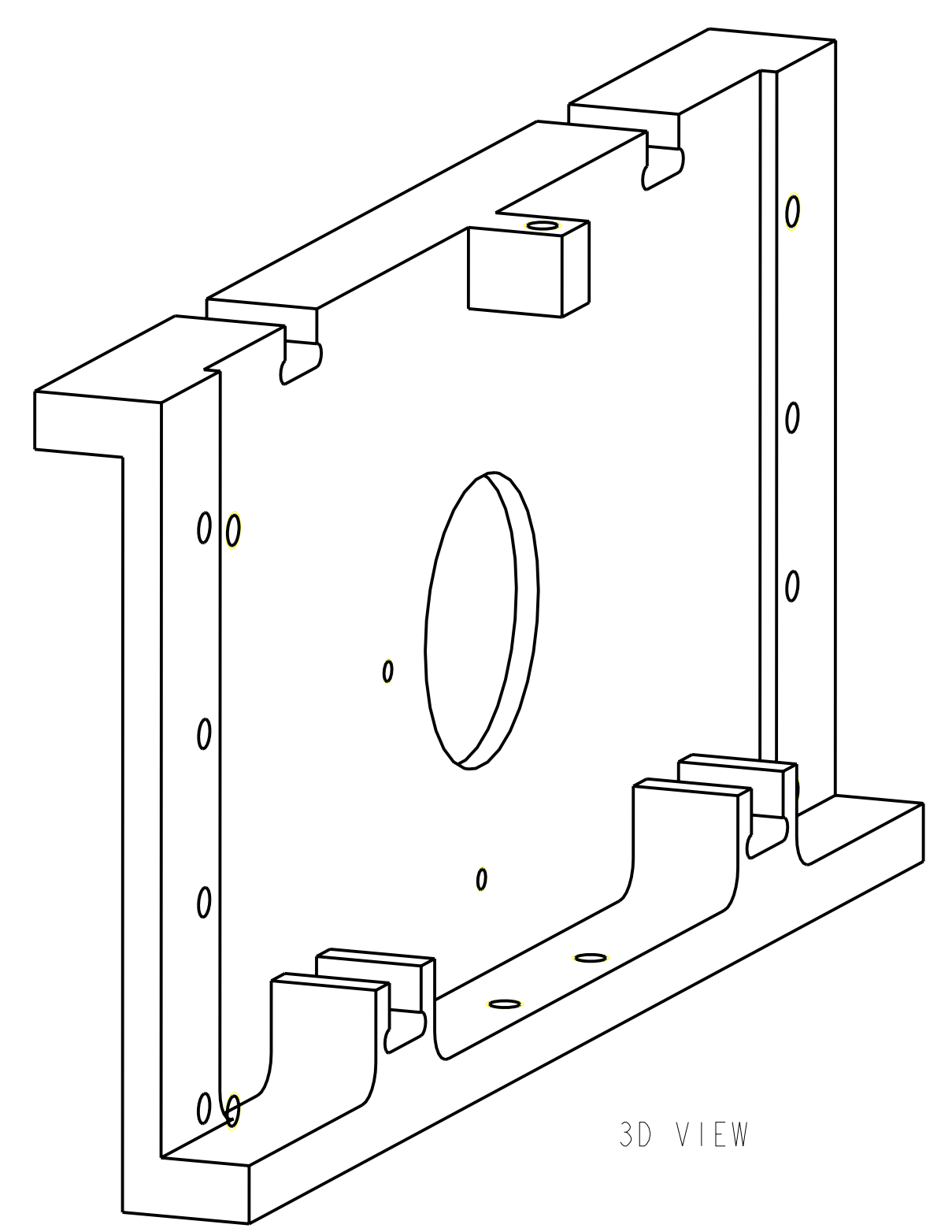
2 HOLES DR. AND TAP THRO' FOR 1/4-20 UNC HELICOILS HELICOILS NOT TO BE FITTED



SECTION A-A



DETAIL B
SCALE 2:1
2 PLACES



NOTES: (UNLESS OTHERWISE SPECIFIED)		CALIFORNIA INSTITUTE OF TECHNOLOGY	
1. REMOVE ALL SHARP EDGES. R0.2 MIN.	2. DO NOT SCALE FROM DRAWING.	MASSACHUSETTS INSTITUTE OF TECHNOLOGY	
3. ALL MACHINING FLUIDS SHALL BE WATER SOLUBLE AND FREE OF SULFUR, CHLORINE AND SILICONE. SUCH AS CINCINNATI MILACRON'S CIMTECH 410 (STAINLESS STEEL).	4. SCRIBE, ENGRAVE OR STAMP PART NUMBER ON NOTED SURFACE OF PART AND A THREE DIGIT SERIAL NUMBER. SERIAL NUMBERS START AT 001 FOR THE FIRST PART AND PROCEED CONSECUTIVELY. USE 07* HIGH CHARACTERS. EXAMPLE: 000108-001-A VIBRATOR TOOL MAY BE USED.	DIMENSIONS ARE IN mm (INCHES) TOLERANCES:	SYSTEM: ADVANCED LIGO
		$\pm .XX \pm 0.2$ mm	SUB-SYSTEM: SUS
		ANGULAR ± 0.25	NEXT ASSY: BS TRIPPLE
		MATERIAL: AL ALLOY 5083 OR SIMILAR	PART NAME: TABLECLOTH SIDE PLATE
		FINISH: CLEAN, GREASE FREE $\sqrt{\mu m}$ (100) Ra = 1.6	BEAMSPLITTER TOP TABLECLOTH
		DATE: 22/12/07	DRG. NO.: 000108
		DRAWN: J'00	APPROVED: J'00
		CHECKED: J'00	DEC/07
		APPROVED: J'00	DEC/07